

BOMBARDIER

SERVICE BULLETIN REVISION TRANSMITTAL SHEET

MODEL BD-100-1A10 (CH-350)

Discard the Revision 07 of this Service Bulletin dated Jan 30/2023, and the Information Sheet dated Mar 06/2023 and replace in its entirety with this Revision 08.

Service Bulletin No.	<u>350-23-004</u>		
Date of Basic Issue	<u>Apr 11/2014</u>		
Revision No.	<u>01</u>	Dated	<u>Jun 18/2014</u>
Revision No.	<u>02</u>	Dated	<u>Nov 26/2015</u>
Revision No.	<u>03</u>	Dated	<u>Apr 19/2016</u>
Revision No.	<u>04</u>	Dated	<u>Oct 07/2016</u>
Revision No.	<u>05</u>	Dated	<u>Nov 08/2016</u>
Revision No.	<u>06</u>	Dated	<u>Nov 17/2022</u>
Revision No.	<u>07</u>	Dated	<u>Jan 30/2023</u>
Revision No.	<u>08</u>	Dated	<u>Aug 09/2023</u>

This revision has no effect for aircraft on which the Basic Issue or Revision 01, Revision 02, Revision 03, Revision 04, Revision 05, Revision 06 or Revision 07 of this Service Bulletin was done thus no other action is necessary. Do not sign the log book if you have not done this revision. Keep the previous log book entry. You may make an entry as "Not Applicable" for this revision.

This revision is issued to:

1. Change, in Paragraph 1.K., to revise Modification Summary 100T091460 to Rev. B.
2. Change, in Paragraph 1.K., to add Modification Summary 100T091469 Rev. A.
3. Incorporated Info Sheet dated Mar 06/2023, in Paragraph 1.K., to update the Modification Summary CC100T091398 to Rev. A-2.

350-23-004

Page 1 of 2

CHALLENGER ³⁵⁰

MODEL BD-100-1A10 (CH-350)

4. Change, in Paragraph 2.B., to revise the effectivity in Note 2 of step (1).
5. Change, in Paragraph 3.B., to revise the effectivity in Note 10.
6. Make miscellaneous minor changes, as necessary, with no change of context.

BOMBARDIER

SERVICE BULLETIN SUMMARY

This Service Bulletin is available at:
my.businessaircraft.bombardier.com

MODEL BD-100-1A10 (CH-350)

ATA 23-23

COMMUNICATIONS

MODIFICATION – DATALINK AND SELCAL SYSTEM – INSTALLATION OF DATALINK WITH SELECTIVE CALLING (SELCAL) OPTION (C23-406)

The information below is provided for your reference. For full details, including labor and part coverage, please see corresponding paragraph contained within this bulletin.

OPTIONAL OPERATIONAL ENHANCEMENT	COMPLIANCE TIME Not applicable	
EFFECTIVITY: A/C Serial No. 20501 to 22999		
MANPOWER: 10 man-hours		
CONTINUED AIRWORTHINESS (CAW) FLEET CAMPAIGN	YES <input type="checkbox"/>	NO <input checked="" type="checkbox"/>
TLMC, CH 5 AFFECTED	YES <input type="checkbox"/>	NO <input checked="" type="checkbox"/>
KITS and/or PARTS	YES <input checked="" type="checkbox"/>	NO <input type="checkbox"/>
TOOLING/GSE	YES <input checked="" type="checkbox"/>	NO <input type="checkbox"/>
PLANNING INFORMATION: See important information at the start of Paragraph 1.	YES <input checked="" type="checkbox"/>	NO <input type="checkbox"/>
DEDICATED SCHEDULE	YES <input type="checkbox"/>	NO <input checked="" type="checkbox"/>
PREREQUISITE SERVICE BULLETINS: SB 350-23-002 and/or 350-23-003 are prerequisites and must be done before or at the same time as this Service Bulletin. See Para 2.B.1. and Para 3.B. for details.		

To place an order for parts or kits, please call Bombardier Aviation Parts Services at:
514-855-2999 or 1-866-538-1247

SERVICE BULLETIN

This Service Bulletin is available at:
my.businessaircraft.bombardier.com

MODEL BD-100-1A10 (CH-350)

ATA 23-23

COMMUNICATIONS

MODIFICATION – DATALINK AND SELCAL SYSTEM – INSTALLATION OF DATALINK WITH SELECTIVE CALLING (SELCAL) OPTION (C23-406)
--

1. PLANNING INFORMATION

- NOTES:**
1. Before you do this Service Bulletin, examine all STC, STA or equivalent action changes to make sure that this Service Bulletin can be completed.
 2. Due to the lead-time required for obtaining kits and parts, operators are advised to order the kit and parts in advance before scheduling the incorporation of this Service Bulletin. Please contact Bombardier Aviation Parts Services, in Montreal, for delivery lead times and confirmation of prices.
 3. The Service Bulletin that follows is a prerequisite and must be done in conjunction with this Service Bulletin:

SERVICE BULLETIN	TITLE	EFFECTIVITY
350-23-002	Modification – SELCAL System Option – Installation of Selective Calling (SELCAL) Option (C23-401)	20501 – 20999

The Service Bulletin that follows is a prerequisite and must be done before or at the same time as this Service Bulletin.

Refer to applicable governmental agency regulations and requirements and make sure that the work described in this Service Bulletin is performed in compliance with manufacturer's recommendations and/or acceptable industry standards.

This document is proprietary to Bombardier Inc. and/or its affiliates and may not be reproduced or copied in any form or by any means without the prior written consent of Bombardier Inc. and/or its affiliates.

© 2014-2023 Bombardier Inc. All rights reserved
Learjet, Challenger, Global, are registered trademarks of Bombardier Inc. or its subsidiaries.

CHALLENGER 350

MODEL BD-100-1A10 (CH-350)

SERVICE BULLETIN	TITLE	EFFECTIVITY
350-23-003	Modification – VHF Communication System – Installation of the 3rd VHF Communication Option (C23-404)	20501 – 20999

A. Effectivity

I BD-100-1A10 aircraft, Serial No. **20501** to **22999**.

NOTE: The instructions given in this Service Bulletin are only applicable to the systems and parts installed at the time of delivery of the aircraft or as changed by Bombardier Aviation Service Bulletin(s).

B. Reason

This Service Bulletin describes the installation of the datalink system with Selective Calling (SELCAL) option for which all aircraft had provisions installed in production. Electrical wiring and some hardware were installed in production to minimize aircraft down time and reduce in-service maintenance cost.

The datalink system is an optional upgrade that provides advanced data communication capabilities. It allows access to enhanced information such as weather data, which increases flight crew situational awareness. The SELCAL option is an automated alert function that notifies flight crews when an incoming transmission occurs. This eliminates the necessity for continuously monitoring the applicable Very High Frequency (VHF) and High Frequency (HF) communication frequencies.

NOTE: Operators must be aware that in order to use the datalink, including the weather reporting capability, a subscription/contract and valid account with an information provider, for example "Universal Weather and Aviation Inc.", must be in place prior to performing this Service Bulletin.

C. Description

This Service Bulletin gives instructions to:

- Get access to the left and right equipment-rack,
- Replace the Radio Interface Unit (RIU) No. 1,
- Replace the VHF communication unit No. 3,
- Install the datalink External Compensation Unit (ECU) (A199),
- Do a change to the configuration setting of the Configuration Strapping Units (CSU),
- As applicable, replace the Option Control Module (OCM), and
- Do the necessary tests to make sure the datalink system operates correctly.

CHALLENGER³⁵⁰
MODEL BD-100-1A10 (CH-350)

D. Compliance

Optional – Operational Enhancement

NOTE: If it is not possible to complete all the instructions in this Service Bulletin because of the aircraft configuration, submit an SRPSA for analysis and to get an approved disposition to complete this Service Bulletin. Standard SRPSA fees may apply. Refer to the Services section of the Bombardier Customer Portal for the latest prices, rates and fees.

E. Approval

The technical content of this Service Bulletin has been approved under the authority of Transport Canada Civil Aviation (TCCA) Design Approval Organization (DAO) No. DAO #93-Q-02.

- NOTES:
1. The technical content of this Service Bulletin is accepted by the FAA under the Canada/USA bilateral Aviation Safety Agreement.
 2. The technical content of this Service Bulletin is accepted by EASA under the Canada/EU bilateral Aviation Safety Agreement.

F. Manpower

NOTE: The man-hours given are to help you schedule the tasks given in this Service Bulletin. The man-hours are for direct labor performed by an experienced crew and do not include the time for familiarization, planning, aircraft preparation in hangar such as towing and positioning of scaffolds, removal of interior furnishings, repainting, supervision and inspection.

For more information related to the manpower, refer to SB 350-00-002.

10 man-hours are necessary to do this modification.

Bombardier Aviation does not pay for the labor to do this modification.

G. Material – Cost and Availability

Kit 100K23-06A is necessary to do this modification.

KIT NO.	PRICE
100K23-06A	Please contact Bombardier Aviation Parts Services, in Montreal, for delivery lead times and confirmation of prices.

CHALLENGER 350

MODEL BD-100-1A10 (CH-350)

In addition to the kit identified above, the parts given in Paragraph 3.B. are also necessary to do this Service Bulletin.

NOTE: Due to the lead-time required for obtaining kit and parts, operators are advised to order the kit and parts in advance before scheduling the incorporation of this Service Bulletin. Please contact Bombardier Aviation Parts Services, in Montreal, for delivery lead times and confirmation of prices.

Bombardier Aviation does not pay for the kit and the parts to do this modification.

For all parts transactions, Bombardier Aviation's current Spare Parts and Component Repair Price Catalogue General Terms and Conditions apply. These terms and conditions are found on the Bombardier Customer Portal at:

my.businessaircraft.bombardier.com

H. Tooling

The equipment and tools listed below are necessary to do this modification:

GSE REFERENCE NO.	PART NO.	DESCRIPTION
20X-00-04	M1-G-Kit	Bonding Tester, Portable
24-00-24	S4933959-501	Tag, Circuit Breaker

NOTES:

1. Refer to the BD-100 Illustrated Tool and Equipment Manual (ITEM) to make sure that you use the correct equipment configuration.
2. Refer to the Liability Statement in the ITEM for the BD-100 for acceptable GSE equivalents.
3. This list is provided for a quick reference. In case of discrepancy between this list and the tool called out in the SPM-WM, Chapter 20, then the tool called in the SPM-WM will prevail. Other approved alternative tools are acceptable and can also be used.

I. Weight and Balance

WEIGHT	MOMENT
1.0 lb (0.45 kg)	334.0 lbf in (3.85 kgm)

J. Electrical Load Data

No change.

K. References

- Bombardier Aviation, Modification Summary, 100T090153, Rev. C-2.
- Bombardier Aviation, Modification Summary, 100T091247, Rev. A.

CHALLENGER 350

MODEL BD-100-1A10 (CH-350)

- Bombardier Aviation, Modification Summary, 100T091200, Rev. B.
- Bombardier Aviation, Modification Summary, 100T091398, Rev. B.
- Bombardier Aviation, Modification Summary, 100T091460, Rev. B.
- Bombardier Aviation, Modification Summary, 100T091469, Rev. A.
- Bombardier Aviation, Modification Summary, CC100T091256, Rev. A-1.
- Bombardier Aviation, Modification Summary, CC100T091398, Rev. A-2.
- Bombardier Aviation, Kit Drawing K1005330035, Rev. L.
- CH 350 Aircraft Maintenance Manual (AMM), Chapters 6, 23, 24, 25 and 31.
- Bombardier Aviation, Standard Practices Manual (SPM), Chapters 20 and 51.
- Bombardier Aviation, SB 350-00-002, Service Bulletin Description and Policy.
- Bombardier Aviation, SB 350-22-002 "Modification – Auto Throttle System – Installation and Activation of the Auto Throttle System (ATS) on Provisioned Proline 21 Advanced Aircraft".
- Bombardier Aviation, SB 350-23-002 "Modification – SELCAL System Option – Installation of Selective Calling (SELCAL) Option (C23- 401)".
- Bombardier Aviation, SB 350-23-003 "Modification – VHF Communication System – Installation of the 3rd VHF Communication Option (C23- 404)".
- Bombardier Aviation, SB 350-34-003 "Modification – Flight Management System – Installation of the 3D Navigational Map Option (C34-407)".
- Bombardier Aviation, SB 350-34-009 "Modification – Flight Management System – Activation of Required Navigation Performance Authorization Required (RNP AR) 0.3 Option (C34-501)".
- Bombardier Aviation, SB 350-46-003, "Modification – Flight Deck Information Systems – Installation of Universal Weather on MFD (Option C46-420)".

L. Other Publications Affected

- CH 350 Aircraft Illustrated Parts Catalog (AIPC), Chapter 23.

M. Equivalent Service Bulletin

- For the Challenger 300 aircraft, use SB 100-23-06.

2. ACCOMPLISHMENT INSTRUCTIONS

- NOTES:**
1. All TASKs given in the procedures that follow are from the BD-100, Aircraft Maintenance Manual (AMM) unless otherwise specified.
 2. All references made to zones, access panels and/or doors, are from the BD-100 Aircraft Maintenance Manual (AMM), Chapter 6.

A. Aircraft Setup

- (1) Obey all electrical/electronic safety precautions. Refer to AMM 24-00-00-910-801.

CHALLENGER 350

MODEL BD-100-1A10 (CH-350)

- (2) Obey all electrostatic-discharge safety precautions. Refer to AMM 24-00-00-910-802.
- (3) Open and tag the circuit breakers that follow:

LOCATION	CB NO.	NAME	ZONE
LCBP	B4	RIU 1B/ AURAL	211
LCBP	B5	RIU 1A	211
LCBP	B6	L IAPS	211
LSPC	E1	IAPS FAN	221
LSPC	E2	COM 3	221
RCBP	B6	R IAPS	212

- (4) Remove the left and right equipment-rack access panels listed below. Refer to AMM 25-72-01-000-803.

ACCESS PANEL	DESIGNATION
221DZ	Left Upper Access Panel
221EZ	Left Lower Access Panel
222EZ	Right Lower Access Panel

B. Modification

NOTE: If it is not possible to complete all the instructions of this Service Bulletin because of the configuration of the aircraft, submit an SRPSA for analysis and to get an approved disposition to complete this Service Bulletin. Standard SRPSA fees may apply. Refer to the Services section of the Bombardier Customer Portal for the latest prices, rates and fees.

- (1) Set the tray polarizing keys and replace the Radio Interface Unit (RIU) No. 1 (A17). Refer to Figure 2 and to the table that follows:

CHALLENGER³⁵⁰
MODEL BD-100-1A10 (CH-350)

UNIT NAME	REMOVAL AMM 23-51-21-000-801	INSTALLATION AMM 23-51-21-400-801
RIU No. 1 (A17)	Old Part No. 822-1590-152	New Part No. 822-1469-652 or New Part No. 822-1469-653

NOTES: 1. For aircraft S/N: 20501 to 20936 or PRE SB350-22-002 (S/N: 20875 to 20936) and POST 350-23-002 and POST 350-23-003 install RIU P/N: 822-1469-652.

2. For aircraft S/N: 20937 to 22999 or POST SB350-22-002 (S/N: 20875 to 20936) and POST 350-23-003 install RIU P/N: 822-1469-653.

- (2) Replace the VHF communication unit No. 3 (A10). Refer to the table that follows:

UNIT NAME	REMOVAL AMM 23-11-01-000-801	INSTALLATION AMM 23-11-01-400-801
VHF No. 3 (A10)	Old Part No. 822-1468-110	New Part No. 822-1468-390

NOTE: The VHF No. 3 unit is located on the top shelf in the left equipment rack.

- (3) Do the electrical bonding test of the RIU No. 1 (A17) and VHF No. 3 (A10). Refer to SPM-MM 51-80-00-760-801.

NOTE: The maximum allowable resistance is 5 milliohms between each unit mounting surface and the aircraft primary structure.

- (4) Install the datalink ECU, Part No. 822-1200-996. Refer to Figure 1 and to the steps that follow.

(a) Torque the screws from 10 to 13 lbf in (1.13 to 1.46 Nm). Refer to SPM-MM 20-21-00-910-801.

(b) Do the electrical bonding test of the datalink ECU. Refer to SPM-MM 51-80-00-760-801.

NOTE: The maximum allowable resistance is 5 milliohms between the mounting surface of the datalink ECU and the aircraft primary structure.

(c) Install the electrical identification decal, Part No. K1005330035-007/01. Refer to SPM-MM 20-80-01-400-801.

CHALLENGER ³⁵⁰

MODEL BD-100-1A10 (CH-350)

- (5) Do the change to the configuration setting of the CSUs as follow:
- (a) Remove the CSU No. 1 and No. 2. Refer to AMM 31-45-17-000-801.
 - (b) Do the configuration setting of the CSUs as given in the table that follows. Refer to AMM 31-45-17-280-801:

WORD	BIT	POSITION
13	13	DOWN
15	8	DOWN

- (c) As applicable, replace the OCM in the CSU No. 1 and No. 2. Refer to the note and to the table that follows:

NOTE: If Service Bulletin 350-46-003 (Universal Weather on MFD Option C46-420) is installed at the same time as this Service Bulletin, do not replace the OCMs that SB 350-46-003 installs. Go to the next step.

FOR AIRCRAFT PRE SB 350-34-009 OPTION (RNP AR 0.3)			
UNIT NAME	REMOVAL AMM 31-45-21-000-801	INSTALLATION AMM 31-45-21-400-801	
		AIRCRAFT PRE SB 350-34-003 OPTION (3D MAP C34-407)	AIRCRAFT POST SB 350-34-003 OPTION (3D MAP C34-407)
OCM	Old Part No. 822-1484-228 or 822-1484-229	New Part No. 822-1484-237	New Part No. 822-1484-238

FOR AIRCRAFT POST SB 350-34-009 OPTION (RNP AR 0.3)			
UNIT NAME	REMOVAL AMM 31-45-21-000-801	INSTALLATION AMM 31-45-21-400-801	
		AIRCRAFT PRE SB 350-34-003 OPTION (3D MAP C34-407)	AIRCRAFT POST SB 350-34-003 OPTION (3D MAP C34-407)
OCM	Old Part No. 822-1484-402 or 822-1484-403	New Part No. 822-1484-411	New Part No. 822-1484-412

CHALLENGER³⁵⁰
MODEL BD-100-1A10 (CH-350)

(d) Install the CSU No. 1 and No. 2. Refer to AMM 31-45-17-400-801.

C. Testing

(1) Remove the tags and close the circuit breakers that follow:

LOCATION	CB NO.	NAME	ZONE
LCBP	B4	RIU 1B/ AURAL	211
LCBP	B5	RIU 1A	211
LCBP	B6	L IAPS	211
LSPC	E1	IAPS FAN	221
LSPC	E2	COM 3	221
RCBP	B6	R IAPS	212

(2) Do the operational test of the CSU. Refer to AMM 31-45-17-710-801.

(3) Do the operational test of the VHF communication system No. 3. Refer to AMM 23-11-00-710-801.

(4) Do the operational test of the RIU. Refer to AMM 23-51-21-710-801.

(5) Do the operational test of the datalink ECU. Refer to AMM 23-23-01-710-801.

CAUTION: DO NOT REMOVE OR INSTALL THE STORAGE DEVICE WHEN THE "LED" FLASHES YELLOW. IF YOU DO THIS, YOU CAN CAUSE DAMAGE TO THE FILES ON THE STORAGE DEVICE OR START THE "DBU" INITIALIZATION PROCEDURE.

(6) Load the datalink software Encrypted Application Keys (EAK) GWXK-6200, Part No. 810-0369-100 and FPLK-6200, Part No. 810-0368-100 as follows:

NOTE: An EAK is an alphanumeric string that must be entered in the datalink External Compensation Unit (ECU) to unlock – option related – application software already resident in the system. EAK are unique and can only be used in the aircraft for which they were purchased (they will not work on other aircraft). For flexibility, EAK are stored in the datalink ECU. This way, the RIU can be removed from the aircraft without losing option information.

When an operator purchases an option, he is provided with the EAKs for that option. EAKs are created externally from a PC based computer system that is part of the Collins Aerospace Order Administration/Factory.

CHALLENGER 350
MODEL BD-100-1A10 (CH-350)

NO.	STEP	EXPECTED RESULT
1	On the CDU, press the IDX key.	INDEX menu page 1/2 is displayed.
2	Press the line-select key (LSK) next to DATALINK.	DATALINK MENU is displayed.
3	Press the LSK next to TECHNICAL.	DL APPLICATION MENU is displayed.
4	Press the LSK next to PASSWORD.	PASSWORD page is shown.
5	Enter password with the keyboard. NOTE: The password is the time of the day shown on the PASSWORD page.	PROTECTED MENU page is displayed.
6	Press the LSK next to APM MENU.	APM MENU page is shown.
7	Press the LSK next to LICENCE MAINT.	DL LICENSE MGR page is shown.
8	Enter the FPLK-6200 key provided then press the LSK next to VALIDATE.	The MSG line shows KEY ADDED and TYPE line shows ENABLE ARINC 702A AOC MESSAGES.
9	Enter the GWXK-6200 key provided then press the LSK next to WRITE.	The MSG line shows KEY ADDED and TYPE line shows Universal WEATHER ACCESS.

CAUTION: DO NOT REMOVE OR INSTALL THE STORAGE DEVICE WHEN THE “LED” FLASHES YELLOW. IF YOU DO THIS, YOU CAN CAUSE DAMAGE TO THE FILES ON THE STORAGE DEVICE OR START THE “DBU” INITIALIZATION PROCEDURE.

(7) Turn off and restart the entire avionics equipment suite as follows:

NOTE: To ensure proper recognition of the newly installed software data (and avoid displaying incorrect data) by all of the avionics systems, the entire avionics equipment suite must be turned off and restarted after the completion of any load on-board the aircraft.

(a) Turn off the entire avionics equipment suite as follows:

- STBY INST -----> OFF
- L and R BATT -----> OFF

CHALLENGER 350

MODEL BD-100-1A10 (CH-350)

- EXT POWER (if connected) ---> AVAILABLE
- (b) Wait 30 seconds.
- (c) Restart the entire avionics equipment suite as follows:
 - EXT POWER (if connected) ---> ON
 - L and R BATT -----> ON
 - STBY INST -----> ON
- (8) Do the functional test of the datalink system. Refer to AMM 23-23-00-720-801.

D. Close-out

- (1) Install the left and right equipment-rack access panels listed below. Refer to AMM 25-72-01-400-803.

ACCESS PANEL	DESIGNATION
221DZ	Left Upper Access Panel
221EZ	Left Lower Access Panel
222EZ	Right Lower Access Panel

- (2) Remove all tools, equipment and unwanted materials from the aircraft.

E. Recording

When this Service Bulletin is completed, make an entry in the aircraft log and send the attached Incorporation Notice to Bombardier Business Aircraft Customer Services (BBACS).

For information, correction(s), comment(s) and/or feedback regarding Service Bulletins released on the Customer Portal, please contact the Service Bulletin Group at the following email address:

bbad_SBgroup@aero.bombardier.com

3. MATERIAL INFORMATION

A. Kit

Kit 100K23-06A is necessary to do this Service Bulletin and contains the parts that follow:

CHALLENGER ³⁵⁰
 MODEL BD-100-1A10 (CH-350)

NEW PART NO.	QTY	ITEM	USED PART NO.	INSTRUCTIONS - DISPOSITION
K1005330035-007/01	1	Electrical Ident	-	-
MS35206-215	2	Screw	-	-
NAS1149DN416J	2	Washer	-	-

- NOTES:**
1. In case of discrepancy between this list and the "Service Bulletin Kit Parts List" contained in the respective kit, then the later list prevails.
 2. The actual quantity for some of the hardware contained in the kit can be greater than the amount shown in the table as these items are supplied in prepackaged quantities.

B. Parts

The parts that follow are necessary to do this Service Bulletin and are available from Bombardier Aviation Parts Services, Montreal:

ITEM	PART NUMBER	QUANTITY
ECU-3000	822-1200-996	1
FPLK-6200 EAK	810-0368-100	1
GWXK-6200 EAK	810-0369-100	1
Option Control Module (OCM) (See Notes 3, 4 & 6)	822-1484-237	2
Option Control Module (OCM) (See Notes 3, 5 & 6)	822-1484-238	2
Option Control Module (OCM) (See Notes 3, 4 & 7)	822-1484-411	2
Option Control Module (OCM) (See Notes 3, 5 & 7)	822-1484-412	2
RIU-4000	822-1469-652 (See Notes 2 & 9) or 822-1469-653 (See Note 10)	1

CHALLENGER ³⁵⁰
MODEL BD-100-1A10 (CH-350)

ITEM	PART NUMBER	QUANTITY
VHF-4000 (See Note 1)	822-1468-390	1

- NOTES:**
1. If SB 350-23-003 is installed at the same time as this SB, do not order the VHF Communication Unit No. 3 (A10) listed in SB 350-23-003, order this VHF Communication Unit No. 3 instead.
 2. If SB 350-23-002 is installed at the same time as this SB 350-23-004, do not order the RIU No. 1 (A17) listed in SB 350-23-002, order this RIU No. 1 instead.
 3. If SB 350-46-003 is installed at the same time as this SB 350-23-004, do not order one or the other OCMs listed above. Order the applicable part listed in SB 350-46-003.
 4. For aircraft PRE SB 350-34-003, order this part.
 5. For aircraft POST SB 350-34-003: If SB 350-34-003 is done before this SB 350-23-004, order this part. If SB 350-34-003 is done at the same time as this SB 350-23-004, order this part only once.
 6. For aircraft PRE SB 350-34-009, order this part.
 7. For aircraft POST SB 350-34-009: If SB 350-34-009 is done before this SB 350-23-004, order this part. If SB 350-34-009 is done at the same time as this SB 350-23-004, order this part only once.
 8. The part numbers for the items listed in the previous table are subject to change without revision to this Service Bulletin. In case of discrepancy between this list and any other list, the Illustrated Parts Catalog prevails and shall be used to determine the latest part number.
 9. For aircraft S/N: 20501 to 20936 or PRE SB350-22-002 (S/N: 20875 to 20936) and POST 350-23-002 and POST 350-23-003 install RIU P/N: 822-1469-652.
 10. For aircraft S/N: 20937 to 22999 or POST SB350-22-002 (S/N: 20875 to 20936) and POST 350-23-003 install RIU P/N: 822-1469-653.

C. Material

No materials required.

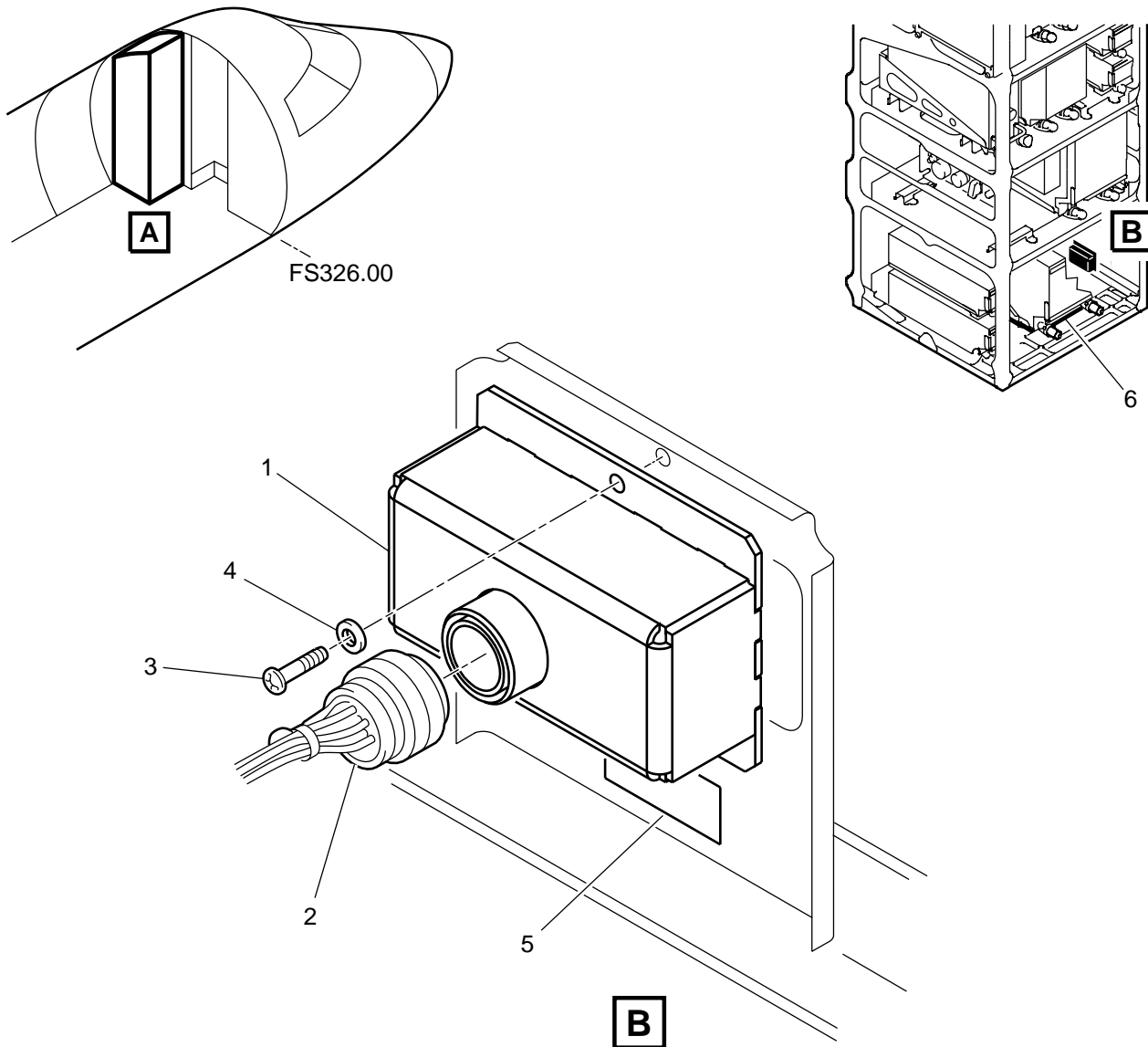
D. Publications

No publications required.

CHALLENGER ³⁵⁰

MODEL BD-100-1A10 (CH-350)

STEP 1 INSTALL, At WL79.56, forward of the Remote Data Concentrator (6)	PART NO.	QTY		
Datalink ECU (1)	822-1200-996	1		
Screw (3)	MS35206-215	2		
Washer (4)	NAS1149DN416J	2		
Connector (2)	A199P1	Electrical Ident Decal (5)	K1005330035-007/01	1
Electrical Ident Decal (5)	K1005330035-007/01	1		



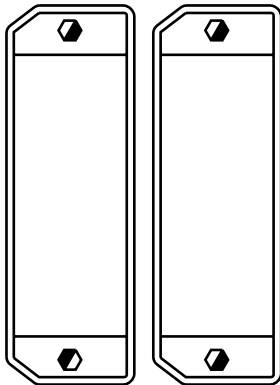
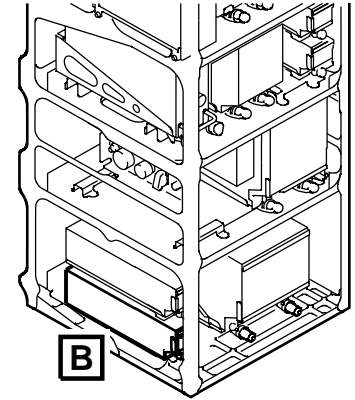
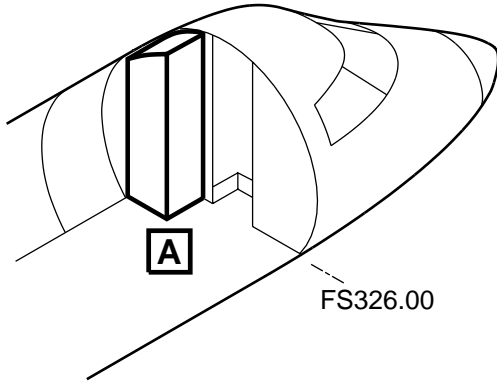
CSB2304_001

Datalink External Compensation-Unit – Installation
Figure 1

CHALLENGER³⁵⁰

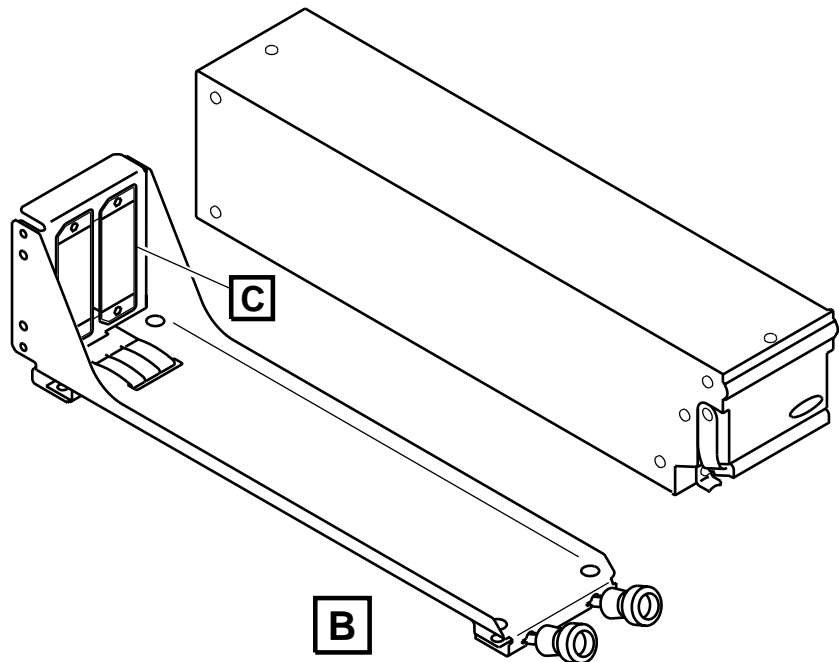
MODEL BD-100-1A10 (CH-350)

<p>STEP 1 01</p> <p>Set the polarizing keys on the RIU No. 1 mounting tray connectors.</p>	<p>NOTE: 01</p> <p>The darkened areas indicate the blocked portions of the polarizing keys.</p> <p>(the lightened areas indicate the extended portion of the polarizing keys, the portion which inserts into the openings of the mating connectors)</p>
---	--



01 C

Drawings and data contained herein are the exclusive property of Bombardier Inc. and their copy or reproduction by any third party is strictly forbidden.



CSB2304_002

RIU – Indexing Key Modification
Figure 2

BOMBARDIER

SERVICE BULLETIN EVALUATION FORM

(Your ideas will help us provide better bulletins)

SERVICE BULLETIN: 350-23-004 **ISSUE:** Rev. 08 **DATED:** Aug 09/2023

TITLE: MODIFICATION – DATALINK AND SELCAL SYSTEM – INSTALLATION
 OF DATALINK WITH SELECTIVE CALLING (SELCAL) OPTION (C23-406)

For any information, correction(s), comment(s) and/or feedback regarding Service Bulletins released on the Customer Portal, please contact the Service Bulletin Group at the following email address:

bbad_SBgroup@aero.bombardier.com

NOTE: Please use Salesforce **only** for troubleshooting issues or when Engineering deviation is necessary to accomplish the Service Bulletin modification.

BOMBARDIER

SERVICE BULLETIN INCORPORATION SHEET – "350–23–004"

BOMBARDIER SUBMISSION	<p>Upon completion of the Service Bulletin, please fill-in, fax to (514) 855–8798 or e-mail to Fracas at fracas.montreal@aero.bombardier.com</p> <p>If you're reporting Service Bulletin (SB) Incorporations to CAMP, sending this Incorporation Sheet to Bombardier is not mandatory. If your aircraft is on another tracking system, please contact Bombardier to make arrangements for automated data submission.</p>
----------------------------------	--

Service Bulletin Number	Rev.	* Parts Completed	COMPLIED WITH			Remarks/Reason (Mandatory if N/A)
			YES	NO	N/A	
350–23–004	08	_____	<input type="checkbox"/>	<input type="checkbox"/>	<input type="checkbox"/>	_____
_____	_____	_____	<input type="checkbox"/>	<input type="checkbox"/>	<input type="checkbox"/>	_____
_____	_____	_____	<input type="checkbox"/>	<input type="checkbox"/>	<input type="checkbox"/>	_____
_____	_____	_____	<input type="checkbox"/>	<input type="checkbox"/>	<input type="checkbox"/>	_____
_____	_____	_____	<input type="checkbox"/>	<input type="checkbox"/>	<input type="checkbox"/>	_____

Actual hours to accomplish Service Bulletin: _____

- * **NOTES:**
1. Where the Service Bulletin is divided into a number of parts (e.g., PARTS A, B, C, D, etc.) which can be carried out separately, indicate only those parts completed at this time.
 2. For repetitive checks (usually PART A) only the initial check should be reported unless otherwise stated in the Service Bulletin.
 3. When more than one part is carried out at the same time, each part should be reported.
 4. Fill in 'Remark/Reason' to explain compliance method when N/A is selected. (E.g. Part not installed, N/A by effectivity, N/A by Part Serial Number, etc.)
 5. PCW means 'Previously Complied With'.

Aircraft Serial No. _____	Aircraft Reg. No. _____
Airframe Hours: _____	Airframe Landings _____
S.B. Incorporation Date _____ (dd/mm/yy)	Service Order No. _____
Facility incorporating S.B. _____	
Name _____	Signature _____ Date _____ (dd/mm/yy)
Signature not required if sent by E-Mail	