

SERVICE BULLETIN INFORMATION SHEET

MODEL BD-100-1A10 (CH-350)

ATA 23-71

COMMUNICATIONS

**MODIFICATION – VOICE RECORDER SYSTEM –
INTRODUCTION OF THE RECORDER INDEPENDENT POWER SUPPLY (RIPS) FOR
THE COCKPIT VOICE RECORDER (CVR) OPTION (C23-511)**

Service Bulletin No.: 350-23-009 **Issue:** Rev. 03 **Dated:** Oct 30/2018

The following data is supplied for information only. No revision to the Service Bulletin is necessary.

Keep this Information Sheet with subject Service Bulletin

This Information Sheet is issued to add the effectivity for Service Bulletin SB 350-31-004 in the prerequisite statement, in the Summary Sheet and in Paragraph 1, NOTE 2 of the Service Bulletin.

The statement now reads:

For aircraft, Serial No. 20501 to 20739, SB 350-31-004 is a prerequisite and must be done before or at the same time as this Service Bulletin.

BOMBARDIER

SERVICE BULLETIN REVISION TRANSMITTAL SHEET

MODEL BD-100-1A10 (CH-350)

Discard the Revision 02 of this Service Bulletin dated Jan 18/2018, and replace in its entirety with this Revision 03.

Service Bulletin No.	<u>350-23-009</u>		
Date of Basic Issue	<u>Jun 13/2014</u>		
Revision No.	<u>01</u>	Dated	<u>Jun 25/2014</u>
Revision No.	<u>02</u>	Dated	<u>Jan 18/2018</u>
Revision No.	<u>03</u>	Dated	<u>Oct 30/2018</u>

This revision has no effect for aircraft on which the Basic Issue, Revision 01 or Revision 02 of this Service Bulletin was done thus no other action is necessary. Do not sign the log book if you have not done this revision. Keep the previous log book entry. You may make an entry as "Not Applicable" for this revision.

This revision is issued to:

1. Add in the Summary Sheet, SB 350-31-004 as a prerequisite Service Bulletin.
2. Add in Paragraph 1., a NOTE that SB 350-31-004 is a prerequisite Service Bulletin.
3. Add in Paragraph 1.K., a reference to SB 350-31-004, "Modification - Flight-Data Recording System - Modification of the Power Source of the Cockpit Voice Recorder (CVR) and Flight Data Recorder (FDR)".
4. Make miscellaneous minor changes, as necessary, with no change of context.

350-23-009

Page 1 of 1

BOMBARDIER

SERVICE BULLETIN SUMMARY

This Service Bulletin is available at:
my.businessaircraft.bombardier.com

MODEL BD-100-1A10 (CH-350)

ATA 23-71

COMMUNICATIONS

**MODIFICATION - VOICE RECORDER SYSTEM -
INTRODUCTION OF THE RECORDER INDEPENDENT POWER SUPPLY (RIPS) FOR
THE COCKPIT VOICE RECORDER (CVR) OPTION (C23-511)**

The information below is provided for your reference. For full details, including labor and part coverage, please see corresponding paragraph contained within this bulletin.

OPTIONAL OPERATIONAL ENHANCEMENT	COMPLIANCE TIME Not applicable	
EFFECTIVITY: A/C Serial No. 20501 to 20999		
MANPOWER: 12 man-hours		
CONTINUED AIRWORTHINESS (CAW) FLEET CAMPAIGN	YES <input type="checkbox"/>	NO <input checked="" type="checkbox"/>
TLMC, CH 5 AFFECTED	YES <input type="checkbox"/>	NO <input checked="" type="checkbox"/>
KITS and/or PARTS	YES <input checked="" type="checkbox"/>	NO <input type="checkbox"/>
TOOLING/GSE	YES <input checked="" type="checkbox"/>	NO <input type="checkbox"/>
PLANNING INFORMATION: See important information at the start of Paragraph 1.	YES <input checked="" type="checkbox"/>	NO <input type="checkbox"/>
DEDICATED SCHEDULE	YES <input type="checkbox"/>	NO <input checked="" type="checkbox"/>
PREREQUISITE SERVICE BULLETINS: SB 350-31-004 is a prerequisite and must be done before or at the same time as this Service Bulletin.		

To place an order for parts or kits, please call Bombardier Aerospace Parts Services at:

514-855-2999 or 1-866-538-1247

SERVICE BULLETIN

This Service Bulletin is available at:
my.businessaircraft.bombardier.com

MODEL BD-100-1A10 (CH-350)

ATA 23-71

COMMUNICATIONS

<p>MODIFICATION - VOICE RECORDER SYSTEM - INTRODUCTION OF THE RECORDER INDEPENDENT POWER SUPPLY (RIPS) FOR THE COCKPIT VOICE RECORDER (CVR) OPTION (C23-511)</p>

1. PLANNING INFORMATION

- NOTES:
1. Before you do this Service Bulletin, examine all STC, STA or equivalent action changes to make sure that this Service Bulletin can be completed.
 2. SB 350-31-004 is a prerequisite and must be done before or at the same time as this Service Bulletin.
 3. Due to the lead-time required for obtaining kits and parts, operators are advised to order the kit and part in advance before scheduling the incorporation of this Service Bulletin. Please contact Bombardier Aerospace Parts Services, in Montreal, for delivery lead times and confirmation of prices.
 4. The following aircraft have already met the intent of the Basic Issue of the Service Bulletin in accordance with Kit Drawing K1005357461 Revision B and the SNIEOs that follow:

AIRCRAFT SERIAL NO.	K1005357461 SNIEO NO.
20501	S11
20502	S09
20503 – 20507	S12
20508 – 20520	S13

Refer to applicable governmental agency regulations and requirements and make sure that the work described in this Service Bulletin is performed in compliance with manufacturer's recommendations and/or acceptable industry standards.

This document is proprietary to Bombardier Inc. and/or its affiliates and may not be reproduced or copied in any form or by any means without the prior written consent of Bombardier Inc. and/or its affiliates.

© 2014-2018 Bombardier Inc. All rights reserved
Learjet, Challenger, Global, are registered trademarks of Bombardier Inc. or its subsidiaries.

CHALLENGER ³⁵⁰
MODEL BD-100-1A10 (CH-350)

A. Effectivity

BD-100-1A10 aircraft, Serial No. **20501** to **20999**.

NOTE: The instructions given in this Service Bulletin are only applicable to the systems and parts installed at the time of delivery of the aircraft or as changed by Bombardier Aerospace Service Bulletin(s).

B. Reason

This Service Bulletin introduces as an option the Recorder Independent Power Supply (RIPS). The RIPS is designed to power the Cockpit Voice Recorder (CVR), the microphone pre-amplifier and area microphone for 10 minutes after aircraft power is removed. The RIPS monitors 28 Vdc voltage, charges the battery pack and powers the CVR equipment when the input voltage drops below a pre-determined threshold (19 Vdc).

Incorporation of this Service Bulletin will make the aircraft compliant with the revised FAA regulation FAR 25.1457 for PART 135 operators.

C. Description

This Service Bulletin gives instructions to:

- Open the aft equipment compartment door,
- Remove a floor panel in the aft equipment compartment,
- Remove the CVR and HF 2 transceiver,
- Release connectors and interphone jacks from the aft compartment service panel,
- Remove the CVR tray and supporting structure,
- Install new CVR tray support structure,
- Install the CVR tray,
- Install the RIPS,
- Install the CVR
- Install the components removed for access,
- Do the necessary tests to make sure the system operates correctly, and
- Close the aft equipment compartment door.

D. Compliance

Optional – Operational Enhancement.

NOTE: If it is not possible to complete all the instructions in this Service Bulletin because of the aircraft configuration, submit an SRPSA for analysis and to get an approved disposition to complete this Service Bulletin.

CHALLENGER ³⁵⁰
MODEL BD-100-1A10 (CH-350)

E. Approval

The technical content of this Service Bulletin has been approved under the authority of Transport Canada Civil Aviation (TCCA) Design Approval Organization (DAO) No. DAO #93-Q-02.

- NOTES:
1. The technical content of this Service Bulletin is accepted by the FAA under the Canada/USA bilateral Aviation Safety Agreement.
 2. The technical content of this Service Bulletin is accepted by EASA under the Canada/EU bilateral Aviation Safety Agreement.

F. Manpower

- NOTES:
1. The man-hours given are to help you schedule the tasks given in this Service Bulletin. The man-hours are for direct labor performed by an experienced crew and do not include the time for familiarization, planning, aircraft preparation in hangar such as towing and positioning of scaffolds, removal of interior furnishings, repainting, supervision and inspection.

For more information related to the manpower, refer to SB 350-00-002.

2. This Service Bulletin may require consumable materials that have specific curing times (refer to Paragraph 3). The accumulated curing time is not included in the man-hours and should be considered for planning purposes before you schedule this Service Bulletin.

12 man-hours are necessary to do this modification.

Bombardier Aerospace does not pay for the labor to do this modification.

G. Material – Cost and Availability

Kit 100K23-20 or kit 100K23-20A is necessary to do this modification.

KIT NO.	PRICE
100K23-20 (20501 – 20520)	Please contact Bombardier Aerospace Parts Services, in Montreal, for delivery lead times and confirmation of prices.
100K23-20A (20521 – 20999)	

In addition to the kit shown above, the part in Paragraph 3. B. is necessary to do this modification.

CHALLENGER 350

MODEL BD-100-1A10 (CH-350)

Bombardier Aerospace does not pay for the kit and part to do this modification.

NOTE: Due to the lead-time required for obtaining kits and parts, operators are advised to order the kit and part in advance before scheduling the incorporation of this Service Bulletin. Please contact Bombardier Aerospace Parts Services, in Montreal, for delivery lead times and confirmation of prices.

For all parts transactions, Bombardier Aerospace's current Spare Parts and Component Repair Price Catalogue General Terms and Conditions apply. These terms and conditions are found on the Bombardier Customer Portal at:

my.businessaircraft.bombardier.com

H. Tooling

The equipment and tools listed below are necessary to do this modification:

GSE REFERENCE NO.	PART NO.	DESCRIPTION
20X-00-04	M1-G-Kit	Bonding Tester, Portable
23-71-01	TS200	Pinglite Tester
23X-51-01	H10-30	Ground Crew Interphone Headset
24-00-24	S4933959-501	Tag, Circuit Breaker

NOTES: 1. Refer to the CH 350 Illustrated Tool and Equipment Manual (ITEM) to make sure that you use the correct equipment configuration.

2. Refer to the Liability Statement in the ITEM for acceptable GSE equivalents.

I. Weight and Balance

WEIGHT	MOMENT
+6.5 pounds (2.9 kg)	+4,910.00 pound-inches (56.58 kgm)

J. Electrical Load Data

This modification increases the continuous load as follows:

BUS	AMPS	KW	KVAR
28 V dc L ESS BUS	1.84 amps (continuous)	-	-

CHALLENGER ³⁵⁰
MODEL BD-100-1A10 (CH-350)

K. References

- Bombardier Aerospace, Modification Summary, 100T010682, Rev. E.
- Bombardier Aerospace, Modification Summary, 100T090074, Rev. C-1.
- Bombardier Aerospace, Modification Summary, 100T091128, Rev. A.
- Bombardier Aerospace, Modification Summary, 100T091338, Rev. A.
- Bombardier Aerospace, Modification Summary, 100T091169, Rev. B.
- Bombardier Aerospace, Modification Summary, BB100T010766, Rev. A-1.
- Bombardier Aerospace, Kit Drawing, K1005357461, Rev. C.
- Bombardier Aerospace, Standard Practices Manual (SPM), Chapters 20 and 51.
- CH 350 Aircraft Maintenance Manual (AMM), Chapters 6, 23, 24, 52 and 53.
- CH 350 Structural Repair Manual (SRM), Chapter 51.
- CH 350 Supplementary Maintenance Manual (SMM), Chapter 25.
- Bombardier Aerospace, SB 350-00-002, Service Bulletin Description and Policy.
- Bombardier Aerospace, SB 350-31-004, "Modification – Flight–Data Recording System – Modification of the Power Source of the Cockpit Voice Recorder (CVR) and Flight Data Recorder (FDR)".

L. Other Publications Affected

None.

M. Equivalent Service Bulletin

For the Challenger 300 aircraft, use SB 100-23-20.

2. ACCOMPLISHMENT INSTRUCTIONS

NOTE: All references made to zones, access panels and/or doors, are from the CH 350 AMM, Chapter 6.

A. Aircraft Setup

NOTE: The steps in the Aircraft Setup section of this Service Bulletin are recommended steps. The steps give a recommendation to get access to the work area. This recommendation is to give a safe work area and to minimize possible damage to surrounding aircraft parts. Alternative steps can be used at the operator's discretion.

- (1) Obey all electrical/electronic safety precautions. Refer to AMM 24-00-00-910-801.
- (2) Obey all electrostatic-discharge safety precautions. Refer to AMM 24-00-00-910-802.
- (3) Open and tag the circuit breaker that follows:

CHALLENGER ³⁵⁰
MODEL BD-100-1A10 (CH-350)

CB PANEL	CB NO.	NAME	ZONE
RCBP	D7	CVR	212

- (4) Open the aft equipment compartment door 182GL. Refer to AMM 52-41-00-010-801.
- (5) Remove the access ladder to the aft equipment compartment, if it was installed at completion. Refer to CH 350 Supplementary Maintenance Manual (SMM), Chapter 25.
- (6) Remove the AFT COMPT LT light switch at the aft compartment door and keep the hardware for later installation.
- (7) Remove the aft equipment-compartment floor panel (311 BLF) located above the CVR and HF 2 transceiver. Refer to AMM 53-52-01-000-801.
- (8) Remove the CVR. Refer to AMM 23-71-01-000-801.
- (9) Remove the CVR tray. Refer to AMM 23-71-05-000-801.
- (10) Remove the HF 2 transceiver. Refer to AMM 23-12-01-000-801.
- (11) Remove the microphone and headphone jacks PL43J2 and PL43J3 from the aft compartment service panel. Refer to AMM 23-41-01-000-803.
- (12) Remove the lockwire from the PMAT and the FADEC connectors hardware. Refer to SPM-MM 20-50-00-000-801.
- (13) Remove the PMAT connector from the aft compartment service panel. Refer to SPM-WM 20-20-00.

NOTE: Be careful not to damage the hardware when you remove it and keep for later installation.

- (14) Remove the FADEC connector from the aft compartment service panel. Refer to SPM-WM 20-20-00.

NOTE: Be careful not to damage the hardware when you remove it and keep for later installation.

B. Modification

- NOTES:
1. If it is not possible to complete all the instructions in this Service Bulletin because of the configuration of the aircraft, submit an SRPSA for analysis and to get an approved disposition to complete this Service Bulletin.
 2. Refer to the attached Bombardier Aerospace Kit Drawing, K1005357461 for the instructions given in this paragraph.

CHALLENGER 350

MODEL BD-100-1A10 (CH-350)

- (1) Disassemble and discard existing CVR mounting tray support structure as given in the attached kit drawing and as follows:

NOTE: Be careful not to damage the fastener holes.

- (a) Remove the fasteners that attach the web, Part No. 1005357323-001, to the frame at FS 756.25. Refer to SRM 51-42-08.
- (b) Remove the fasteners that attach the web, Part No. 1005357323-001, to angle Part No. 1005357322. Refer to SRM 51-42-08.
- (c) Remove the fasteners that attach the channel, Part No. 1005357324-001, to the frame at FS772.24. Refer to SRM 51-42-08.
- (d) Remove the fasteners that attach the beam, Part No. 1005357325-001, to the intercostal Part No. 1005357321-001. Refer to SRM 51-42-08.
- (e) Remove the support structure from the aircraft.
- (f) On a work bench, disassemble the beam, Part No. 1005357325-001 and the web, Part No. 1005357323-001, from the channel Part No. 1005357324-001. Refer to SRM 51-42-08.
- (g) Keep the channel, Part No. 1005357324-001, for later installation.

- (2) Rework beam, Part No. 1005352910, as follows:

- (a) Trim the beam, Part No. 1005352910, as shown on sheet 1, view E.
- (b) Drill two 0.3125 (5/16) in (7.9375 mm) holes in beam, Part No. 1005352910, as shown in section G-G.

NOTE: These two holes are made to give easier access to the two top bolts for the removal/installation of the ULD in service.

- (c) Deburr the two holes and touch-up the reworked area. Refer to the finish code A032 in SRM 51-01-04 and to the notes that follow:

NOTES: 1. Refer to SRM 51-27-08 for the conversion coating to apply manually.

2. Apply top coat color white # 17875.

- (d) Identify the reworked beam as K1005357461-101. Use best shop practices for ink markings.

- (3) Install CVR mounting tray support-structure as follows:

- (a) Locate the web, Part No. 1005357462-003, as shown in section B-B.
- (b) Transfer drill existing holes, make sure to maintain the minimum required edge distance and attach temporarily. Refer to SRM 51-40-04.
- (c) Position the bracket, Part No. 1005357464-001S, as shown in section B-B and attach temporarily with clamps.
- (d) Drill the 0.098 in (2.490 mm) pilot holes from the web, Part No. 1005357462-003, through the bracket, Part No. 1005357464-001S and from the bracket, Part No. 1005357464-001S, through the frame at FS756.25 as shown in section B-B.

CHALLENGER 350

MODEL BD-100-1A10 (CH-350)

- (e) Position the channel, Part No. 1005357324-001, temporarily attach with sheet holder fasteners (Cleco's) at FS772.24 and clamp in position at FS756.25.
- (f) Transfer drill existing holes from the channel, Part No. 1005357324, through the bracket, Part No. 1005357464-001S and the web, Part No. 1005357462-003, then open pilot holes full size to a 0.161 in (4.090 mm) diameter. Make sure to maintain the minimum required edge distance. Refer to SRM 51-40-04.
- (g) Position the beam, Part No. 1005357463-001, where the removed beam, Part No. 1005357325, was located and attach temporarily with clamps.
- (h) Transfer drill existing holes from adjacent structure. Make sure to maintain the minimum required edge distance. Refer to SRM 51-40-04.
- (i) Disassemble the beam, the bracket, the channel and the web, deburr holes and prepare for installation.
- (j) On the work bench, assemble the support structure as follows:
 - (i) Assemble the beam, Part No. 1005357463-001, to the channel, Part No. 1005357324-001, with the appropriate fasteners as shown in the kit drawing. Refer to SRM 51-42-08.
 - (ii) Assemble the bracket, Part No. 1005357464-001S, to the channel, Part No. 1005357324-001, with the appropriate fasteners as shown in the kit drawing. Refer to SRM 51-42-08.
 - (iii) Assemble the web, Part No. 1005357462-003, to the channel, Part No. 1005357324-001 and the bracket, Part No. 1005357464-001S, with the appropriate fasteners as shown in the kit drawing. Refer to SRM 51-42-08.
- (k) Install the support structure in the aircraft and attach with the applicable fasteners as shown in the kit drawing. Refer to SRM 51-42-08.
- (l) Touch-up paint all the fasteners with top coat color white # 17875. Refer to SRM 51-01-08.
- (4) Install the microphone and headphone jacks PL43J2 and PL43J3 on the aft compartment service panel. Refer to AMM 23-41-01-400-803.
- (5) Install the FADEC connector on the aft compartment service panel. Refer to SPM-WM 20-20-00.
- (6) Safety the FADEC connectors hardware with lockwire. Refer to SPM-MM 20-50-00-400-801.
- (7) Install the CVR tray. Refer to AMM 23-71-05-400-801.

NOTE: For the electrical bonding test, the maximum permitted resistance is 2.5 milliohms.
- (8) Install the RIPS. Refer to AMM 23-71-25-400-801 but do not do the operational test of the CVR and the functional test of the RIPS at this time.

NOTE: For the electrical bonding test of the CVR, the maximum permitted resistance is 40 milliohms.
- (9) Install the HF 2 transceiver. Refer to AMM 23-12-01-400-801.

CHALLENGER 350
MODEL BD-100-1A10 (CH-350)

C. Testing

NOTE: If it is not possible to complete all the instructions in this Service Bulletin because of the configuration of the aircraft, submit an SRPSA for analysis and to get an approved disposition to complete this Service Bulletin.

- (1) Remove the tag and close the circuit breaker that follows:

CB PANEL	CB NO.	NAME	ZONE
RCBP	D7	CVR	212

- (2) Connect and energize the external dc power. Refer to AMM 24-41-00-861-801.
- (3) Do the operational test of the HF communication system only for the HF 2. Refer to AMM 23-12-00-710-801.
- (4) Do the operational test of the CVR system. Refer to AMM 23-71-00-710-801.
- (5) Do the functional test of the CVR ULD. Refer to AMM 23-71-21-720-801.
- (6) Do the functional test of the RIPS. Refer to AMM 23-71-25-720-801.
- (7) Remove the external dc power. Refer to AMM 24-41-00-861-802.

D. Close-out

NOTE: The steps in the Close-out section of this Service Bulletin, except for the return-to-service tests, are recommended steps. The steps give a recommendation to install components removed during the Aircraft Setup. This recommendation is to make sure that the aircraft is safe and ready to return to service. Alternative steps can be used at the operator's discretion.

- (1) Remove all tools, equipment and unwanted materials from the aircraft.
- (2) Install the aft equipment-compartment floor panel (311 BLF) above the CVR and HF 2 transceiver. Refer to AMM 53-52-01-400-801.
- (3) Install the AFT COMPT LT light switch at the aft compartment door with previously removed hardware.
- (4) Install the access ladder to the aft equipment compartment, if it was removed for access. Refer to the CH350 BD-100 SMM, Chapter 25.
- (5) Close the aft equipment compartment door 182GL. Refer to AMM 52-41-00-410-801.

E. Recording

When this Service Bulletin is completed, make an entry in the aircraft log and send the attached Incorporation Notice to Bombardier Business Aircraft Customer Services (BBACS).

CHALLENGER 350

MODEL BD-100-1A10 (CH-350)

In an effort to improve the quality of our technical communications, we are requesting your feedback. Please take a moment to fill out our easy on-line Service Bulletin survey:

<http://csefeedback.aero.bombardier.com>

3. MATERIAL INFORMATION

A. Kits

Kit 100K23-20 is necessary to do this Service Bulletin on aircraft, Serial No. **20501** to **20520** and contains the parts that follow:

NEW PART NO.	QTY	ITEM	USED PART NO.	INSTRUCTIONS - DISPOSITION
1005357462-001	1	Web	-	-
1005357463-001	1	Beam	-	-
1005357464-001S	1	Bracket	-	-
K1005357461-103	1	Electrical Identification	-	-
MS20470AD5-5A	30	Rivet	-	-
MS20470AD5-6A	15	Rivet	-	-
MS20470E5-5A	3	Rivet	-	-

Kit 100K23-20A is necessary to do this Service Bulletin on aircraft, Serial No. **20521** to **20999** and contains the parts that follow:

NEW PART NO.	QTY	ITEM	USED PART NO.	INSTRUCTIONS - DISPOSITION
1005357462-003	1	Web	-	-
1005357463-001	1	Beam	-	-
1005357464-001S	1	Bracket	-	-
K1005357461-103	1	Electrical Identification	-	-
MS20470AD5-5A	30	Rivet	-	-
MS20470AD5-6A	15	Rivet	-	-

CHALLENGER ³⁵⁰
MODEL BD-100-1A10 (CH-350)

NEW PART NO.	QTY	ITEM	USED PART NO.	INSTRUCTIONS - DISPOSITION
MS20470E5-5A	3	Rivet	-	-

- NOTES:**
1. In case of discrepancy between this list and the Service Bulletin Kit Parts List contained in the respective kit, then the later list prevails.
 2. The actual quantity for some of the hardware contained in the kit can be greater than the amount shown in the table as these items are supplied in prepackaged quantities.

B. Parts

The part that follows is necessary to do this Service Bulletin and is available from Bombardier Aerospace Parts Services, Montreal:

NEW PART NO.	QTY	ITEM	USED PART NO.	INSTRUCTIONS - DISPOSITION
100-2010-100	1	RIPS Type 2 Ni Cd	-	-

- NOTE:** The part number for the item listed above is subject to change without revision to this Service Bulletin. In case of discrepancy between this list and any other list, the Illustrated Parts Catalog prevails and shall be used to determine the latest part number.

C. Material

The materials that follow are necessary to do this Service Bulletin. These can be purchased from a local supplier. Bombardier Aerospace does not pay for these consumables.

DESCRIPTION	PART NO./NAME	SPECIFICATION	QUANTITY	SUPPLIER (SEE NOTE)
Coating, Chemical Conversion	Alodine 1200S	MIL-C-81706, Class 1A, Type II	As Necessary	Code: A
Epoxy Primer, Fluid Resistant	4500-P-23G (Green)	BAMS 565-001, Grade A	As Necessary	Code: B
Polyurethane, Clear	White # 17875	BAMS 565-002	As Necessary	Code: B

CHALLENGER 350

MODEL BD-100-1A10 (CH-350)

DESCRIPTION	PART NO./NAME	SPECIFICATION	QUANTITY	SUPPLIER (SEE NOTE)
Lockwire	MS20995C20	-	As Necessary	Code: C

- NOTES:**
1. Refer to the table that follows for each suppliers address listed by codes.
 2. The Curing Time (CT), if applicable, for each consumable material is indicated with the description of each product.
 3. At time of release of this Service Bulletin, the information on the supplier was valid and accurate. In the event that this information has changed, the operator is encouraged to use the World Wide Web to find a local supplier.

SUPPLIERS ADDRESSES BY CODES	
Code: A Henkel Technologies 32100 Stephenson Highway Madison Heights, MI, 48071 U.S.A. Tel.: (248) 583-9300 Fax.: (248) 583-2976 www.henkeln.com	Code: B Tempo Aerospace Incorporated 205 Fenmar Drive West Toronto, Ontario Canada M9L 2X4 Tel.: (416) 746-2233 Fax: (416) 746-2235 www.tempo-aerospace.com
Code: C Commercially Available	

D. Publications

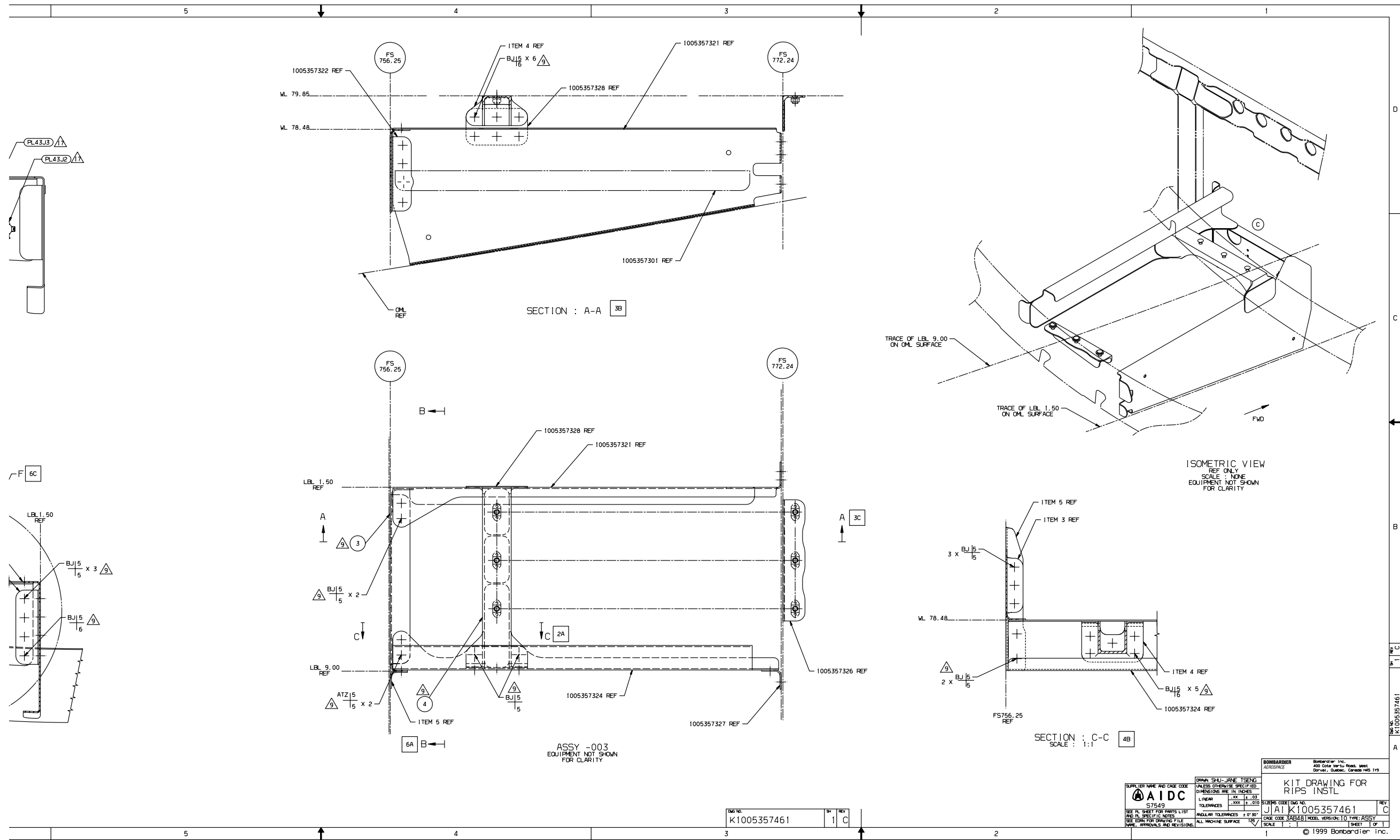
No publications required.

CHALLENGER 350

MODEL BD-100-1A10 (CH-350)

<p>BOMBARDIER AEROSPACE</p> <p>Bombardier Inc. 400 Cote Vertu Road, West Dorval, Quebec, Canada H4S 1Y9</p>	<p>DRAWN BY: SHU-JANE TSENG</p> <p>CAGE CODE 3AB48</p>	<p>SHEET 2</p>	<p>MS CODE A1</p>	<p>PL K1005357461</p>	<p>REV C</p>
<p>MODEL VERSION: 10 MODEL TYPE: ASSY</p>					
<p>NOTES</p> <ol style="list-style-type: none"> 1. FINISH SPEC PER BAERD BD 100-001. 2. FINISH CODES PER BAERD-GEN-004. 3. IDENTIFY PER BAPS 144-005. 4. DIMENSIONS AND TOLERANCES PER ASME Y14.5M-1994. 6. UNTOLERANCED DIMENSIONS AND FS, WL & BL LOCATIONS ARE BASIC. 7. INSTALL RIVETS PER BAPS 151-001 8. PART QTY PROD IS FOR REFERENCY ONLY, DO NOT GENERATE ON ORDER SPECIFICATION, PART REQUIREMENT FOR ORDER SPECIFICATION ARE CALLED-UP ON THE SYSTEM DEFINITION DRAWING S1002370003. 9. DISMANTLE AND DISCARD EXISTING WEB (1005357323), BEAM (1005357325) AND BRACKET (1005357329), PICK UP EXISTING FASTENER HOLES AND REINSTALL NEW PART OF WEB, BEAM AND BRACKET AS THIS KIT DRAWING SHOWN. 10. REIDENTIFY PART 1005352910 TO K1005357461-XXX(SHOWN IN PART LIST) PER BAPS 144-005 AFTER TRIMED. 11. STANDARD FABRICATION PER BAPS 188-000 12. TOUCH-UP TRIMMED AREA PER A032 WITH TOP COAT COLOR WHITE #17875 PER FED-STD-595 13. TOLERANCE FOR ALL TRIM AREA TO BE ±.030 14. INSTALL WIRING PER BAPS 145-003 15. APPLY MS20995C20 SAFETY WIRE PER BAPS150-003. 16. INSTALL AND FABRICATE ELECTRICAL IDENT (ITEM 10) PER BAPS 145-018. 17. REINSTALL ELECTRICAL CONNECTORS AND JACKS REUSING SAME HARDWARE. 					
<p>B10601-2 C14 REV 1999-01 © 1999 Bombardier Inc.</p> <p>K1005357461C-S -S2-PL</p>					

PL K1005357461 – Kit – RIPS Installation
(Sheet 2 of 2, Rev. C)



K1005357461 – Kit – RIPS Installation
(Sheet 1 of 1, Rev. C)

350-23-009
Page 15 of 16

Basic Issue: Jun 13/2014
Revision 03: Oct 30/2018

AIDC <small>SUPPLIER NAME AND CODE CODE S7549</small>		<small>DRAWN SHU-JANE TSENG DRAWS OTHER THAN THE SPECIFIED DIMENSIONS ARE IN INCHES</small>		<small>BOMBARDIER Inc. 400 Centre Vert Road, West Dorval, Quebec, Canada H4S 1Y9</small>	
<small>SEE PART SHEET FOR PARTS LIST AND PL SPECIFIC NOTES GET DATA FOR DRAWING FILE NAME, APPROVALS AND REVISIONS</small>		<small>LINEAR XXX ± .015</small>		<small>ANGULAR TOLERANCES ± 0°30'</small>	
<small>ALL MACHINING SURFACES</small>		<small>SCALE : 1:1</small>		<small>REVISIONS</small>	
<small>DATE : 10/30/18</small>		<small>BY : JAI</small>		<small>CHK : JAI</small>	
<small>NO. OF SHEETS : 1</small>		<small>SHEET : 1 OF 1</small>		<small>KIT DRAWING FOR RIPS INSTL</small>	
<small>NO. OF PARTS : 1</small>		<small>PART NO. : K1005357461</small>		<small>MODEL VERSION : 10 TYPE: ASSY</small>	
<small>NO. OF REV. : 3</small>		<small>REV. : C</small>		<small>© 1999 Bombardier Inc.</small>	

K1005357461-C

BOMBARDIER

SERVICE BULLETIN EVALUATION FORM

(Your ideas will help us provide better bulletins)

SERVICE BULLETIN: 350-23-009 **ISSUE:** Rev. 03 **DATED:** Oct 30/2018

TITLE: MODIFICATION – VOICE RECORDER SYSTEM –
INTRODUCTION OF THE RECORDER INDEPENDENT POWER SUPPLY
(RIPS) FOR THE COCKPIT VOICE RECORDER (CVR) OPTION (C23-511)

In an effort to improve the quality of our technical communications, we are replacing the standard **Service Bulletin Evaluation Form** with an on-line **Service Bulletin Survey** and we are requesting your feedback. Please take a moment to fill out our easy on-line Service Bulletin survey at:

<http://csefeedback.aero.bombardier.com>

BOMBARDIER

SERVICE BULLETIN INCORPORATION SHEET – "350–23–009"

BOMBARDIER SUBMISSION	<p>Upon completion of the Service Bulletin, please fill-in, fax to (514) 855–8798 or e-mail to Fracas at fracas.montreal@aero.bombardier.com</p> <p>If you're reporting Service Bulletin (SB) Incorporations to CAMP, sending this Incorporation Sheet to Bombardier is not mandatory. If your aircraft is on another tracking system, please contact Bombardier to make arrangements for automated data submission.</p>
----------------------------------	--

Service Bulletin Number	Rev.	* Parts Completed	COMPLIED WITH			Remarks/Reason (Mandatory if N/A)
			YES	NO	N/A	
350–23–009	03	_____	<input type="checkbox"/>	<input type="checkbox"/>	<input type="checkbox"/>	_____
_____	_____	_____	<input type="checkbox"/>	<input type="checkbox"/>	<input type="checkbox"/>	_____
_____	_____	_____	<input type="checkbox"/>	<input type="checkbox"/>	<input type="checkbox"/>	_____
_____	_____	_____	<input type="checkbox"/>	<input type="checkbox"/>	<input type="checkbox"/>	_____
_____	_____	_____	<input type="checkbox"/>	<input type="checkbox"/>	<input type="checkbox"/>	_____

Actual hours to accomplish Service Bulletin: _____

- * **NOTES:**
1. Where the Service Bulletin is divided into a number of parts (e.g., PARTS A, B, C, D, etc.) which can be carried out separately, indicate only those parts completed at this time.
 2. For repetitive checks (usually PART A) only the initial check should be reported unless otherwise stated in the Service Bulletin.
 3. When more than one part is carried out at the same time, each part should be reported.
 4. Fill in 'Remark/Reason' to explain compliance method when N/A is selected. (E.g. Part not installed, N/A by effectivity, N/A by Part Serial Number, etc.)
 5. PCW means 'Previously Complied With'.

Aircraft Serial No. _____	Aircraft Reg. No. _____
Airframe Hours: _____	Airframe Landings _____
S.B. Incorporation Date _____ (dd/mm/yy)	Service Order No. _____
Facility incorporating S.B. _____	
Name _____	Signature _____ Date _____ (dd/mm/yy)
Signature not required if sent by E-Mail	