

SERVICE BULLETIN INFORMATION SHEET

MODEL BD-100-1A10 (CH-350)

ATA 44-10

CABIN SYSTEMS

MODIFICATION - CABIN MANAGEMENT SYSTEM (CMS) – SYSTEM CONFIGURATION DATABASE SOFTWARE UPDATE

Service Bulletin No.: 350-44-001 **Issue:** Basic **Dated:** Jul 07/2015

The following data is supplied for information only. No revision to the Service Bulletin is necessary.

Keep this Information Sheet and the Information Sheet dated Feb 05/2016 with subject Service Bulletin. Discard the Information Sheet dated Jul 22/2015.

This Service Bulletin is currently being offered as part of the Challenger 350 Continuous Improvement Program.

Bombardier recommends that this modification be incorporated at your next convenient downtime.

Due to limited parts, advance scheduling may be required.

Bombardier recommends contacting your In-Service Implementation Team (ISIT) representative as soon as is practical to schedule your aircraft at the following email address: bbad_cip@aero.bombardier.com.

“The labor required to do this Service Bulletin is at no cost if:

- (i) the work is done at Bombardier Business Aviation Services (BBAS) or Authorized Service Facilities (ASF), and
- (ii) this Service Bulletin is scheduled in less than 24 months from the release date of this Information Sheet (Jul 22/2015).”

“The kits and/or parts required to do this Service Bulletin are available at no cost if a purchase order is sent to Bombardier within 24 months from the release of this information sheet (Jul 22/2015).”

SERVICE BULLETIN INFORMATION SHEET

BD-100-1A10 (CH-350)

ATA 44-10

CABIN SYSTEMS

**MODIFICATION - CABIN MANAGEMENT SYSTEM (CMS) - SYSTEM
CONFIGURATION DATABASE SOFTWARE UPDATE****Service Bulletin No.:** 350-44-001 **Issue:** Basic **Dated:** Jul 07/2015

The following data is supplied for information only. No revision to the Service Bulletin is necessary.

Keep this Information Sheet and the Information Sheet dated Feb 25/2016 with subject Service Bulletin. Discard the Information Sheet dated Feb 05/2016.

This Information Sheet is issued to inform operators of the following changes:

1. Lufthansa Technik Engineering Bulletin, SCDC3-EB44-0455 has been added to Paragraph 1.K. and it now reads as follows:

1.K. References

- Bombardier Aerospace Drawing BAS68028090, Rev B.
- Bombardier Aerospace, SB 350-00-002, Service Bulletin Description and Policy.
- Lufthansa Technik Engineering Bulletin SCDC3-EB44-0422 (attached).
- Lufthansa Technik Engineering Bulletin SCDC3-EB44-0423 (attached).
- Lufthansa Technik Engineering Bulletin SCDC3-EB44-0426 (attached).
- Lufthansa Technik Engineering Bulletin SCDC3-EB44-0431 (attached).
- Lufthansa Technik Engineering Bulletin SCDC3-EB44-0455 (attached).
- Lufthansa Technik Engineering Bulletin SCDC350-EB44-0299 (attached).
- Lufthansa Technik Engineering Bulletin SCDC350-EB44-0300 (attached).
- Lufthansa Technik Engineering Bulletin SCDC350-EB44-0301 (attached).
- Lufthansa Technik Engineering Bulletin SCDC350-EB44-0303 (attached).
- Lufthansa Technik Engineering Bulletin SCDC350-EB44-0308 (attached).
- Lufthansa Technik Engineering Bulletin SCDC350-EB44-0311 (attached).
- Lufthansa Technik Engineering Bulletin SCDC350-EB44-0312 (attached).
- Lufthansa Technik Engineering Bulletin SCDC350-EB44-0313 (attached).
- Lufthansa Technik Engineering Bulletin SCDC350-EB44-0316 (attached).

CHALLENGER 350

MODEL BD-100-1A10 (CH-350)

- Lufthansa Technik Engineering Bulletin SCDC350-EB44-0317 (attached).
 - Lufthansa Technik Engineering Bulletin SCDC350-EB44-0327 (attached).
 - Lufthansa Technik Engineering Bulletin SCDC350-EB44-0328 (attached).
 - Lufthansa Technik Engineering Bulletin SCDC350-EB44-0333 (attached).
 - Lufthansa Technik Engineering Bulletin SCDC350-EB44-0334 (attached).
 - Lufthansa Technik Engineering Bulletin SCDC350-EB44-0366 (attached).
 - Lufthansa Technik Engineering Bulletin SCDC350-EB44-0370 (attached).
 - Challenger 350 Aircraft Maintenance Manual (AMM), Chapters 6 and 24.
2. The Lufthansa Technik Engineering Bulletin also been added in Paragraph 2.C.(3). and it now reads as follows:

2.C. PART B – Modification CMS update (Applicable aircraft, Serial No. 20501 to 20517, 20519, 20524, 20526 and 20529):

- (3) Do the upgrade as given in the applicable Lufthansa Technik EB. Refer to the table that follow for applicable EB SCDC350-EB44-0XXX or SCDC3-EB44-0XXX.

AIRCRAFT SERIAL NO.	LUFTHANSA TECHNIK EB NO.
20501	SCDC350-EB44-0366
20502	SCDC350-EB44-0299
20503	SCDC350-EB44-0328
20504	SCDC3-EB44-0422
20505	SCDC350-EB44-0333
20506	SCDC350-EB44-0316
20507	SCDC350-EB44-0334
20508	SCDC350-EB44-0317
20509	SCDC350-EB44-0370
20510	SCDC350-EB44-0300
20511	SCDC350-EB44-0327
20512	SCDC350-EB44-0308
20513	SCDC350-EB44-0311
20514	SCDC350-EB44-0312
20515	SCDC3-EB44-0455

CHALLENGER ³⁵⁰
MODEL BD-100-1A10 (CH-350)

AIRCRAFT SERIAL NO.	LUFTHANSA TECHNIK EB NO.
20516	SCDC350-EB44-0313
20517	SCDC350-EB44-0301
20519	SCDC3-EB44-0426
20524	SCDC3-EB44-0431
20526	SCDC350-EB44-0303
20529	SCDC3-EB44-0423

SERVICE BULLETIN SUMMARY

This Service Bulletin is available at:
www.cic.bombardier.com

MODEL BD-100-1A10 (CL-350)

ATA 44-10

CABIN SYSTEMS

MODIFICATION - CABIN MANAGEMENT SYSTEM (CMS) - SYSTEM CONFIGURATION DATABASE SOFTWARE UPDATE

The information below is provided for your reference. For full details, including labor and part coverage, please see corresponding paragraph contained within this bulletin.

RECOMMENDED	COMPLIANCE TIME	
RELIABILITY/DISPATCHABILITY/COST AVOIDANCE	Not applicable	
EFFECTIVITY:	PART A: A/C Serial No. 20501 to 20509 PART B: A/C Serial No. 20501 to 20517 , 20519 , 20524 , 20526 and 20529	
MANPOWER:	PART A: 6 man-hours / PART B: 3 man-hours	
CONTINUED AIRWORTHINESS (CAW) FLEET CAMPAIGN	YES <input type="checkbox"/>	NO <input checked="" type="checkbox"/>
TLMC, CH 5 AFFECTED	YES <input type="checkbox"/>	NO <input checked="" type="checkbox"/>
KITS and/or PARTS	YES <input checked="" type="checkbox"/>	NO <input type="checkbox"/>
TOOLING/GSE	YES <input checked="" type="checkbox"/>	NO <input type="checkbox"/>
PLANNING INFORMATION: See important information at the start of Paragraph 1.	YES <input checked="" type="checkbox"/>	NO <input type="checkbox"/>
DEDICATED SCHEDULE	YES <input checked="" type="checkbox"/>	NO <input type="checkbox"/>
PREREQUISITE SERVICE BULLETINS: N/A		

To place an order for parts or kits, please call Bombardier Aerospace Parts Services at:

514-855-2999 or 1-866-538-1247

SERVICE BULLETIN

This Service Bulletin is available at:

www.cic.bombardier.com

MODEL BD-100-1A10 (CL-350)

ATA 44-10

CABIN SYSTEMS

MODIFICATION - CABIN MANAGEMENT SYSTEM (CMS) - SYSTEM CONFIGURATION DATABASE SOFTWARE UPDATE

1. PLANNING INFORMATION

NOTE: This Service Bulletin is covered by a dedicated schedule. Dedicated schedules are used to reserve and manage inventory due to limited availability of rotatable stock, parts and/or kits. Parts are limited, therefore, advance part scheduling with our In-Service Implementation Team (ISIT) is recommended prior to a maintenance visit. Please contact your Regional Manager (RM), Field Service Representative (FSR) or Customer Service Representative (CSR) to schedule your aircraft as there is a limited availability. The parts will be allocated on a first come first serve basis.

For more information on dedicated schedules, refer to SB 350-00-002.

A. Effectivity

PART A: BD-100-1A10 aircraft, Serial No. **20501** to **20509**.

PART B: BD-100-1A10 aircraft, Serial No. **20501** to **20517**, **20519**, **20524**, **20526** and **20529**.

NOTE: The instructions given in this Service Bulletin are only applicable to the systems and parts installed at the time of delivery of the aircraft or as changed by Bombardier Aerospace Service Bulletin(s).

Before you do this bulletin, examine all STC, STA or equivalent action changes to make sure that this bulletin can be completed.

Refer to applicable governmental agency regulations and requirements and make sure that the work described in this Service Bulletin is performed in compliance with manufacturer's recommendations and/or acceptable industry standards.

This document is proprietary to Bombardier Inc. and/or its affiliates and may not be reproduced or copied in any form or by any means without the prior written consent of Bombardier Inc. and/or its affiliates.

© 2015 Bombardier Inc. All rights reserved
Learjet, Challenger, Global, are registered trademarks of Bombardier Inc. or its subsidiaries.

CHALLENGER ³⁵⁰
MODEL BD-100-1A10 (CL-350)

B. Reason

This Service Bulletin modifies the wiring (on some aircraft) and update the CMS on all aircraft to provides the capacity for the passenger briefing pushbutton annunciator to remain on during passenger briefings and to address minor quality CMS software snags.

C. Description

This Service Bulletin gives instructions in PART A (Applicable to aircraft, Serial No. 20501 to 20509) to:

- Do the wiring modification in the forward wardrobe and in the flight compartment.

This Service Bulletin gives instructions in PART B (Applicable to aircraft, Serial No. 20501 to 20517, 20519, 20524, 20526 and 20529) to:

- Do the modification as given in the applicable Lufthansa Technik EB.

After PART A and/or PART B as applicable:

- Do the operational test of the Passenger Briefing System.

D. Compliance

Recommended – Reliability/Dispatchability/Cost Avoidance

E. Approval

The technical content of this Service Bulletin has been approved under the authority of TC STC number SA04-112, FAA STC number ST02047NY, and EASA STC number 10016423.

F. Manpower

NOTES: 1. The man-hours given are estimates to help you schedule the tasks given in this bulletin. The estimates are for direct labor performed by an experienced crew and do not include the time for familiarization, planning, aircraft preparation in hangar such as towing and positioning of scaffolds, removal of interior furnishings, repainting, supervision and inspection.

For more information related to the manpower estimates, refer to SB 100-00-02.

2. Labor hours are based on the fact that the modification will be done at the next scheduled maintenance task or inspection (e.g. 800 or 1600 hour inspection, or next A-check, etc.). Therefore no man-hours are allotted to prepare the aircraft for maintenance or to prepare for this Service Bulletin.

6 man-hours are necessary to do this PART A of this Service Bulletin.

CHALLENGER ³⁵⁰
MODEL BD-100-1A10 (CL-350)

3 man-hours are necessary to do this PART B of this Service Bulletin.

The labor required to do this Service Bulletin is at no cost, for aircraft in and out of completion warranty, if:

- the work is done at Bombardier Business Aviation Services (BBAS) or Authorized Service Facilities (ASF), and
- this Service Bulletin is scheduled in less than 12 months from its release date Basic Issue.

G. Material – Cost and Availability

The kit and part listed in Paragraphs 3.A. and 3.B. may be necessary to do this modification. Refer to the table that follows for the applicable aircraft effectivity:

KIT/PART NO.	ITEM	PRICE	AIRCRAFT EFFECTIVITY
350K44-001	Kit	Please contact Bombardier Aerospace Parts Services, in Montreal, for delivery lead times and confirmation of prices.	Aircraft, Serial No. 20501 to 20509 (PART A)
SCDC350-20XXX-Y (See note)	Software, System Configuration Database (USB-Stick)		Aircraft, Serial No. 20501 to 20517 , 20519 , 20524 , 20526 and 20529
<p>NOTE: Refer to Lufthansa Technik EB applicable to your aircraft for complete part number (XXX is the three last digits of the Aircraft Serial number, and -Y is the revision of the software, i.e. SDC350-20506-C is for Aircraft 20506 and software is at Revision C).</p>			

The kit and part are available at no cost, for aircraft in and out of warranty, if:

- a no-charge purchase order is sent to Bombardier Aerospace in less than 12 months from this Service Bulletin release date (Basic Issue).

This Service Bulletin is covered by a dedicated schedule. Dedicated schedules are used to reserve and manage inventory due to limited availability of rotatable stock, parts and/or kits. Parts are limited, therefore, advance part scheduling with our In-Service Implementation Team (ISIT) is recommended prior to a maintenance visit. Please contact your Regional Manager (RM), Field Service Representative (FSR) or Customer Service Representative (CSR) to schedule your aircraft as there is a limited availability. The parts will be allocated on a first come first serve basis.

For more information on dedicated schedules, refer to SB 350-00-002.

During or after the above free period, Smart Parts Plus does not pay for the kit.

CHALLENGER ³⁵⁰
MODEL BD-100-1A10 (CL-350)

H. Tooling

The equipment and tools listed below are necessary to do this modification:

GSE REFERENCE NO.	PART NO.	DESCRIPTION
24-00-24	54933959-501	Tag, Circuit Breaker

Refer to the Standard Practices Manual (SPM), Wiring Manual (WM), Chapter 20, and the table that follows for the tools applicable to the wiring modification:

LUG/CONTACT	WIRING TOOL (SEE NOTE 3)			
	CRIMP	POSITIONER	INSERTION	EXTRACTION
M39029/22-192	M22520/1-01	M22520/1-02	M81969/14-01	M81969/14-01
M39029/63-368	M22520/2-01	M22520/2-08	M81969/14-01	M81969/14-01
M39029/56-348	M22520/2-01	M22520/2-07	M81969/14-01	M81969/14-01

- NOTES:**
1. Refer to the CH-350 Illustrated Tool and Equipment Manual (ITEM) to make sure that you use the correct equipment configuration.
 2. Refer to the Liability Statement in the ITEM for acceptable GSE equivalents.
 3. This list is provided for a quick reference. In case of discrepancy between this list and the tool called out in the SPM-WM, Chapter 20, then the tool called in the SPM-WM will prevail. Other approved alternative tools are acceptable and can also be used.

I. Weight and Balance

No change.

J. Electrical Load Data

No change.

K. References

- Bombardier Aerospace Drawing BAS68028090, Rev B.
- Bombardier Aerospace, SB 350-00-002, Service Bulletin Description and Policy.
- Lufthansa Technik Engineering Bulletin SCDC350-EB44-0299 (attached).
- Lufthansa Technik Engineering Bulletin SCDC350-EB44-0300 (attached).
- Lufthansa Technik Engineering Bulletin SCDC350-EB44-0301 (attached).
- Lufthansa Technik Engineering Bulletin SCDC350-EB44-0303 (attached).

CHALLENGER 350

MODEL BD-100-1A10 (CL-350)

- Lufthansa Technik Engineering Bulletin SCDC350-EB44-0308 (attached).
- Lufthansa Technik Engineering Bulletin SCDC350-EB44-0311 (attached).
- Lufthansa Technik Engineering Bulletin SCDC350-EB44-0312 (attached).
- Lufthansa Technik Engineering Bulletin SCDC350-EB44-0313 (attached).
- Lufthansa Technik Engineering Bulletin SCDC350-EB44-0316 (attached).
- Challenger 350 Aircraft Maintenance Manual (AMM), Chapters 6 and 24.

L. Other Publications Affected

None.

M. Equivalent Service Bulletin

None.

2. ACCOMPLISHMENT INSTRUCTIONS

NOTE: All references made to zones, access panels and/or doors, are from the BD-100 AMM, Chapter 6.

A. Aircraft Setup

- (1) Obey all electrical/electronic safety precautions. Refer to AMM 24-00-00-910-801.
- (2) Obey all electrostatic discharge safety precautions. Refer to AMM 24-00-00-910-802.
- (3) Remove the electrical power from the aircraft. Refer to AMM 24-00-00-861-802.

B. PART A – Modification – Passenger Briefing System Wiring Change (Applicable to aircraft, Serial No. 20501 to 20509)

NOTE: It is possible to do the modification without removing the wardrobe, by using the different access panels of the wardrobe (example: Audio Power Amplifier access panel).

- (1) Do the modification as shown in Drawing BAS68028090 as follow:
 - (a) In the forward wardrobe, at the Ethernet Interface Unit (EIU) No. 1, disconnect the wires that follow from connector A84005P17:

WIRE	PIN
CLC3179-W7A-22	41
CLC3180-W7A-22	11

CHALLENGER 350

MODEL BD-100-1A10 (CL-350)

WIRE	PIN
CLC3182-W7A-22	40
CLC3181-W7A-22	26

- (b) Route the disconnected wires to EIU No. 1 connector A84005P18, and connect as follow:

WIRE	A84005P18 PIN
CLC3179-W7A-22	1
CLC3180-W7A-22	21
CLC3182-W7A-22	4
CLC3181-W7A-22	24

- (c) Install 4 new wires between EIU No. 1 connector A84005P18 and Terminal Module TM84035:

Wire	A84005P18 Pin	Contact	TM84035 pin	Contact
CLC3210-W7A-22	20	M39029/ 63-368	G	M39029/ 22-192
CLC3209-W7A-22	3		H	
CLC3208-W7A-22	23		J	
CLC3207-W7A-22	6		K	

- (d) Install a new wire CLC3211-W7A-22 between Terminal Module TM84035 pin L (with contact M39029/22-192) and TM84021 pin W (with contact M39029/22-191).
- (e) In the flight compartment, in the center pedestal, remove the briefing panel as follows:
- (i) Loosen the fasteners.
 - (ii) Remove the briefing panel.
 - (iii) Disconnect the connectors A84108P1 and A84108P2.
- (f) At the briefing panel connector A84108P2, remove the cap and unstow the wires that follow:

CHALLENGER ³⁵⁰
 MODEL BD-100-1A10 (CL-350)

CRL0044-W7A-22
CRL0045-W7A-22
CRL0046-W7A-22
CRL0047-W7A-22

(g) Connect the wires to briefing panel connector A84108P2 as follows:

WIRE	A84108P2 PIN	CONTACT
CRL0044-W7A-22	1	M39029/56-348
CRL0045-W7A-22	2	
CRL0046-W7A-22	3	
CRL0047-W7A-22	4	

(h) In the center pedestal, install the briefing panel as follows:

- (i) Connect the connectors A84108P1 and A84108P2.
- (ii) Put the briefing panel in position.
- (iii) Tighten the fasteners.

(2) Continue and complete PART B of this Service Bulletin.

C. PART B – Modification – CMS update (Applicable to aircraft, Serial No. 20501 to 20517, 20519, 20524, 20526 and 20529)

- (1) Connect electrical power to the aircraft. Refer to AMM 24-00-00-861-801.
- (2) In the flight compartment, on the CABIN control panel, set the DC PWR push button annunciator (PBA) to ON (the OFF PBA Light goes off).
- (3) Do the upgrade as given in the applicable Lufthansa Technik EB. Refer to the table that follow for applicable EB SCDC350-EB44-0XXX.

AIRCRAFT SERIAL NO.	LUFTHANSA TECHNIK EB NO.
20502	SCDC350-EB44-0299
20506	SCDC350-EB44-0316
20510	SCDC350-EB44-0300
20512	SCDC350-EB44-0308
20513	SCDC350-EB44-0311

CHALLENGER ³⁵⁰
MODEL BD-100-1A10 (CL-350)

AIRCRAFT SERIAL NO.	LUFTHANSA TECHNIK EB NO.
20514	SCDC350-EB44-0312
20516	SCDC350-EB44-0313
20517	SCDC350-EB44-0301
20526	SCDC350-EB44-0303

D. Testing (Applicable to aircraft, Serial No. 20501 to 20509)

- (1) In the flight compartment, do an operational test of the passenger briefing panel as follows:
 - (a) One at the time, push each PBA.
 - (b) Make sure that the passenger briefing PBA comes on during passenger briefing and goes off when passenger briefing is completed.

E. Close-out

- (1) Remove all tools, equipment and unwanted materials from the aircraft.
- (2) Remove electrical power to the aircraft. Refer to AMM 24-00-00-861-802.

F. Recording

When this Service Bulletin is completed, make an entry in the aircraft log and send the attached Incorporation Notice to Bombardier Business Aircraft Customer Services (BBACS).

In an effort to improve the quality of our technical communications, we are requesting your feedback. Please take a moment to fill out our easy on-line Service Bulletin survey:

<http://csefeedback.aero.bombardier.com>

3. MATERIAL INFORMATION

A. Kit

Kit 350K44-001 is necessary to do PART A of this Service Bulletin and contains the part that follows:

CHALLENGER ³⁵⁰
 MODEL BD-100-1A10 (CL-350)

NEW PART NO.	QTY	ITEM	USED PART NO.	INSTRUCTIONS - DISPOSITION
BAS68028090/01	1	Wire Kit	-	-

- NOTES:**
1. In case of discrepancy between this list and the Service Bulletin Kit Parts List contained in the respective kit, then the later list prevails.
 2. The actual quantity for some of the hardware contained in the kit can be greater than the amount shown in the table as these items are supplied in prepackaged quantities.

B. Part

The part that follows is necessary to do PART B of this Service Bulletin and is available from Bombardier Aerospace Parts Services, Montreal:

NEW PART NO.	QTY	ITEM	USED PART NO.	INSTRUCTIONS - DISPOSITION
SCDC350-20XXX-Y (see Note 2)	1	Software, System Configuration Database (USB-Stick)	-	-
<p>NOTES:</p> <ol style="list-style-type: none"> 1. The part number for the item listed above is subject to change without revision to this Service Bulletin. In case of discrepancy between this list and any other list, the Illustrated Parts Catalog prevails and shall be used to determine the latest part number. 2. Refer applicable EB from Lufthansa Technik applicable to aircraft for complete Part No. 				

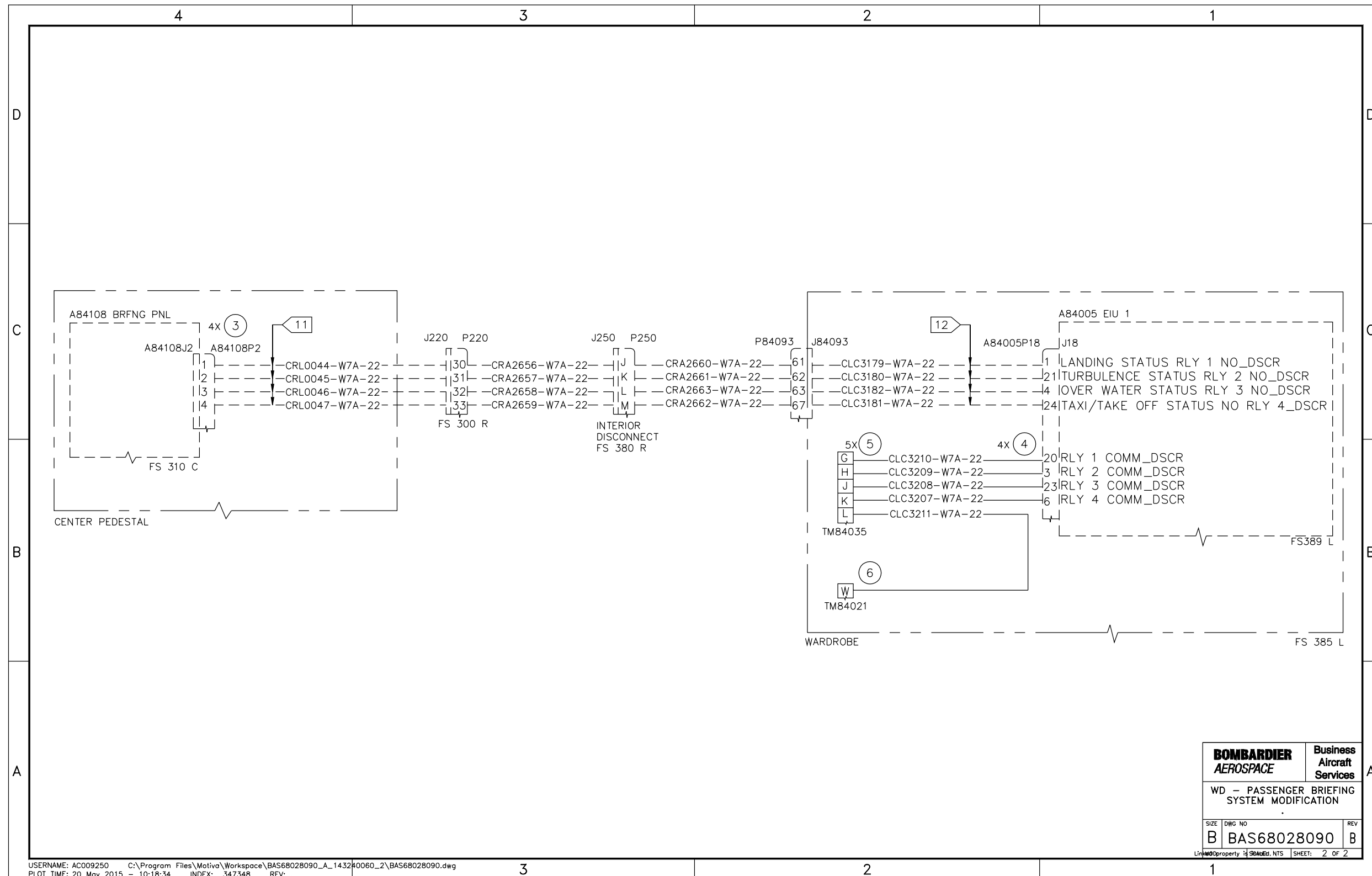
C. Material

No consumables required.

D. Publications

No publications required.

4	3	2	1																																				
<p>GENERAL NOTES: UNLESS OTHERWISE SPECIFIED</p> <p>1. INSTALL IAW STANDARD PRACTICES MANUAL, CHAPTER 20 – STANDARD PRACTICES – WIRING.</p> <p>2. ALL INSTALLED WIRE TO BE AS LISTED BELOW UNLESS OTHERWISE SPECIFIED: SINGLE WIRE TYPE TO BE IAW MIL-W-22759/34 OR MIL-W-22759/43. SINGLE WIRES WITHOUT WIRE IDENTIFICATION TO BE 22 AWG MINIMUM. SHIELDED AND/OR TWISTED CABLE TO BE IAW M27500 WITH BASIC WIRE SPEC CODE SD, OR SP. ALL SHIELDED M27500 WIRING TO HAVE JACKET MATERIAL TYPE 14 OR 23. ALL COAXIAL CABLE TO BE IAW MIL-C-17.</p> <p>3. ALL WIRES TO BE INSTALLED USING WIRE SEPARATION CODE ("W" CODE) IDENTIFIED AS FOLLOWS UNLESS OTHERWISE SPECIFIED (WIRE NUMBER PREFIX IS THE "W" CODE IDENTIFIER). REFER TO BOMBARDIER AIRCRAFT MODEL BD-100 WIRE LIST MANUAL FOR EACH EXISTING WIRE "W" CODE TO DETERMINE WHICH WIRE IDENTIFICATION BUNDLE CODES THE NEW WIRES MAY BE ROUTED WITH.</p> <p>2 REPRESENTS W2 DC DISTRIBUTION (DC POWER > 1 AMP) 4 REPRESENTS W4 AUDIO (ROUTE SEPARATELY) 7 REPRESENTS W7 OR W8 GENERAL (LOW PWR AC/DC & DATA BUS) 9 REPRESENTS W9 COAXIAL CABLES</p> <p>4. ----- INDICATES EXISTING WIRE OR COMPONENT OR REROUTED WIRING. ===== INDICATES EQUIPMENT OR WIRES TO BE DELETED. _____ INDICATES NEW. ●--- OR ●--- INDICATES CAP AND STOW WIRE. ⊗ INDICATES VENDOR-SUPPLIED EQUIPMENT. ○ INDICATES WIRES CONNECTED BETWEEN LIKE SYMBOLS.</p> <p>5. THE INTENT OF THIS DRAWING IS TO ACTIVATE THE PBA LIGHT FEEDBACK DURING PASSENGER BRIEFING.</p> <p>6. POWER REQUIREMENTS FOR LOAD ANALYSIS: NEGLIGEABLE</p> <p>7. AFTER INSTALLATION PROPER OPERATION NEEDS TO BE VERIFIED PER THE FOLLOWING PROCEDURE:</p> <p>I- ON PASSENGER BRIEFING CONTROL PANEL PRESS "TAXI/TO" PBA. ENSURE: TAXI/TO PBA COMES ON; ALL OTHER PBAs REMAIN "OFF"; TAXI/TO BRIEFING BEGINS TO PLAY IN CABIN SPEAKERS.</p> <p>II- PRESS "TAXI/TO" PBA. ENSURE: TAXI/TO PBA GOES OFF; ALL OTHER PBAs REMAIN OFF; TAXI/TO BRIEFING STOPS IN CABIN SPEAKERS</p> <p>III- REPEAT STEPS I & II WITH "OW", "TURB" & "LNDG" PBA.</p> <p>8. NOT USED</p> <p>9. REFERENCE BOMBARDIER AEROSPACE DRAWING W1004424113 "WD PASSENGER BRIEFING SYSTEM".</p> <p>10. TO BE DONE IN CONJUNCTION WITH LUFTHANSA TECHNIK CABIN MANAGEMENT SYSTEM SOFTWARE MODIFICATION.</p> <p>① CONNECT CAPED AND STOWED WIRES AS SHOWN.</p> <p>② DISCONNECT FROM CONNECTOR A84005P17 PIN 11, 26, 40 & 41 AND REWIRE AS SHOWN.</p>																																							
<table border="1" style="width:100%; border-collapse: collapse;"> <tr> <td style="width:5%;">1</td> <td style="width:5%;">6</td> <td style="width:20%;">M39029/22-191</td> <td style="width:40%;">CONTACT, PIN</td> <td style="width:10%;">QPL</td> <td style="width:10%;"></td> </tr> <tr> <td>5</td> <td>5</td> <td>M39029/22-192</td> <td>CONTACT, PIN</td> <td>QPL</td> <td></td> </tr> <tr> <td>4</td> <td>4</td> <td>M39029/63-368</td> <td>CONTACT, SOCKET</td> <td>QPL</td> <td></td> </tr> <tr> <td>4</td> <td>3</td> <td>M39029/56-348</td> <td>CONTACT, SOCKET</td> <td>QPL</td> <td></td> </tr> <tr> <td></td> <td></td> <td>-1</td> <td>INSTL</td> <td></td> <td></td> </tr> <tr> <td>-1</td> <td>QTY</td> <td>ITEM</td> <td>PART NUMBER</td> <td>DESCRIPTION</td> <td>MATERIAL</td> </tr> </table>				1	6	M39029/22-191	CONTACT, PIN	QPL		5	5	M39029/22-192	CONTACT, PIN	QPL		4	4	M39029/63-368	CONTACT, SOCKET	QPL		4	3	M39029/56-348	CONTACT, SOCKET	QPL				-1	INSTL			-1	QTY	ITEM	PART NUMBER	DESCRIPTION	MATERIAL
1	6	M39029/22-191	CONTACT, PIN	QPL																																			
5	5	M39029/22-192	CONTACT, PIN	QPL																																			
4	4	M39029/63-368	CONTACT, SOCKET	QPL																																			
4	3	M39029/56-348	CONTACT, SOCKET	QPL																																			
		-1	INSTL																																				
-1	QTY	ITEM	PART NUMBER	DESCRIPTION	MATERIAL																																		
<table border="1" style="width:100%; border-collapse: collapse;"> <tr> <td style="width:30%;"></td> <td style="width:15%; text-align:center;">B</td> <td style="width:15%; text-align:center;">A</td> <td style="width:10%; text-align:center;">REVISION</td> <td style="width:30%;"> <p>PROPRIETARY INFORMATION: THE INFORMATION CONTAINED ON THIS DOCUMENT IS PROPRIETARY TO BOMBARDIER AEROSPACE OR ONE OF ITS COMPANIES OR DIVISIONS AND MAY NOT BE REPRODUCED IN WHOLE OR IN PART FOR ANY PURPOSE WITHOUT THE WRITTEN PERMISSION OF BOMBARDIER AEROSPACE OR ONE OF ITS COMPANIES OR DIVISIONS.</p> <p>COPYRIGHT © 2014 BOMBARDIER INC. CODE IDENT: 3AB48</p> </td> </tr> <tr> <td></td> <td>SHT 1: ADD BOM ITEM 6. MODIFY ITEM 5 QTY (WAS 6). MODIFY FLAG NOTE 12 TO ADD PIN IDENT. SHT 2: CONTACT AT TM84021 PIN W WAS ITEM 5.</td> <td>SHT 1: NOTE 7 MODIFIED TO ADD RTS PROCEDURE. SHT 2: NC</td> <td style="text-align:center;">REVISION RECORD ◀</td> <td> <p>UNLESS OTHERWISE SPECIFIED DIMENSIONS ARE IN INCHES</p> <table border="1" style="width:100%; border-collapse: collapse;"> <tr> <td>LINEAR TOLERANCES</td> <td>ANGULAR TOLERANCES</td> <td>FORMED</td> </tr> <tr> <td>.XX = ±.03</td> <td>MACH. ± 2'</td> <td></td> </tr> <tr> <td>.XXX = ± .010</td> <td>± 0' 30'</td> <td></td> </tr> </table> <p>LES XXXX = LEARJET ENGR SPEC MPS XXX = CANADAIR MATERIALS AND PROCESSES SPECIFICATION MPS XXXX = BCCM MATERIALS AND PROCESSES SPECIFICATION S-XXX(X) = LEARJET ENGR STD S-XXXX = CANADAIR EXTRUSION NO.</p> <p>FINISH SPEC: ALL MACHINED SURFACES: 125 ✓</p> </td> </tr> <tr> <td></td> <td>A.CARRIERE-R. 2015-05-20</td> <td>F. RIENDEAU 2014-12-17</td> <td style="text-align:center;">DRAWN</td> <td rowspan="3"> <p>FINISH CODE: 125 ✓</p> </td> </tr> <tr> <td></td> <td>NSSR</td> <td>A. CARRIERE-R 2014-12-17</td> <td style="text-align:center;">STRESS/ENG</td> </tr> <tr> <td></td> <td>F.RIENDEAU 2015-05-20</td> <td>F. RIENDEAU 2014-12-17</td> <td style="text-align:center;">APVD</td> </tr> </table>					B	A	REVISION	<p>PROPRIETARY INFORMATION: THE INFORMATION CONTAINED ON THIS DOCUMENT IS PROPRIETARY TO BOMBARDIER AEROSPACE OR ONE OF ITS COMPANIES OR DIVISIONS AND MAY NOT BE REPRODUCED IN WHOLE OR IN PART FOR ANY PURPOSE WITHOUT THE WRITTEN PERMISSION OF BOMBARDIER AEROSPACE OR ONE OF ITS COMPANIES OR DIVISIONS.</p> <p>COPYRIGHT © 2014 BOMBARDIER INC. CODE IDENT: 3AB48</p>		SHT 1: ADD BOM ITEM 6. MODIFY ITEM 5 QTY (WAS 6). MODIFY FLAG NOTE 12 TO ADD PIN IDENT. SHT 2: CONTACT AT TM84021 PIN W WAS ITEM 5.	SHT 1: NOTE 7 MODIFIED TO ADD RTS PROCEDURE. SHT 2: NC	REVISION RECORD ◀	<p>UNLESS OTHERWISE SPECIFIED DIMENSIONS ARE IN INCHES</p> <table border="1" style="width:100%; border-collapse: collapse;"> <tr> <td>LINEAR TOLERANCES</td> <td>ANGULAR TOLERANCES</td> <td>FORMED</td> </tr> <tr> <td>.XX = ±.03</td> <td>MACH. ± 2'</td> <td></td> </tr> <tr> <td>.XXX = ± .010</td> <td>± 0' 30'</td> <td></td> </tr> </table> <p>LES XXXX = LEARJET ENGR SPEC MPS XXX = CANADAIR MATERIALS AND PROCESSES SPECIFICATION MPS XXXX = BCCM MATERIALS AND PROCESSES SPECIFICATION S-XXX(X) = LEARJET ENGR STD S-XXXX = CANADAIR EXTRUSION NO.</p> <p>FINISH SPEC: ALL MACHINED SURFACES: 125 ✓</p>	LINEAR TOLERANCES	ANGULAR TOLERANCES	FORMED	.XX = ±.03	MACH. ± 2'		.XXX = ± .010	± 0' 30'			A.CARRIERE-R. 2015-05-20	F. RIENDEAU 2014-12-17	DRAWN	<p>FINISH CODE: 125 ✓</p>		NSSR	A. CARRIERE-R 2014-12-17	STRESS/ENG		F.RIENDEAU 2015-05-20	F. RIENDEAU 2014-12-17	APVD				
	B	A	REVISION	<p>PROPRIETARY INFORMATION: THE INFORMATION CONTAINED ON THIS DOCUMENT IS PROPRIETARY TO BOMBARDIER AEROSPACE OR ONE OF ITS COMPANIES OR DIVISIONS AND MAY NOT BE REPRODUCED IN WHOLE OR IN PART FOR ANY PURPOSE WITHOUT THE WRITTEN PERMISSION OF BOMBARDIER AEROSPACE OR ONE OF ITS COMPANIES OR DIVISIONS.</p> <p>COPYRIGHT © 2014 BOMBARDIER INC. CODE IDENT: 3AB48</p>																																			
	SHT 1: ADD BOM ITEM 6. MODIFY ITEM 5 QTY (WAS 6). MODIFY FLAG NOTE 12 TO ADD PIN IDENT. SHT 2: CONTACT AT TM84021 PIN W WAS ITEM 5.	SHT 1: NOTE 7 MODIFIED TO ADD RTS PROCEDURE. SHT 2: NC	REVISION RECORD ◀	<p>UNLESS OTHERWISE SPECIFIED DIMENSIONS ARE IN INCHES</p> <table border="1" style="width:100%; border-collapse: collapse;"> <tr> <td>LINEAR TOLERANCES</td> <td>ANGULAR TOLERANCES</td> <td>FORMED</td> </tr> <tr> <td>.XX = ±.03</td> <td>MACH. ± 2'</td> <td></td> </tr> <tr> <td>.XXX = ± .010</td> <td>± 0' 30'</td> <td></td> </tr> </table> <p>LES XXXX = LEARJET ENGR SPEC MPS XXX = CANADAIR MATERIALS AND PROCESSES SPECIFICATION MPS XXXX = BCCM MATERIALS AND PROCESSES SPECIFICATION S-XXX(X) = LEARJET ENGR STD S-XXXX = CANADAIR EXTRUSION NO.</p> <p>FINISH SPEC: ALL MACHINED SURFACES: 125 ✓</p>	LINEAR TOLERANCES	ANGULAR TOLERANCES	FORMED	.XX = ±.03	MACH. ± 2'		.XXX = ± .010	± 0' 30'																											
LINEAR TOLERANCES	ANGULAR TOLERANCES	FORMED																																					
.XX = ±.03	MACH. ± 2'																																						
.XXX = ± .010	± 0' 30'																																						
	A.CARRIERE-R. 2015-05-20	F. RIENDEAU 2014-12-17	DRAWN	<p>FINISH CODE: 125 ✓</p>																																			
	NSSR	A. CARRIERE-R 2014-12-17	STRESS/ENG																																				
	F.RIENDEAU 2015-05-20	F. RIENDEAU 2014-12-17	APVD																																				
<table border="1" style="width:100%; border-collapse: collapse;"> <tr> <td style="width:20%;"></td> <td style="width:20%; text-align:center;">B</td> <td style="width:20%; text-align:center;">A</td> <td style="width:20%; text-align:center;">REVISION</td> <td style="width:20%;"> <p>UNLESS OTHERWISE SPECIFIED DIMENSIONS ARE IN INCHES</p> <table border="1" style="width:100%; border-collapse: collapse;"> <tr> <td>LINEAR TOLERANCES</td> <td>ANGULAR TOLERANCES</td> <td>FORMED</td> </tr> <tr> <td>.XX = ±.03</td> <td>MACH. ± 2'</td> <td></td> </tr> <tr> <td>.XXX = ± .010</td> <td>± 0' 30'</td> <td></td> </tr> </table> <p>LES XXXX = LEARJET ENGR SPEC MPS XXX = CANADAIR MATERIALS AND PROCESSES SPECIFICATION MPS XXXX = BCCM MATERIALS AND PROCESSES SPECIFICATION S-XXX(X) = LEARJET ENGR STD S-XXXX = CANADAIR EXTRUSION NO.</p> <p>FINISH SPEC: ALL MACHINED SURFACES: 125 ✓</p> </td> </tr> <tr> <td></td> <td>A.CARRIERE-R. 2015-05-20</td> <td>F. RIENDEAU 2014-12-17</td> <td style="text-align:center;">DRAWN</td> <td rowspan="3"> <p>FINISH CODE: 125 ✓</p> </td> </tr> <tr> <td></td> <td>NSSR</td> <td>A. CARRIERE-R 2014-12-17</td> <td style="text-align:center;">STRESS/ENG</td> </tr> <tr> <td></td> <td>F.RIENDEAU 2015-05-20</td> <td>F. RIENDEAU 2014-12-17</td> <td style="text-align:center;">APVD</td> </tr> </table>					B	A	REVISION	<p>UNLESS OTHERWISE SPECIFIED DIMENSIONS ARE IN INCHES</p> <table border="1" style="width:100%; border-collapse: collapse;"> <tr> <td>LINEAR TOLERANCES</td> <td>ANGULAR TOLERANCES</td> <td>FORMED</td> </tr> <tr> <td>.XX = ±.03</td> <td>MACH. ± 2'</td> <td></td> </tr> <tr> <td>.XXX = ± .010</td> <td>± 0' 30'</td> <td></td> </tr> </table> <p>LES XXXX = LEARJET ENGR SPEC MPS XXX = CANADAIR MATERIALS AND PROCESSES SPECIFICATION MPS XXXX = BCCM MATERIALS AND PROCESSES SPECIFICATION S-XXX(X) = LEARJET ENGR STD S-XXXX = CANADAIR EXTRUSION NO.</p> <p>FINISH SPEC: ALL MACHINED SURFACES: 125 ✓</p>	LINEAR TOLERANCES	ANGULAR TOLERANCES	FORMED	.XX = ±.03	MACH. ± 2'		.XXX = ± .010	± 0' 30'			A.CARRIERE-R. 2015-05-20	F. RIENDEAU 2014-12-17	DRAWN	<p>FINISH CODE: 125 ✓</p>		NSSR	A. CARRIERE-R 2014-12-17	STRESS/ENG		F.RIENDEAU 2015-05-20	F. RIENDEAU 2014-12-17	APVD									
	B	A	REVISION	<p>UNLESS OTHERWISE SPECIFIED DIMENSIONS ARE IN INCHES</p> <table border="1" style="width:100%; border-collapse: collapse;"> <tr> <td>LINEAR TOLERANCES</td> <td>ANGULAR TOLERANCES</td> <td>FORMED</td> </tr> <tr> <td>.XX = ±.03</td> <td>MACH. ± 2'</td> <td></td> </tr> <tr> <td>.XXX = ± .010</td> <td>± 0' 30'</td> <td></td> </tr> </table> <p>LES XXXX = LEARJET ENGR SPEC MPS XXX = CANADAIR MATERIALS AND PROCESSES SPECIFICATION MPS XXXX = BCCM MATERIALS AND PROCESSES SPECIFICATION S-XXX(X) = LEARJET ENGR STD S-XXXX = CANADAIR EXTRUSION NO.</p> <p>FINISH SPEC: ALL MACHINED SURFACES: 125 ✓</p>	LINEAR TOLERANCES	ANGULAR TOLERANCES	FORMED	.XX = ±.03	MACH. ± 2'		.XXX = ± .010	± 0' 30'																											
LINEAR TOLERANCES	ANGULAR TOLERANCES	FORMED																																					
.XX = ±.03	MACH. ± 2'																																						
.XXX = ± .010	± 0' 30'																																						
	A.CARRIERE-R. 2015-05-20	F. RIENDEAU 2014-12-17	DRAWN	<p>FINISH CODE: 125 ✓</p>																																			
	NSSR	A. CARRIERE-R 2014-12-17	STRESS/ENG																																				
	F.RIENDEAU 2015-05-20	F. RIENDEAU 2014-12-17	APVD																																				
<table border="1" style="width:100%; border-collapse: collapse;"> <tr> <td style="width:20%;"></td> <td style="width:20%; text-align:center;">B</td> <td style="width:20%; text-align:center;">A</td> <td style="width:20%; text-align:center;">REVISION</td> <td style="width:20%;"> <p>UNLESS OTHERWISE SPECIFIED DIMENSIONS ARE IN INCHES</p> <table border="1" style="width:100%; border-collapse: collapse;"> <tr> <td>LINEAR TOLERANCES</td> <td>ANGULAR TOLERANCES</td> <td>FORMED</td> </tr> <tr> <td>.XX = ±.03</td> <td>MACH. ± 2'</td> <td></td> </tr> <tr> <td>.XXX = ± .010</td> <td>± 0' 30'</td> <td></td> </tr> </table> <p>LES XXXX = LEARJET ENGR SPEC MPS XXX = CANADAIR MATERIALS AND PROCESSES SPECIFICATION MPS XXXX = BCCM MATERIALS AND PROCESSES SPECIFICATION S-XXX(X) = LEARJET ENGR STD S-XXXX = CANADAIR EXTRUSION NO.</p> <p>FINISH SPEC: ALL MACHINED SURFACES: 125 ✓</p> </td> </tr> <tr> <td></td> <td>A.CARRIERE-R. 2015-05-20</td> <td>F. RIENDEAU 2014-12-17</td> <td style="text-align:center;">DRAWN</td> <td rowspan="3"> <p>FINISH CODE: 125 ✓</p> </td> </tr> <tr> <td></td> <td>NSSR</td> <td>A. CARRIERE-R 2014-12-17</td> <td style="text-align:center;">STRESS/ENG</td> </tr> <tr> <td></td> <td>F.RIENDEAU 2015-05-20</td> <td>F. RIENDEAU 2014-12-17</td> <td style="text-align:center;">APVD</td> </tr> </table>					B	A	REVISION	<p>UNLESS OTHERWISE SPECIFIED DIMENSIONS ARE IN INCHES</p> <table border="1" style="width:100%; border-collapse: collapse;"> <tr> <td>LINEAR TOLERANCES</td> <td>ANGULAR TOLERANCES</td> <td>FORMED</td> </tr> <tr> <td>.XX = ±.03</td> <td>MACH. ± 2'</td> <td></td> </tr> <tr> <td>.XXX = ± .010</td> <td>± 0' 30'</td> <td></td> </tr> </table> <p>LES XXXX = LEARJET ENGR SPEC MPS XXX = CANADAIR MATERIALS AND PROCESSES SPECIFICATION MPS XXXX = BCCM MATERIALS AND PROCESSES SPECIFICATION S-XXX(X) = LEARJET ENGR STD S-XXXX = CANADAIR EXTRUSION NO.</p> <p>FINISH SPEC: ALL MACHINED SURFACES: 125 ✓</p>	LINEAR TOLERANCES	ANGULAR TOLERANCES	FORMED	.XX = ±.03	MACH. ± 2'		.XXX = ± .010	± 0' 30'			A.CARRIERE-R. 2015-05-20	F. RIENDEAU 2014-12-17	DRAWN	<p>FINISH CODE: 125 ✓</p>		NSSR	A. CARRIERE-R 2014-12-17	STRESS/ENG		F.RIENDEAU 2015-05-20	F. RIENDEAU 2014-12-17	APVD									
	B	A	REVISION	<p>UNLESS OTHERWISE SPECIFIED DIMENSIONS ARE IN INCHES</p> <table border="1" style="width:100%; border-collapse: collapse;"> <tr> <td>LINEAR TOLERANCES</td> <td>ANGULAR TOLERANCES</td> <td>FORMED</td> </tr> <tr> <td>.XX = ±.03</td> <td>MACH. ± 2'</td> <td></td> </tr> <tr> <td>.XXX = ± .010</td> <td>± 0' 30'</td> <td></td> </tr> </table> <p>LES XXXX = LEARJET ENGR SPEC MPS XXX = CANADAIR MATERIALS AND PROCESSES SPECIFICATION MPS XXXX = BCCM MATERIALS AND PROCESSES SPECIFICATION S-XXX(X) = LEARJET ENGR STD S-XXXX = CANADAIR EXTRUSION NO.</p> <p>FINISH SPEC: ALL MACHINED SURFACES: 125 ✓</p>	LINEAR TOLERANCES	ANGULAR TOLERANCES	FORMED	.XX = ±.03	MACH. ± 2'		.XXX = ± .010	± 0' 30'																											
LINEAR TOLERANCES	ANGULAR TOLERANCES	FORMED																																					
.XX = ±.03	MACH. ± 2'																																						
.XXX = ± .010	± 0' 30'																																						
	A.CARRIERE-R. 2015-05-20	F. RIENDEAU 2014-12-17	DRAWN	<p>FINISH CODE: 125 ✓</p>																																			
	NSSR	A. CARRIERE-R 2014-12-17	STRESS/ENG																																				
	F.RIENDEAU 2015-05-20	F. RIENDEAU 2014-12-17	APVD																																				
<table border="1" style="width:100%; border-collapse: collapse;"> <tr> <td style="width:20%;"></td> <td style="width:20%; text-align:center;">B</td> <td style="width:20%; text-align:center;">A</td> <td style="width:20%; text-align:center;">REVISION</td> <td style="width:20%;"> <p>UNLESS OTHERWISE SPECIFIED DIMENSIONS ARE IN INCHES</p> <table border="1" style="width:100%; border-collapse: collapse;"> <tr> <td>LINEAR TOLERANCES</td> <td>ANGULAR TOLERANCES</td> <td>FORMED</td> </tr> <tr> <td>.XX = ±.03</td> <td>MACH. ± 2'</td> <td></td> </tr> <tr> <td>.XXX = ± .010</td> <td>± 0' 30'</td> <td></td> </tr> </table> <p>LES XXXX = LEARJET ENGR SPEC MPS XXX = CANADAIR MATERIALS AND PROCESSES SPECIFICATION MPS XXXX = BCCM MATERIALS AND PROCESSES SPECIFICATION S-XXX(X) = LEARJET ENGR STD S-XXXX = CANADAIR EXTRUSION NO.</p> <p>FINISH SPEC: ALL MACHINED SURFACES: 125 ✓</p> </td> </tr> <tr> <td></td> <td>A.CARRIERE-R. 2015-05-20</td> <td>F. RIENDEAU 2014-12-17</td> <td style="text-align:center;">DRAWN</td> <td rowspan="3"> <p>FINISH CODE: 125 ✓</p> </td> </tr> <tr> <td></td> <td>NSSR</td> <td>A. CARRIERE-R 2014-12-17</td> <td style="text-align:center;">STRESS/ENG</td> </tr> <tr> <td></td> <td>F.RIENDEAU 2015-05-20</td> <td>F. RIENDEAU 2014-12-17</td> <td style="text-align:center;">APVD</td> </tr> </table>					B	A	REVISION	<p>UNLESS OTHERWISE SPECIFIED DIMENSIONS ARE IN INCHES</p> <table border="1" style="width:100%; border-collapse: collapse;"> <tr> <td>LINEAR TOLERANCES</td> <td>ANGULAR TOLERANCES</td> <td>FORMED</td> </tr> <tr> <td>.XX = ±.03</td> <td>MACH. ± 2'</td> <td></td> </tr> <tr> <td>.XXX = ± .010</td> <td>± 0' 30'</td> <td></td> </tr> </table> <p>LES XXXX = LEARJET ENGR SPEC MPS XXX = CANADAIR MATERIALS AND PROCESSES SPECIFICATION MPS XXXX = BCCM MATERIALS AND PROCESSES SPECIFICATION S-XXX(X) = LEARJET ENGR STD S-XXXX = CANADAIR EXTRUSION NO.</p> <p>FINISH SPEC: ALL MACHINED SURFACES: 125 ✓</p>	LINEAR TOLERANCES	ANGULAR TOLERANCES	FORMED	.XX = ±.03	MACH. ± 2'		.XXX = ± .010	± 0' 30'			A.CARRIERE-R. 2015-05-20	F. RIENDEAU 2014-12-17	DRAWN	<p>FINISH CODE: 125 ✓</p>		NSSR	A. CARRIERE-R 2014-12-17	STRESS/ENG		F.RIENDEAU 2015-05-20	F. RIENDEAU 2014-12-17	APVD									
	B	A	REVISION	<p>UNLESS OTHERWISE SPECIFIED DIMENSIONS ARE IN INCHES</p> <table border="1" style="width:100%; border-collapse: collapse;"> <tr> <td>LINEAR TOLERANCES</td> <td>ANGULAR TOLERANCES</td> <td>FORMED</td> </tr> <tr> <td>.XX = ±.03</td> <td>MACH. ± 2'</td> <td></td> </tr> <tr> <td>.XXX = ± .010</td> <td>± 0' 30'</td> <td></td> </tr> </table> <p>LES XXXX = LEARJET ENGR SPEC MPS XXX = CANADAIR MATERIALS AND PROCESSES SPECIFICATION MPS XXXX = BCCM MATERIALS AND PROCESSES SPECIFICATION S-XXX(X) = LEARJET ENGR STD S-XXXX = CANADAIR EXTRUSION NO.</p> <p>FINISH SPEC: ALL MACHINED SURFACES: 125 ✓</p>	LINEAR TOLERANCES	ANGULAR TOLERANCES	FORMED	.XX = ±.03	MACH. ± 2'		.XXX = ± .010	± 0' 30'																											
LINEAR TOLERANCES	ANGULAR TOLERANCES	FORMED																																					
.XX = ±.03	MACH. ± 2'																																						
.XXX = ± .010	± 0' 30'																																						
	A.CARRIERE-R. 2015-05-20	F. RIENDEAU 2014-12-17	DRAWN	<p>FINISH CODE: 125 ✓</p>																																			
	NSSR	A. CARRIERE-R 2014-12-17	STRESS/ENG																																				
	F.RIENDEAU 2015-05-20	F. RIENDEAU 2014-12-17	APVD																																				
<table border="1" style="width:100%; border-collapse: collapse;"> <tr> <td style="width:20%;"></td> <td style="width:20%; text-align:center;">B</td> <td style="width:20%; text-align:center;">A</td> <td style="width:20%; text-align:center;">REVISION</td> <td style="width:20%;"> <p>UNLESS OTHERWISE SPECIFIED DIMENSIONS ARE IN INCHES</p> <table border="1" style="width:100%; border-collapse: collapse;"> <tr> <td>LINEAR TOLERANCES</td> <td>ANGULAR TOLERANCES</td> <td>FORMED</td> </tr> <tr> <td>.XX = ±.03</td> <td>MACH. ± 2'</td> <td></td> </tr> <tr> <td>.XXX = ± .010</td> <td>± 0' 30'</td> <td></td> </tr> </table> <p>LES XXXX = LEARJET ENGR SPEC MPS XXX = CANADAIR MATERIALS AND PROCESSES SPECIFICATION MPS XXXX = BCCM MATERIALS AND PROCESSES SPECIFICATION S-XXX(X) = LEARJET ENGR STD S-XXXX = CANADAIR EXTRUSION NO.</p> <p>FINISH SPEC: ALL MACHINED SURFACES: 125 ✓</p> </td> </tr> <tr> <td></td> <td>A.CARRIERE-R. 2015-05-20</td> <td>F. RIENDEAU 2014-12-17</td> <td style="text-align:center;">DRAWN</td> <td rowspan="3"> <p>FINISH CODE: 125 ✓</p> </td> </tr> <tr> <td></td> <td>NSSR</td> <td>A. CARRIERE-R 2014-12-17</td> <td style="text-align:center;">STRESS/ENG</td> </tr> <tr> <td></td> <td>F.RIENDEAU 2015-05-20</td> <td>F. RIENDEAU 2014-12-17</td> <td style="text-align:center;">APVD</td> </tr> </table>					B	A	REVISION	<p>UNLESS OTHERWISE SPECIFIED DIMENSIONS ARE IN INCHES</p> <table border="1" style="width:100%; border-collapse: collapse;"> <tr> <td>LINEAR TOLERANCES</td> <td>ANGULAR TOLERANCES</td> <td>FORMED</td> </tr> <tr> <td>.XX = ±.03</td> <td>MACH. ± 2'</td> <td></td> </tr> <tr> <td>.XXX = ± .010</td> <td>± 0' 30'</td> <td></td> </tr> </table> <p>LES XXXX = LEARJET ENGR SPEC MPS XXX = CANADAIR MATERIALS AND PROCESSES SPECIFICATION MPS XXXX = BCCM MATERIALS AND PROCESSES SPECIFICATION S-XXX(X) = LEARJET ENGR STD S-XXXX = CANADAIR EXTRUSION NO.</p> <p>FINISH SPEC: ALL MACHINED SURFACES: 125 ✓</p>	LINEAR TOLERANCES	ANGULAR TOLERANCES	FORMED	.XX = ±.03	MACH. ± 2'		.XXX = ± .010	± 0' 30'			A.CARRIERE-R. 2015-05-20	F. RIENDEAU 2014-12-17	DRAWN	<p>FINISH CODE: 125 ✓</p>		NSSR	A. CARRIERE-R 2014-12-17	STRESS/ENG		F.RIENDEAU 2015-05-20	F. RIENDEAU 2014-12-17	APVD									
	B	A	REVISION	<p>UNLESS OTHERWISE SPECIFIED DIMENSIONS ARE IN INCHES</p> <table border="1" style="width:100%; border-collapse: collapse;"> <tr> <td>LINEAR TOLERANCES</td> <td>ANGULAR TOLERANCES</td> <td>FORMED</td> </tr> <tr> <td>.XX = ±.03</td> <td>MACH. ± 2'</td> <td></td> </tr> <tr> <td>.XXX = ± .010</td> <td>± 0' 30'</td> <td></td> </tr> </table> <p>LES XXXX = LEARJET ENGR SPEC MPS XXX = CANADAIR MATERIALS AND PROCESSES SPECIFICATION MPS XXXX = BCCM MATERIALS AND PROCESSES SPECIFICATION S-XXX(X) = LEARJET ENGR STD S-XXXX = CANADAIR EXTRUSION NO.</p> <p>FINISH SPEC: ALL MACHINED SURFACES: 125 ✓</p>	LINEAR TOLERANCES	ANGULAR TOLERANCES	FORMED	.XX = ±.03	MACH. ± 2'		.XXX = ± .010	± 0' 30'																											
LINEAR TOLERANCES	ANGULAR TOLERANCES	FORMED																																					
.XX = ±.03	MACH. ± 2'																																						
.XXX = ± .010	± 0' 30'																																						
	A.CARRIERE-R. 2015-05-20	F. RIENDEAU 2014-12-17	DRAWN	<p>FINISH CODE: 125 ✓</p>																																			
	NSSR	A. CARRIERE-R 2014-12-17	STRESS/ENG																																				
	F.RIENDEAU 2015-05-20	F. RIENDEAU 2014-12-17	APVD																																				
<table border="1" style="width:100%; border-collapse: collapse;"> <tr> <td style="width:20%;"></td> <td style="width:20%; text-align:center;">B</td> <td style="width:20%; text-align:center;">A</td> <td style="width:20%; text-align:center;">REVISION</td> <td style="width:20%;"> <p>UNLESS OTHERWISE SPECIFIED DIMENSIONS ARE IN INCHES</p> <table border="1" style="width:100%; border-collapse: collapse;"> <tr> <td>LINEAR TOLERANCES</td> <td>ANGULAR TOLERANCES</td> <td>FORMED</td> </tr> <tr> <td>.XX = ±.03</td> <td>MACH. ± 2'</td> <td></td> </tr> <tr> <td>.XXX = ± .010</td> <td>± 0' 30'</td> <td></td> </tr> </table> <p>LES XXXX = LEARJET ENGR SPEC MPS XXX = CANADAIR MATERIALS AND PROCESSES SPECIFICATION MPS XXXX = BCCM MATERIALS AND PROCESSES SPECIFICATION S-XXX(X) = LEARJET ENGR STD S-XXXX = CANADAIR EXTRUSION NO.</p> <p>FINISH SPEC: ALL MACHINED SURFACES: 125 ✓</p> </td> </tr> <tr> <td></td> <td>A.CARRIERE-R. 2015-05-20</td> <td>F. RIENDEAU 2014-12-17</td> <td style="text-align:center;">DRAWN</td> <td rowspan="3"> <p>FINISH CODE: 125 ✓</p> </td> </tr> <tr> <td></td> <td>NSSR</td> <td>A. CARRIERE-R 2014-12-17</td> <td style="text-align:center;">STRESS/ENG</td> </tr> <tr> <td></td> <td>F.RIENDEAU 2015-05-20</td> <td>F. RIENDEAU 2014-12-17</td> <td style="text-align:center;">APVD</td> </tr> </table>					B	A	REVISION	<p>UNLESS OTHERWISE SPECIFIED DIMENSIONS ARE IN INCHES</p> <table border="1" style="width:100%; border-collapse: collapse;"> <tr> <td>LINEAR TOLERANCES</td> <td>ANGULAR TOLERANCES</td> <td>FORMED</td> </tr> <tr> <td>.XX = ±.03</td> <td>MACH. ± 2'</td> <td></td> </tr> <tr> <td>.XXX = ± .010</td> <td>± 0' 30'</td> <td></td> </tr> </table> <p>LES XXXX = LEARJET ENGR SPEC MPS XXX = CANADAIR MATERIALS AND PROCESSES SPECIFICATION MPS XXXX = BCCM MATERIALS AND PROCESSES SPECIFICATION S-XXX(X) = LEARJET ENGR STD S-XXXX = CANADAIR EXTRUSION NO.</p> <p>FINISH SPEC: ALL MACHINED SURFACES: 125 ✓</p>	LINEAR TOLERANCES	ANGULAR TOLERANCES	FORMED	.XX = ±.03	MACH. ± 2'		.XXX = ± .010	± 0' 30'			A.CARRIERE-R. 2015-05-20	F. RIENDEAU 2014-12-17	DRAWN	<p>FINISH CODE: 125 ✓</p>		NSSR	A. CARRIERE-R 2014-12-17	STRESS/ENG		F.RIENDEAU 2015-05-20	F. RIENDEAU 2014-12-17	APVD									
	B	A	REVISION	<p>UNLESS OTHERWISE SPECIFIED DIMENSIONS ARE IN INCHES</p> <table border="1" style="width:100%; border-collapse: collapse;"> <tr> <td>LINEAR TOLERANCES</td> <td>ANGULAR TOLERANCES</td> <td>FORMED</td> </tr> <tr> <td>.XX = ±.03</td> <td>MACH. ± 2'</td> <td></td> </tr> <tr> <td>.XXX = ± .010</td> <td>± 0' 30'</td> <td></td> </tr> </table> <p>LES XXXX = LEARJET ENGR SPEC MPS XXX = CANADAIR MATERIALS AND PROCESSES SPECIFICATION MPS XXXX = BCCM MATERIALS AND PROCESSES SPECIFICATION S-XXX(X) = LEARJET ENGR STD S-XXXX = CANADAIR EXTRUSION NO.</p> <p>FINISH SPEC: ALL MACHINED SURFACES: 125 ✓</p>	LINEAR TOLERANCES	ANGULAR TOLERANCES	FORMED	.XX = ±.03	MACH. ± 2'		.XXX = ± .010	± 0' 30'																											
LINEAR TOLERANCES	ANGULAR TOLERANCES	FORMED																																					
.XX = ±.03	MACH. ± 2'																																						
.XXX = ± .010	± 0' 30'																																						
	A.CARRIERE-R. 2015-05-20	F. RIENDEAU 2014-12-17	DRAWN	<p>FINISH CODE: 125 ✓</p>																																			
	NSSR	A. CARRIERE-R 2014-12-17	STRESS/ENG																																				
	F.RIENDEAU 2015-05-20	F. RIENDEAU 2014-12-17	APVD																																				
<table border="1" style="width:100%; border-collapse: collapse;"> <tr> <td style="width:20%;"></td> <td style="width:20%; text-align:center;">B</td> <td style="width:20%; text-align:center;">A</td> <td style="width:20%; text-align:center;">REVISION</td> <td style="width:20%;"> <p>UNLESS OTHERWISE SPECIFIED DIMENSIONS ARE IN INCHES</p> <table border="1" style="width:100%; border-collapse: collapse;"> <tr> <td>LINEAR TOLERANCES</td> <td>ANGULAR TOLERANCES</td> <td>FORMED</td> </tr> <tr> <td>.XX = ±.03</td> <td>MACH. ± 2'</td> <td></td> </tr> <tr> <td>.XXX = ± .010</td> <td>± 0' 30'</td> <td></td> </tr> </table> <p>LES XXXX = LEARJET ENGR SPEC MPS XXX = CANADAIR MATERIALS AND PROCESSES SPECIFICATION MPS XXXX = BCCM MATERIALS AND PROCESSES SPECIFICATION S-XXX(X) = LEARJET ENGR STD S-XXXX = CANADAIR EXTRUSION NO.</p> <p>FINISH SPEC: ALL MACHINED SURFACES: 125 ✓</p> </td> </tr> <tr> <td></td> <td>A.CARRIERE-R. 2015-05-20</td> <td>F. RIENDEAU 2014-12-17</td> <td style="text-align:center;">DRAWN</td> <td rowspan="3"> <p>FINISH CODE: 125 ✓</p> </td> </tr> <tr> <td></td> <td>NSSR</td> <td>A. CARRIERE-R 2014-12-17</td> <td style="text-align:center;">STRESS/ENG</td> </tr> <tr> <td></td> <td>F.RIENDEAU 2015-05-20</td> <td>F. RIENDEAU 2014-12-17</td> <td style="text-align:center;">APVD</td> </tr> </table>					B	A	REVISION	<p>UNLESS OTHERWISE SPECIFIED DIMENSIONS ARE IN INCHES</p> <table border="1" style="width:100%; border-collapse: collapse;"> <tr> <td>LINEAR TOLERANCES</td> <td>ANGULAR TOLERANCES</td> <td>FORMED</td> </tr> <tr> <td>.XX = ±.03</td> <td>MACH. ± 2'</td> <td></td> </tr> <tr> <td>.XXX = ± .010</td> <td>± 0' 30'</td> <td></td> </tr> </table> <p>LES XXXX = LEARJET ENGR SPEC MPS XXX = CANADAIR MATERIALS AND PROCESSES SPECIFICATION MPS XXXX = BCCM MATERIALS AND PROCESSES SPECIFICATION S-XXX(X) = LEARJET ENGR STD S-XXXX = CANADAIR EXTRUSION NO.</p> <p>FINISH SPEC: ALL MACHINED SURFACES: 125 ✓</p>	LINEAR TOLERANCES	ANGULAR TOLERANCES	FORMED	.XX = ±.03	MACH. ± 2'		.XXX = ± .010	± 0' 30'			A.CARRIERE-R. 2015-05-20	F. RIENDEAU 2014-12-17	DRAWN	<p>FINISH CODE: 125 ✓</p>		NSSR	A. CARRIERE-R 2014-12-17	STRESS/ENG		F.RIENDEAU 2015-05-20	F. RIENDEAU 2014-12-17	APVD									
	B	A	REVISION	<p>UNLESS OTHERWISE SPECIFIED DIMENSIONS ARE IN INCHES</p> <table border="1" style="width:100%; border-collapse: collapse;"> <tr> <td>LINEAR TOLERANCES</td> <td>ANGULAR TOLERANCES</td> <td>FORMED</td> </tr> <tr> <td>.XX = ±.03</td> <td>MACH. ± 2'</td> <td></td> </tr> <tr> <td>.XXX = ± .010</td> <td>± 0' 30'</td> <td></td> </tr> </table> <p>LES XXXX = LEARJET ENGR SPEC MPS XXX = CANADAIR MATERIALS AND PROCESSES SPECIFICATION MPS XXXX = BCCM MATERIALS AND PROCESSES SPECIFICATION S-XXX(X) = LEARJET ENGR STD S-XXXX = CANADAIR EXTRUSION NO.</p> <p>FINISH SPEC: ALL MACHINED SURFACES: 125 ✓</p>	LINEAR TOLERANCES	ANGULAR TOLERANCES	FORMED	.XX = ±.03	MACH. ± 2'		.XXX = ± .010	± 0' 30'																											
LINEAR TOLERANCES	ANGULAR TOLERANCES	FORMED																																					
.XX = ±.03	MACH. ± 2'																																						
.XXX = ± .010	± 0' 30'																																						
	A.CARRIERE-R. 2015-05-20	F. RIENDEAU 2014-12-17	DRAWN	<p>FINISH CODE: 125 ✓</p>																																			
	NSSR	A. CARRIERE-R 2014-12-17	STRESS/ENG																																				
	F.RIENDEAU 2015-05-20	F. RIENDEAU 2014-12-17	APVD																																				
<table border="1" style="width:100%; border-collapse: collapse;"> <tr> <td style="width:20%;"></td> <td style="width:20%; text-align:center;">B</td> <td style="width:20%; text-align:center;">A</td> <td style="width:20%; text-align:center;">REVISION</td> <td style="width:20%;"> <p>UNLESS OTHERWISE SPECIFIED DIMENSIONS ARE IN INCHES</p> <table border="1" style="width:100%; border-collapse: collapse;"> <tr> <td>LINEAR TOLERANCES</td> <td>ANGULAR TOLERANCES</td> <td>FORMED</td> </tr> <tr> <td>.XX = ±.03</td> <td>MACH. ± 2'</td> <td></td> </tr> <tr> <td>.XXX = ± .010</td> <td>± 0' 30'</td> <td></td> </tr> </table> <p>LES XXXX = LEARJET ENGR SPEC MPS XXX = CANADAIR MATERIALS AND PROCESSES SPECIFICATION MPS XXXX = BCCM MATERIALS AND PROCESSES SPECIFICATION S-XXX(X) = LEARJET ENGR STD S-XXXX = CANADAIR EXTRUSION NO.</p> <p>FINISH SPEC: ALL MACHINED SURFACES: 125 ✓</p> </td> </tr> <tr> <td></td> <td>A.CARRIERE-R. 2015-05-20</td> <td>F. RIENDEAU 2014-12-17</td> <td style="text-align:center;">DRAWN</td> <td rowspan="3"> <p>FINISH CODE: 125 ✓</p> </td> </tr> <tr> <td></td> <td>NSSR</td> <td>A. CARRIERE-R 2014-12-17</td> <td style="text-align:center;">STRESS/ENG</td> </tr> <tr> <td></td> <td>F.RIENDEAU 2015-05-20</td> <td>F. RIENDEAU 2014-12-17</td> <td style="text-align:center;">APVD</td> </tr> </table>					B	A	REVISION	<p>UNLESS OTHERWISE SPECIFIED DIMENSIONS ARE IN INCHES</p> <table border="1" style="width:100%; border-collapse: collapse;"> <tr> <td>LINEAR TOLERANCES</td> <td>ANGULAR TOLERANCES</td> <td>FORMED</td> </tr> <tr> <td>.XX = ±.03</td> <td>MACH. ± 2'</td> <td></td> </tr> <tr> <td>.XXX = ± .010</td> <td>± 0' 30'</td> <td></td> </tr> </table> <p>LES XXXX = LEARJET ENGR SPEC MPS XXX = CANADAIR MATERIALS AND PROCESSES SPECIFICATION MPS XXXX = BCCM MATERIALS AND PROCESSES SPECIFICATION S-XXX(X) = LEARJET ENGR STD S-XXXX = CANADAIR EXTRUSION NO.</p> <p>FINISH SPEC: ALL MACHINED SURFACES: 125 ✓</p>	LINEAR TOLERANCES	ANGULAR TOLERANCES	FORMED	.XX = ±.03	MACH. ± 2'		.XXX = ± .010	± 0' 30'			A.CARRIERE-R. 2015-05-20	F. RIENDEAU 2014-12-17	DRAWN	<p>FINISH CODE: 125 ✓</p>		NSSR	A. CARRIERE-R 2014-12-17	STRESS/ENG		F.RIENDEAU 2015-05-20	F. RIENDEAU 2014-12-17	APVD									
	B	A	REVISION	<p>UNLESS OTHERWISE SPECIFIED DIMENSIONS ARE IN INCHES</p> <table border="1" style="width:100%; border-collapse: collapse;"> <tr> <td>LINEAR TOLERANCES</td> <td>ANGULAR TOLERANCES</td> <td>FORMED</td> </tr> <tr> <td>.XX = ±.03</td> <td>MACH. ± 2'</td> <td></td> </tr> <tr> <td>.XXX = ± .010</td> <td>± 0' 30'</td> <td></td> </tr> </table> <p>LES XXXX = LEARJET ENGR SPEC MPS XXX = CANADAIR MATERIALS AND PROCESSES SPECIFICATION MPS XXXX = BCCM MATERIALS AND PROCESSES SPECIFICATION S-XXX(X) = LEARJET ENGR STD S-XXXX = CANADAIR EXTRUSION NO.</p> <p>FINISH SPEC: ALL MACHINED SURFACES: 125 ✓</p>	LINEAR TOLERANCES	ANGULAR TOLERANCES	FORMED	.XX = ±.03	MACH. ± 2'		.XXX = ± .010	± 0' 30'																											
LINEAR TOLERANCES	ANGULAR TOLERANCES	FORMED																																					
.XX = ±.03	MACH. ± 2'																																						
.XXX = ± .010	± 0' 30'																																						
	A.CARRIERE-R. 2015-05-20	F. RIENDEAU 2014-12-17	DRAWN	<p>FINISH CODE: 125 ✓</p>																																			
	NSSR	A. CARRIERE-R 2014-12-17	STRESS/ENG																																				
	F.RIENDEAU 2015-05-20	F. RIENDEAU 2014-12-17	APVD																																				
<table border="1" style="width:100%; border-collapse: collapse;"> <tr> <td style="width:20%;"></td> <td style="width:20%; text-align:center;">B</td> <td style="width:20%; text-align:center;">A</td> <td style="width:20%; text-align:center;">REVISION</td> <td style="width:20%;"> <p>UNLESS OTHERWISE SPECIFIED DIMENSIONS ARE IN INCHES</p> <table border="1" style="width:100%; border-collapse: collapse;"> <tr> <td>LINEAR TOLERANCES</td> <td>ANGULAR TOLERANCES</td> <td>FORMED</td> </tr> <tr> <td>.XX = ±.03</td> <td>MACH. ± 2'</td> <td></td> </tr> <tr> <td>.XXX = ± .010</td> <td>± 0' 30'</td> <td></td> </tr> </table> <p>LES XXXX = LEARJET ENGR SPEC MPS XXX = CANADAIR MATERIALS AND PROCESSES SPECIFICATION MPS XXXX = BCCM MATERIALS AND PROCESSES SPECIFICATION S-XXX(X) = LEARJET ENGR STD S-XXXX = CANADAIR EXTRUSION NO.</p> <p>FINISH SPEC: ALL MACHINED SURFACES: 125 ✓</p> </td> </tr> <tr> <td></td> <td>A.CARRIERE-R. 2015-05-20</td> <td>F. RIENDEAU 2014-12-17</td> <td style="text-align:center;">DRAWN</td> <td rowspan="3"> <p>FINISH CODE: 125 ✓</p> </td> </tr> <tr> <td></td> <td>NSSR</td> <td>A. CARRIERE-R 2014-12-17</td> <td style="text-align:center;">STRESS/ENG</td> </tr> <tr> <td></td> <td>F.RIENDEAU 2015-05-20</td> <td>F. RIENDEAU 2014-12-17</td> <td style="text-align:center;">APVD</td> </tr> </table>					B	A	REVISION	<p>UNLESS OTHERWISE SPECIFIED DIMENSIONS ARE IN INCHES</p> <table border="1" style="width:100%; border-collapse: collapse;"> <tr> <td>LINEAR TOLERANCES</td> <td>ANGULAR TOLERANCES</td> <td>FORMED</td> </tr> <tr> <td>.XX = ±.03</td> <td>MACH. ± 2'</td> <td></td> </tr> <tr> <td>.XXX = ± .010</td> <td>± 0' 30'</td> <td></td> </tr> </table> <p>LES XXXX = LEARJET ENGR SPEC MPS XXX = CANADAIR MATERIALS AND PROCESSES SPECIFICATION MPS XXXX = BCCM MATERIALS AND PROCESSES SPECIFICATION S-XXX(X) = LEARJET ENGR STD S-XXXX = CANADAIR EXTRUSION NO.</p> <p>FINISH SPEC: ALL MACHINED SURFACES: 125 ✓</p>	LINEAR TOLERANCES	ANGULAR TOLERANCES	FORMED	.XX = ±.03	MACH. ± 2'		.XXX = ± .010	± 0' 30'			A.CARRIERE-R. 2015-05-20	F. RIENDEAU 2014-12-17	DRAWN	<p>FINISH CODE: 125 ✓</p>		NSSR	A. CARRIERE-R 2014-12-17	STRESS/ENG		F.RIENDEAU 2015-05-20	F. RIENDEAU 2014-12-17	APVD									
	B	A	REVISION	<p>UNLESS OTHERWISE SPECIFIED DIMENSIONS ARE IN INCHES</p> <table border="1" style="width:100%; border-collapse: collapse;"> <tr> <td>LINEAR TOLERANCES</td> <td>ANGULAR TOLERANCES</td> <td>FORMED</td> </tr> <tr> <td>.XX = ±.03</td> <td>MACH. ± 2'</td> <td></td> </tr> <tr> <td>.XXX = ± .010</td> <td>± 0' 30'</td> <td></td> </tr> </table> <p>LES XXXX = LEARJET ENGR SPEC MPS XXX = CANADAIR MATERIALS AND PROCESSES SPECIFICATION MPS XXXX = BCCM MATERIALS AND PROCESSES SPECIFICATION S-XXX(X) = LEARJET ENGR STD S-XXXX = CANADAIR EXTRUSION NO.</p> <p>FINISH SPEC: ALL MACHINED SURFACES: 125 ✓</p>	LINEAR TOLERANCES	ANGULAR TOLERANCES	FORMED	.XX = ±.03	MACH. ± 2'		.XXX = ± .010	± 0' 30'																											
LINEAR TOLERANCES	ANGULAR TOLERANCES	FORMED																																					
.XX = ±.03	MACH. ± 2'																																						
.XXX = ± .010	± 0' 30'																																						
	A.CARRIERE-R. 2015-05-20	F. RIENDEAU 2014-12-17	DRAWN	<p>FINISH CODE: 125 ✓</p>																																			
	NSSR	A. CARRIERE-R 2014-12-17	STRESS/ENG																																				
	F.RIENDEAU 2015-05-20	F. RIENDEAU 2014-12-17	APVD																																				
<table border="1" style="width:100%; border-collapse: collapse;"> <tr> <td style="width:20%;"></td> <td style="width:20%; text-align:center;">B</td> <td style="width:20%; text-align:center;">A</td> <td style="width:20%; text-align:center;">REVISION</td> <td style="width:20%;"> <p>UNLESS OTHERWISE SPECIFIED DIMENSIONS ARE IN INCHES</p> <table border="1" style="width:100%; border-collapse: collapse;"> <tr> <td>LINEAR TOLERANCES</td> <td>ANGULAR TOLERANCES</td> <td>FORMED</td> </tr> <tr> <td>.XX = ±.03</td> <td>MACH. ± 2'</td> <td></td> </tr> <tr> <td>.XXX = ± .010</td> <td>± 0' 30'</td> <td></td> </tr> </table> <p>LES XXXX = LEARJET ENGR SPEC MPS XXX = CANADAIR MATERIALS AND PROCESSES SPECIFICATION MPS XXXX = BCCM MATERIALS AND PROCESSES SPECIFICATION S-XXX(X) = LEARJET ENGR STD S-XXXX = CANADAIR EXTRUSION NO.</p> <p>FINISH SPEC: ALL MACHINED SURFACES: 125 ✓</p> </td> </tr> <tr> <td></td> <td>A.CARRIERE-R. 2015-05-20</td> <td>F. RIENDEAU 2014-12-17</td> <td style="text-align:center;">DRAWN</td> <td rowspan="3"> <p>FINISH CODE: 125 ✓</p> </td> </tr> <tr> <td></td> <td>NSSR</td> <td>A. CARRIERE-R 2014-12-17</td> <td style="text-align:center;">STRESS/ENG</td> </tr> <tr> <td></td> <td>F.RIENDEAU 2015-05-20</td> <td>F. RIENDEAU 2014-12-17</td> <td style="text-align:center;">APVD</td> </tr> </table>					B	A	REVISION	<p>UNLESS OTHERWISE SPECIFIED DIMENSIONS ARE IN INCHES</p> <table border="1" style="width:100%; border-collapse: collapse;"> <tr> <td>LINEAR TOLERANCES</td> <td>ANGULAR TOLERANCES</td> <td>FORMED</td> </tr> <tr> <td>.XX = ±.03</td> <td>MACH. ± 2'</td> <td></td> </tr> <tr> <td>.XXX = ± .010</td> <td>± 0' 30'</td> <td></td> </tr> </table> <p>LES XXXX = LEARJET ENGR SPEC MPS XXX = CANADAIR MATERIALS AND PROCESSES SPECIFICATION MPS XXXX = BCCM MATERIALS AND PROCESSES SPECIFICATION S-XXX(X) = LEARJET ENGR STD S-XXXX = CANADAIR EXTRUSION NO.</p> <p>FINISH SPEC: ALL MACHINED SURFACES: 125 ✓</p>	LINEAR TOLERANCES	ANGULAR TOLERANCES	FORMED	.XX = ±.03	MACH. ± 2'		.XXX = ± .010	± 0' 30'			A.CARRIERE-R. 2015-05-20	F. RIENDEAU 2014-12-17	DRAWN	<p>FINISH CODE: 125 ✓</p>		NSSR	A. CARRIERE-R 2014-12-17	STRESS/ENG		F.RIENDEAU 2015-05-20	F. RIENDEAU 2014-12-17	APVD									
	B	A	REVISION	<p>UNLESS OTHERWISE SPECIFIED DIMENSIONS ARE IN INCHES</p> <table border="1" style="width:100%; border-collapse: collapse;"> <tr> <td>LINEAR TOLERANCES</td> <td>ANGULAR TOLERANCES</td> <td>FORMED</td> </tr> <tr> <td>.XX = ±.03</td> <td>MACH. ± 2'</td> <td></td> </tr> <tr> <td>.XXX = ± .010</td> <td>± 0' 30'</td> <td></td> </tr> </table> <p>LES XXXX = LEARJET ENGR SPEC MPS XXX = CANADAIR MATERIALS AND PROCESSES SPECIFICATION MPS XXXX = BCCM MATERIALS AND PROCESSES SPECIFICATION S-XXX(X) = LEARJET ENGR STD S-XXXX = CANADAIR EXTRUSION NO.</p> <p>FINISH SPEC: ALL MACHINED SURFACES: 125 ✓</p>	LINEAR TOLERANCES	ANGULAR TOLERANCES	FORMED	.XX = ±.03	MACH. ± 2'		.XXX = ± .010	± 0' 30'																											
LINEAR TOLERANCES	ANGULAR TOLERANCES	FORMED																																					
.XX = ±.03	MACH. ± 2'																																						
.XXX = ± .010	± 0' 30'																																						
	A.CARRIERE-R. 2015-05-20	F. RIENDEAU 2014-12-17	DRAWN	<p>FINISH CODE: 125 ✓</p>																																			
	NSSR	A. CARRIERE-R 2014-12-17	STRESS/ENG																																				
	F.RIENDEAU 2015-05-20	F. RIENDEAU 2014-12-17	APVD																																				
<table border="1" style="width:100%; border-collapse: collapse;"> <tr> <td style="width:20%;"></td> <td style="width:20%; text-align:center;">B</td> <td style="width:20%; text-align:center;">A</td> <td style="width:20%; text-align:center;">REVISION</td> <td style="width:20%;"> <p>UNLESS OTHERWISE SPECIFIED DIMENSIONS ARE IN INCHES</p> <table border="1" style="width:100%; border-collapse: collapse;"> <tr> <td>LINEAR TOLERANCES</td> <td>ANGULAR TOLERANCES</td> <td>FORMED</td> </tr> <tr> <td>.XX = ±.03</td> <td>MACH. ± 2'</td> <td></td> </tr> <tr> <td>.XXX = ± .010</td> <td>± 0' 30'</td> <td></td> </tr> </table> <p>LES XXXX = LEARJET ENGR SPEC MPS XXX = CANADAIR MATERIALS AND PROCESSES SPECIFICATION MPS XXXX = BCCM MATERIALS AND PROCESSES SPECIFICATION S-XXX(X) = LEARJET ENGR STD S-XXXX = CANADAIR EXTRUSION NO.</p> <p>FINISH SPEC: ALL MACHINED SURFACES: 125 ✓</p> </td> </tr> <tr> <td></td> <td>A.CARRIERE-R. 2015-05-20</td> <td>F. RIENDEAU 2014-12-17</td> <td style="text-align:center;">DRAWN</td> <td rowspan="3"> <p>FINISH CODE: 125 ✓</p> </td> </tr> <tr> <td></td> <td>NSSR</td> <td>A. CARRIERE-R 2014-12-17</td> <td style="text-align:center;">STRESS/ENG</td> </tr> <tr> <td></td> <td>F.RIENDEAU 2015-05-20</td> <td>F. RIENDEAU 2014-12-17</td> <td style="text-align:center;">APVD</td> </tr> </table>					B	A	REVISION	<p>UNLESS OTHERWISE SPECIFIED DIMENSIONS ARE IN INCHES</p> <table border="1" style="width:100%; border-collapse: collapse;"> <tr> <td>LINEAR TOLERANCES</td> <td>ANGULAR TOLERANCES</td> <td>FORMED</td> </tr> <tr> <td>.XX = ±.03</td> <td>MACH. ± 2'</td> <td></td> </tr> <tr> <td>.XXX = ± .010</td> <td>± 0' 30'</td> <td></td> </tr> </table> <p>LES XXXX = LEARJET ENGR SPEC MPS XXX = CANADAIR MATERIALS AND PROCESSES SPECIFICATION MPS XXXX = BCCM MATERIALS AND PROCESSES SPECIFICATION S-XXX(X) = LEARJET ENGR STD S-XXXX = CANADAIR EXTRUSION NO.</p> <p>FINISH SPEC: ALL MACHINED SURFACES: 125 ✓</p>	LINEAR TOLERANCES	ANGULAR TOLERANCES	FORMED	.XX = ±.03	MACH. ± 2'		.XXX = ± .010	± 0' 30'			A.CARRIERE-R. 2015-05-20	F. RIENDEAU 2014-12-17	DRAWN	<p>FINISH CODE: 125 ✓</p>		NSSR	A. CARRIERE-R 2014-12-17	STRESS/ENG		F.RIENDEAU 2015-05-20	F. RIENDEAU 2014-12-17	APVD									
	B	A	REVISION	<p>UNLESS OTHERWISE SPECIFIED DIMENSIONS ARE IN INCHES</p> <table border="1" style="width:100%; border-collapse: collapse;"> <tr> <td>LINEAR TOLERANCES</td> <td>ANGULAR TOLERANCES</td> <td>FORMED</td> </tr> <tr> <td>.XX = ±.03</td> <td>MACH. ± 2'</td> <td></td> </tr> <tr> <td>.XXX = ± .010</td> <td>± 0' 30'</td> <td></td> </tr> </table> <p>LES XXXX = LEARJET ENGR SPEC MPS XXX = CANADAIR MATERIALS AND PROCESSES SPECIFICATION MPS XXXX = BCCM MATERIALS AND PROCESSES SPECIFICATION S-XXX(X) = LEARJET ENGR STD S-XXXX = CANADAIR EXTRUSION NO.</p> <p>FINISH SPEC: ALL MACHINED SURFACES: 125 ✓</p>	LINEAR TOLERANCES	ANGULAR TOLERANCES	FORMED	.XX = ±.03	MACH. ± 2'		.XXX = ± .010	± 0' 30'																											
LINEAR TOLERANCES	ANGULAR TOLERANCES	FORMED																																					
.XX = ±.03	MACH. ± 2'																																						
.XXX = ± .010	± 0' 30'																																						
	A.CARRIERE-R. 2015-05-20	F. RIENDEAU 2014-12-17	DRAWN	<p>FINISH CODE: 125 ✓</p>																																			
	NSSR	A. CARRIERE-R 2014-12-17	STRESS/ENG																																				
	F.RIENDEAU 2015-05-20	F. RIENDEAU 2014-12-17	APVD																																				
<table border="1" style="width:100%; border-collapse: collapse;"> <tr> <td style="width:20%;"></td> <td style="width:20%; text-align:center;">B</td> <td style="width:20%; text-align:center;">A</td> <td style="width:20%; text-align:center;">REVISION</td> <td style="width:20%;"> <p>UNLESS OTHERWISE SPECIFIED DIMENSIONS ARE IN INCHES</p> <table border="1" style="width:100%; border-collapse: collapse;"> <tr> <td>LINEAR TOLERANCES</td> <td>ANGULAR TOLERANCES</td> <td>FORMED</td> </tr> <tr> <td>.XX = ±.03</td> <td>MACH. ± 2'</td> <td></td> </tr> <tr> <td>.XXX = ± .010</td> <td>± 0' 30'</td> <td></td> </tr> </table> <p>LES XXXX = LEARJET ENGR SPEC MPS XXX = CANADAIR MATERIALS AND PROCESSES SPECIFICATION MPS XXXX = BCCM MATERIALS AND PROCESSES SPECIFICATION S-XXX(X) = LEARJET ENGR STD S-XXXX = CANADAIR EXTRUSION NO.</p> <p>FINISH SPEC: ALL MACHINED SURFACES: 125 ✓</p> </td> </tr> <tr> <td></td> <td>A.CARRIERE-R. 2015-05-20</td> <td>F. RIENDEAU 2014-12-17</td> <td style="text-align:center;">DRAWN</td> <td rowspan="3"> <p>FINISH CODE: 125 ✓</p> </td> </tr> <tr> <td></td> <td>NSSR</td> <td>A. CARRIERE-R 2014-12-17</td> <td style="text-align:center;">STRESS/ENG</td> </tr> <tr> <td></td> <td>F.RIENDEAU 2015-05-20</td> <td>F. RIENDEAU 2014-12-17</td> <td style="text-align:center;">APVD</td> </tr> </table>					B	A	REVISION	<p>UNLESS OTHERWISE SPECIFIED DIMENSIONS ARE IN INCHES</p> <table border="1" style="width:100%; border-collapse: collapse;"> <tr> <td>LINEAR TOLERANCES</td> <td>ANGULAR TOLERANCES</td> <td>FORMED</td> </tr> <tr> <td>.XX = ±.03</td> <td>MACH. ± 2'</td> <td></td> </tr> <tr> <td>.XXX = ± .010</td> <td>± 0' 30'</td> <td></td> </tr> </table> <p>LES XXXX = LEARJET ENGR SPEC MPS XXX = CANADAIR MATERIALS AND PROCESSES SPECIFICATION MPS XXXX = BCCM MATERIALS AND PROCESSES SPECIFICATION S-XXX(X) = LEARJET ENGR STD S-XXXX = CANADAIR EXTRUSION NO.</p> <p>FINISH SPEC: ALL MACHINED SURFACES: 125 ✓</p>	LINEAR TOLERANCES	ANGULAR TOLERANCES	FORMED	.XX = ±.03	MACH. ± 2'		.XXX = ± .010	± 0' 30'			A.CARRIERE-R. 2015-05-20	F. RIENDEAU 2014-12-17	DRAWN	<p>FINISH CODE: 125 ✓</p>		NSSR	A. CARRIERE-R 2014-12-17	STRESS/ENG		F.RIENDEAU 2015-05-20	F. RIENDEAU 2014-12-17	APVD									
	B	A	REVISION	<p>UNLESS OTHERWISE SPECIFIED DIMENSIONS ARE IN INCHES</p> <table border="1" style="width:100%; border-collapse: collapse;"> <tr> <td>LINEAR TOLERANCES</td> <td>ANGULAR TOLERANCES</td> <td>FORMED</td> </tr> <tr> <td>.XX = ±.03</td> <td>MACH. ± 2'</td> <td></td> </tr> <tr> <td>.XXX = ± .010</td> <td>± 0' 30'</td> <td></td> </tr> </table> <p>LES XXXX = LEARJET ENGR SPEC MPS XXX = CANADAIR MATERIALS AND PROCESSES SPECIFICATION MPS XXXX = BCCM MATERIALS AND PROCESSES SPECIFICATION S-XXX(X) = LEARJET ENGR STD S-XXXX = CANADAIR EXTRUSION NO.</p> <p>FINISH SPEC: ALL MACHINED SURFACES: 125 ✓</p>	LINEAR TOLERANCES	ANGULAR TOLERANCES	FORMED	.XX = ±.03	MACH. ± 2'		.XXX = ± .010	± 0' 30'																											
LINEAR TOLERANCES	ANGULAR TOLERANCES	FORMED																																					
.XX = ±.03	MACH. ± 2'																																						
.XXX = ± .010	± 0' 30'																																						
	A.CARRIERE-R. 2015-05-20	F. RIENDEAU 2014-12-17	DRAWN	<p>FINISH CODE: 125 ✓</p>																																			
	NSSR	A. CARRIERE-R 2014-12-17	STRESS/ENG																																				
	F.RIENDEAU 2015-05-20	F. RIENDEAU 2014-12-17	APVD																																				
<table border="1" style="width:100%; border-collapse: collapse;"> <tr> <td style="width:20%;"></td> <td style="width:20%; text-align:center;">B</td> <td style="width:20%; text-align:center;">A</td> <td style="width:20%; text-align:center;">REVISION</td> <td style="width:20%;"> <p>UNLESS OTHERWISE SPECIFIED DIMENSIONS ARE IN INCHES</p> <table border="1" style="width:100%; border-collapse: collapse;"> <tr> <td>LINEAR TOLERANCES</td> <td>ANGULAR TOLERANCES</td> <td>FORMED</td> </tr> <tr> <td>.XX = ±.03</td> <td>MACH. ± 2'</td> <td></td> </tr> <tr> <td>.XXX = ± .010</td> <td>± 0' 30'</td> <td></td> </tr> </table> <p>LES XXXX = LEARJET ENGR SPEC MPS XXX = CANADAIR MATERIALS AND PROCESSES SPECIFICATION MPS XXXX = BCCM MATERIALS AND PROCESSES SPECIFICATION S-XXX(X) = LEARJET ENGR STD S-XXXX = CANADAIR EXTRUSION NO.</p> <p>FINISH SPEC: ALL MACHINED SURFACES: 125 ✓</p> </td> </tr> <tr> <td></td> <td>A.CARRIERE-R. 2015-05-20</td> <td>F. RIENDEAU 2014-12-17</td> <td style="text-align:center;">DRAWN</td> <td rowspan="3"> <p>FINISH CODE: 125 ✓</p> </td> </tr> <tr> <td></td> <td>NSSR</td> <td>A. CARRIERE-R 2014-12-17</td> <td style="text-align:center;">STRESS/ENG</td> </tr> <tr> <td></td> <td>F.RIENDEAU 2015-05-20</td> <td>F. RIENDEAU 2014-12-17</td> <td style="text-align:center;">APVD</td> </tr> </table>					B	A	REVISION	<p>UNLESS OTHERWISE SPECIFIED DIMENSIONS ARE IN INCHES</p> <table border="1" style="width:100%; border-collapse: collapse;"> <tr> <td>LINEAR TOLERANCES</td> <td>ANGULAR TOLERANCES</td> <td>FORMED</td> </tr> <tr> <td>.XX = ±.03</td> <td>MACH. ± 2'</td> <td></td> </tr> <tr> <td>.XXX = ± .010</td> <td>± 0' 30'</td> <td></td> </tr> </table> <p>LES XXXX = LEARJET ENGR SPEC MPS XXX = CANADAIR MATERIALS AND PROCESSES SPECIFICATION MPS XXXX = BCCM MATERIALS AND PROCESSES SPECIFICATION S-XXX(X) = LEARJET ENGR STD S-XXXX = CANADAIR EXTRUSION NO.</p> <p>FINISH SPEC: ALL MACHINED SURFACES: 125 ✓</p>	LINEAR TOLERANCES	ANGULAR TOLERANCES	FORMED	.XX = ±.03	MACH. ± 2'		.XXX = ± .010	± 0' 30'			A.CARRIERE-R. 2015-05-20	F. RIENDEAU 2014-12-17	DRAWN	<p>FINISH CODE: 125 ✓</p>		NSSR	A. CARRIERE-R 2014-12-17	STRESS/ENG		F.RIENDEAU 2015-05-20	F. RIENDEAU 2014-12-17	APVD									
	B	A	REVISION	<p>UNLESS OTHERWISE SPECIFIED DIMENSIONS ARE IN INCHES</p> <table border="1" style="width:100%; border-collapse: collapse;"> <tr> <td>LINEAR TOLERANCES</td> <td>ANGULAR TOLERANCES</td> <td>FORMED</td> </tr> <tr> <td>.XX = ±.03</td> <td>MACH. ± 2'</td> <td></td> </tr> <tr> <td>.XXX = ± .010</td> <td>± 0' 30'</td> <td></td> </tr> </table> <p>LES XXXX = LEARJET ENGR SPEC MPS XXX = CANADAIR MATERIALS AND PROCESSES SPECIFICATION MPS XXXX = BCCM MATERIALS AND PROCESSES SPECIFICATION S-XXX(X) = LEARJET ENGR STD S-XXXX = CANADAIR EXTRUSION NO.</p> <p>FINISH SPEC: ALL MACHINED SURFACES: 125 ✓</p>	LINEAR TOLERANCES	ANGULAR TOLERANCES	FORMED	.XX = ±.03	MACH. ± 2'		.XXX = ± .010	± 0' 30'																											
LINEAR TOLERANCES	ANGULAR TOLERANCES	FORMED																																					
.XX = ±.03	MACH. ± 2'																																						
.XXX = ± .010	± 0' 30'																																						
	A.CARRIERE-R. 2015-05-20	F. RIENDEAU 2014-12-17	DRAWN	<p>FINISH CODE: 125 ✓</p>																																			
	NSSR	A. CARRIERE-R 2014-12-17	STRESS/ENG																																				
	F.RIENDEAU 2015-05-20	F. RIENDEAU 2014-12-17	APVD																																				
<table border="1" style="width:100%; border-collapse: collapse;"> <tr> <td style="width:20%;"></td> <td style="width:20%; text-align:center;">B</td> <td style="width:20%; text-align:center;">A</td> <td style="width:20%; text-align:center;">REVISION</td> <td style="width:20%;"> <p>UNLESS OTHERWISE SPECIFIED DIMENSIONS ARE IN INCHES</p> <table border="1" style="width:100%; border-collapse: collapse;"> <tr> <td>LINEAR TOLERANCES</td> <td>ANGULAR TOLERANCES</td> <td>FORMED</td> </tr> <tr> <td>.XX = ±.03</td> <td>MACH. ± 2'</td> <td></td> </tr> <tr> <td>.XXX = ± .010</td> <td>± 0' 30'</td> <td></td> </tr> </table> <p>LES XXXX = LEARJET ENGR SPEC MPS XXX = CANADAIR MATERIALS AND PROCESSES SPECIFICATION MPS XXXX = BCCM MATERIALS AND PROCESSES SPECIFICATION S-XXX(X) = LEARJET ENGR STD S-XXXX = CANADAIR EXTRUSION NO.</p> <p>FINISH SPEC: ALL MACHINED SURFACES: 125 ✓</p> </td> </tr> <tr> <td></td> <td>A.CARRIERE-R. 2015-05-20</td> <td>F. RIENDEAU 2014-12-17</td> <td style="text-align:center;">DRAWN</td> <td rowspan="3"> <p>FINISH CODE: 125 ✓</p> </td> </tr> <tr> <td></td> <td>NSSR</td> <td>A. CARRIERE-R 2014-12-17</td> <td style="text-align:center;">STRESS/ENG</td> </tr> <tr> <td></td> <td>F.RIENDEAU 2015-05-20</td> <td>F. RIENDEAU 2014-12-17</td> <td style="text-align:center;">APVD</td> </tr> </table>					B	A	REVISION	<p>UNLESS OTHERWISE SPECIFIED DIMENSIONS ARE IN INCHES</p> <table border="1" style="width:100%; border-collapse: collapse;"> <tr> <td>LINEAR TOLERANCES</td> <td>ANGULAR TOLERANCES</td> <td>FORMED</td> </tr> <tr> <td>.XX = ±.03</td> <td>MACH. ± 2'</td> <td></td> </tr> <tr> <td>.XXX = ± .010</td> <td>± 0' 30'</td> <td></td> </tr> </table> <p>LES XXXX = LEARJET ENGR SPEC MPS XXX = CANADAIR MATERIALS AND PROCESSES SPECIFICATION MPS XXXX = BCCM MATERIALS AND PROCESSES SPECIFICATION S-XXX(X) = LEARJET ENGR STD S-XXXX = CANADAIR EXTRUSION NO.</p> <p>FINISH SPEC: ALL MACHINED SURFACES: 125 ✓</p>	LINEAR TOLERANCES	ANGULAR TOLERANCES	FORMED	.XX = ±.03	MACH. ± 2'		.XXX = ± .010	± 0' 30'			A.CARRIERE-R. 2015-05-20	F. RIENDEAU 2014-12-17	DRAWN	<p>FINISH CODE: 125 ✓</p>		NSSR	A. CARRIERE-R 2014-12-17	STRESS/ENG		F.RIENDEAU 2015-05-20	F. RIENDEAU 2014-12-17	APVD									
	B	A	REVISION	<p>UNLESS OTHERWISE SPECIFIED DIMENSIONS ARE IN INCHES</p> <table border="1" style="width:100%; border-collapse: collapse;"> <tr> <td>LINEAR TOLERANCES</td> <td>ANGULAR TOLERANCES</td> <td>FORMED</td> </tr> <tr> <td>.XX = ±.03</td> <td>MACH. ± 2'</td> <td></td> </tr> <tr> <td>.XXX = ± .010</td> <td>± 0' 30'</td> <td></td> </tr> </table> <p>LES XXXX = LEARJET ENGR SPEC MPS XXX = CANADAIR MATERIALS AND PROCESSES SPECIFICATION MPS XXXX = BCCM MATERIALS AND PROCESSES SPECIFICATION S-XXX(X) = LEARJET ENGR STD S-XXXX = CANADAIR EXTRUSION NO.</p> <p>FINISH SPEC: ALL MACHINED SURFACES: 125 ✓</p>	LINEAR TOLERANCES	ANGULAR TOLERANCES	FORMED	.XX = ±.03	MACH. ± 2'		.XXX = ± .010	± 0' 30'																											
LINEAR TOLERANCES	ANGULAR TOLERANCES	FORMED																																					
.XX = ±.03	MACH. ± 2'																																						
.XXX = ± .010	± 0' 30'																																						
	A.CARRIERE-R. 2015-05-20	F. RIENDEAU 2014-12-17	DRAWN	<p>FINISH CODE: 125 ✓</p>																																			
	NSSR	A. CARRIERE-R 2014-12-17	STRESS/ENG																																				
	F.RIENDEAU 2015-05-20	F. RIENDEAU 2014-12-17	APVD																																				
<table border="1" style="width:100%; border-collapse: collapse;"> <tr> <td style="width:20%;"></td> <td style="width:20%; text-align:center;">B</td> <td style="width:20%; text-align:center;">A</td> <td style="width:20%; text-align:center;">REVISION</td> <td style="width:20%;"> <p>UNLESS OTHERWISE SPECIFIED DIMENSIONS ARE IN INCHES</p> <table border="1" style="width:100%; border-collapse: collapse;"> <tr> <td>LINEAR TOLERANCES</td> <td>ANGULAR TOLERANCES</td> <td>FORMED</td> </tr> <tr> <td>.XX = ±.03</td> <td>MACH. ± 2'</td> <td></td> </tr> <tr> <td>.XXX = ± .010</td> <td>± 0' 30'</td> <td></td> </tr> </table> <p>LES XXXX = LEARJET ENGR SPEC MPS XXX = CANADAIR MATERIALS AND PROCESSES SPECIFICATION MPS XXXX = BCCM MATERIALS AND PROCESSES SPECIFICATION S-XXX(X) = LEARJET ENGR STD S-XXXX = CANADAIR EXTRUSION NO.</p> <p>FINISH SPEC: ALL MACHINED SURFACES: 125 ✓</p> </td> </tr> <tr> <td></td> <td>A.CARRIERE-R. 2015-05-20</td> <td>F. RIENDEAU 2014-12-17</td> <td style="text-align:center;">DRAWN</td> <td rowspan="3"> <p>FINISH CODE: 125 ✓</p> </td> </tr> <tr> <td></td> <td>NSSR</td> <td>A. CARRIERE-R 2014-12-17</td> <td style="text-align:center;">STRESS/ENG</td> </tr> <tr> <td></td> <td>F.RIENDEAU 2015-05-20</td> <td>F. RIENDEAU 2014-12-17</td> <td style="text-align:center;">APVD</td> </tr> </table>					B	A	REVISION	<p>UNLESS OTHERWISE SPECIFIED DIMENSIONS ARE IN INCHES</p> <table border="1" style="width:100%; border-collapse: collapse;"> <tr> <td>LINEAR TOLERANCES</td> <td>ANGULAR TOLERANCES</td> <td>FORMED</td> </tr> <tr> <td>.XX = ±.03</td> <td>MACH. ± 2'</td> <td></td> </tr> <tr> <td>.XXX = ± .010</td> <td>± 0' 30'</td> <td></td> </tr> </table> <p>LES XXXX = LEARJET ENGR SPEC MPS XXX = CANADAIR MATERIALS AND PROCESSES SPECIFICATION MPS XXXX = BCCM MATERIALS AND PROCESSES SPECIFICATION S-XXX(X) = LEARJET ENGR STD S-XXXX = CANADAIR EXTRUSION NO.</p> <p>FINISH SPEC: ALL MACHINED SURFACES: 125 ✓</p>	LINEAR TOLERANCES	ANGULAR TOLERANCES	FORMED	.XX = ±.03	MACH. ± 2'		.XXX = ± .010	± 0' 30'			A.CARRIERE-R. 2015-05-20	F. RIENDEAU 2014-12-17	DRAWN	<p>FINISH CODE: 125 ✓</p>		NSSR	A. CARRIERE-R 2014-12-17	STRESS/ENG		F.RIENDEAU 2015-05-20	F. RIENDEAU 2014-12-17	APVD									
	B	A	REVISION	<p>UNLESS OTHERWISE SPECIFIED DIMENSIONS ARE IN INCHES</p> <table border="1" style="width:100%; border-collapse: collapse;"> <tr> <td>LINEAR TOLERANCES</td> <td>ANGULAR TOLERANCES</td> <td>FORMED</td> </tr> <tr> <td>.XX = ±.03</td> <td>MACH. ± 2'</td> <td></td> </tr> <tr> <td>.XXX = ± .010</td> <td>± 0' 30'</td> <td></td> </tr> </table> <p>LES XXXX = LEARJET ENGR SPEC MPS XXX = CANADAIR MATERIALS AND PROCESSES SPECIFICATION MPS XXXX = BCCM MATERIALS AND PROCESSES SPECIFICATION S-XXX(X) = LEARJET ENGR STD S-XXXX = CANADAIR EXTRUSION NO.</p> <p>FINISH SPEC: ALL MACHINED SURFACES: 125 ✓</p>	LINEAR TOLERANCES	ANGULAR TOLERANCES	FORMED	.XX = ±.03	MACH. ± 2'		.XXX = ± .010	± 0' 30'																											
LINEAR TOLERANCES	ANGULAR TOLERANCES	FORMED																																					
.XX = ±.03	MACH. ± 2'																																						
.XXX = ± .010	± 0' 30'																																						
	A.CARRIERE-R. 2015-05-20	F. RIENDEAU 2014-12-17	DRAWN	<p>FINISH CODE: 125 ✓</p>																																			
	NSSR	A. CARRIERE-R 2014-12-17	STRESS/ENG																																				
	F.RIENDEAU 2015-05-20	F. RIENDEAU 2014-12-17	APVD																																				
<table border="1" style="width:100%; border-collapse: collapse;"> <tr> <td style="width:20%;"></td> <td style="width:20%; text-align:center;">B</td> <td style="width:20%; text-align:center;">A</td> <td style="width:20%; text-align:center;">REVISION</td> <td style="width:20%;"> <p>UNLESS OTHERWISE SPECIFIED DIMENSIONS ARE IN INCHES</p> <table border="1" style="width:100%; border-collapse: collapse;"> <tr> <td>LINEAR TOLERANCES</td> <td>ANGULAR TOLERANCES</td> <td>FORMED</td> </tr> <tr> <td>.XX = ±.03</td> <td>MACH. ± 2'</td> <td></td> </tr> <tr> <td>.XXX = ± .010</td> <td>± 0' 30'</td> <td></td> </tr> </table> <p>LES XXXX = LEARJET ENGR SPEC MPS XXX = CANADAIR MATERIALS AND PROCESSES SPECIFICATION MPS XXXX = BCCM MATERIALS AND PROCESSES SPECIFICATION S-XXX(X) = LEARJET ENGR STD S-XXXX = CANADAIR EXTRUSION NO.</p> <p>FINISH SPEC: ALL MACHINED SURFACES: 125 ✓</p> </td> </tr> <tr> <td></td> <td>A.CARRIERE-R. 2015-05-20</td> <td>F. RIENDEAU 2014-12-17</td> <td style="text-align:center;">DRAWN</td> <td rowspan="3"> <p>FINISH CODE: 125 ✓</p> </td> </tr> <tr> <td></td> <td>NSSR</td> <td>A. CARRIERE-R 2014-12-17</td> <td style="text-align:center;">STRESS/ENG</td> </tr> <tr> <td></td> <td>F.RIENDEAU 2015-05-20</td> <td>F. RIENDEAU 2014-12-17</td> <td style="text-align:center;">APVD</td> </tr> </table>					B	A	REVISION	<p>UNLESS OTHERWISE SPECIFIED DIMENSIONS ARE IN INCHES</p> <table border="1" style="width:100%; border-collapse: collapse;"> <tr> <td>LINEAR TOLERANCES</td> <td>ANGULAR TOLERANCES</td> <td>FORMED</td> </tr> <tr> <td>.XX = ±.03</td> <td>MACH. ± 2'</td> <td></td> </tr> <tr> <td>.XXX = ± .010</td> <td>± 0' 30'</td> <td></td> </tr> </table> <p>LES XXXX = LEARJET ENGR SPEC MPS XXX = CANADAIR MATERIALS AND PROCESSES SPECIFICATION MPS XXXX = BCCM MATERIALS AND PROCESSES SPECIFICATION S-XXX(X) = LEARJET ENGR STD S-XXXX = CANADAIR EXTRUSION NO.</p> <p>FINISH SPEC: ALL MACHINED SURFACES: 125 ✓</p>	LINEAR TOLERANCES	ANGULAR TOLERANCES	FORMED	.XX = ±.03	MACH. ± 2'		.XXX = ± .010	± 0' 30'			A.CARRIERE-R. 2015-05-20	F. RIENDEAU 2014-12-17	DRAWN	<p>FINISH CODE: 125 ✓</p>		NSSR	A. CARRIERE-R 2014-12-17	STRESS/ENG		F.RIENDEAU 2015-05-20	F. RIENDEAU 2014-12-17	APVD									
	B	A	REVISION	<p>UNLESS OTHERWISE SPECIFIED DIMENSIONS ARE IN INCHES</p> <table border="1" style="width:100%; border-collapse: collapse;"> <tr> <td>LINEAR TOLERANCES</td> <td>ANGULAR TOLERANCES</td> <td>FORMED</td> </tr> <tr> <td>.XX = ±.03</td> <td>MACH. ± 2'</td> <td></td> </tr> <tr> <td>.XXX = ± .010</td> <td>± 0' 30'</td> <td></td> </tr> </table> <p>LES XXXX = LEARJET ENGR SPEC MPS XXX = CANADAIR MATERIALS AND PROCESSES SPECIFICATION MPS XXXX = BCCM MATERIALS AND PROCESSES SPECIFICATION S-XXX(X) = LEARJET ENGR STD S-XXXX = CANADAIR EXTRUSION NO.</p> <p>FINISH SPEC: ALL MACHINED SURFACES: 125 ✓</p>	LINEAR TOLERANCES	ANGULAR TOLERANCES	FORMED	.XX = ±.03	MACH. ± 2'		.XXX = ± .010	± 0' 30'																											
LINEAR TOLERANCES	ANGULAR TOLERANCES	FORMED																																					
.XX = ±.03	MACH. ± 2'																																						
.XXX = ± .010	± 0' 30'																																						
	A.CARRIERE-R. 2015-05-20	F. RIENDEAU 2014-12-17	DRAWN	<p>FINISH CODE: 125 ✓</p>																																			
	NSSR	A. CARRIERE-R 2014-12-17	STRESS/ENG																																				
	F.RIENDEAU 2015-05-20	F. RIENDEAU 2014-12-17	APVD																																				
<table border="1" style="width:100%; border-collapse: collapse;"> <tr> <td style="width:20%;"></td> <td style="width:20%; text-align:center;">B</td> <td style="width:20%; text-align:center;">A</td> <td style="width:20%; text-align:center;">REVISION</td> <td style="width:20%;"> <p>UNLESS OTHERWISE SPECIFIED DIMENSIONS ARE IN INCHES</p> <table border="1" style="width:100%; border-collapse: collapse;"> <tr> <td>LINEAR TOLERANCES</td> <td>ANGULAR TOLERANCES</td> <td>FORMED</td> </tr> <tr> <td>.XX = ±.03</td> <td>MACH. ± 2'</td> <td></td> </tr> <tr> <td>.XXX = ± .010</td> <td>± 0' 30'</td> <td></td> </tr> </table> <p>LES XXXX = LEARJET ENGR SPEC MPS XXX = CANADAIR MATERIALS AND PROCESSES SPECIFICATION MPS XXXX = BCCM MATERIALS AND PROCESSES SPECIFICATION S-XXX(X) = LEARJET ENGR STD S-XXXX = CANADAIR EXTRUSION NO.</p> <p>FINISH SPEC: ALL MACHINED SURFACES: 125 ✓</p> </td> </tr> <tr> <td></td> <td>A.CARRIERE-R. 2015-05-20</td> <td>F. RIENDEAU 2014-12-17</td> <td style="text-align:center;">DRAWN</td> <td rowspan="3"> <p>FINISH CODE: 125 ✓</p> </td> </tr> <tr> <td></td> <td>NSSR</td> <td>A. CARRIERE-R 2014-12-17</td> <td style="text-align:center;">STRESS/ENG</td> </tr> <tr> <td></td> <td>F.RIENDEAU 2015-05-20</td> <td>F. RIENDEAU 2014-12-17</td> <td style="text-align:center;">APVD</td> </tr> </table>					B	A	REVISION	<p>UNLESS OTHERWISE SPECIFIED DIMENSIONS ARE IN INCHES</p> <table border="1" style="width:100%; border-collapse: collapse;"> <tr> <td>LINEAR TOLERANCES</td> <td>ANGULAR TOLERANCES</td> <td>FORMED</td> </tr> <tr> <td>.XX = ±.03</td> <td>MACH. ± 2'</td> <td></td> </tr> <tr> <td>.XXX = ± .010</td> <td>± 0' 30'</td> <td></td> </tr> </table> <p>LES XXXX = LEARJET ENGR SPEC MPS XXX = CANADAIR MATERIALS AND PROCESSES SPECIFICATION MPS XXXX = BCCM MATERIALS AND PROCESSES SPECIFICATION S-XXX(X) = LEARJET ENGR STD S-XXXX = CANADAIR EXTRUSION NO.</p> <p>FINISH SPEC: ALL MACHINED SURFACES: 125 ✓</p>	LINEAR TOLERANCES	ANGULAR TOLERANCES	FORMED	.XX = ±.03	MACH. ± 2'		.XXX = ± .010	± 0' 30'			A.CARRIERE-R. 2015-05-20	F. RIENDEAU 2014-12-17	DRAWN	<p>FINISH CODE: 125 ✓</p>		NSSR	A. CARRIERE-R 2014-12-17	STRESS/ENG		F.RIENDEAU 2015-05-20	F. RIENDEAU 2014-12-17	APVD									
	B	A	REVISION	<p>UNLESS OTHERWISE SPECIFIED DIMENSIONS ARE IN INCHES</p> <table border="1" style="width:100%; border-collapse: collapse;"> <tr> <td>LINEAR TOLERANCES</td> <td>ANGULAR TOLERANCES</td> <td>FORMED</td> </tr> <tr> <td>.XX = ±.03</td> <td>MACH. ± 2'</td> <td></td> </tr> <tr> <td>.XXX = ± .010</td> <td>± 0' 30'</td> <td></td> </tr> </table> <p>LES XXXX = LEARJET ENGR SPEC MPS XXX = CANADAIR MATERIALS AND PROCESSES SPECIFICATION MPS XXXX = BCCM MATERIALS AND PROCESSES SPECIFICATION S-XXX(X) = LEARJET ENGR STD S-XXXX = CANADAIR EXTRUSION NO.</p> <p>FINISH SPEC: ALL MACHINED SURFACES: 125 ✓</p>	LINEAR TOLERANCES	ANGULAR TOLERANCES	FORMED	.XX = ±.03	MACH. ± 2'		.XXX = ± .010	± 0' 30'																											
LINEAR TOLERANCES	ANGULAR TOLERANCES	FORMED																																					
.XX = ±.03	MACH. ± 2'																																						
.XXX = ± .010	± 0' 30'																																						
	A.CARRIERE-R. 2015-05-20	F. RIENDEAU 2014-12-17	DRAWN	<p>FINISH CODE: 125 ✓</p>																																			
	NSSR	A. CARRIERE-R 2014-12-17	STRESS/ENG																																				
	F.RIENDEAU 2015-05-20	F. RIENDEAU 2014-12-17	APVD																																				
<table border="1" style="width:100%; border-collapse: collapse;"> <tr> <td style="width:20%;"></td> <td style="width:20%; text-align:center;">B</td> <td style="width:20%; text-align:center;">A</td> <td style="width:20%; text-align:center;">REVISION</td> <td style="width:20%;"> <p>UNLESS OTHERWISE SPECIFIED DIMENSIONS ARE IN INCHES</p> <table border="1" style="width:100%; border-collapse: collapse;"> <tr> <td>LINEAR TOLERANCES</td> <td>ANGULAR TOLERANCES</td> <td>FORMED</td> </tr> <tr> <td>.XX = ±.03</td> <td>MACH. ± 2'</td> <td></td> </tr> <tr> <td>.XXX = ± .010</td> <td>± 0' 30'</td> <td></td> </tr> </table> <p>LES XXXX = LEARJET ENGR SPEC MPS XXX = CANADAIR MATERIALS AND PROCESSES SPECIFICATION</p></td></tr></table>					B	A	REVISION	<p>UNLESS OTHERWISE SPECIFIED DIMENSIONS ARE IN INCHES</p> <table border="1" style="width:100%; border-collapse: collapse;"> <tr> <td>LINEAR TOLERANCES</td> <td>ANGULAR TOLERANCES</td> <td>FORMED</td> </tr> <tr> <td>.XX = ±.03</td> <td>MACH. ± 2'</td> <td></td> </tr> <tr> <td>.XXX = ± .010</td> <td>± 0' 30'</td> <td></td> </tr> </table> <p>LES XXXX = LEARJET ENGR SPEC MPS XXX = CANADAIR MATERIALS AND PROCESSES SPECIFICATION</p>	LINEAR TOLERANCES	ANGULAR TOLERANCES	FORMED	.XX = ±.03	MACH. ± 2'		.XXX = ± .010	± 0' 30'																							
	B	A	REVISION	<p>UNLESS OTHERWISE SPECIFIED DIMENSIONS ARE IN INCHES</p> <table border="1" style="width:100%; border-collapse: collapse;"> <tr> <td>LINEAR TOLERANCES</td> <td>ANGULAR TOLERANCES</td> <td>FORMED</td> </tr> <tr> <td>.XX = ±.03</td> <td>MACH. ± 2'</td> <td></td> </tr> <tr> <td>.XXX = ± .010</td> <td>± 0' 30'</td> <td></td> </tr> </table> <p>LES XXXX = LEARJET ENGR SPEC MPS XXX = CANADAIR MATERIALS AND PROCESSES SPECIFICATION</p>	LINEAR TOLERANCES	ANGULAR TOLERANCES	FORMED	.XX = ±.03	MACH. ± 2'		.XXX = ± .010	± 0' 30'																											
LINEAR TOLERANCES	ANGULAR TOLERANCES	FORMED																																					
.XX = ±.03	MACH. ± 2'																																						
.XXX = ± .010	± 0' 30'																																						



BOMBARDIER AEROSPACE		Business Aircraft Services
WD - PASSENGER BRIEFING SYSTEM MODIFICATION		
SIZE	DWG NO	REV
B	BAS68028090	B
L:\MOProperty\H\50601. NTS		SHEET: 2 OF 2

BAS68028080 – Wiring Diagram – Passenger Briefing System Modification
(Sheet 2 of 2, Rev. B)

Basic Issue: Jul 07/2015

350-44-001
Page 11 of 11

BAS68028090B-S2

SERVICE BULLETIN EVALUATION FORM

(Your ideas will help us provide better bulletins)

SERVICE BULLETIN: 350-44-001 **ISSUE:** Basic **DATED:** Jul 07/2015

TITLE: Modification – Cabin Management System (CMS) – System Configuration
Database Software Update

In an effort to improve the quality of our technical communications, we are replacing the standard **Service Bulletin Evaluation Form** with an on-line **Service Bulletin Survey** and we are requesting your feedback. Please take a moment to fill out our easy on-line Service Bulletin survey at:

<http://csefeedback.aero.bombardier.com>

SERVICE BULLETIN INCORPORATION SHEET – "350-44-001"

BOMBARDIER SUBMISSION	<p>Upon completion of the Service Bulletin, please fill-in, fax to (514) 855-8798 or e-mail to Fracas at fracas.montreal@aero.bombardier.com</p> <p>If your aircraft is registered on CAMP and you are reporting to them, please do not send the incorporation sheet to Bombardier. If your aircraft is on another tracking system, please contact Bombardier to make arrangements for automated data submission.</p>
----------------------------------	---

Service Bulletin Number	Rev.	* Parts Completed	COMPLIED WITH			Remarks/Reason
			YES	NO	N/A	
350-44-001	Basic	PART A	<input type="checkbox"/>	<input type="checkbox"/>	<input type="checkbox"/>	_____
”	”	PART B	<input type="checkbox"/>	<input type="checkbox"/>	<input type="checkbox"/>	_____
_____	_____	_____	<input type="checkbox"/>	<input type="checkbox"/>	<input type="checkbox"/>	_____
_____	_____	_____	<input type="checkbox"/>	<input type="checkbox"/>	<input type="checkbox"/>	_____
_____	_____	_____	<input type="checkbox"/>	<input type="checkbox"/>	<input type="checkbox"/>	_____

Actual hours to accomplish Service Bulletin: _____

- * **NOTES:**
1. Where the Service Bulletin is divided into a number of parts (e.g., PARTS A, B, C, D, etc.) which can be carried out separately, indicate only those parts completed at this time.
 2. For repetitive checks (usually PART A) only the initial check should be reported unless otherwise stated in the Service Bulletin.
 3. When more than one part is carried out at the same time, each part should be reported.

Aircraft Serial No. _____	Aircraft Reg. No. _____
Airframe Hours: _____	Airframe Landings _____
S.B. Incorporation Date _____ (dd/mm/yy)	Service Order No. _____
Facility incorporating S.B. _____	
Name _____	Signature _____ Date _____ (dd/mm/yy)
Signature not required if sent by E-Mail	