

# BOMBARDIER

## SERVICE BULLETIN SUMMARY

This Service Bulletin is available at:  
[my.businessaircraft.bombardier.com](http://my.businessaircraft.bombardier.com)

MODEL BD-100-1A10 (CH-350)

ATA 76-00

### ENGINE CONTROLS

**MODIFICATION - ENGINE CONTROLS -  
ADDITION OF RELAYS TO THROTTLE QUADRANT ASSEMBLY (TQA) TO PREVENT  
SPOILER ELECTRONIC CONTROL UNIT (SECU) NUISANCE MESSAGES**

The information below is provided for your reference. For full details, including labor and part coverage, please see corresponding paragraph contained within this bulletin.

<b>RECOMMENDED</b>	<b>COMPLIANCE TIME</b>	
RELIABILITY/DISPATCHABILITY/COST AVOIDANCE	Not Applicable	
<b>EFFECTIVITY:</b> A/C Serial No. <b>20501</b> to <b>20806</b>		
<b>MANPOWER:</b> 30 man-hours		
<b>CONTINUED AIRWORTHINESS (CAW) FLEET CAMPAIGN</b>	YES <input type="checkbox"/>	<b>NO</b> <input checked="" type="checkbox"/>
<b>TLMC, CH 5 AFFECTED</b>	YES <input type="checkbox"/>	<b>NO</b> <input checked="" type="checkbox"/>
<b>KITS and/or PARTS</b>	<b>YES</b> <input checked="" type="checkbox"/>	NO <input type="checkbox"/>
<b>TOOLING/GSE</b>	<b>YES</b> <input checked="" type="checkbox"/>	NO <input type="checkbox"/>
<b>PLANNING INFORMATION</b>	YES <input type="checkbox"/>	<b>NO</b> <input checked="" type="checkbox"/>
<b>DEDICATED SCHEDULE</b>	YES <input type="checkbox"/>	<b>NO</b> <input checked="" type="checkbox"/>

To place an order for parts or kits, please call Bombardier Aerospace Parts Services at:

514-855-2999 or 1-866-538-1247

# SERVICE BULLETIN

This Service Bulletin is available at:  
[my.businessaircraft.bombardier.com](http://my.businessaircraft.bombardier.com)

MODEL BD-100-1A10 (CH-350)

ATA 76-00

ENGINE CONTROLS

**MODIFICATION - ENGINE CONTROLS -  
ADDITION OF RELAYS TO THROTTLE QUADRANT ASSEMBLY (TQA) TO PREVENT  
SPOILER ELECTRONIC CONTROL UNIT (SECU) NUISANCE MESSAGES**

## 1. PLANNING INFORMATION

**NOTE:** Before you do this Service Bulletin, examine all STC, STA or equivalent action changes to make sure that this Service Bulletin can be completed.

### A. Effectivity

BD-100-1A10 aircraft, Serial No. **20501 to 20806**.

**NOTE:** The instructions given in this Service Bulletin are only applicable to the systems and parts installed at the time of delivery of the aircraft or as changed by Bombardier Aerospace Service Bulletin(s).

### B. Reason

Mechanical differences between the switch lever/plunger position on a given Throttle Quadrant Assembly (TQA) lever cam can lead to a different signals to the Spoiler Electronic Control Unit (SECU).

The mismatch can lead to a SECU SPOILER FAULT advisory nuisance message or a SPOILER FAULT caution Engine Indication and Crew Alerting System (EICAS) nuisance message.

This Service Bulletin introduces a double pole relay between the TQA lever idle switches and the SECU 1 and 2, to prevent nuisance messages and premature TQA removals. The benefits to the operator are improved reliability and reduced maintenance costs.

Refer to applicable governmental agency regulations and requirements and make sure that the work described in this Service Bulletin is performed in compliance with manufacturer's recommendations and/or acceptable industry standards.

This document is proprietary to Bombardier Inc. and/or its affiliates and may not be reproduced or copied in any form or by any means without the prior written consent of Bombardier Inc. and/or its affiliates.

© 2019 Bombardier Inc. All rights reserved  
Learjet, Challenger, Global, are registered trademarks of Bombardier Inc. or its subsidiaries.

**CHALLENGER** <sup>350</sup>  
MODEL BD-100-1A10 (CH-350)

**C. Description**

This Service Bulletin gives instructions to:

- Get access to throttle quadrant idle switch interface,
- Install the bracket and relays,
- Do the wiring modification, and
- Do the necessary tests to make sure that the system(s) operate(s) correctly.

**D. Compliance**

Recommended – Reliability/Dispatchability/Cost Avoidance

NOTE: Failure to incorporate this Recommended Service Bulletin may result in rejection of future TQA warranty claims.

**E. Approval**

The technical content of this Service Bulletin has been approved under the authority of Transport Canada Civil Aviation (TCCA) Design Approval Organization (DAO) No. DAO #93-Q-02.

- NOTES:
1. The technical content of this Service Bulletin is accepted by the FAA under the Canada/USA bilateral Aviation Safety Agreement.
  2. The technical content of this Service Bulletin is accepted by EASA under the Canada/EU bilateral Aviation Safety Agreement.

**F. Manpower**

- NOTES:
1. The man-hours given are to help you schedule the tasks given in this Service Bulletin. The man-hours are for direct labor performed by an experienced crew and do not include the time for familiarization, planning, aircraft preparation in hangar such as towing and positioning of scaffolds, removal of interior furnishings, repainting, supervision and inspection.

For more information related to the manpower, refer to SB 350-00-002.

2. This Service Bulletin may require consumable materials that have specific curing times (refer to Paragraph 3). The accumulated curing time is not included in the man-hours and should be considered for planning purposes before you schedule this Service Bulletin.
3. Labor hours are based on the fact that the modification will be done at the next scheduled maintenance task or inspection (e.g. 800 or 1600 hour inspection, or next A-check, etc.). Therefore no man-hours are allotted to prepare the aircraft for maintenance or to prepare for this Service Bulletin.

30 man-hours are necessary to do this modification.

# CHALLENGER 350

## MODEL BD-100-1A10 (CH-350)

The labor required to do this Service Bulletin is at no cost if:

- the work is done during new aircraft warranty period, and
- the work is done at Bombardier Business Aviation Services (BBAS) or Authorized Service Facilities (ASF), and
- this Service Bulletin is scheduled in less than 12 months from its release date (Basic Issue).

**NOTE:** Failure to incorporate this Recommended Service Bulletin may result in rejection of future TQA warranty claims.

### G. Material – Cost and Availability

Kit 100K76-02 is necessary to do this modification.

KIT NO.	PRICE
100K76-02	Please contact Bombardier Aerospace Parts Services, in Montreal, for delivery lead times and confirmation of prices.

This kit is available at no cost if:

- ordered during new aircraft warranty period, and
- a no-charge purchase order is sent to Bombardier Aerospace in less than 12 months, from this Service Bulletin release date (Basic Issue).

For those aircraft in new aircraft warranty at the time of Service Bulletin distribution, Smart Parts Plus does not pay for the kit(s) at any time.

For those aircraft out of new aircraft warranty at the time of Service Bulletin distribution, Smart Parts Plus pays for the kit for up to 12 months from the Service Bulletin distribution date (Basic Issue).

**NOTE:** Failure to incorporate this Recommended Service Bulletin may result in rejection of future TQA warranty claims.

### H. Tooling

The equipment and tools listed below are necessary to do this modification:

GSE REFERENCE NO.	PART NO.	DESCRIPTION
24-00-24	S4933959-501	Tag, Circuit Breaker

Refer to the Standard Practices Manual (SPM), Wiring Manual (WM), Chapter 20, and the table that follows for the tools applicable to the wiring modification:

**CHALLENGER<sup>350</sup>**  
**MODEL BD-100-1A10 (CH-350)**

LUG/CONTACT	WIRING TOOL (SEE NOTE 3)			
	CRIMP	POSITIONER	INSERTION	EXTRACTION
B0802050-010 (A118CP1, A119CP1)	M22520/2-01	M22520/2-23	M81969/14-01	M81969/14-01
B0808005-006N (GS2202, GS2437)	AMP69692-1	-	-	-
M39029/56-348 (J232)	M22520/2-01 M22520/7-01	M22520/2-07 M22520/7-05	M81969/8-01 M81969/14-01	M81969/8-02 M81969/14-01
M39029/56-351 (A51P1, A51P2, A51P3, A51P4)	M22520/1-01 M22520/2-01 M22520/7-01	M22520/1-04 Red M22520/2-10 M22520/7-08	M81969/8-05 M81969/14-10	M81969/8-06 M81969/14-10
M39029/58-360 (J233, J210, CBP2J1)	M22520/2-01 M22520/7-01	M22520/2-09 M22520/7-07	M81969/8-02 M81969/14-01	M81969/8-02 M81969/14-01
M39029/101-553 (K121, K122)	M22520/7-01	M22520/7-12	M81969/16-01	-

- NOTES:**
1. Refer to the BD-100 Illustrated Tool and Equipment Manual (ITEM) to make sure that you use the correct equipment configuration.
  2. Refer to the Liability Statement in the ITEM for acceptable GSE equivalents.
  3. This list is provided for a quick reference. In case of discrepancy between this list and the tool called out in the SPM-WM, Chapter 20, then the tool called in the SPM-WM will prevail. Other approved alternative tools are acceptable and can also be used.

**I. Weight and Balance**

A/C SERIAL NO.	WEIGHT	MOMENT
20501 to 20806	+0.54 pounds (+ 0.25 kg)	+167.35 pound-inches (+ 1.9281 kgm)

**J. Electrical Load Data**

No change.

**K. References**

- Bombardier Aerospace, Modification Summary, BB100T010972 Rev. B-1.

# CHALLENGER<sup>350</sup>

## MODEL BD-100-1A10 (CH-350)

- Bombardier Aerospace, Standard Practices Manual (SPM), Chapter 20.
- Bombardier Aerospace, Kit Drawing K1000070455, Rev. ---.
- Bombardier Aerospace, Kit Drawing K1000070456, Rev. ---.
- Bombardier Aerospace, Kit Drawing K1002760001, Rev. ---.
- CH 350 Aircraft Maintenance Manual (AMM), Chapters 27 and 76.
- CH 350 Aircraft Illustrated Parts Catalog (AIPC), Chapter 27.
- CH 350 Wiring Manual (WM), Chapter 27.
- CH 350 Structural Repair Manual (SRM), Chapter 51.

### L. Other Publications Affected

None.

### M. Equivalent Service Bulletins

For the Challenger 300 aircraft, use SB 100-76-02.

## 2. ACCOMPLISHMENT INSTRUCTIONS

**NOTE:** All references made to zones, access panels and/or doors, are from the CH-350 AMM, Chapter 6.

### A. Aircraft Setup

**NOTE:** The steps in the Aircraft Setup section of this Service Bulletin are recommended steps. The steps give a recommendation to get access to the work area. This recommendation is to give a safe work area and to minimize possible damage to surrounding aircraft parts. Alternative steps can be used at the operator's discretion.

- (1) Obey all electrical/electronic safety precautions. Refer to AMM 24-00-00-910-801.
- (2) Open and tag the circuit breakers that follow:

CB PANEL	CB NO.	NAME	ZONE
LCBP	A12	R FADEC CH A	211
LCBP	A13	L FADEC CH A	211
LCBP	B9	SPOILER CTRL 1	211
LCBP	C13	WOW A/RET/EXT	211
LCBP	C14	WOW B	211
LCBP	D1	DCU A	211

**CHALLENGER** <sup>350</sup>  
MODEL BD-100-1A10 (CH-350)

CB PANEL	CB NO.	NAME	ZONE
LDCPC	A6	L LDG LIGHTS	311
LSPC	A1	ENG START A	221
LSPC	A3	ENG RUN CH A	221
LSPC	E5	CABIN SIGNS	221
LSPC	E6	WING INSP	221
LSPC	E8	BCN/STROBE	221
RCBP	A12	R FADEC CH B	212
RCBP	A13	L FADEC CH B	212
RCBP	B9	SPOILER CTRL 2	212
RCBP	C13	WOW B/EXT	212
RCBP	C14	WOW A/RET	212
RCBP	D1	DCU B	212
RCBP	E15	EMER LTS	212
RDCPC	A6	R LDG LIGHTS	312
RSPC	E5	NOSE GEAR TAXI	222
RSPC	A1	ENG START	222
RSPC	A3	ENG RUN CH B	222
RSPC	E6	NOSE GEAR LDG	222
RSPC	E7	LOGO LTS	222
RSPC	E8	NAV LTS	222

- (3) Remove the co-pilot seat. Refer to AMM 25-11-13-000-801.
- (4) Remove the LEFT and RIGHT aft pedestal access panels 211ELZ and 211ERZ.
- (5) Remove the LEFT and RIGHT center pedestal access panels 211DLZ and 211DRZ.
- (6) Remove Floor Panel 221ALF.
- (7) Remove the Lighting Control Panel. Refer to AMM 33-41-01-000-801.

# CHALLENGER 350

## MODEL BD-100-1A10 (CH-350)

- (8) Remove the TQA. Refer to AMM 76-10-01-000-801.
- (9) Remove the Equipment Rack Access Panels 221DZ and 222DZ. Refer to AMM 25-72-01-000-803.
- (10) Remove the Data Control Unit (DCU). Refer to AMM 31-41-01-000-802.
- (11) Remove the DCU Tray. Refer to AMM 31-41-03-000-801.
- (12) Remove the Spoiler Electronic Control Unit 1 (SECU1). Refer to AMM 27-61-05-000-801.
- (13) Remove the SECU1 Tray. Refer to AMM 27-61-07-000-801.
- (14) Remove the Spoiler Electronic Control Unit 2 (SECU2). Refer to AMM 27-61-05-000-801.
- (15) Remove the SECU2 Tray. Refer to AMM 27-61-07-000-801.
- (16) Remove the Proximity-Sensor Electronic Unit (PSEU). Refer to AMM 32-61-09-000-801.

### B. Modification

**NOTE:** If it is not possible to complete all the instructions in this Service Bulletin because of the configuration of the aircraft, submit an SRPSA for analysis and to get an approved disposition to complete this Service Bulletin.

- (1) Do the modification on the center pedestal as follows.

**CAUTION:** OBEY ALL ELECTROSTATIC DISCHARGE-SENSITIVE (ESDS) PRECAUTIONS. STATIC VOLTAGES CAN CAUSE DAMAGE TO ESDS COMPONENTS.

- (2) Obey all electrostatic discharge safety precautions. Refer to AMM 24-00-00-910-802.
- (3) Install the bracket, Part No. K1000070455-001, with rivets MS20470AD4-5 per SRM 51-42-08. Refer to Figure 1.
- (4) Install the relay sockets M12883/45-01 and relays M83536/2-024M. Refer to SPM 20-39-00-02.
- (5) Touch-up the reworked areas on aluminum parts per finish code X060. Refer to SRM 51-01-04.
- (6) Faying surface seal per SPM 51-23-00.
- (7) Do the identification (ink stamp) per best shop practices.
- (8) Do the wiring modification. Refer to Figure 2 and 3.
  - (a) Relocate the wires as follows.

NUMBER	TYPE	FROM (IS)		TO (WAS)	
		IDENT	PIN	IDENT	PIN
MBE2048	B0801690-22	A118CP1	P1	J210	25

**CHALLENGER** <sup>350</sup>  
**MODEL BD-100-1A10 (CH-350)**

MBF1349	B0801690-22	A119CP1	P1	CBP2J1	18
MCJ1714	B0801190-22-9	J233	A4	A51P2	a
MCJ1715	B0801190-22-9	J233	A5	A51P2	N
MCK1792	B0801190-22-9	J232	124	A51P4	a
MCK1793	B0801190-22-9	J232	125	A51P4	N
MCK1795	B0801190-22-9	J232	126	A51P3	a
MCK1796	B0801190-22-9	J232	127	A51P3	N
MCJ1717	B0801190-22-9	J233	46	A51P1	a
MCJ1718	B0801190-22-9	J233	47	A51P1	N
MCK1797N	B0801190-22-9	GS2202	GND	A51P3	P
MCJ1716N	B0801190-22-9	GS2437	GND	A51P2	P

(b) Install the wires as follows.

NUMBER	TYPE	FROM (IS)		TO (IS)	
		IDENT	PIN	IDENT	PIN
MBE2048	B0801690-22	A118CP1	P1	SP145	2
MBF1349	B0801690-22	A119CP1	P1	SP146	2
MCJ1714	B0801190-22-9	J233	A4	KJ122	B3
MCJ1715	B0801190-22-9	J233	A5	KJ122	B1
MCK1792	B0801190-22-9	J232	124	KJ122	A3
MCK1793	B0801190-22-9	J232	125	KJ122	A1
MCK1795	B0801190-22-9	J232	126	KJ121	B3
MCK1796	B0801190-22-9	J232	127	KJ121	B1
MCJ1717	B0801190-22-9	J233	46	KJ121	A3
MCJ1718	B0801190-22-9	J233	47	KJ121	A1
MCK1797N	B0801190-22-9	GS2202	GND	A51P2	P
MCJ1716N	B0801190-22-9	GS2437	GND	A51P3	P

**CHALLENGER** <sup>350</sup>  
**MODEL BD-100-1A10 (CH-350)**

(c) Install new wires as follows.

NUMBER	TYPE	FROM		TO	
		IDENT	PIN	IDENT	PIN
MBE2811	B0801690-22	J210	25	SP145	1
MBE2731	B0801690-22	SP145	2	P232	25
MBEJ026	SUPPLIED TAIL	P232	SHD	P232	SHD
MCE2731	B0801190-22-9	J232	25	KJ121	X1
MBF2734	B0801690-22	CBP2J1	18	SP146	1
MBF2733	B0801690-22	SP146	2	P232	26
MBFJ073	SUPPLIED TAIL	P232	SHD	P232	SHD
MCF2733	B0801190-22-9	J232	26	KJ122	X1
MCKJ043	B0801190-22-9	A51P2	N	SP144	1
MCK2745	B0801190-22-9	A51P4	N	SP144	2
MCJ2741	B0801190-22-9	A51P1	N	SP143	1
MCJJ025	B0801190-22-9	A51P3	N	SP143	2
MCJ2742N	B0801190-22-9	KJ122	B2	GS2435	GND
MCK2744N	B0801190-22-9	KJ122	A2	GS2436	GND
MCK2735	B0801190-22-9	KJ122	X2	SP144	2
MCK2747N	B0801190-22-9	KJ121	B2	GS2438	GND
MCJ2748N	B0801190-22-9	KJ121	A2	GS2437	GND
MCJ2746	B0801190-22-9	KJ121	X2	SP143	2
MBEJ029	SUPPLIED TAIL	J210	SHD	J210	SH
MBFJ083	SUPPLIED TAIL	CBP2J1	SHD	CBP2J1	SH

(d) Install splices per SPM WM 20-16-00.

(e) Install electrical identifications K121, K122, KJ121, and KJ122. Refer to SPM WM 20-10-00 .

(9) Apply humiseal on the electrical connections. Refer to SPM WM 20-41-00.

**CHALLENGER** <sup>350</sup>  
**MODEL BD-100-1A10 (CH-350)**

**C. Testing**

- (1) Verify all new or modified wires for continuity and/or ground. Refer to SPM WM 20-12-01-05.
- (2) Install the LIGHTING Control Panel. Refer to AMM 33-41-01-400-801.
- (3) Install the TQA. Refer to AMM 76-10-01-400-801.
- (4) Install the DCU Tray. Refer to AMM 31-41-03-400-801.
- (5) Install the DCU. Refer to AMM 31-41-01-400-802.
- (6) Install the SECU1 Tray. Refer to TASK 27-61-07-400-801.
- (7) Install the SECU1. Refer to AMM 27-61-05-400-801.
- (8) Install the SECU2 Tray. Refer to TASK 27-61-07-400-801.
- (9) Install the SECU2. Refer to AMM 27-61-05-400-801.
- (10) Install the PSEU. Refer to AMM 32-61-09-400-801.
- (11) Remove the tags and close the circuit breakers that follow:

<b>CB PANEL</b>	<b>CB NO.</b>	<b>NAME</b>	<b>ZONE</b>
LCBP	A12	R FADEC CH A	211
LCBP	A13	L FADEC CH A	211
LCBP	B9	SPOILER CTRL 1	211
LCBP	C13	WOW A/RET/EXT	211
LCBP	C14	WOW B	211
LCBP	D1	DCU A	211
LDCPC	A6	L LDG LIGHTS	311
LSPC	A1	ENG START A	221
LSPC	A3	ENG RUN CH A	221
LSPC	E5	CABIN SIGNS	221
LSPC	E6	WING INSP	221
LSPC	E8	BCN/STROBE	221
RCBP	A12	R FADEC CH B	212
RCBP	A13	L FADEC CH B	212
RCBP	B9	SPOILER CTRL 2	212

**CHALLENGER<sup>350</sup>**  
**MODEL BD-100-1A10 (CH-350)**

<b>CB PANEL</b>	<b>CB NO.</b>	<b>NAME</b>	<b>ZONE</b>
RCBP	C13	WOW B/EXT	212
RCBP	C14	WOW A/RET	212
RCBP	D1	DCU B	212
RCBP	E15	EMER LTS	212
RDCPC	A6	R LDG LIGHTS	312
RSPC	E5	NOSE GEAR TAXI	222
RSPC	A1	ENG START	222
RSPC	A3	ENG RUN CH B	222
RSPC	E6	NOSE GEAR LDG	222
RSPC	E7	LOGO LTS	222
RSPC	E8	NAV LTS	222

- (12) Do the operational test of the throttle quadrant. Refer to AMM 76-10-01-710-801.
- (13) Do the operational test of the gust lock system. Refer to AMM 27-70-00-710-801.
- (14) Do the operational test of the thrust reverser. Refer to AMM 78-30-00-710-801.
- (15) Do the operational test of the spoiler system. Refer to AMM 27-61-00-710-801.
- (16) Do the operational test of the external lights. Refer to AMM 33-40-00-710-801.
- (17) Do the operational test of the EICAS. Refer to AMM 31-41-00-710-801.
- (18) Do the functional test of the PSEU. Refer to AMM 32-61-09-720-801.

**D. Close-out**

**NOTE:** The steps in the Close-out section of this Service Bulletin, except for the return-to-service tests, are recommended steps. The steps give a recommendation to install components removed during the Aircraft Setup. This recommendation is to make sure that the aircraft is safe and ready to return to service. Alternative steps can be used at the operator's discretion.

- (1) Install the LEFT and RIGHT aft pedestal access panels 211ELZ and 211ERZ.

**CHALLENGER** <sup>350</sup>  
MODEL BD-100-1A10 (CH-350)

- (2) Install the LEFT and RIGHT center pedestal access panels 211DLZ and 211DRZ.
- (3) Install the Floor Panel 221ALF.
- (4) Install the Equipment Rack Access Panels 221DZ and 222DZ. Refer to AMM 25-72-01-400-803.
- (5) Install the co-pilot seat. Refer to AMM 25-11-13-400-801.
- (6) Remove all tools, equipment and unwanted materials from the aircraft.

**E. Recording**

When this Service Bulletin is completed, make an entry in the aircraft log and send the attached Incorporation Notice to Bombardier Business Aircraft Customer Services (BBACS).

For information, correction(s), comments(s) and/or feedback regarding Service Bulletins released on the Customer Portal, please contact the Service Bulletin Group at the following email address:

[bbad\\_SBgroup@aero.bombardier.com](mailto:bbad_SBgroup@aero.bombardier.com)

**3. MATERIAL INFORMATION**

**A. Kits**

Kit 100K76-02 is necessary to do this Service Bulletin and contains the parts that follow:

NEW PART NO.	QTY	ITEM	USED PART NO.	INSTRUCTIONS - DISPOSITION
100-76-02/01	1	Ident. Kit	-	-
K1000070455-001	1	Relay Bracket	-	-
K1002760001/01	1	Wire Kit	-	-
M83536/2-024M	2	Relay	-	-
MS20470AD4-5	4	Rivet, Solid	-	-

- NOTES:**
1. In case of discrepancy between this list and the Service Bulletin Kit Parts List contained in the respective kit, then the later list prevails.
  2. The actual quantity for some of the hardware contained in the kit can be greater than the amount shown in the table as these items are supplied in prepackaged quantities.

**CHALLENGER** <sup>350</sup>  
 MODEL BD-100-1A10 (CH-350)

**B. Parts**

No parts required.

**C. Material**

The materials that follow, or equivalent, are necessary to do this Service Bulletin. These can be purchased from a local supplier. Bombardier Aerospace does not pay for these consumables.

DESCRIPTION	PART NO./NAME	SPECIFICATION	QUANTITY	SUPPLIER (SEE NOTE)
Humiseal CT: 24 hours	1B15	-	As Necessary	Code: A
Compound, sealing	Pro Seal 870 C	MIL-PRF-81733 Type IV	As Necessary	Code: B
Fluid-resistant epoxy primer	-	BAMS 565-001	As Necessary	Code: B

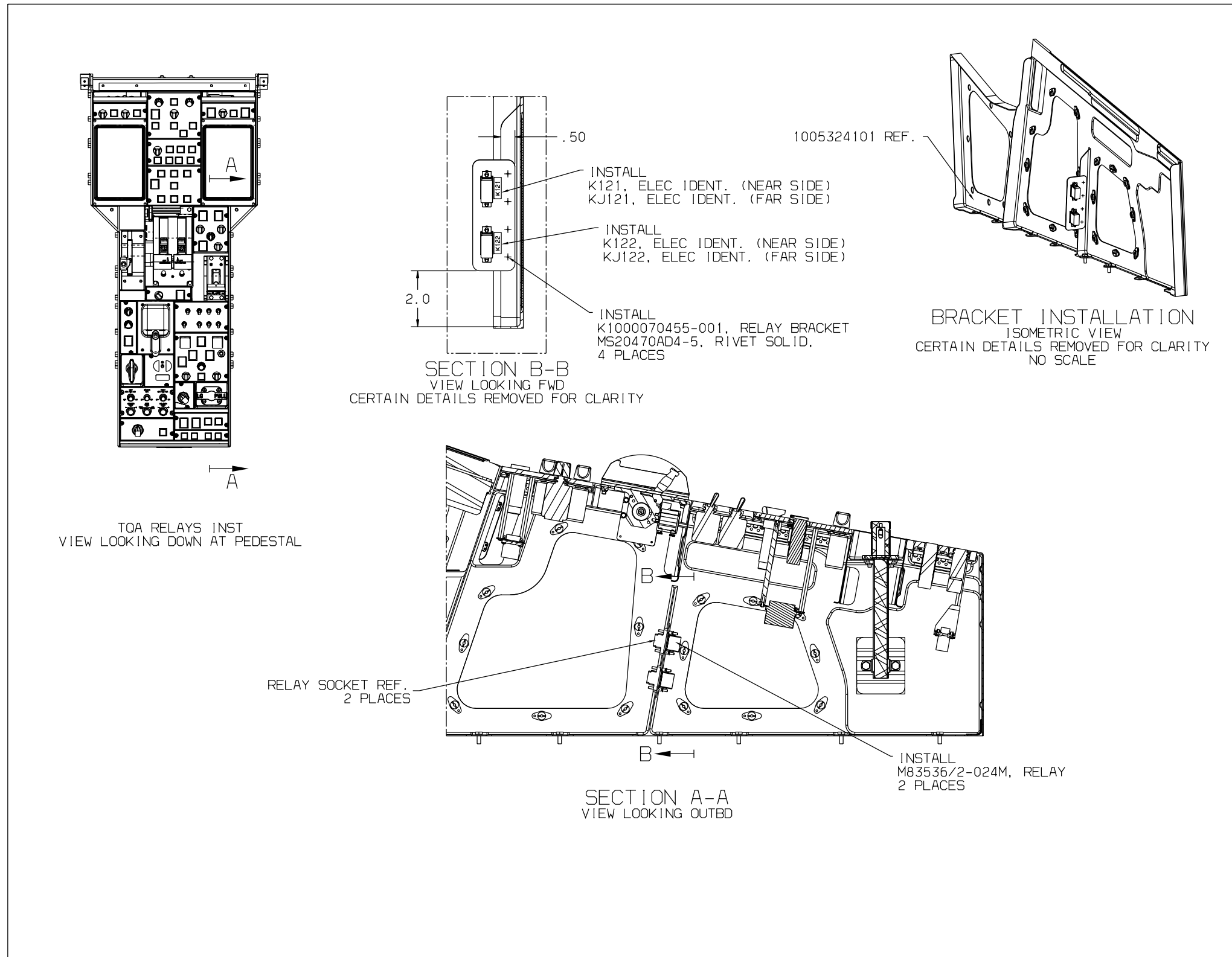
- NOTES:**
1. Refer to the table that follows for each suppliers address listed by codes.
  2. The Curing Time (CT), if applicable, for each consumable material is indicated with the description of each product.
  3. At time of release of this Service Bulletin, the information on the supplier was valid and accurate. In the event that this information has changed, the operator is encouraged to use the World Wide Web to find a local supplier.

<b>SUPPLIERS ADDRESSES BY CODES</b>	
<b>Code: A</b>  Humiseal Chase Speciality Coatings 128 First St., Pittsburg PA 15238, U.S.A. Tel.: 1-866-828-5470	<b>Code: B</b>  PRC-Desoto International 12780 San Fernando Road Sylmar, CA, 91342 U.S.A Tel.: (818) 362-6711  <a href="http://www.ppgaerospace.com">www.ppgaerospace.com</a>

**D. Publications**

No publications required.

**CHALLENGER 350**  
 MODEL BD-100-1A10 (CH-350)



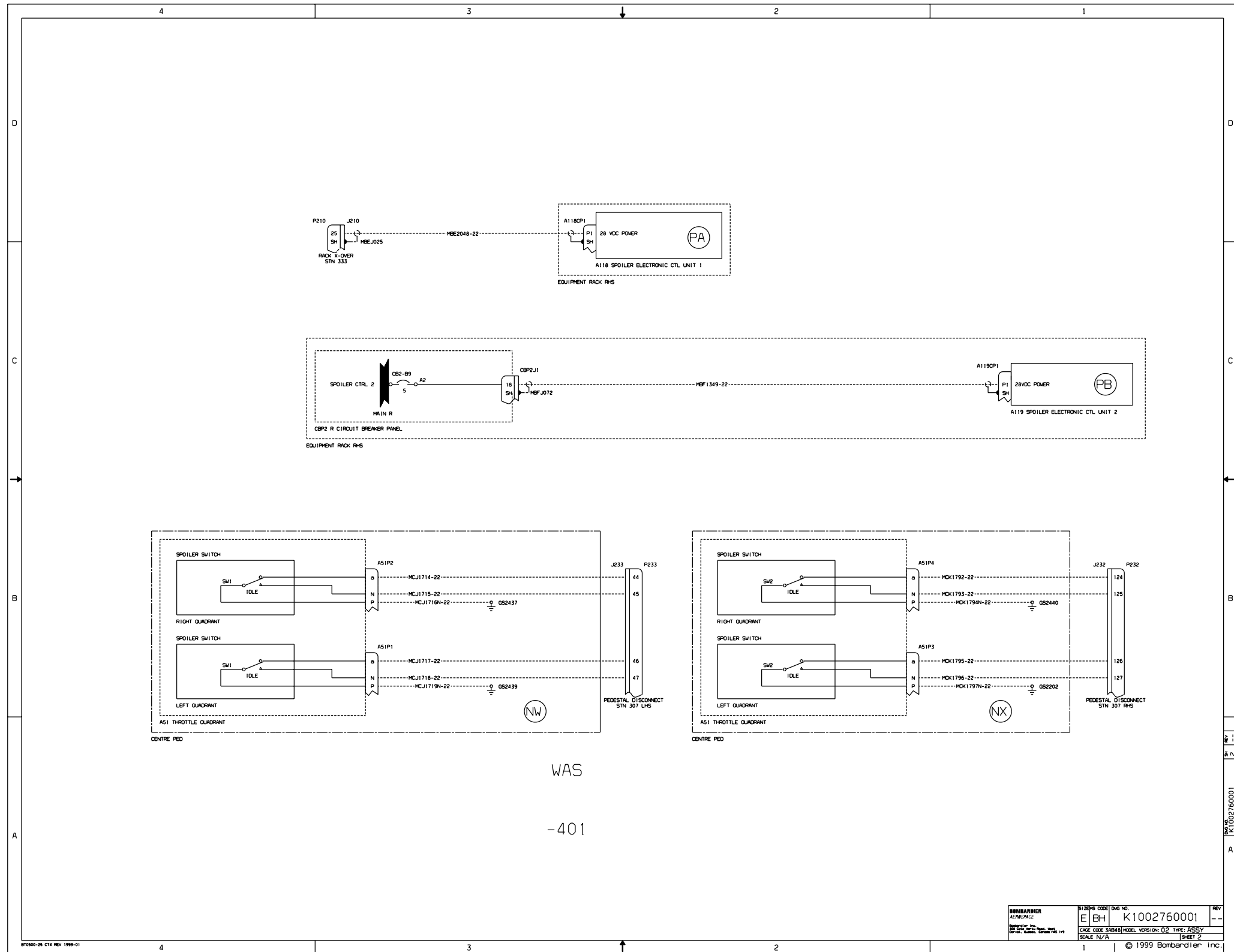
SB100-76-02\_001

TQA Relays Installation  
 Figure 1



# CHALLENGER 350

## MODEL BD-100-1A10 (CH-350)



Wiring modification  
Figure 3

**350-76-001**  
Page 16 of 16

BOMBARDIER AEROSPACE	SIZE: CODE: Dwg No.	REV
E BH	K1002760001	---
CODE: 38484	MODEL VERSION: 02	TYPE: ASSY
SCALE: N/A	SHEET 2	
© 1999 Bombardier inc.		

SB100-76-02\_013

# BOMBARDIER

## SERVICE BULLETIN EVALUATION FORM

(Your ideas will help us provide better bulletins)

**SERVICE BULLETIN:** 350-76-001      **ISSUE:** Basic      **DATED:** Jul 12/2019

**TITLE:**      MODIFICATION – ENGINE CONTROLS –  
                  ADDITION OF RELAYS TO THROTTLE QUADRANT ASSEMBLY (TQA)  
                  TO PREVENT SPOILER ELECTRONIC CONTROL UNIT (SECU)  
                  NUISANCE MESSAGES

For any information, correction(s), comment(s) and/or feedback regarding Service Bulletins released on the Customer Portal, please contact the Service Bulletin Group at the following email address:

[bbad\\_SBgroup@aero.bombardier.com](mailto:bbad_SBgroup@aero.bombardier.com)

NOTE: Please use Salesforce **only** for troubleshooting issues or when Engineering deviation is necessary to accomplish the Service Bulletin modification.

# BOMBARDIER

## SERVICE BULLETIN INCORPORATION SHEET – "350–76–001"

<b>BOMBARDIER SUBMISSION</b>	<p>Upon completion of the Service Bulletin, please fill-in, fax to (514) 855–8798 or e-mail to Fracas at <a href="mailto:fracas.montreal@aero.bombardier.com">fracas.montreal@aero.bombardier.com</a></p> <p><b>If you're reporting Service Bulletin (SB) Incorporations to CAMP, sending this Incorporation Sheet to Bombardier is not mandatory.</b> If your aircraft is on another tracking system, please contact Bombardier to make arrangements for automated data submission.</p>
----------------------------------	------------------------------------------------------------------------------------------------------------------------------------------------------------------------------------------------------------------------------------------------------------------------------------------------------------------------------------------------------------------------------------------------------------------------------------------------------------------------------------------

Service Bulletin Number	Rev.	* Parts Completed	<u>COMPLIED WITH</u>			Remarks/Reason (Mandatory if N/A)
			YES	NO	N/A	
<u>350–76–001</u>	<u>Basic</u>	_____	<input type="checkbox"/>	<input type="checkbox"/>	<input type="checkbox"/>	_____
_____	_____	_____	<input type="checkbox"/>	<input type="checkbox"/>	<input type="checkbox"/>	_____
_____	_____	_____	<input type="checkbox"/>	<input type="checkbox"/>	<input type="checkbox"/>	_____
_____	_____	_____	<input type="checkbox"/>	<input type="checkbox"/>	<input type="checkbox"/>	_____
_____	_____	_____	<input type="checkbox"/>	<input type="checkbox"/>	<input type="checkbox"/>	_____

**Actual hours to accomplish Service Bulletin:** \_\_\_\_\_

- \* **NOTES:**
1. Where the Service Bulletin is divided into a number of parts (e.g., PARTS A, B, C, D, etc.) which can be carried out separately, indicate only those parts completed at this time.
  2. For repetitive checks (usually PART A) only the initial check should be reported unless otherwise stated in the Service Bulletin.
  3. When more than one part is carried out at the same time, each part should be reported.
  4. Fill in 'Remark/Reason' to explain compliance method when N/A is selected. (E.g. Part not installed, N/A by effectivity, N/A by Part Serial Number, etc.)
  5. PCW means 'Previously Complied With'.

Aircraft Serial No. _____	Aircraft Reg. No. _____
Airframe Hours: _____	Airframe Landings _____
S.B. Incorporation Date _____ (dd/mm/yy)	Service Order No. _____
Facility incorporating S.B. _____	
Name _____	Signature _____ Date _____ (dd/mm/yy)
Signature not required if sent by E-Mail	