

SERVICE BULLETIN

This Service Bulletin is available at:
www.cic.bombardier.com

MODEL BD-700-1A10 (BD-700)

ATA 55-10

STABILIZERS

**MODIFICATION – HORIZONTAL STABILIZER –
 ADDITION OF DRAINAGE HOLES TO ELIMINATE WATER ACCUMULATION AND
 ADDITION OF RIVETS ON THE ACCESS PANELS NUTPLATE ASSEMBLIES**

1. PLANNING INFORMATION

A. Compliance

Recommended

NOTE: PART A of this Service Bulletin reflects the Advisory Wire GX700T-0034, dated 27 November 2000.

B. Approval

This modification is approved by the Bombardier Aerospace, Design Approval Designee(s) for Transport Canada Aviation (TCA).

This modification is also Federal Aviation Administration (FAA) approved under the TCA/FAA bilateral agreement.

C. Effectivity

BD-700-1A10 aircraft, Serial No. **9002** to **9999**.

- NOTES:
1. The intent of this Service Bulletin has not been introduced to the production aircraft at this time. A revision to this Service Bulletin will be issued in the future to limit the effectivity for in-service aircraft when the information is known.
 2. The instructions given in this Service Bulletin are only applicable to the systems and parts installed at the time of delivery of the aircraft or as changed by Bombardier Aerospace Service Bulletin(s).

Before you do this bulletin, examine all STC, STA or equivalent action changes to make sure that this bulletin can be completed.

Refer to applicable governmental agency regulations and requirements and make sure that the work described in this Service Bulletin is performed in compliance with manufacturer's recommendations and/or acceptable industry standards. This document is proprietary to Bombardier Inc. and/or its affiliates and may not be reproduced or copied in any form or by any means without the prior written consent of Bombardier Inc. and/or its affiliates.

© 2002, Bombardier Inc. All rights reserved.
 Challenger*, Global Express*, Learjet* are Trademarks of Bombardier Inc.

D. Reason

During a routine inspection, water accumulation was found within the lower visor fairings and the lower panels located above the horizontal stabilizer trailing-edge. PART A of this Service Bulletin gives instructions to add drain holes on the horizontal stabilizer and the elevator to avoid water accumulation. This will prevent early deterioration of structural components.

Nutplate assemblies are bonded to the horizontal stabilizer structure. During screw installation, the shroud panels of the nutplate assemblies (gang channels) easily come unbonded from the horizontal stabilizer structure. PART B of this Service Bulletin gives instructions to add an inter pitching of rivets to give more rigidity and prevent the gang channels from coming off.

E. Description

This Service Bulletin gives instructions in:

PART A to:

- Get access to the horizontal stabilizer,
- Remove the panels to be modified,
- Do the modification as per Kit Drawing KGC991-1094, and
- Re-identify and install the modified panels.

PART B to:

- Get access to the horizontal stabilizer, and
- Do the modification of the gang channels as per Kit Drawing KGC991-1098.

F. Manpower

NOTE: The man-hours given are estimates to help you schedule the tasks given in this bulletin. The estimates are for direct labor performed by an experienced crew and do not include the time for familiarization, planning, aircraft preparation in hangar such as towing and positioning of scaffolds, removal of interior furnishings, curing times for consumable materials, repainting, supervision and inspection.

For more information related to the manpower estimates, refer to SB 700-00-002.

Twenty six man-hours are necessary to do PART A of this Service Bulletin.

Fifty two man-hours are necessary to do PART B of this Service Bulletin.

For aircraft in new aircraft warranty, labor is at no cost if the work is done at Business Aviation Services or Authorized Service Facilities. For Bombardier Aerospace to pay for the labor, Service Bulletin must also be scheduled in less than 12 months from its release date.

G L O B A L E X P R E S S[®]
MODEL BD-700-1A10

G. Material - Cost and Availability

No kit is necessary to do PART A of this Service Bulletin.

Kit 700K55-004 is necessary to do PART B of this modification.

Five kits were available when this Service Bulletin was released. Sufficient kits will be kept for the estimated amount of orders.

For aircraft in new aircraft warranty, this kit is available at no cost if a no-charge purchase order is sent to Bombardier Aerospace in less than 12 months from this Service Bulletin release date.

During or after the above free period, Smart Parts Plus does not pay for the kit.

H. Tooling - Price and Availability

No equipment or special tools are necessary.

I. Weight and Balance

No change

J. Electrical Load Data

No change

K. References

- Bombardier Aerospace, Modification Summary R700T400102, Rev. D1
- Bombardier Aerospace, Modification Summary R700T400109, Rev. D
- Bombardier Aerospace, Advisory Wire GX700T-0034, dated 27 November 2000
- Bombardier Aerospace, Kit Drawing KGC991-1094, Rev. C
- Bombardier Aerospace, Kit Drawing KGC991-1098, Rev. C
- BD-700 Aircraft Maintenance Manual, Chapters 6, 24 and 55
- BD-700 Structural Repair Manual (SRM), Chapter 51.

L. Other Publications Affected

- BD-700 Aircraft Illustrated Parts Catalog (IPC), Chapter 55.

NOTE: It is recommended that you record the new parts added by this Service Bulletin in your IPC for the Chapters and Figures that follow:

BD-700 IPC REFERENCE

CHAPTERS	FIGURES
55-10-00	1
55-10-00	9

The IPC will include these changes in a future revision.

M. Other Publications Affected

None

N. Equivalent Service Bulletin

None

2. ACCOMPLISHMENT INSTRUCTIONS

- NOTES:** 1. All TASKs referenced in the procedures that follow are from the BD-700 Aircraft Maintenance Manual, unless otherwise specified.
2. All references made to zones, access panels and/or doors, are from the BD-700 Aircraft Maintenance Manual, Chapter 6.

A. Aircraft Setup

NOTE: The procedures that follow are applicable to PART A and PART B.

- (1) Obey all electrical/electronic safety precautions. Refer to TASK 24-00-00-910-801.
- (2) In the flight compartment, on the ELECTRICAL control panel, set the BATT MASTER switch to ON.

WARNING: MAKE SURE YOU DO NOT SET THE EMS CDU CIRCUIT BREAKERS TO 'LOCK'. IF YOU DO THIS AND YOU APPLY ELECTRICAL POWER, THE CIRCUIT BREAKERS WILL AUTOMATICALLY BE SET TO THEIR ORIGINAL POSITION. THIS WILL PUT THE AIRCRAFT IN A DANGEROUS CONDITION FOR MAINTENANCE.

- (3) On the Electrical Management System (EMS), Control Display Unit (CDU), installed on the pilot's and copilot's side panel, set the circuit breakers that follow to OUT:

SYSTEM NAME	CIRCUIT BREAKER NAME	BUS NAME
FLT CONTROLS	RUDDER TRIM	DC ESS
FLT CONTROLS	P FEEL/RUD LIM 1	DC 1
FLT CONTROLS	P FEEL/RUD LIM 2	DC ESS
LIGHTS	LOGO LTS	AC 4
LIGHTS	OVHD 1 INTG LTS	BATT
LIGHTS	OVHD 2 INTG LTS	DC 1

- (4) On the ELECTRICAL control panel, set the BATT MASTER switch to OFF.

G L O B A L E X P R E S S[®]
MODEL BD-700-1A10

- (5) Open and tag, the circuit breakers that follow:

LOCATION	CB NO.	NAME	ZONE
ACPC	B6	STAB TRIM CH 1	252
CCBP	E5	STAB TRIM CH 2	222

B. PART A: Modification – Addition of Drainage Holes

- (1) Remove the lower trailing-edge access-panels that follow. Refer to TASK 55-10-17-000-802 for the removal procedure.

IDENTIFICATION CODE LEFT/RIGHT	TYPE OF ACCESS
352AB / 362AB	Access Panel
352BB / 362BB	Access Panel
352CB / 362CB	Access Panel
352EB / 362EB	Access Panel

- (2) Remove the lower visor assembly 346JL and 346JR. Refer to TASK 55-10-05-000-810.
- (3) Remove the lower aft mid fairing 346FL and 346FR. Refer to TASK 55-10-05-000-806.
- (4) Do the modification to the fairings listed in the next table. Refer to the Kit Drawing KGC991-1094 and the procedure that follows:

- (a) Drill a pilot hole with #40 drill.

NOTES: 1. Use a back up (wood block) on the other side of panel when drilling to hold the back side and avoid delamination of composite material.

2. Use only carbide-tipped drills.

- (b) Open the hole to 0.250 inch diameter.

NOTE: Use Epoxy coating EA 956 B/A or EPOCAST 50-A/9816 as a replacement to FR 3000 as given in Kit Drawing KGC991-1094.

G L O B A L E X P R E S S®
MODEL BD-700-1A10

(c) Seal the new hole with EA956 B/A or EPOCAST 50-A/9816 epoxy coating.

FAIRING PART NO.	IDENT. CODE	TYPE OF ACCESS	FAIRING NEW PART NO.
GS253-0321-7	352AB	Access Panel	KGC991-1094-11
GS253-0321-8	362AB	Access Panel	KGC991-1094-12
GS253-0322-5	352BB	Access Panel	KGC991-1094-13
GS253-0322-6	362BB	Access Panel	KGC991-1094-14
GS254-0002-003	-	Lower Skin Torque Box	KGC991-1094-17
GS254-0002-004	-	Lower Skin Torque Box	KGC991-1094-18
GS255-0130-11	346JL	Access Panel	KGC991-1094-21
GS255-0130-12	346JR	Access Panel	KGC991-1094-22
GS253-0326-5	352EB	Access Panel	KGC991-1094-27
GS253-0326-6	362EB	Access Panel	KGC991-1094-28
GS255-0110-3	346FL	Lower Aft Mid Fairing	KGC991-1094-29
GS255-0110-4	346FR	Lower Aft Mid Fairing	KGC991-1094-30
GS274-0002-9	-	Skin Panel Assy Lower	KGC991-1094-31
GS274-0002-11	-	Skin Panel Assy Lower	KGC991-1094-32

(5) If PART B is done immediately following PART A, then go to paragraph 2.C.

(6) Remove the tags and close the circuit breakers that follow:

LOCATION	CB NO.	NAME	ZONE
ACPC	B6	STAB TRIM CH 1	252
CCBP	E5	STAB TRIM CH 2	222

(7) On the ELECTRICAL control panel, installed on the overhead panel, set the BATT MASTER switch to ON.

- (8) On the EMS CDU, set the circuit breakers that follow to IN:

SYSTEM NAME	CIRCUIT BREAKER NAME	BUS NAME
FLT CONTROLS	RUDDER TRIM	DC ESS
FLT CONTROLS	P FEEL/RUD LIM 1	DC 1
FLT CONTROLS	P FEEL/RUD LIM 2	DC ESS
LIGHTS	LOGO LTS	AC 4
LIGHTS	OVHD 1 INTG LTS	BATT
LIGHTS	OVHD 2 INTG LTS	DC 1

- (9) On the ELECTRICAL control panel, set the BATT MASTER switch to OFF.

C. PART B: Modification – Addition of Inter Pitching of Rivets

- (1) Remove the lower trailing-edge access-panels that follow. Refer to TASK 55-10-17-000-802 for the removal procedure.

IDENTIFICATION CODE LEFT/RIGHT	TYPE OF ACCESS
352AB / 362AB	Access Panel
352BB / 362BB	Access Panel
352CB / 362CB	Access Panel
352DB / 362DB	Access Panel
352EB / 362EB	Access Panel

- (2) Remove the upper trailing-edge access-panels that follow. Refer to TASK 55-10-17-000-803 for the removal procedure.

IDENTIFICATION CODE LEFT/RIGHT	TYPE OF ACCESS
352AT / 362AT	Access Panel
352BT / 362BT	Access Panel
352CT / 362CT	Access Panel

G L O B A L E X P R E S S[®]

MODEL BD-700-1A10

CAUTION: WHEN DRILLING ANY HOLES, MAKE SURE NOT TO PENETRATE ANY COMPONENTS THAT MAY BE LOCATED ON THE OTHER SIDE.

- (3) Do the modification to the nutplate assemblies as given in the Kit Drawing KGC991-1098.

NOTE: Cold bond nutplates strip KGC991-1098-25 using epoxy EA9345 A/B or EA9309.3 A/B. Refer to TASK 51-21-53-340-801.

- (4) Remove the tags and close the circuit breakers that follow:

LOCATION	CB NO.	NAME	ZONE
ACPC	B6	STAB TRIM CH 1	252
CCBP	E5	STAB TRIM CH 2	222

- (5) In the flight compartment, on the ELECTRICAL control panel, set the BATT MASTER switch to ON.
- (6) In the flight compartment, on the EMS CDU, set the circuit breakers that follow to IN:

SYSTEM NAME	CIRCUIT BREAKER NAME	BUS NAME
FLT CONTROLS	RUDDER TRIM	DC ESS
FLT CONTROLS	P FEEL/RUD LIM 1	DC 1
FLT CONTROLS	P FEEL/RUD LIM 2	DC ESS
LIGHTS	LOGO LTS	AC 4
LIGHTS	OVHD 1 INTG LTS	BATT
LIGHTS	OVHD 2 INTG LTS	DC 1

- (7) In the flight compartment, on the ELECTRICAL control panel, set the BATT MASTER switch to OFF.

G L O B A L E X P R E S S[®]
MODEL BD-700-1A10

D. Close-out

- (1) Remove all tools, equipment and unwanted materials from the aircraft.
- (2) For PART A, install the lower trailing-edge access-panels that follow:

IDENTIFICATION CODE LEFT/RIGHT	TYPE OF ACCESS
352AB / 362AB	Access Panel
352BB / 362BB	Access Panel
352CB / 362CB	Access Panel
352EB / 362EB	Access Panel

- (3) Install the lower visor assembly (346JL / 346JR). Refer to TASK 55-10-05-400-810.
- (4) Install the lower aft mid fairing (346FL / 346FR). Refer to TASK 55-10-05-400-806.
- (5) For PART B, install the lower trailing-edge access-panels that follow:

IDENTIFICATION CODE LEFT/RIGHT	TYPE OF ACCESS
352AB / 362AB	Access Panel
352BB / 362BB	Access Panel
352CB / 362CB	Access Panel
352DB / 362DB	Access Panel
352EB / 362EB	Access Panel

- (6) Install the upper trailing-edge access-panels that follow:

IDENTIFICATION CODE LEFT/RIGHT	TYPE OF ACCESS
352AT / 362AT	Access Panel
352BT / 362BT	Access Panel
352CT / 362CT	Access Panel

E. Recording

You can do each PART of this Service Bulletin independently. When any PART of this Service Bulletin is completed, make an entry in the aircraft log and send the attached Incorporation Notice to Bombardier Aerospace, Business Aircraft Division.

3. MATERIAL INFORMATION

A. Kit

Kit 700K55-004 is necessary to do PART B of this Service Bulletin and contains the parts that follow:

NEW PART NO.	QTY	KEY WORD	USED PART NO.	INSTRUCTIONS - DISPOSITION
KGC991-1098-83	2	Nutplate Assy	-	-
CR4622CW-4-2	3	Blind Rivet	-	-
CR4622CW-4-3	121	Blind Rivet	-	-
CR4622CW-4-4	5	Blind Rivet	-	-
CR4622CW-4-5	35	Blind Rivet	-	-
CR4622CW-4-6	5	Blind Rivet	-	-
CR4622CW-4-11	15	Blind Rivet	-	-

NOTE: The actual quantity for some of the hardware contained in the kit can be greater than the amount shown in the table as these items are supplied in pre-packaged quantities.

B. Material

The materials that follow, or equivalent, are necessary to do this Service Bulletin. These can be purchased from a local supplier or from Business Aviation Services:

DESCRIPTION	PART No./NAME	SPECIFICATION	QUANTITY	SUPPLIER
Resin Laminating Epoxy	EA956 B/A or EPOCAST 50-A/9816	-	As Necessary	Code: A
Adhesive Epoxy	Hysol	EA 9345	As Necessary	Code: A
Adhesive Epoxy	Hysol	EA 9309.3 A/B	As Necessary	Code: A
Compound, Sealing	Proseal 870, Class B or C	MIL-PRF-81733 Type II or IV	As Necessary	Code: B

NOTE: Refer to the next table for each supplier's address listed by codes.

G L O B A L E X P R E S S ®
MODEL BD-700-1A10

SUPPLIERS ADDRESSES BY CODES	
<p>Code: A</p> <p>Dexter Aerospace 2850 Willow Pass Road Pittsburgh, CA 94565 USA Tel.: (925) 458-8211 Fax: (925) 458-8030</p>	<p>Code: B</p> <p>PRC-Desoto International 5430 San Fernando Road Glendale, CA 91203 USA Tel.: (972) 988-0376 or Tel.: (818) 549-7794</p>

GLOBAL EXPRESS®
MODEL BD-700-1A10

SB700-55-004-1094-C-S3-PL

DRAWN BY: F. RIBEIRO/A. CORREA CAGE CODE: 88308	SHEET 3	PL KGC991-1094 MODEL VERSION: 03 MODEL TYPE: MAST	REV -C
---	------------	---	-----------

P.O. Box 6087, Station Centre-ville
Montreal, Quebec, Canada H3C 3G9

BOMBARDIER
AEROSPACE

- NOTES:
1. 1 (ONE) KIT REQUIRED PER AIRCRAFT.
 2. SEAL HOLE PER BD700 SRM CHAPTER 51-34-08, USING FR3000 EPOXY COATING OR 50-A/9816 EPOCAST RESIN.
 3. IDENTIFY PARTS BY INK STAMPING PER BEST SHOP PRACTICES.

© 1998 Bombardier, Inc.

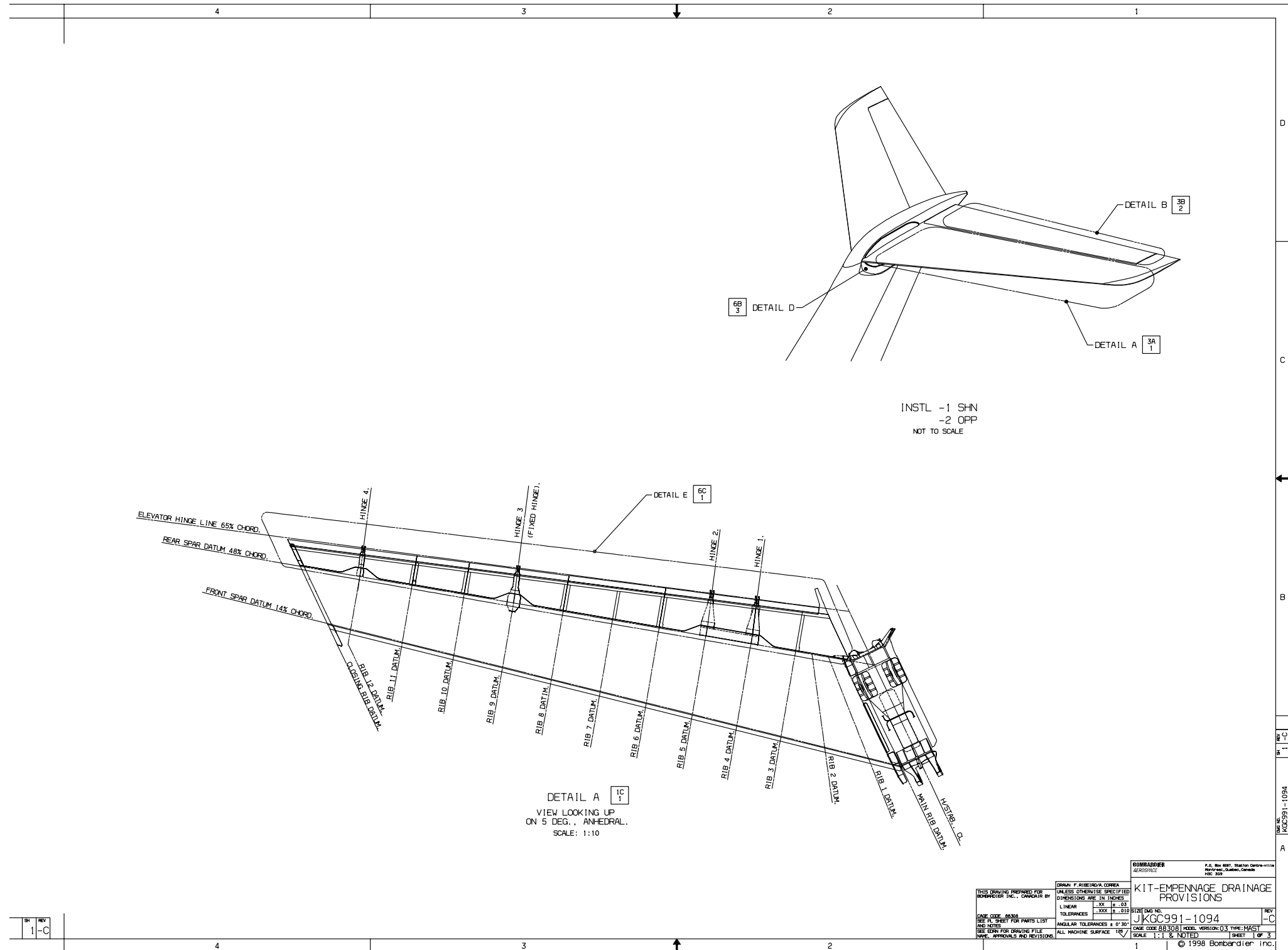
D.4094-2 CT4 REV. 1998-06

PL KGC991-1094
Kit – Empennage Drainage Provisions
(Sheet 3 of 3, Rev. C)

Jul 26/2002

700-55-004
Page 14 of 30

GLOBAL EXPRESS®
MODEL BD-700-1A10



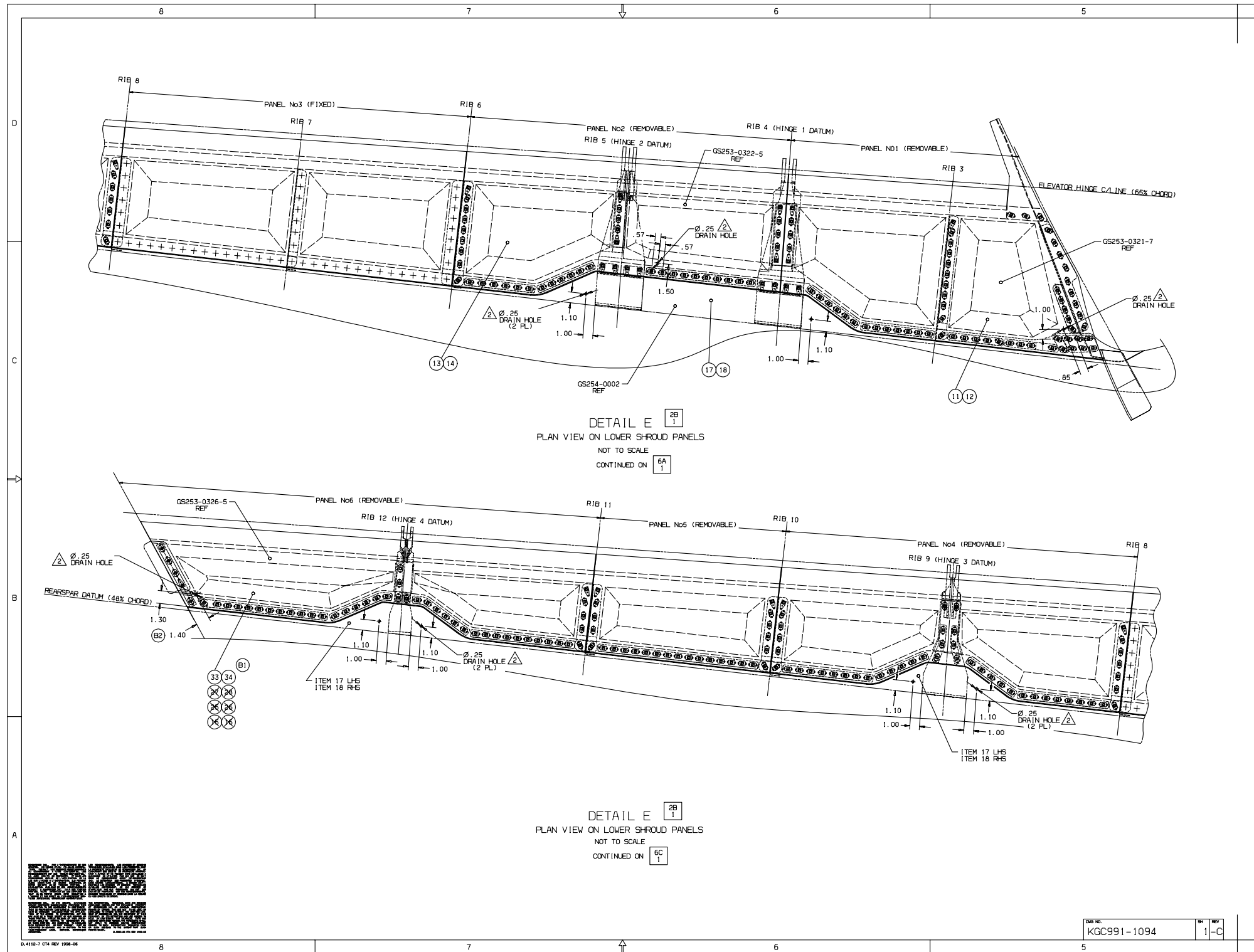
KGC991-1094
Kit – Empennage Drainage Provisions
(Sheet 1 of 3, Rev. C)

700-55-004
Page 15 of 30

Jul 26/2002

SB700-55-004-1094-C-S1-1

GLOBAL EXPRESS®
MODEL BD-700-1A10



KGC991-1094
Kit – Empennage Drainage Provisions
(Sheet 1 of 3, Rev. C - continued)

700-55-004
Page 16 of 30

Jul 26/2002

SB700-55-004-1094-C-S1-2

GLOBAL EXPRESS®
MODEL BD-700-1A10

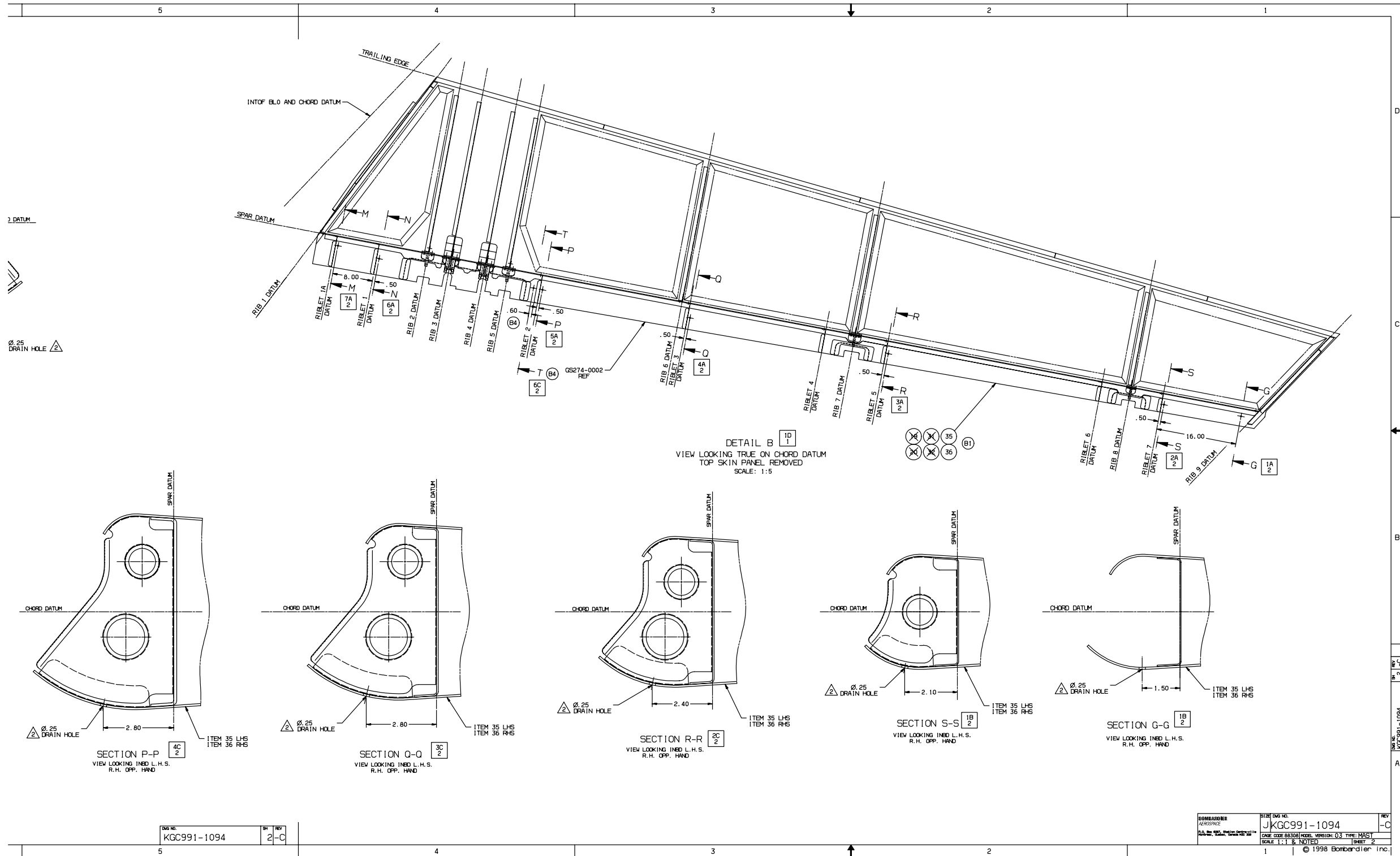


FIG NO.	REV
KGC991-1094	2-C

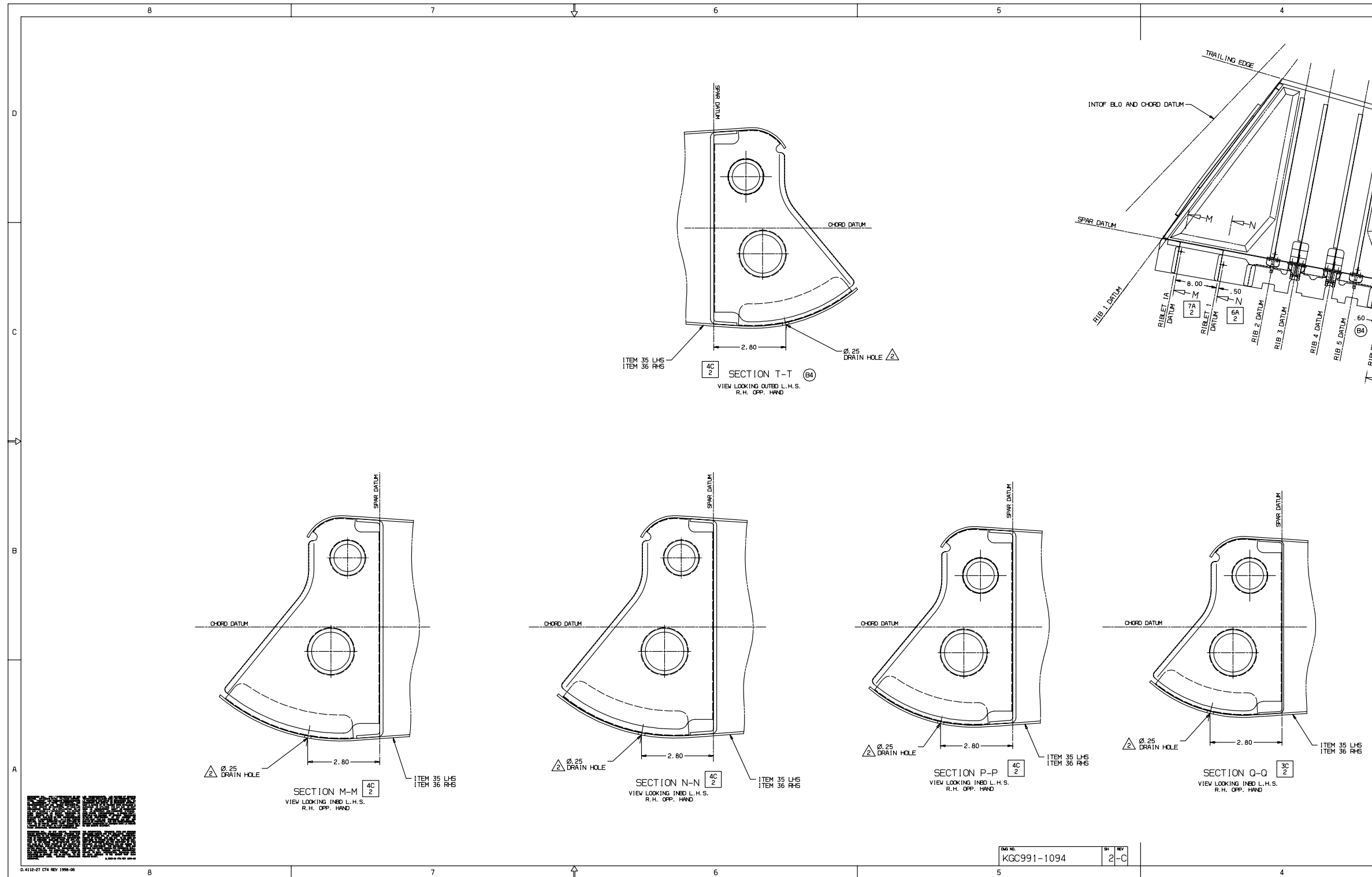
BOMBARDIER AEROSPACE	SIZE: 500 NO.
	JKGC991-1094
	DATE: 03/28/04 MODEL VERSION: 0.3 TYPE: MAST
	SCALE: 1:1 & NOTED SHEET: 2
	© 1998 Bombardier Inc.

KGC991-1094
Kit – Empennage Drainage Provisions
(Sheet 2 of 3, Rev. C)

700-55-004
Page 17 of 30

Jul 26/2002

GLOBAL EXPRESS®
MODEL BD-700-1A10



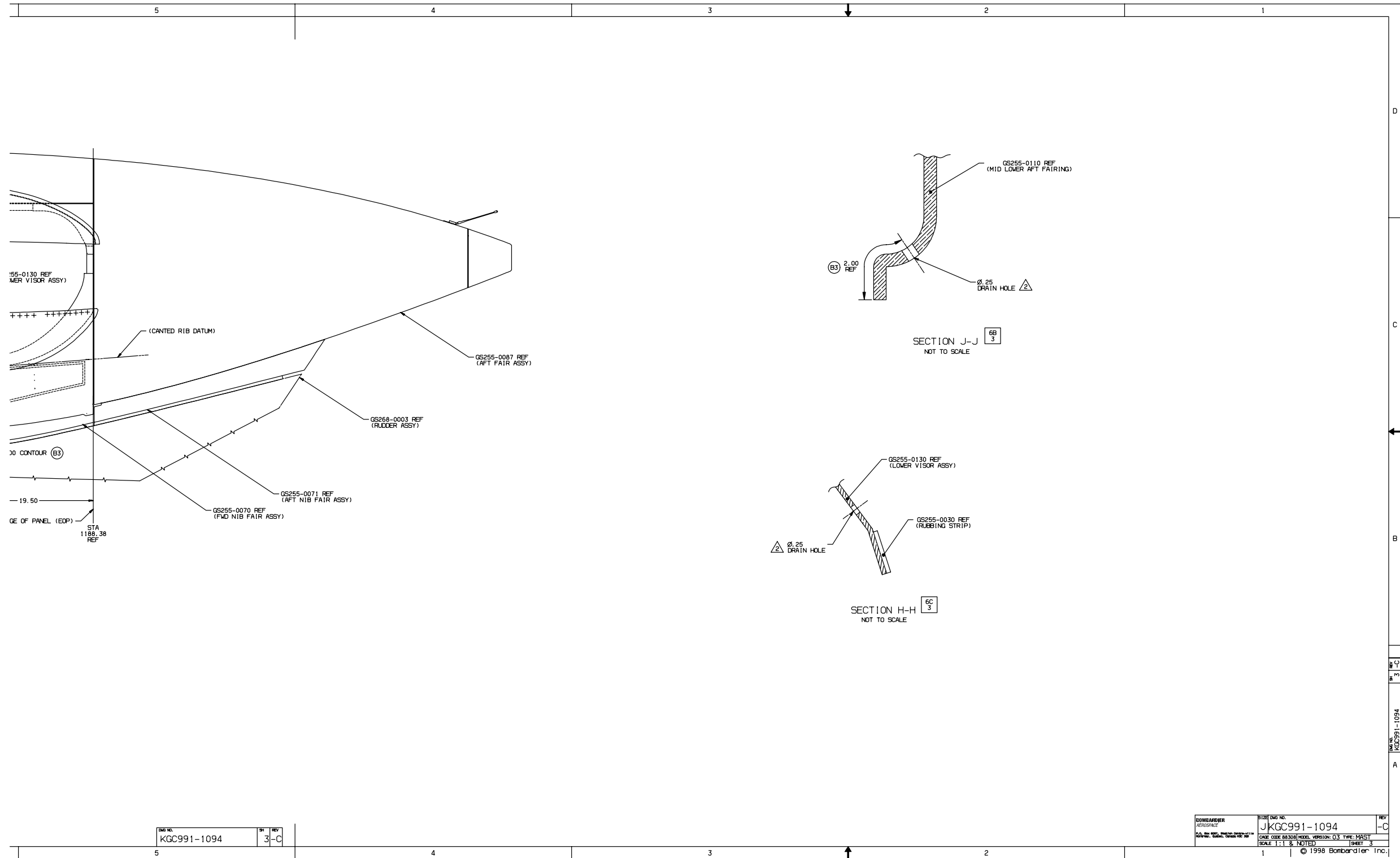
SB700-55-004-1094-C-S2-2

KGC991-1094
Kit – Empennage Drainage Provisions
(Sheet 2 of 3, Rev. C - continued)

Jul 26/2002

700-55-004
Page 18 of 30

GLOBAL EXPRESS®
MODEL BD-700-1A10

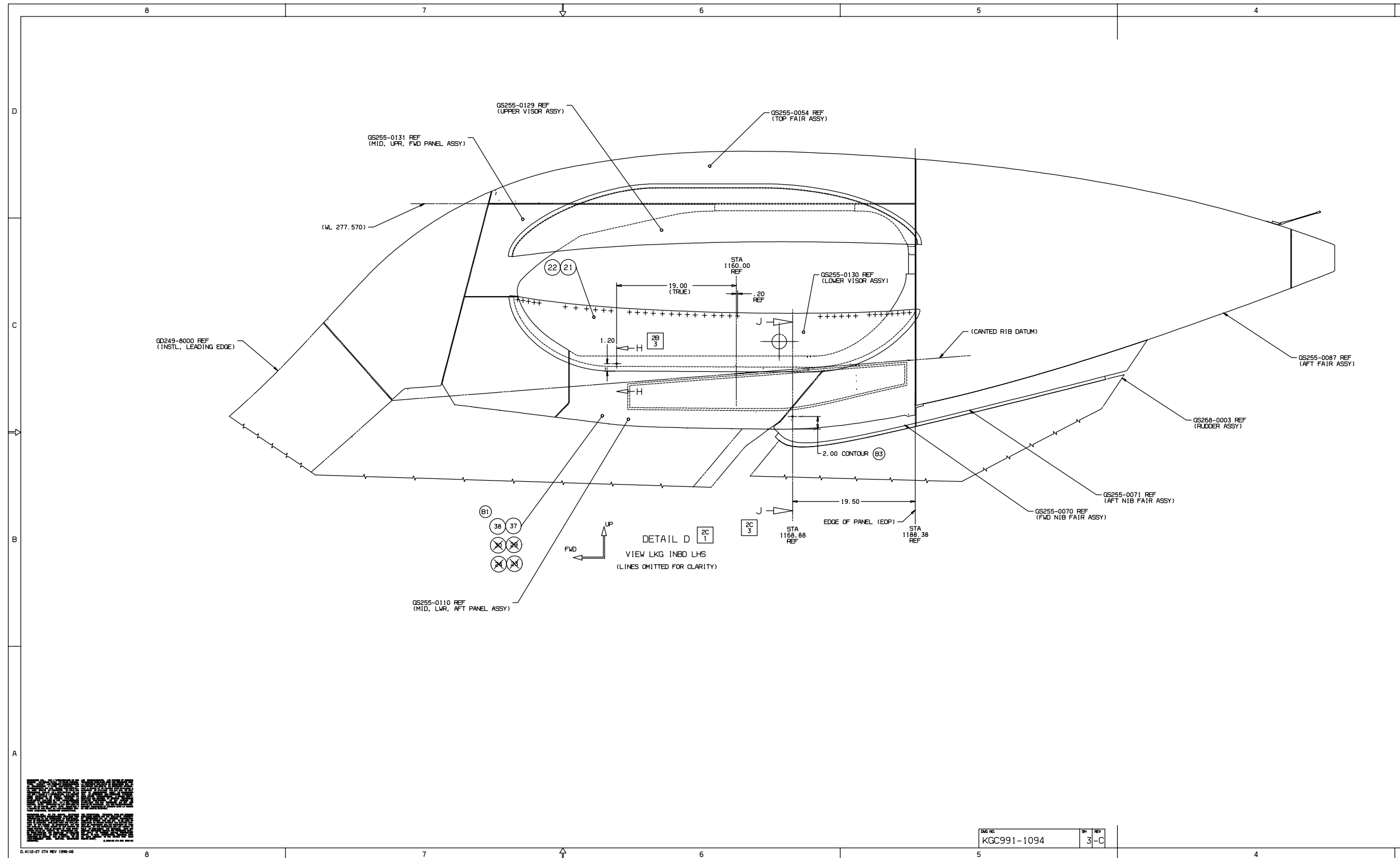


KGC991-1094
Kit – Empennage Drainage Provisions
(Sheet 3 of 3, Rev. C)

Jul 26/2002

700-55-004
Page 19 of 30

GLOBAL EXPRESS®
MODEL BD-700-1A10



REV. NO. KGC991-1094
REV. 3-C

SB700-55-004-1094-C-S3-2

KGC991-1094
Kit – Empennage Drainage Provisions
(Sheet 3 of 3, Rev. C - continued)

700-55-004
Page 20 of 30

Jul 26/2002

GLOBAL EXPRESS®
MODEL BD-700-1A10

SB700-55-004-1098-C-53-PL

FIND NO.		QTY REQ	CAGE CODE	PART, DASH OR IDENTIFYING NO.	DESCRIPTION	SIZE	MATERIAL SPEC	FINISH CODE	ZONE SHEET	ATA NUMBER	NOTE	DRAWN BY:		REV
												F	R	
												SHEET	PL KGC991-1098	-C
												3		
												MODEL VERSION: 04 MODEL TYPE: MAST		
1			88308	-2 INSTL	KIT-NUTPLATE INSTL									
2			88308	-4 INSTL	KIT-NUTPLATE INSTL									
11	1		88308	-11	NUTPLATE ASSY		M/F GS253-0341-1							
13	1		88308	-13	NUTPLATE ASSY									
15	1		88308	-15	NUTPLATE ASSY		M/F GS253-0340-1							
17	1		88308	-17	NUTPLATE ASSY		M/F GS253-0339-1							
19	1		88308	-19	NUTPLATE ASSY		M/F GS253-0180-1							
21	1		88308	-21	NUTPLATE ASSY		M/F GS253-0181-1							
23	2		88308	-23	NUTPLATE ASSY		M/F GS257-0068-3							
25	7		88308	-25	NUTPLATE ASSY		M/F GS257-0218-1							
27	1		88308	-27	NUTPLATE ASSY		M/F GS253-0182-1							
29	1		88308	-29	NUTPLATE ASSY		M/F GS257-0069-3							
31	1		88308	-31	NUTPLATE ASSY		M/F GS253-0228-1							
33	1		88308	-33	NUTPLATE ASSY		M/F GS253-0229-1							
35	1		88308	-35	NUTPLATE ASSY		M/F GS253-0230-1							
37	1		88308	-37	NUTPLATE ASSY		M/F GS253-0231-1							
39	1		88308	-39	NUTPLATE ASSY		M/F GS257-0114-3							
41	1		88308	-41	NUTPLATE ASSY		M/F GS253-0338-3							
43	1		88308	-43	NUTPLATE ASSY		M/F GS253-0342-1							
45	1		88308	-45	NUTPLATE ASSY		M/F GS253-0337-1							
47	1		88308	-47	NUTPLATE ASSY		M/F GS253-0336-1							
49	1		88308	-49	NUTPLATE ASSY		M/F GS253-0168-1							
51	1		88308	-51	NUTPLATE ASSY		M/F GS253-0169-1							
53	1		88308	-53	NUTPLATE ASSY		M/F GS253-0132-1							
55	1		88308	-55	NUTPLATE ASSY		M/F GS253-0133-1							
57	1		88308	-57	NUTPLATE ASSY		M/F GS253-0170-1							

D.4094-2 C14 REV. 1998-06

© 1998 Bombardier, Inc.

PL KGC991-1098
Kit - Gang Channel Instl, Shroud Panels, H/Stab
(Sheet 3 of 6, Rev. C)

Jul 26/2002

700-55-004
Page 23 of 30

GLOBAL EXPRESS®
MODEL BD-700-1A10

SB700-55-004-1098-C-56-PL

DRAWN BY: S. MONFETTE CAGE CODE 88308	SHEET 6 MODEL VERSION: 04	REV -C MODEL TYPE: MAST
---	---------------------------------	-------------------------------

P.O. Box 6087, Station Centre-ville
Montreal, Quebec, Canada H3C 3G9

BOMBARDIER
AEROSPACE

NOTES

1. 1 (ONE) KIT REQUIRED PER AIRCRAFT.
2. INTERPRET DIMENSIONS AND TOLERANCES PER ASME Y14.5-1994.
3. REMOVE AND DISCARD, FROM BOTH LH/RH, NUTPLATE TAPERED GS253-0344-1.
4. STANDARD MACHINING PER MPS 188-1. REMOVE ALL SHARP EDGES ±.015".
5. PENETRANT INSPECT PER ASTM E 1417, CLASS B.
6. FINISH CODE PER BD700 SRM CHAPTER 51-01-04.
7. ~~Ø~~ DRILL HOLE Ø.25 ±.004 TO BD700 SRM CHAPTER 51-41-04.
8. ~~∅~~ DRILL HOLE TO BD700 SRM CHAPTER 51-42-08 TO SUIT 1/8 RIVET.
9. FOR ALL UNBONDED & PARTIALLY UNBONDED NUTPLATE STRIPS, REAPPLY ADHESIVE EA9345 AS PER BD700 AMM CH. 51-22-00.
10. THRU NUTPLATE ASSY AND H/STAB STRUCTURE, EXCLUDING SHROUD PANELS.
11. INSTALL RIVETS PER BD700 SRM CHAPTER 51-42-08.
12. ~~WET ASSEMBLE (INCLUDING FASTENERS) PER BD700 SRM CHAPTER 51-23-04.~~
13. IDENTIFY PARTS BY INK STAMPING, PER BEST SHOP PRACTICES.
14. SPARE HARDWARE (ITEM 108 TO 113) 10% OF QUANTITY IS INCLUDED.
15. WET INSTALL FASTENERS IN GRAPHITE AS PER BD700 AMM CH.51-23-00.
16. IT IS PERMISSIBLE TO USE CR2662CW RIVETS IN LIEU OF CR4622CW.
17. COLD BOND NUTPLATES STRIP ITEM -25 USING EPOXY EA9345 A/B OR EA9309.3 A/B AS PER BD700 AMM CH. 51-21-53.

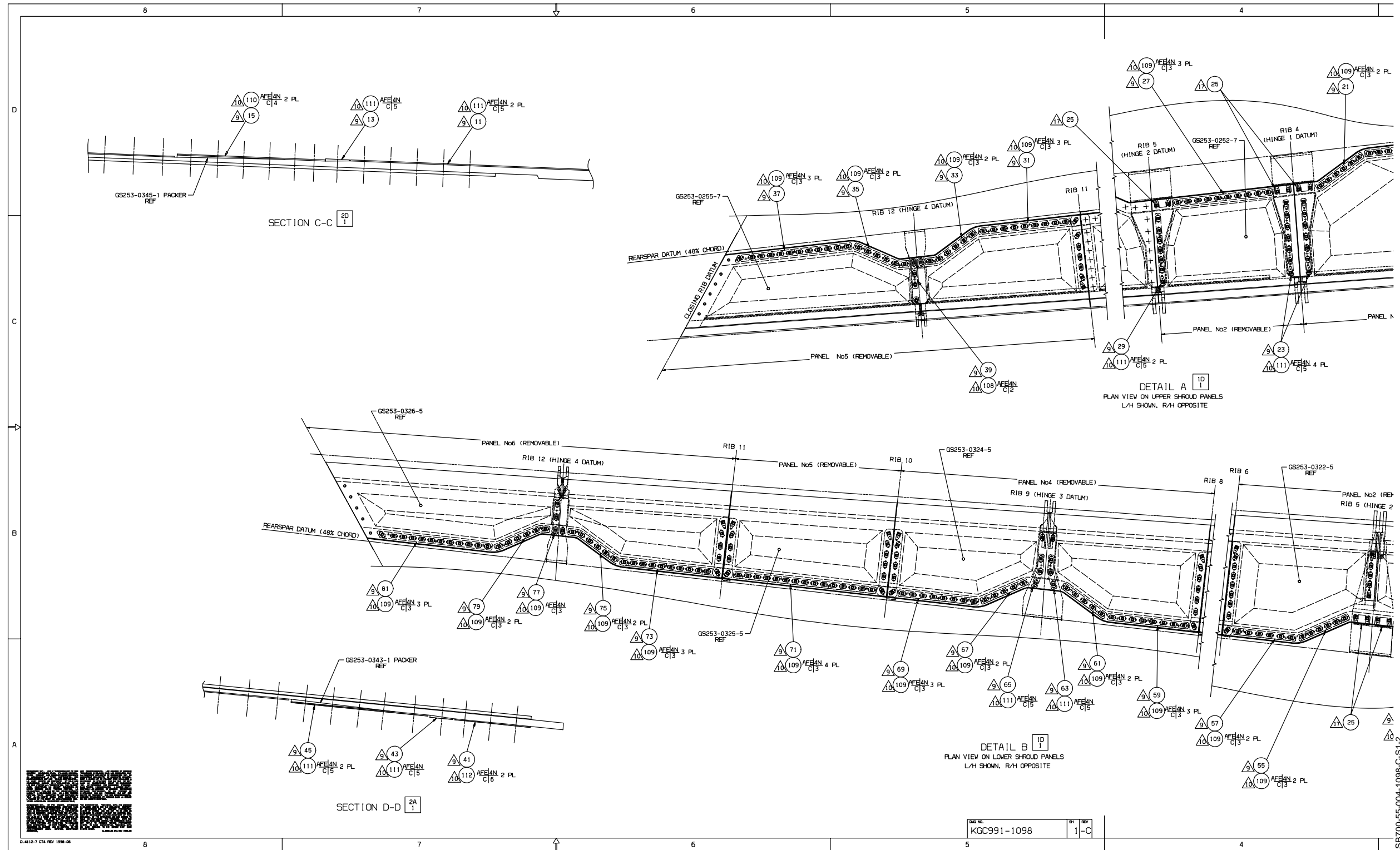
© 1998 Bombardier, Inc.

D.4094-2 CT4 REV. 1998-06

PL KGC991-1098

Kit - Gang Channel Instl, Shroud Panels, H/Stab
(Sheet 6 of 6, Rev. C)

GLOBAL EXPRESS®
MODEL BD-700-1A10



KGC991-1098
Kit - Gang Channel Instl, Shroud Panels, H/Stab
(Sheet 1 of 2, Rev. C - continued)

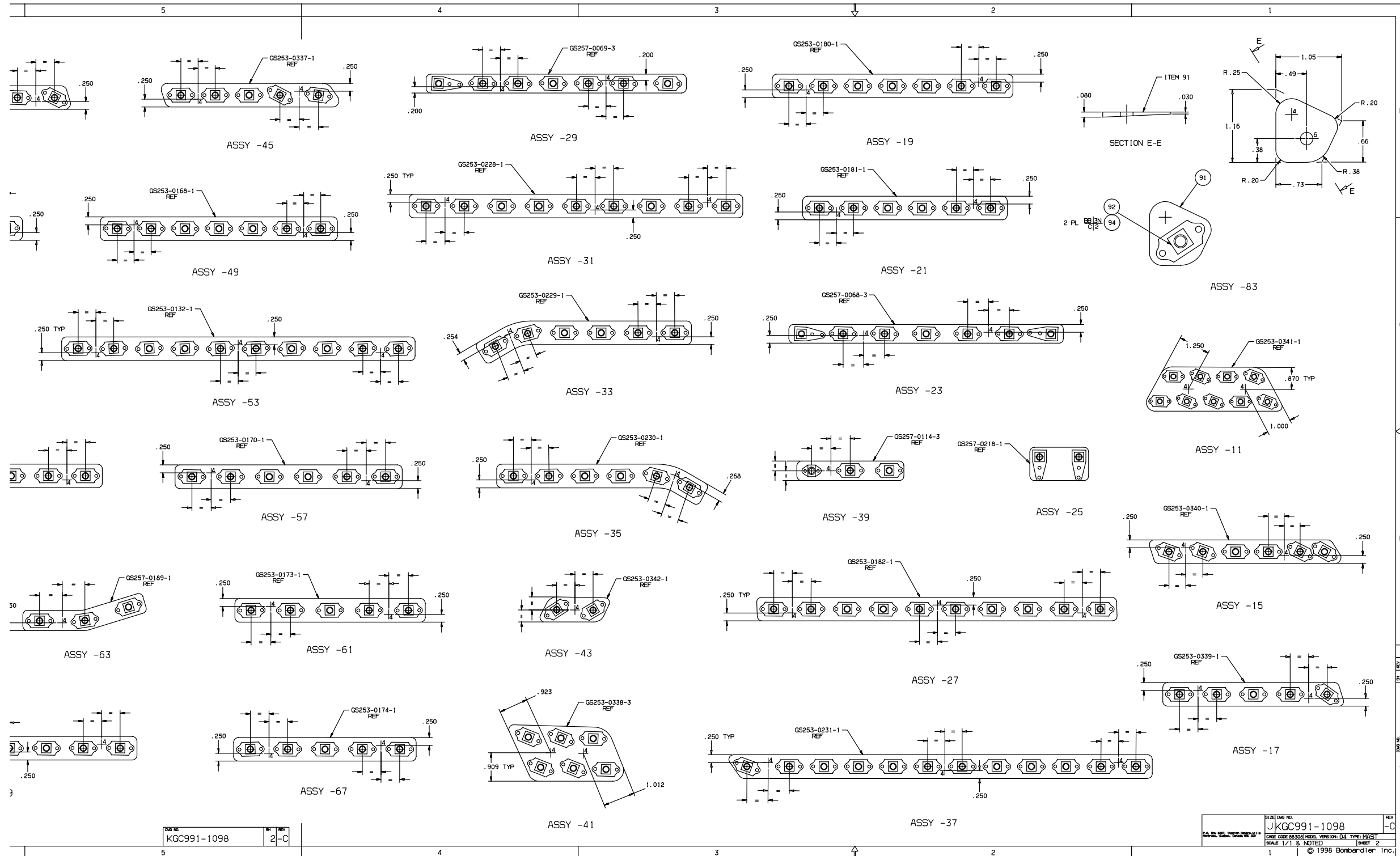
700-55-004
Page 28 of 30

Jul 26/2002

DWG NO. KGC991-1098
REV. 1-C

SB700-55-004-1098-C-S1-2

GLOBAL EXPRESS®
MODEL BD-700-1A10

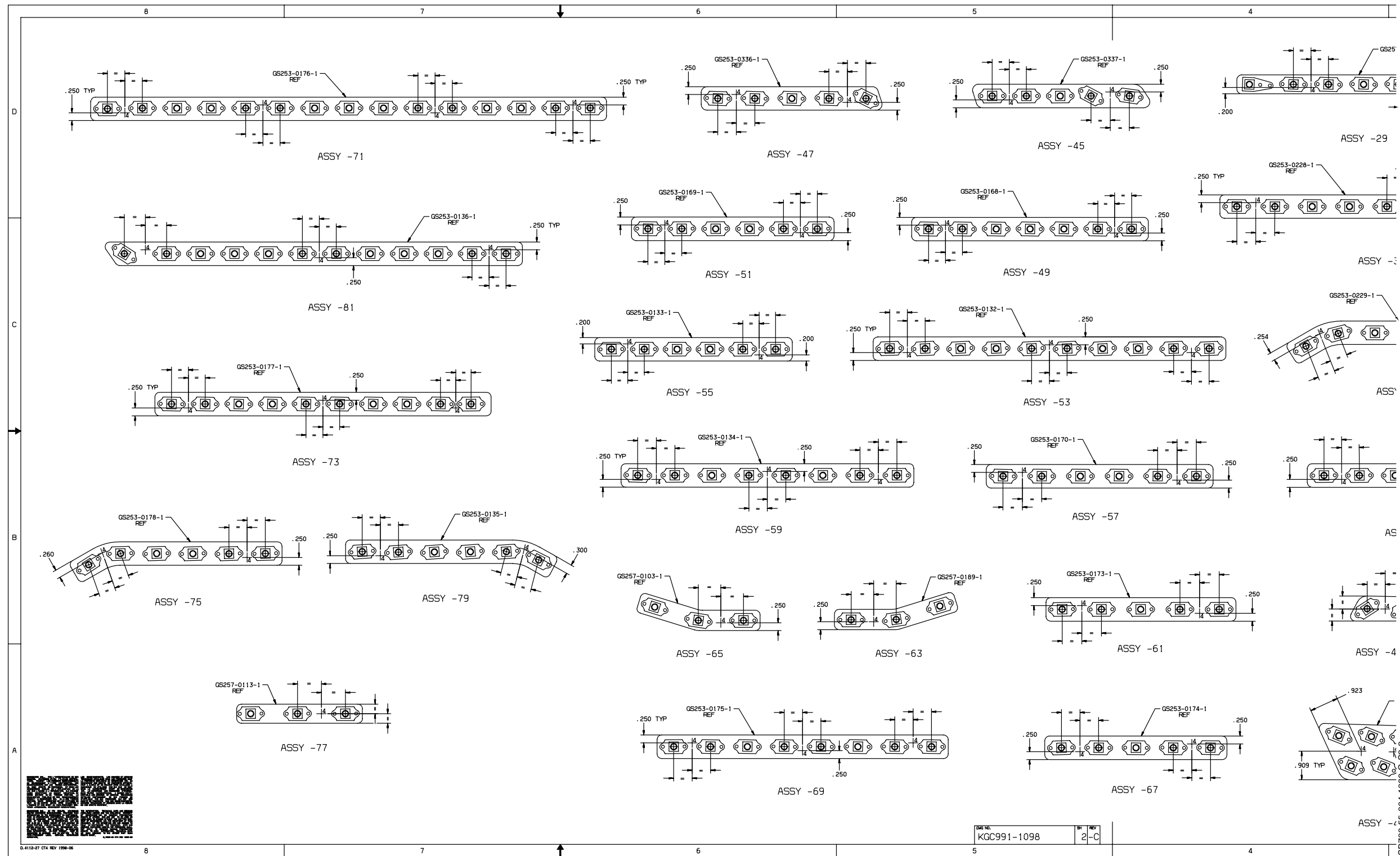


KGC991-1098
Kit - Gang Channel Instl, Shroud Panels, H/Stab
(Sheet 2 of 2, Rev. C)

700-55-004
Page 29 of 30

Jul 26/2002

GLOBAL EXPRESS®
MODEL BD-700-1A10



KGC991-1098
Kit - Gang Channel Instl, Shroud Panels, H/Stab
(Sheet 2 of 2, Rev. C - continued)

700-55-004
Page 30 of 30

Jul 26/2002

SB700-55-004-1098-C-SZ-2

SERVICE BULLETIN EVALUATION FORM
(YOUR IDEAS WILL HELP US PROVIDE BETTER BULLETINS)

SERVICE BULLETIN: 700-55-004 **ISSUE:** Basic **DATED:** Jul 26/2002

TITLE: Modification – Horizontal Stabilizer – Addition of Drainage Holes to Eliminate Water Accumulation and Addition of Rivets on the Access Panels Nutplate Assemblies

- | | POOR | FAIR | GOOD | VERY GOOD | EXCELLENT |
|--|--------------------------|--------------------------|--------------------------|--------------------------|--------------------------|
| <ul style="list-style-type: none"> • How easy is the bulletin to understand?
Comments: | <input type="checkbox"/> | <input type="checkbox"/> | <input type="checkbox"/> | <input type="checkbox"/> | <input type="checkbox"/> |
| <ul style="list-style-type: none"> • Does the bulletin tell you all you need to know about the job?
Comments: | <input type="checkbox"/> | <input type="checkbox"/> | <input type="checkbox"/> | <input type="checkbox"/> | <input type="checkbox"/> |
| <ul style="list-style-type: none"> • Do you think the bulletin conveys the best way to do the job?
Comments: | <input type="checkbox"/> | <input type="checkbox"/> | <input type="checkbox"/> | <input type="checkbox"/> | <input type="checkbox"/> |
| <ul style="list-style-type: none"> • How realistic are the man-hour estimates?
Comments: | <input type="checkbox"/> | <input type="checkbox"/> | <input type="checkbox"/> | <input type="checkbox"/> | <input type="checkbox"/> |
| <ul style="list-style-type: none"> • What is your appreciation of the illustration(s), figure(s), and/or kit drawing(s)?
Comments: | <input type="checkbox"/> | <input type="checkbox"/> | <input type="checkbox"/> | <input type="checkbox"/> | <input type="checkbox"/> |

FORWARD ALL INQUIRIES TO:	PLEASE SUPPLY US WITH THE FOLLOWING DATA:
NAME: Jean-Pierre Martineau	OPERATOR: _____
TELEPHONE: (514) 855-5000, ext.: 50626	AIRCRAFT SERIAL NO.: _____
FACSIMILE: (514) 855-7894	TELEPHONE: _____
	FACSIMILE: _____
	NAME (Please print) _____

UPON COMPLETION OF THIS EVALUATION FORM, PLEASE FOLD, AND RETURN



Bombardier Aerospace
Business Aircraft
P.O. Box 6087, Station Centre-ville
Montréal, Québec, Canada H3C 3G9

Attn: Supervisor, Service Bulletin Group
Department 631



SERVICE BULLETIN INCORPORATION SHEET

Upon completion of Service Bulletin(s), please fill-in, fold and return/or fax to
514-855-8798
Attention: Dept. 051

Service Bulletin Number	Rev.	* Parts Completed	Further Action Required	
			YES	NO
_____	_____	_____	<input type="checkbox"/>	<input type="checkbox"/>
_____	_____	_____	<input type="checkbox"/>	<input type="checkbox"/>
_____	_____	_____	<input type="checkbox"/>	<input type="checkbox"/>
_____	_____	_____	<input type="checkbox"/>	<input type="checkbox"/>
_____	_____	_____	<input type="checkbox"/>	<input type="checkbox"/>
_____	_____	_____	<input type="checkbox"/>	<input type="checkbox"/>

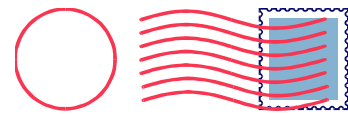
* **NOTES:** 1. Where the Service Bulletin is divided into a number of parts (e.g., Parts A, B, C, D, etc.) which can be carried out separately, indicate only those parts completed at this time.

2. For repetitive checks (usually PART A) only the initial check should be reported unless otherwise stated in the Service Bulletin.

3. When more than one part is carried out at the same time, each part should be reported.

Is the aircraft enrolled on the CIMMS computerized maintenance program?	Yes	No
	<input type="checkbox"/>	<input type="checkbox"/>

Aircraft Serial No. _____	Aircraft Reg. No. _____
Airframe Landings _____	Airframe Hours _____
Date of Incorporation _____	Service Order No. _____
Facility & Location Incorporation Bulletin _____	
SIGNED: _____	DATE: _____



Bombardier Aerospace
Business Aircraft
P.O. Box 6087, Station Centre-ville
Montréal, Québec, Canada H3C 3G9

Attn: Maintenance Engineering
Department 051-CA
