

Bombardier Inc.
P.O. Box 6087, Station Centre-Ville
Montréal, Québec,
Canada H3C 3G9
Telephone 1(514) 855-5000
Fax 1(514) 855-7469
<http://www.businessair.support.bombardier.com>

Z 2

ADVISORY WIRE BD700T-0015

DATE: 15 May, 2000	TIME/HEURE:	PAGE 1 OF 5
ADDRESS TO: DESTINATAIRE:		A/C:
FAX NUMBER: NUMÉRO DE FAX:		
FROM/DE: Bombardier Aerospace, Business Aircraft		
ADVISORY WIRE REFERENCE NO: BD700T-0015 SUBJECT: Central Maintenance System - PMAT Shutdown Procedure EFFECTIVITY: BD-700-1A10 (9005 and subs)		
Si vous ne recevez pas toutes les pages, veuillez rappeler (514)-855-7469 If you do not receive all the pages, call (514) 855-7469 If you require technical information concerning this wire, please call your Field Service Representative.		

ADVISORY WIRE BD700T-0015

DATE: 15 May, 2000	TIME/HEURE:	PAGE 2 OF 5
<p>1.0 INTRODUCTION</p> <p>There have been reports from the field that when starting CAIMS, initialization errors occur and in some cases functions involving the RS-232 port do not work. Further investigation revealed that many operators do not shutdown the PMAT correctly. The following explains the shutdown procedures of the PMAT for all Global Express aircraft. The procedures must be followed to avoid corrupting files and to avoid damaging the RS-232 port used by the CAIMS software.</p> <p>2.0 PMAT SHUTDOWN</p> <p>When shutting down the PMAT, never press the “Green” button while power is on and applications are running and never abort an Auto Shutdown. The two methods of shutting down the PMAT are:</p> <ul style="list-style-type: none">• Auto Shutdown• Manual Shutdown <p>2.1 AUTO SHUTDOWN</p> <p>During normal operation when the aircraft returns from a flight and the PMAT is unattended, the PMAT will cater Auto Shutdown mode when power is lost to all DAU channels (CAIMS 6.0 only) or DAU channels B (CAIMS 6.1 and subsequent versions). The Auto Shutdown routine will close all the opened applications and will shut down the PMAT safely. Because the Auto Shutdown is done on the battery power, it takes approximately 1.5 hours to recharge the PMAT internal battery the next time the PMAT is powered.</p>		

ADVISORY WIRE BD700T-0015

DATE: 15 May, 2000	TIME/HEURE:	PAGE 3 OF 5
---------------------------	--------------------	---------------------------

2.2 MANUAL SHUTDOWN

When doing maintenance on the aircraft, it is strongly recommended to always do a Manual Shutdown before removing aircraft power. The Manual Shutdown method prevents the battery from depleting such as during an Auto Shutdown. If the internal battery power is depleted, file corruption may happen at the next PMAT Auto Shutdown.

To Shutdown the PMAT with aircraft power ON, do the following:

- A) Close all opened windows.

Example: CAIMS - Exit. See Figure 1.



Figure 1 CAIMS - Exit

ADVISORY WIRE BD700T-0015

DATE: 15 May, 2000	TIME/HEURE:	PAGE 4 OF 5
---------------------------	--------------------	---------------------------

B) In the task bar, select "CAIMS DLL - Terminate Mgr". See Figure 2.

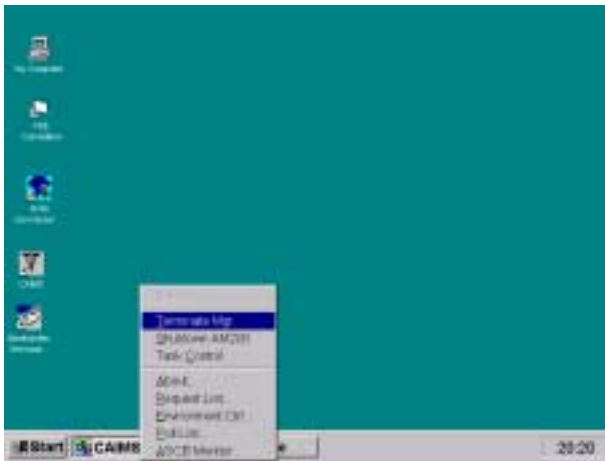


Figure 2 CAIMS DLL - Terminate Mgr.

C) In the task bar, select "Start - Shut Down...". See Figure 3.

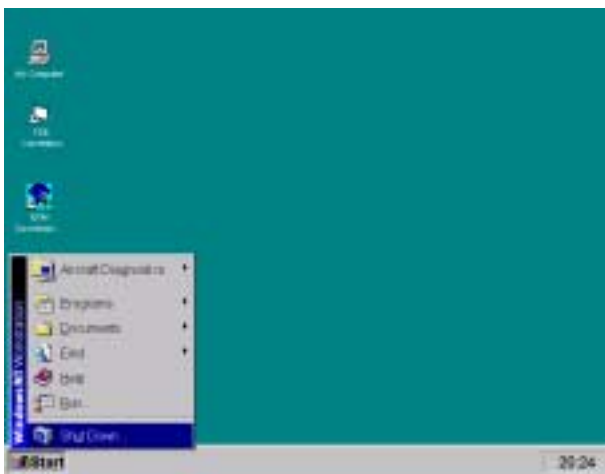


Figure 3 Start - Shut Down

ADVISORY WIRE BD700T-0015

DATE: 15 May, 2000	TIME/HEURE:	PAGE 5 OF 5
<p>D) In the “Shut Down Windows” window. See Figure 4.</p> <ul style="list-style-type: none">i) Select “Shut down the computer?”ii) Select “Yes” <div data-bbox="451 856 799 1079" data-label="Image"></div> <p style="text-align: center;">Figure 4 Shut Down Window</p> <p>E) Wait until PMAT indicates “It is now safe to turn off your computer”.</p> <p>F) Remove PMAT power by setting CAIMS PMAT LAPTOP circuit breaker to “OUT” on the EMS CDU, or by removing external AC power from aircraft.</p> <p>G) When you are certain that the power is OFF, press the green button at the upper left corner of the PMAT, if the green button is accessible. This will shutdown the PMAT immediately and will save the battery charge.</p> <p>Note: If the green button is not accessible, the PMAT will shut down on the battery approximately 2.5 minutes after the power is removed.</p>		

ADVISORY WIRE BD700T-0015

DATE: 15 May, 2000	TIME/HEURE:	PAGE 6 OF 6
<p>3.0 CONCLUSION</p> <p>Since the PMAT is based on a commercial off-the-shelf hardware platform and Windows NT operating system, the impact of removing the power while applications are running is the same as for any similar computer. Many efforts have been deployed in CAIMS software 6.1 as well as in the upcoming CAIMS 7.1 to reduce the risks of damaging the PMAT when an improper shut down is done but operators are urged to follow these procedures in order to eliminate the risk altogether. The Aircraft Maintenance Manual Temporary Revision TR45-5 will be released shortly to include the procedure specified in this Advisory Wire.</p>		