

# SERVICE BULLETIN SUMMARY

This Service Bulletin is available at:

[www.cic.bombardier.com](http://www.cic.bombardier.com)

MODEL BD-700-1A10 (BD-700)

ATA 52-31

DOORS

**MODIFICATION – BAGGAGE DOOR –  
 INTRODUCTION OF NEW INTERNAL DOOR “T” HANDLE**

The information below is provided for your reference. For full details, please see corresponding paragraph contained within this bulletin.

<b>OPTIONAL</b> CUSTOMER CONVENIENCE/PREFERENCE	<b>COMPLIANCE TIME</b> Not applicable		
<b>EFFECTIVITY:</b> A/C Serial No. <b>9002</b> to <b>9126</b> and <b>9128</b> to <b>9499</b>			
<b>MANPOWER:</b> 4.5 man-hours			
<b>KITS and/or PARTS</b>	YES	<input checked="" type="checkbox"/>	NO <input type="checkbox"/>
<b>TOOLING/GSE</b>	YES	<input type="checkbox"/>	NO <input checked="" type="checkbox"/>
<b>PLANNING INFORMATION:</b> See important information at the start of Paragraph 1.	YES	<input type="checkbox"/>	NO <input checked="" type="checkbox"/>
<b>DEDICATED SCHEDULE</b>	YES	<input type="checkbox"/>	NO <input checked="" type="checkbox"/>
<b>PREREQUISITE SERVICE BULLETINS:</b> N/A			

To place an order for parts or kits, please call Bombardier Parts Logistics at:

514-855-2999 or 1-866-538-1247

# SERVICE BULLETIN

This Service Bulletin is available at:  
[www.cic.bombardier.com](http://www.cic.bombardier.com)

MODEL BD-700-1A10 (BD-700)

ATA 52-31

DOORS

## MODIFICATION – BAGGAGE DOOR – INTRODUCTION OF NEW INTERNAL DOOR “T” HANDLE

### 1. PLANNING INFORMATION

#### A. Effectivity

BD-700-1A10 aircraft, Serial No. **9002** to **9126** and **9128** to **9499**.

NOTE: The instructions given in this Service Bulletin are only applicable to the systems and parts installed at the time of delivery of the aircraft or as changed by Bombardier Aerospace Service Bulletin(s).

Before you do this bulletin, examine all STC, STA or equivalent action changes to make sure that this bulletin can be completed.

#### B. Reason

It was observed that excessive force was required to pull or push the inner baggage bay door handle during the opening and closing sequence. The excessive side load on the center rod of the current L-shape handle when attempting to open, causes the handle to jam. Also, the inside door handle is too close to the interior finishing panel, making it difficult to open the door without pinching hands on the finishing panel. The introduced design changes incorporate a longer spindle shaft to provide more room between the finishing panel and hands. Also, a T-handle is added to be able to apply a more even force when opening or closing to eliminate the jamming condition.

Refer to applicable governmental agency regulations and requirements and make sure that the work described in this Service Bulletin is performed in compliance with manufacturer's recommendations and/or acceptable industry standards.

This document is proprietary to Bombardier Inc. and/or its affiliates and may not be reproduced or copied in any form or by any means without the prior written consent of Bombardier Inc. and/or its affiliates.

© 2008 Bombardier Inc. All rights reserved  
Challenger\*, Global Express\*, Global Express<sup>XRS</sup>\*, Global 5000\*, Learjet\* are Trademarks of Bombardier Inc.

### **C. Description**

This Service Bulletin gives instructions to:

- Get access to the baggage bay door,
- Modify the interior finishing on the door,
- Remove the old L-shaped handle,
- Install a new T-shaped handle, and
- Do the necessary tests to make sure that the system operates correctly.

### **D. Compliance**

Optional – Customer Convenience/Preference

### **E. Approval**

The technical content of this Service Bulletin has been approved under the authority of Transport Canada Civil Aviation (TCCA) Design Approval Organization (DAO) No. DAO #93-Q-02.

- NOTES:**
1. The technical content of this Service Bulletin is accepted by the FAA under the Canada/USA bilateral Aviation Safety Agreement.
  2. The technical content of this Service Bulletin is accepted by the JAA and by EASA in accordance with established procedures.

### **F. Manpower**

- NOTES:**
1. The man-hours given are estimates to help you schedule the tasks given in this bulletin. The estimates are for direct labor performed by an experienced crew and do not include the time for familiarization, planning, aircraft preparation in hangar such as towing and positioning of scaffolds, removal of interior furnishings, repainting, supervision and inspection.

For more information related to the manpower estimates, refer to SB 700-00-002.

2. This Service Bulletin may require consumable materials that have specific curing times (refer to Paragraph 3.). The accumulated curing time is not included in the labor estimates and should be considered for planning purposes before you schedule this Service Bulletin.

4.5 man-hours are necessary to do this modification.

Bombardier Aerospace does not pay for the labor to do this modification.

**G. Material – Cost and Availability**

Kit 700K52-034 is necessary to do this modification. Only the U.S. domestic price is shown:

KIT NO.	PRICE
700K52-034	\$5,789.49

The above price can change. For the price outside of the U.S., refer to the last applicable Spare Parts Price Catalog. This data is also available from Bombardier Business Aviation Services (BBAS) at the addresses shown in the catalog.

19 kits were available when this Service Bulletin was released. Sufficient kits will be kept for the estimated amount of orders.

Bombardier Aerospace does not pay for the kit to do this modification.

**H. Tooling**

No equipment or special tools are necessary.

**I. Weight and Balance**

No change.

**J. Electrical Load Data**

No change.

**K. References**

- Bombardier Aerospace, Modification Summary, R700T400290, Rev. C-1.
- Bombardier Aerospace, Modification Summary, 700T97356, Rev. A.
- Bombardier Aerospace, Kit Drawing, KGC991-1335 Rev. A.
- Bombardier Aerospace, Drawing, GD322-3900 Rev. D, (Reference Only).
- Global Express BD-700 Aircraft Maintenance Manual, Chapters 6 and 20.
- Global Express XRS BD-700 Aircraft Maintenance Manual, Chapters 6 and 20.
- Global BD-700 Structural Repair Manual (SRM), Chapter 20.
- Vendor Service Bulletin, Hartwell, HA236-52-01 (attached).

**L. Other Publications Affected**

- Global Express BD-700 Aircraft Illustrated Parts Catalog (AIPC), Chapter 51.
- Global Express XRS BD-700 Aircraft Illustrated Parts Catalog (AIPC), Chapter 51.

**M. Equivalent Service Bulletin**

For the Global 5000 BD-700-1A11 aircraft, use SB 700-1A11-52-011.

## 2. ACCOMPLISHMENT INSTRUCTIONS

NOTES: 1. All TASKs referenced in the procedures that follow are from the Global Express or the Global Express XRS BD-700 Aircraft Maintenance Manual, unless otherwise specified.

2. All references made to zones, access panels and/or doors, are from the Global Express or the Global Express XRS BD-700 Aircraft Maintenance Manual, Chapter 6.

### A. Modification – Rework Baggage Door to Accommodate New Inboard Handle

(1) Gain access to the baggage bay door.

NOTE: To gain access you need to remove the large and small interior panels in order to access the door handle.

(2) Remove and discard the old L-shaped door handle spindle. Refer to Vendor Service Bulletin HA236-52-01 for instructions.

(3) Rework the inner door panel as per Kit Drawing KGC991-1335.

(4) Reidentify the reworked door handle cover GD742-3012 as GC991-1335-15.

(5) Install the new T-shaped door handle and spindle. Refer to Vendor Service Bulletin HA236-52-01 for instructions.

NOTE: When torquing screws on the door interior liner, do not use excessive force. The attaching nut plates are only bonded to the door structure.

### B. Testing

Rotate the handle to ensure that the handle moves freely and does not jam.

### C. Close-out

Remove all tools, equipment and unwanted materials from the aircraft.

### D. Recording

When this Service Bulletin is completed, make an entry in the aircraft log and send the attached Incorporation Notice to Bombardier Business Aircraft Customer Services (BBACS).

### 3. MATERIAL INFORMATION

#### A. Kit

Kit 700K52-034 is necessary to do this Service Bulletin and contains the parts that follow:

NEW PART NO.	QTY	ITEM	USED PART NO.	INSTRUCTIONS - DISPOSITION
GC781-1001-3	1	Placard Assy	-	-
GC781-1002-3	1	Placard Assy	-	-
GD972-0001-73	1	PUSH Decal	-	-
HA236-3K4156	1	Handle Latch Kit	-	-
KGC991-1335-17	1	Decal to Open Baggage Door	-	-

- NOTES:
1. In case of discrepancy between this list and the "Service Bulletin Kit Parts List" contained in the respective kit, then the latter list prevails.
  2. The actual quantity for some of the hardware contained in the kit can be greater than the amount shown in the table as these items are supplied in pre-packaged quantities.

#### B. Parts

No parts required.

**C. Material**

The consumable materials that follow, or equivalent, are necessary to do this Service Bulletin. These can be purchased from a local supplier. Bombardier Aerospace does not pay for the consumable materials listed below.

<b>DESCRIPTION</b>	<b>PART No./NAME</b>	<b>SPECIFICATION</b>	<b>QUANTIT Y</b>	<b>SUPPLIER (See Note)</b>
Fluid-resistant Epoxy Primer	Primer	BAMS 565-001, Grade A	As Necessary	Code A
Adhesive (CT: 4 min.)	-	EC-1300L	As Necessary	Code B
Conductive Coating	-	-	As Necessary	Commercially Available
Double-sided Tape	-	-	As Necessary	Commercially Available
Methyl Ethyl Ketone	MEK	ASTM D740	As Necessary	Commercially Available
Sandpaper	-	-	As Necessary	Commercially Available
Needle and Thread	-	-	As Necessary	Commercially Available

- NOTES:**
1. Refer to the table that follows for each supplier's address listed by codes.
  2. The Curing Time (CT), if applicable, for each consumable material is indicated with the description of each product.
  3. At the time of release of this Service Bulletin, the information on the suppliers was valid and accurate. In the event that this information has changed, the operator is encouraged to use the World Wide Web to find a local supplier.

**BOMBARDIER**  
**GLOBAL EXPRESS**  
**BOMBARDIER**  
**GLOBAL EXPRESS<sup>XRS</sup>**

MODEL BD-700-1A10 (BD-700)

<b>SUPPLIERS ADDRESSES BY CODES</b>	
<p><b>Code: A</b> Tempo Paint and Varnish Co. 205 Fenmar Dr. West Toronto, Ontario Canada Tel: (416) 746-2233 <a href="http://www.tempo-aerospace.com">www.tempo-aerospace.com</a></p>	<p><b>Code: B</b> 3M Co. 3M Global Headquarters St. Paul, MN 55144-1000 Tel: 1-888-364-3577 <a href="http://www.3m.com">www.3m.com</a></p>
<p><b>Code: C</b> Commercially Available</p>	

**D. Publications**

No publications required.

**BOMBARDIER**  
**GLOBAL EXPRESS**  
**BOMBARDIER**  
**GLOBAL EXPRESS XRS**  
 MODEL BD-700-1A10 (BD-700)

PAR L'INTERMÉDIAIRE DE SES GROUPES, DIVISIONS ET/OU FILIALES OPÉRATIVES, BOMBARDIER INC. DÉTIENDE LES DROITS DE PROPRIÉTÉ ET, EN VERTU DE SA POSITION D'INDUSTRIEL DE NOTRE SOCIÉTÉ AU QUÉBEC, LA DIRECTION GÉNÉRALE DES BREVETS, DES MARQUES DÉPOSÉES ET DES DROITS DE PROPRIÉTÉ INDUSTRIELLE. BOMBARDIER AGENCE ET, PAR SON TRAVAIL, PRÉSENTE LES SERVICES JURIDIQUES BOMBARDIER AÉROSPATIAUX.

LES RECOMMANDATIONS, DONNÉES ET DESSINS TECHNIQUES D'USAGE PRÉSENTÉS SONT LA PROPRIÉTÉ DE BOMBARDIER INC. ET NE DOIVENT ÊTRE DIVULGUÉS AUCUNEMENT NI UTILISÉS PAR QUI QUE CE SOIT SANS LE CONSENTEMENT ÉCRIT DE BOMBARDIER INC. LES DROITS DE PROPRIÉTÉ INDUSTRIELLE, NOTAMMENT LES DROITS DE BREVETS, LES DROITS DE MARQUE DÉPOSÉE ET LES DROITS DE PROPRIÉTÉ INDUSTRIELLE, SONT DÉPOSÉS EN SON NOM ET SONT DÉPOSÉS EN SON NOM. BOMBARDIER DÉTIENDE LES DROITS DE PROPRIÉTÉ INDUSTRIELLE, NOTAMMENT LES DROITS DE BREVETS, LES DROITS DE MARQUE DÉPOSÉE ET LES DROITS DE PROPRIÉTÉ INDUSTRIELLE, SONT DÉPOSÉS EN SON NOM ET SONT DÉPOSÉS EN SON NOM.

**BOMBARDIER**  
**AEROSPACE**

Bombardier, Inc., Montreal  
 P.O. Box 6087, Station Centre-ville  
 Montreal, Quebec, Canada H3C 3G9

DRAWN BY: C. WATSON  
 SHEET 1 OF 2  
 MS CODE R  
 PL KGC991-1335  
 REV -A

TITLE  
 KIT-BAGGAGE DOOR REWORK TO ACCOMMODATE NEW INBOARD HANDLE

CAGE CODE 88308  
 MODEL VERSION: 06  
 MODEL TYPE: MAST

QTY REQ'D PER RH LH	FIND NO.	ZONE SHEET	CAGE CODE	PART, DASH OR IDENTIFYING NO.	DESCRIPTION	SIZE	MATERIAL SPEC	FNSH CODE	P N C T N E
	1		88308	-1	KIT-BAGGAGE DOOR REWORK	INSTL			
	30		88308	-13	KIT-BAGGAGE DOOR REWORK	INSTL			
	REF	32	88308	-15	DOOR HANDLE COVER		M/F GD742-3012		
	1	33	88308	-17	DECAL TO OPEN BAGG DOOR	△			
	1	34	88308	GD972-0001-73	DECAL PUSH				
	1	35	88308	GC781-1002-3	PLACARD ASSY				
	1	36	88308	GC781-1001-3	PLACARD ASSY				

B70501-1 C14 REV 2004-06

BOMBARDIER INC. BY ITS GROUPS, DIVISIONS AND/OR CORPORATE SUBSIDIARIES, PROVIDES THIS INFORMATION TO THE USER UNDER THE CONDITION THAT THE USER SHALL NOT DISCLOSE OR REPRODUCE THIS INFORMATION TO ANY OTHER PARTY WITHOUT THE WRITTEN PERMISSION OF BOMBARDIER INC. BOMBARDIER INC. AND ITS GROUPS, DIVISIONS AND/OR CORPORATE SUBSIDIARIES, SHALL NOT BE LIABLE FOR ANY DAMAGES, INCLUDING CONSEQUENTIAL DAMAGES, ARISING FROM THE USE OF THIS INFORMATION, WHETHER OR NOT SUCH DAMAGES WERE FORESEEN OR NOT. THE FOREGOING SHALL NOT APPLY TO PERSONS HAVING PROPRIETARY RIGHTS TO SUCH INFORMATION, TECHNICAL DATA OR DESIGNS TO THE EXTENT OF SUCH PROPRIETARY RIGHTS.

© 2004 Bombardier Inc.

SB700-52-011-1335-A-S1-PL

**PL KGC991-1335** – Kit – Baggage Door – Rework to Accommodate New Inboard Handle, -13 Installation  
 (Sheet 1 of 2, Rev. A)

**BOMBARDIER  
GLOBAL EXPRESS**  
**BOMBARDIER  
GLOBAL EXPRESS<sup>XRS</sup>**  
MODEL BD-700-1A10 (BD-700)

<b>BOMBARDIER AEROSPACE</b>  Bombardier Inc., Montreal P.O. Box 6087, Station Centre-ville Montreal, Quebec, Canada H3C 3G9	DRAWN BY: C. WATSON	SHEET 2	MS CODE PL KGC991-1335	MODEL VERSION: 06 MODEL TYPE: MAST	REV -A
---	------------------------	------------	---------------------------	---------------------------------------	-----------

**NOTES**

- 1 SEAL EDGES WITH 2 COATS OF PRIMER.
- 2 INSTALL PLACARD ASSYS USING COMMERCIALLY AVAILABLE DOUBLE SIDED TAPE AND SEW PLACARD ASSYS TO DOOR HANDLE COVER TO MATCH A/C FINISH.
- 3 THE CATIA 2D DEFINITION IS THE SOLE AUTHORITY FOR INTERNAL USE.
- 4 IDENTIFY PER BEST SHOP PRACTICE.
- 5 NOTE DELETED.
- 6 NOTE DELETED.
- 7 INSTALL DECALS PER BD700 SRM CHAPTER 20-80-01
- 8 MATERIAL : ADHESIVE BACKED ELASTOMERIC MARKING MATERIAL : MIL-P-38477, TYPE I CLASS 1, COLOUR WHITE #17875. SILK SCREEN PRINTING PER BAPS 138-048, LINES AND GRAPHICS, COLOUR BLACK # 17038. IDENTIFY PER BAPS 144-005. LETTERING TO BE MINIMUM 0.125 INCHES.
- 9 FOR DETAILS OF -1 INSTALLATION SEE REV -- OF THIS DRAWING. -1 INSTALLATION WAS INSTALLED ON PROOF AIRCRAFT ONLY.

BT0801-2 CT4 REV 2004-06 © 2004 Bombardier Inc.

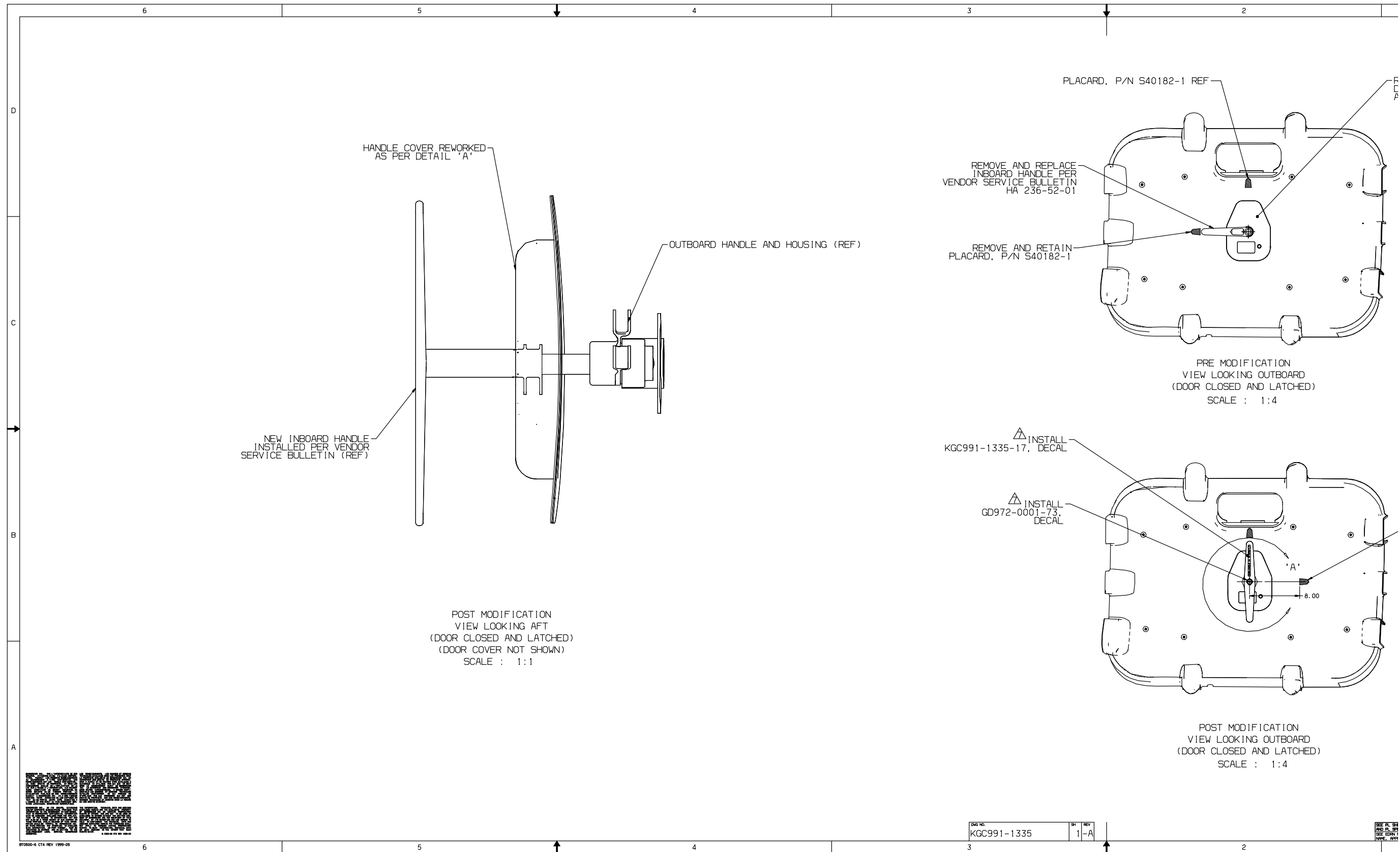
SB700-52-011-1335-A-S2-PL

**PL KGC991-1335** – Kit – Baggage Door – Rework to Accommodate New Inboard Handle, -13 Installation  
(Sheet 2 of 2, Rev. A)

Basic Issue: Dec 22/2008

**700-52-034**  
Page 9 of 13

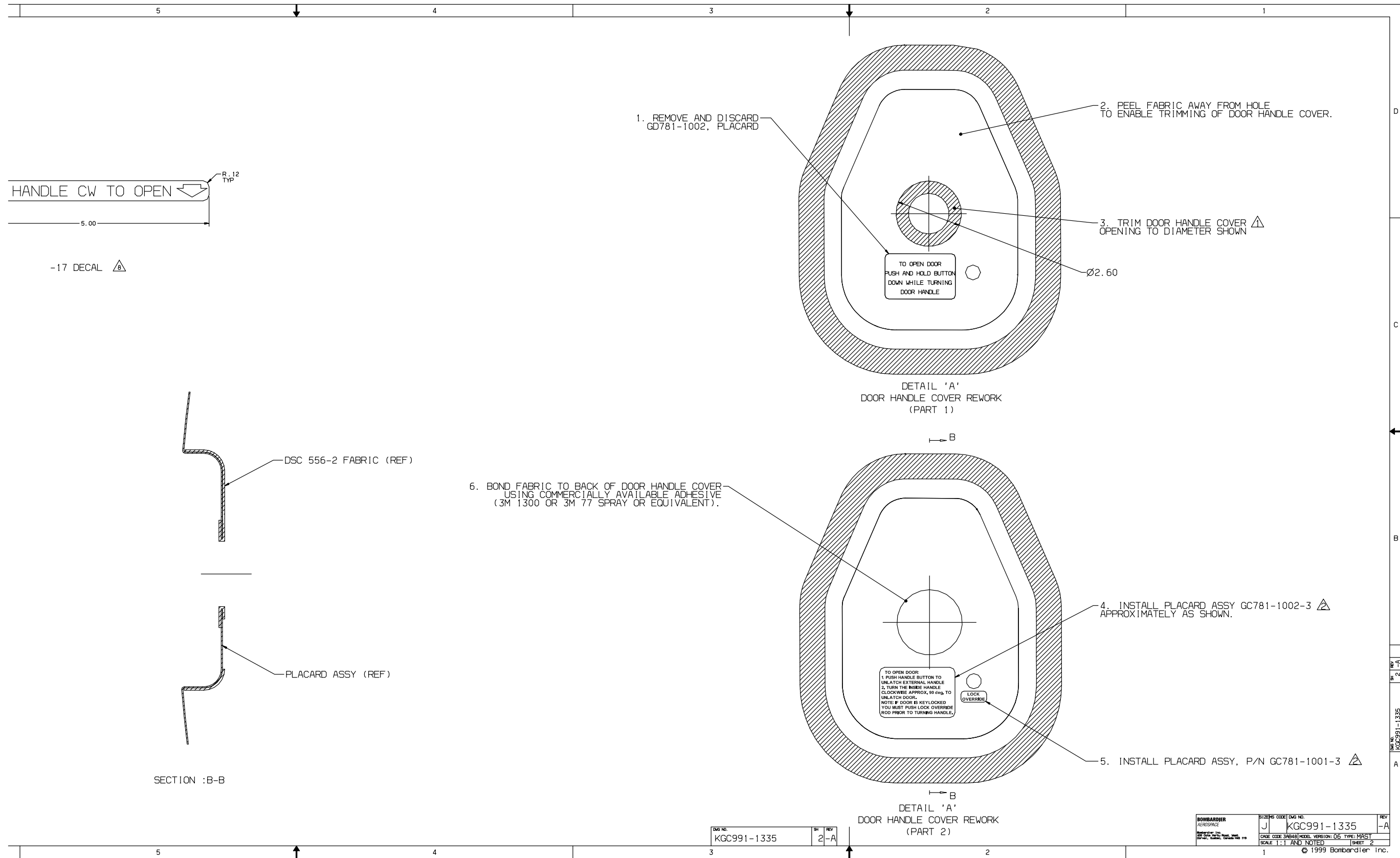




**KGC991-1335** – Kit – Baggage Door – Rework to Accommodate New Inboard Handle, -13 Installation  
(Sheet 1 of 2, Rev. A, continued)

Basic Issue: Dec 22/2008

**700-52-034**  
Page 11 of 13

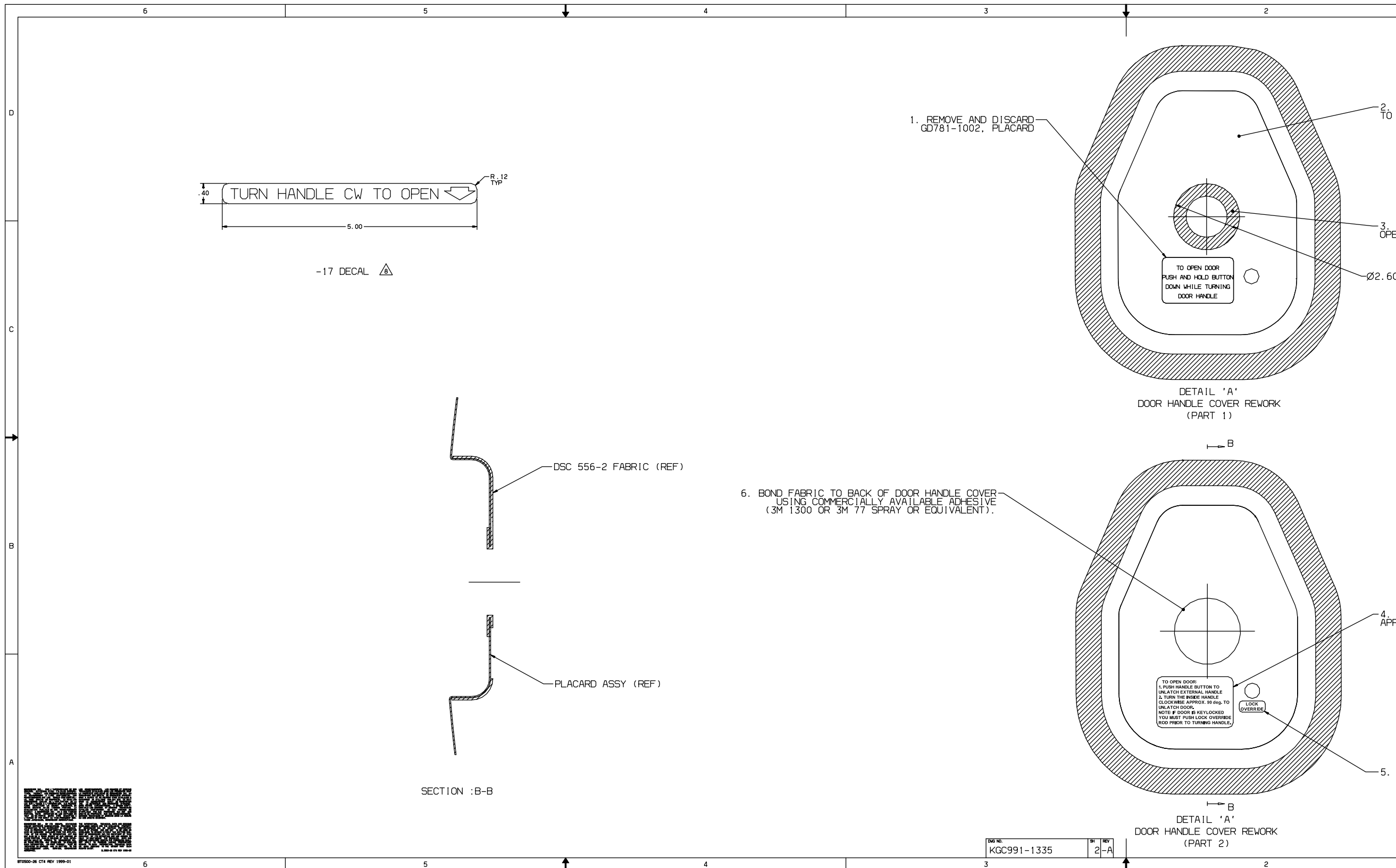


**KGC991-1335 – Kit – Baggage Door – Rework to Accommodate New Inboard Handle, -13 Installation (Sheet 2 of 2, Rev. A)**

Basic Issue: Dec 22/2008

**700-52-034**  
Page 12 of 13

SB700-52-011-1335-A-52-1



**KGC991-1335** – Kit – Baggage Door – Rework to Accommodate New Inboard Handle, -13 Installation  
(Sheet 2 of 2, Rev. A, continued)

Basic Issue: Dec 22/2008

**700-52-034**  
Page 13 of 13

## SERVICE BULLETIN EVALUATION FORM

(Your ideas will help us provide better bulletins)

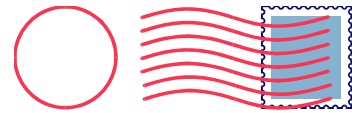
**SERVICE BULLETIN:** 700-52-034      **ISSUE:** Basic      **DATED:** Dec 22/2008

**TITLE:** Modification – Baggage Door – Introduction of New Internal Door “T” Handle

	STRONGLY DISAGREE	DISAGREE	NEUTRAL	AGREE	STRONGLY AGREE
<ul style="list-style-type: none"> <li>• <b>Instructions to do the Service Bulletin were accurate.</b> Comments:</li> </ul>	<input type="checkbox"/>	<input type="checkbox"/>	<input type="checkbox"/>	<input type="checkbox"/>	<input type="checkbox"/>
<ul style="list-style-type: none"> <li>• <b>Illustration(s), figure(s), and/or kit drawing(s) were helpful to carry out instructions.</b> Comments:</li> </ul>	<input type="checkbox"/>	<input type="checkbox"/>	<input type="checkbox"/>	<input type="checkbox"/>	<input type="checkbox"/>
<ul style="list-style-type: none"> <li>• <b>If a kit was required, did the kit contents received agree with the contents listed in the bulletin?</b> Comments:</li> </ul>	<input type="checkbox"/>	<input type="checkbox"/>	<input type="checkbox"/>	<input type="checkbox"/>	<input type="checkbox"/>
<ul style="list-style-type: none"> <li>• <b>The loose parts listed under Paragraph 3 were easily procured.</b> Comments:</li> </ul>	<input type="checkbox"/>	<input type="checkbox"/>	<input type="checkbox"/>	<input type="checkbox"/>	<input type="checkbox"/>
<ul style="list-style-type: none"> <li>• <b>Work was accomplished in the prescribed time.</b> Comments:</li> </ul>	<input type="checkbox"/>	<input type="checkbox"/>	<input type="checkbox"/>	<input type="checkbox"/>	<input type="checkbox"/>
<ul style="list-style-type: none"> <li>• <b>Overall, I was satisfied with this Service Bulletin.</b> Comments:</li> </ul>	<input type="checkbox"/>	<input type="checkbox"/>	<input type="checkbox"/>	<input type="checkbox"/>	<input type="checkbox"/>

<i>For administrative use only</i>	PLEASE SUPPLY US WITH THE FOLLOWING DATA AND FAX TO: (514) 855-7634 or E-MAIL TO: <a href="mailto:MTL_BBAD_SB_EVALUATION@AERO.BOMBARDIER.COM">MTL_BBAD_SB_EVALUATION@AERO.BOMBARDIER.COM</a>	
	0522TC	OPERATOR: _____ AIRCRAFT SERIAL NO.: _____ TELEPHONE: _____ FACSIMILE: _____ NAME: (Please print) _____

THANK YOU FOR YOUR RESPONSE!  
 PLEASE RETURN THIS COMPLETED EVALUATION FORM BY MAIL, E-MAIL OR FAX



**Bombardier Business Aircraft Customer Services (BBACS)**

P.O. Box 6087, Station Centre-ville  
Montréal, Québec, Canada H3C 3G9

Attention: Customer Support Department

---

## SERVICE BULLETIN INCORPORATION SHEET – “700-52-034”

Upon completion of the Service Bulletin, please fill in this form and either fold and mail in the envelope provided, or fax to:(514) 855-8798, or e-mail to Fracas at [fracas.montreal@aero.bombardier.com](mailto:fracas.montreal@aero.bombardier.com)

**NOTE:** For configuration control purposes, please fill out one form for each Service Bulletin.

Service Bulletin Number	Rev.	* Parts Completed	COMPLIED WITH		Remarks
			YES	NO	
700-52-034	Basic	-	<input type="checkbox"/>	<input type="checkbox"/>	_____
-	-	-	<input type="checkbox"/>	<input type="checkbox"/>	_____
-	-	-	<input type="checkbox"/>	<input type="checkbox"/>	_____
-	-	-	<input type="checkbox"/>	<input type="checkbox"/>	_____

**Actual hours to accomplish Service Bulletin:** \_\_\_\_\_

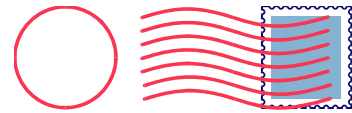
\* **NOTES:**

- Where the Service Bulletin is divided into a number of parts (e.g., PARTS A, B, C, D, etc.) which can be carried out separately, indicate only those parts completed at this time.
- For repetitive checks (usually PART A) only the initial check should be reported unless otherwise stated in the Service Bulletin.
- When more than one part is carried out at the same time, each part should be reported.

**Is the aircraft enrolled on the CAMP computerized maintenance program?**      **Yes**      **No**

Aircraft Serial No.	_____	Aircraft Reg. No.	_____
Airframe Landings	_____	Airframe Hours	_____
Date of Incorporation	_____	Service Order No.	_____
Facility & Location Incorporation Bulletin	_____		
PRINT NAME	_____	DATE:	_____
SIGNATURE:	_____		



**Bombardier Business Aircraft Customer Services (BBACS)**

P.O. Box 6087, Station Centre-ville  
Montréal, Québec, Canada H3C 3G9

Attention: Customer Support Department, Maintenance Engineering

---