



# MONOGRAM SYSTEMS

1500 Glenn Curtiss Street  
Carson, California 90746-4012 – USA

## SERVICE BULLETIN

MODEL: Global Express/Global Express XRS (BD-700-1A10)  
and Global 5000 (BD-700-1A11)

NO: 871500-25-2146

ATA SYSTEM: 25-10

DATE: Sept 17/07

Subject:

GLOBAL EXPRESS CREW SEATS – FORE/AFT ADJUSTMENT CABLE STOP

### 1. Planning Information

#### A. Effectivity

This service bulletin affects Global Express/Global Express XRS (BD-700-1A10) and Global 5000 (BD-700-1A11) Pilot Seats (P/N's 871500-602 thru 608) and the Co-Pilot Seat Assemblies (P/N's 871500-603 thru -609). For effectivity, refer to the following page for Table 1.

#### B. Concurrent Requirements

Not affected.

#### C. Reason

Product improvement to reduce the tension on the fore/aft cable.

#### D. Description

On both the Pilot/Co-Pilot Seats the service bulletin attaches a stop handle to the lever assembly on the fore/aft control installation. The SP Kits 120SP017 contains all the parts necessary to complete this job. (Refer to Table 1 for effectivity).

#### E. Compliance

Recommendation for incorporation of this service bulletin is at the earliest opportunity where manpower and facilities are available.

Sept 17/07

DISTRIBUTION STATEMENT

871500-25-2146

This document contains proprietary information of Monogram Systems, and it is issued in strict confidence. Except for rights expressly granted by contract, this document may not, in whole or in part, be duplicated, reproduced, disclosed, or used for design or manufacturing purposes without written authorization from Monogram Systems.

PAGE 1 OF 10

# MONOGRAM SYSTEMS

## SERVICE BULLETIN

Effectivity  
Table 1

Seat	Seat Assy P/N	Serial No's	Fore/Aft Adjustment & Control Instl	SP Kit
Pilot	871500-602	0010 thru 0056	871528-401	120SP017
	871500-604	0057 thru 0073 0075 thru 0088 0090 thru 0103 0109 thru 0129		
	871500-604-001	0104 thru 0108	871528-401	
	871500-604-003	0074 Only	871528-401	
	871500-604-004	0089 Only		
	871500-606	0130 thru 0139 0141 thru 0162	871528-403	
	871500-606-001	0140 Only	871528-403	
	871500-608	0163 thru 0315	871528-405	
Co-Pilot	871500-603	0009 thru 0056	871528-402	120SP017
	871500-605	0057 thru 0072 0074 thru 0096 0098 thru 0122		
	871500-605-002	0123 thru 0128	871528-402	
	871500-605-003	0073 Only	871528-402	
	871500-605-004	0097 Only	871528-404	
	871500-607	0129 thru 0132 0134 thru 0160	871528-404	
	871500-607-001	0133 Only	871528-404	
	871500-609	0161 thru 0309	871528-406	

F. Approval

This service bulletin has been reviewed by the appropriate governmental authority and the repairs and modifications herein comply with the applicable Aviation Regulations and are APPROVED for installation in the Model Global Express/Global Express XRS (BD-700-1A10) and Global 5000 (BD-700-1A11).

G. Manpower

The work phases and estimated time to accomplish the modifications that are outlined in this service bulletin are shown in Table 2.

Manpower  
Table 2

REWORK PHASE	ESTIMATED TIME
120SP017	
a. Disassembly .....	0.017 man-hour(s)
b. Assembly .....	0.025 man-hour(s)
TOTAL .....	0.042 man-hour(s)

**NOTE:** The above estimates do not include time for setup, planning, and familiarization.

# MONOGRAM SYSTEMS

## SERVICE BULLETIN

### H. Weight and Balance

Not affected.

### I. Electrical Load Data

Not affected.

### J. References

- (1) Monogram Systems (Formerly Weber Aircraft) blueprints 871528 Rev M and 871832 Rev A.
- (2) Monogram Systems (Formerly Weber Aircraft) Component Maintenance Manual with Illustrated Parts List ATA 25-10-42, covering Global Express Seat Assembly Pilot and Co-Pilot, Part Numbers 871500-602 thru -609.

### K. Other Publication Affected

None.

# MONOGRAM SYSTEMS

## SERVICE BULLETIN

### 2. Material Information

#### A. Material - Price and Availability

The SP Kit 120SP017 may be obtained from MonogramSystems free of charge until December 31, 2008. The Operator is responsible for the installation of the Modification Kit.

After December 31, 2008, the SP Kit identified in Table 3 may be obtained from Monogram Systems within the terms and conditions described herein. Price and delivery data will be provided upon request. When source capacity is limited and material availability is the pacing factor, customer purchase orders will receive an allocation from available quantities based upon the receipt date of purchase orders by the Spares Department.

Delivery dates will be computed from the expiration date of this quotation if the order is received prior to the expiration date. Information regarding improved delivery dates at increased prices may be obtained by request through normal procurement channels.

Address purchase orders pertaining to this service bulletin to:

Monogram Systems  
1500 Glenn Curtiss Street, Carson CA. 90746-4012 USA.  
Attn: Manager, Product Support Department.  
Telephone: (310) 884-7000 Fax: (310) 884-7300

Material - Monogram Systems Furnished  
Table 3

Kit Number	Description	Delivery	Price Schedule		
			Rate	1-9	10-24 25-up
120SP017	Global Express Crew Seats Fore/Aft Adjustment Cable Stop	request quote			request quote

#### B. Bill of Materials

The following kit contains parts and hardware necessary to modify the Global Express/Global Express XRS (BD-700-1A10) and Global 5000 (BD-700-1A11) ) for Pilot Seats (P/N's 871500-602 thru 608) and the Co-Pilot Seat Assemblies (P/N's 871500-603 thru -609). One SP kit is required per Seat.

Material Information Parts Tabulation  
Table 6

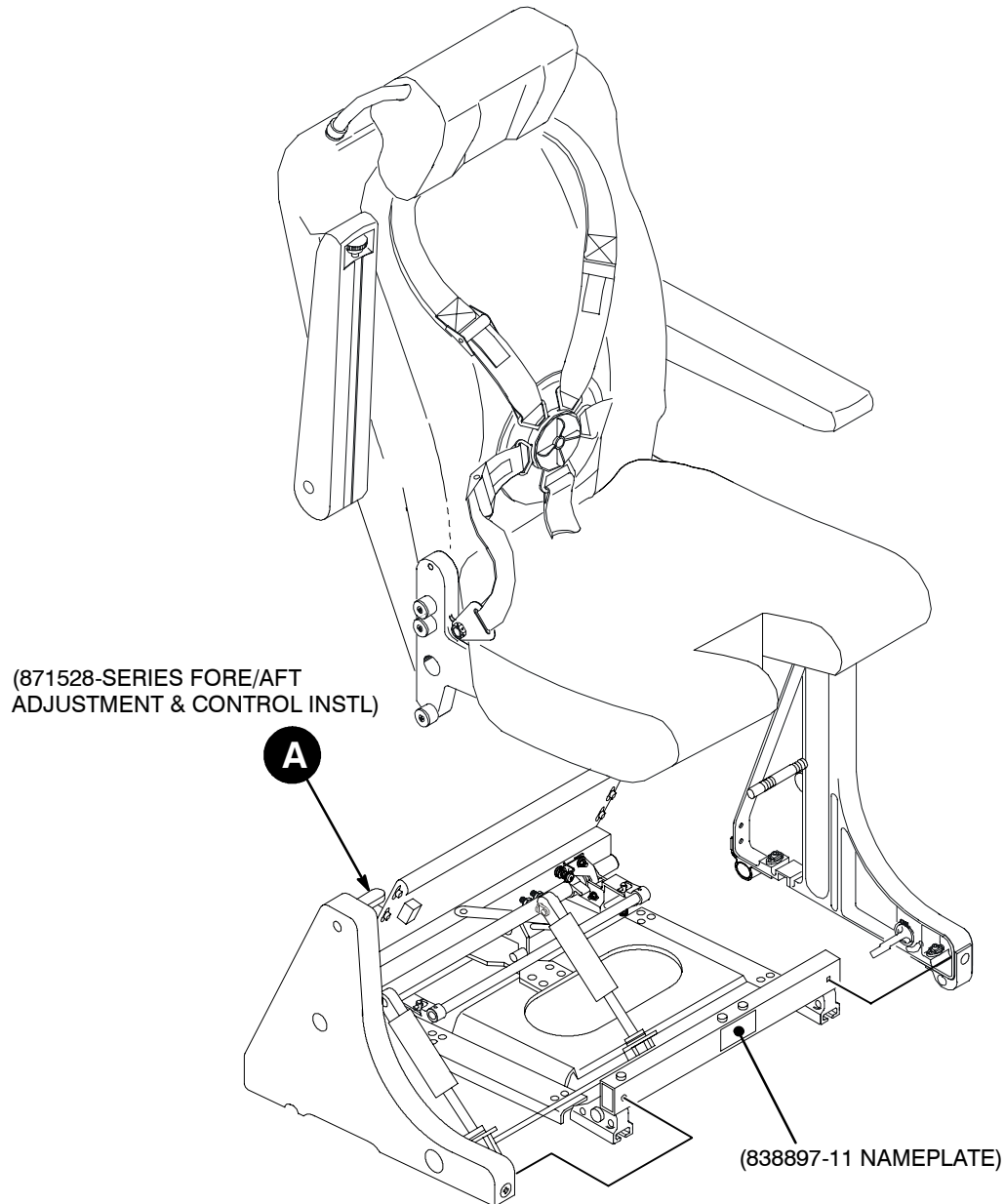
New Part Number	Qty/Seat	Unit List Price	Keyword	Old Part Number	Instr. Disp.
120SP017	REF	*	Global Express Crew Seats Fore/Aft Adjustment Cable Stop		
CONSISTING OF					
871832	1	N/A	Handle-Fore/Aft Control, Stop	None	N/A
816929-17	1	N/A	Modification Plate	None	N/A
Note: *See paragraph 2.A "Material - Cost and Availability for prices.					

C. Tooling - Price and Availability

No special tools are required.

# MONOGRAM SYSTEMS

## SERVICE BULLETIN



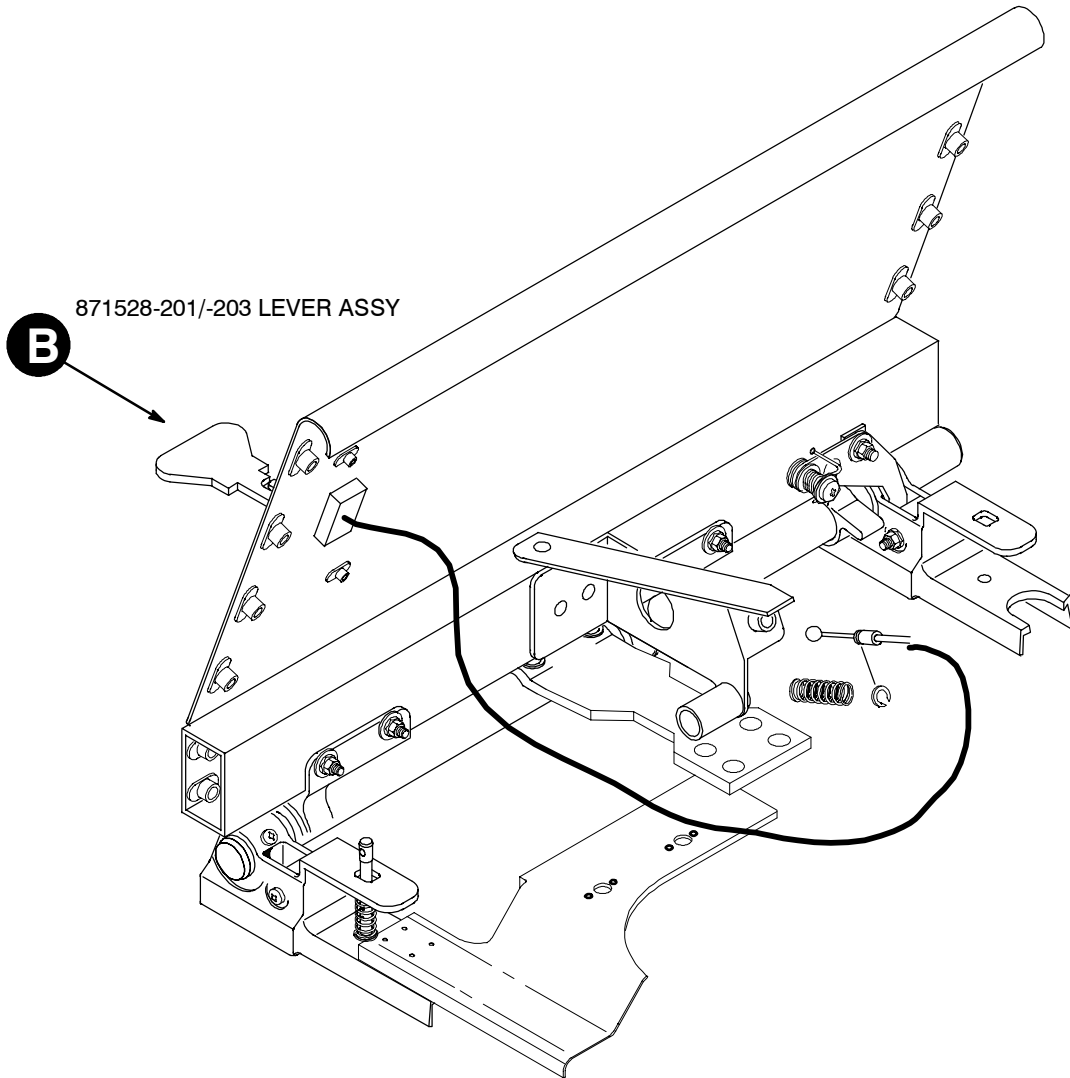
871500-604 PILOT SEAT ASSY (SHOWN)  
871500-605 CO-PILOT SEAT ASSY (OPPOSITE)

PRE/POST-SERVICE BULLETIN CONDITION  
FIGURE 1 (SHEET 1 OF 3)

# MONOGRAM SYSTEMS

## SERVICE BULLETIN

**A**



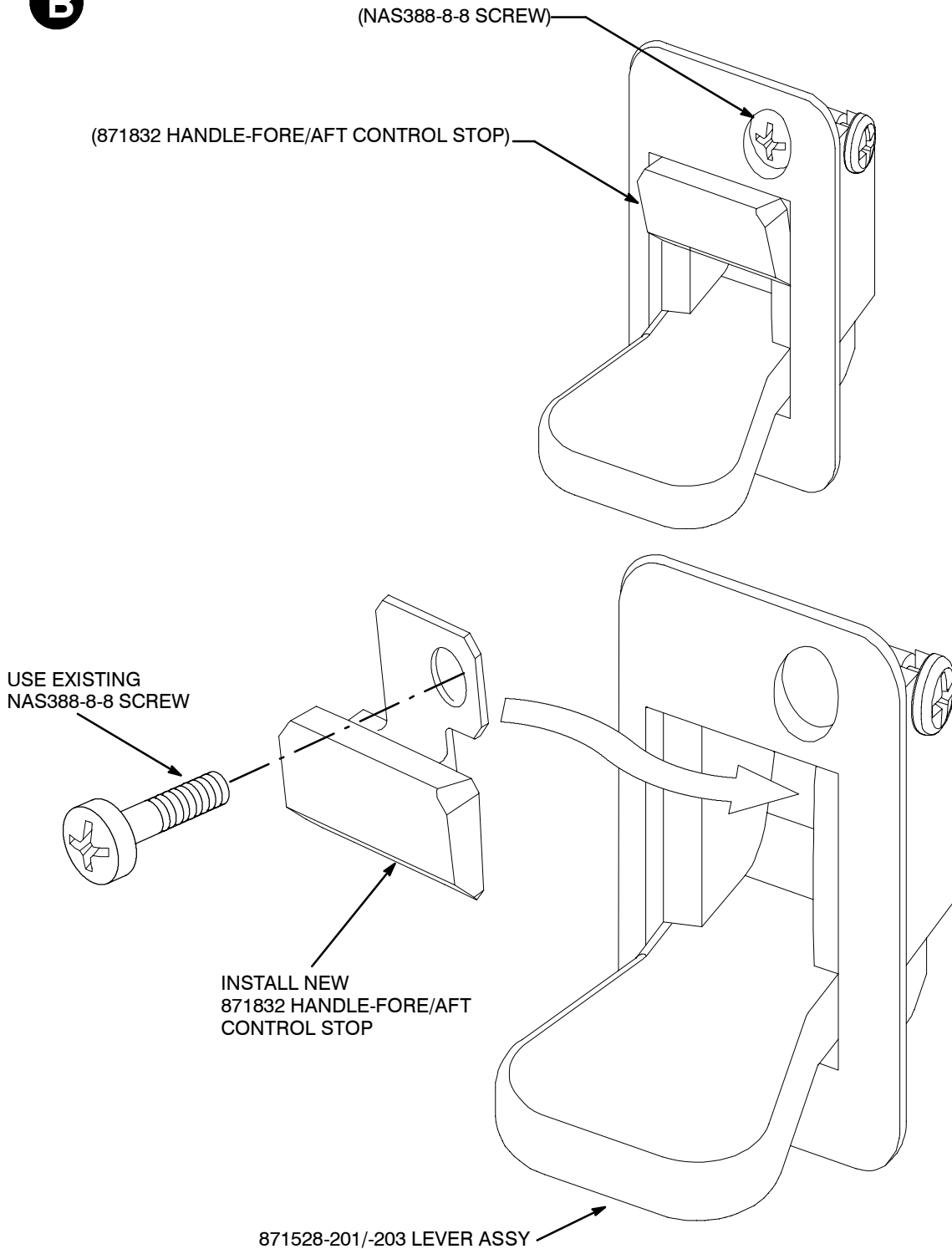
871528-401/-402/-403/-404/-405/-406 FORE/AFT ADJUSTMENT & CONTROL INSTL

PRE/POST-SERVICE BULLETIN CONDITION  
FIGURE 1 (SHEET 2 OF 3)

# MONOGRAM SYSTEMS

## SERVICE BULLETIN

**B**



871528-201/-203 LEVER ASSY USED ON 871528-401/-402/-403/-404/-405/-406  
FORE/AFT ADJUSTMENT & CONTROL INSTALLATION

PRE/POST-SERVICE BULLETIN CONDITION  
FIGURE 1 (SHEET 3 OF 3)

# MONOGRAM SYSTEMS

## SERVICE BULLETIN

### 3. Accomplishment Instructions

NOTE: The following procedures are identical to both the Pilot and Co-Pilot Seat Assemblies.

#### A. Disassembly Procedures

- (1) Refer to Figure 1.
- (2) On the 871500-602/-604/-604-001/-604-003/-604-004/-606/-606-001/-608 Pilot Seat Assemblies remove and retain the NAS388-8-8 Screw from the 871528-201/-203 Lever Assembly on the 871528-401/-403/-405 Fore/Aft Adjustment and Control Installation.
- (3) On the 871500-603/-605/-605-002/-605-003/-605-004/-607/-607-001/-609 Co-Pilot Seat Assemblies remove and retain the NAS388-8-8 Screw from the 871528-201/-203 Lever Assembly on the 871528-402/-404/-406 Fore/Aft Adjustment and Control Installation.

#### B. Assembly Procedures

- (1) Refer to Figure 1.
- (2) On the 871500-602/-604/-604-001/-604-003/-604-004/-606/-606-001/-608 Pilot Seat Assemblies insert the new 871832 Handle-Fore/Aft Control, Stop into the 871528-201/-203 Lever Assembly, reinstall the existing NAS388-8-8 Screw.
- (3) On the 871500-603/-605/-605-002/-605-003/-605-004/-607/-607-001/-609 Co-Pilot Seat Assemblies insert the new 871832 Handle-Fore/Aft Control, Stop into the 871528-201/-203 Lever Assembly, reinstall the existing NAS388-8-8 Screw.

#### C. Installation of Modification Plate

- (1) Use MEK or isopropyl alcohol to clean an area approximately the size of modification plate near the data plate. Let cleaned area air dry.
- (2) On the face of the 816929-17 Modification Plate, carefully remove the protective cover. Use a typewriter or engraving tool to mark the service bulletin number 871500-25-2146, the SP Kit number (120SP017) and the current date on the 816929-17 Modification Plate.
- (3) Peel off the protective backing attached to the pressure sensitive adhesive off the back of 816929-17 Modification Plate. Use care not to touch the adhesive or contaminate it in any way, carefully locate the 816929-17 Modification Plate near the original 838897-11 Nameplate on the Pilot Seats (P/N's 871500-602 thru 608) and the Co-Pilot Seat Assemblies (P/N's 871500-603 thru -609). Press down on the modification plate to secure it. Relieve any air pockets and smooth down. (Refer to Figure 1, Sheet 1, for location of original nameplate).
- (4) Do not remove the original 838897-11 Nameplate from the seat.

# MONOGRAM SYSTEMS

## SERVICE BULLETIN

THIS PAGE INTENTIONALLY LEFT BLANK