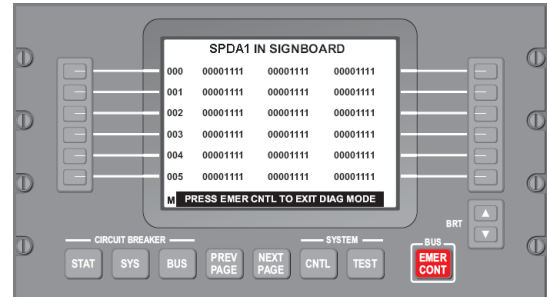
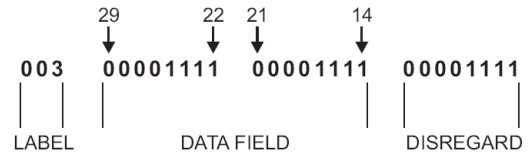


EMS CDU SIGNBOARD MENU

Diagnostic Procedure

General Notes:

Only Bit(s) set to 1 need to be recorded. Bit numbering of a label is shown on the picture beside. Only left and center column will be shown for clarity.



Determine fault source:

Determine which system(s) is posting the **ELEC SYS FAIL** or **ELEC SYS FAULT** message posted on the Engine Indication Crew Alerting System (EICAS) by doing the following procedure.

Get access to EMS CDU signboard menu:

On **EMS CDU 1(2)**, select Diagnostic mode (also referred as Extended Functions)

1. Select SYSTEM - **CNTL** key (page 1)
2. Select lower **Left line select key**
3. Select lower **Right line select key**
4. Select **DAU OUT**
5. Select and record label 270 and 271 on the table below

	Left Column								Center column							
	29	28	27	26	25	24	23	22	21	20	19	18	17	16	15	14
270 ELEC SYS Fault (Level C)	X	X	X	X	X	X									X	X
271 ELEC SYS Fail (Level A)	X	X	X	X	X	X	X									X

X = Ignore the values in the position shown by an X.

Where bit(s) are set to "1", click on the associated message to continue troubleshooting:

[**ELEC SYS FAULT**](#)
[**ELEC SYS FAIL**](#)

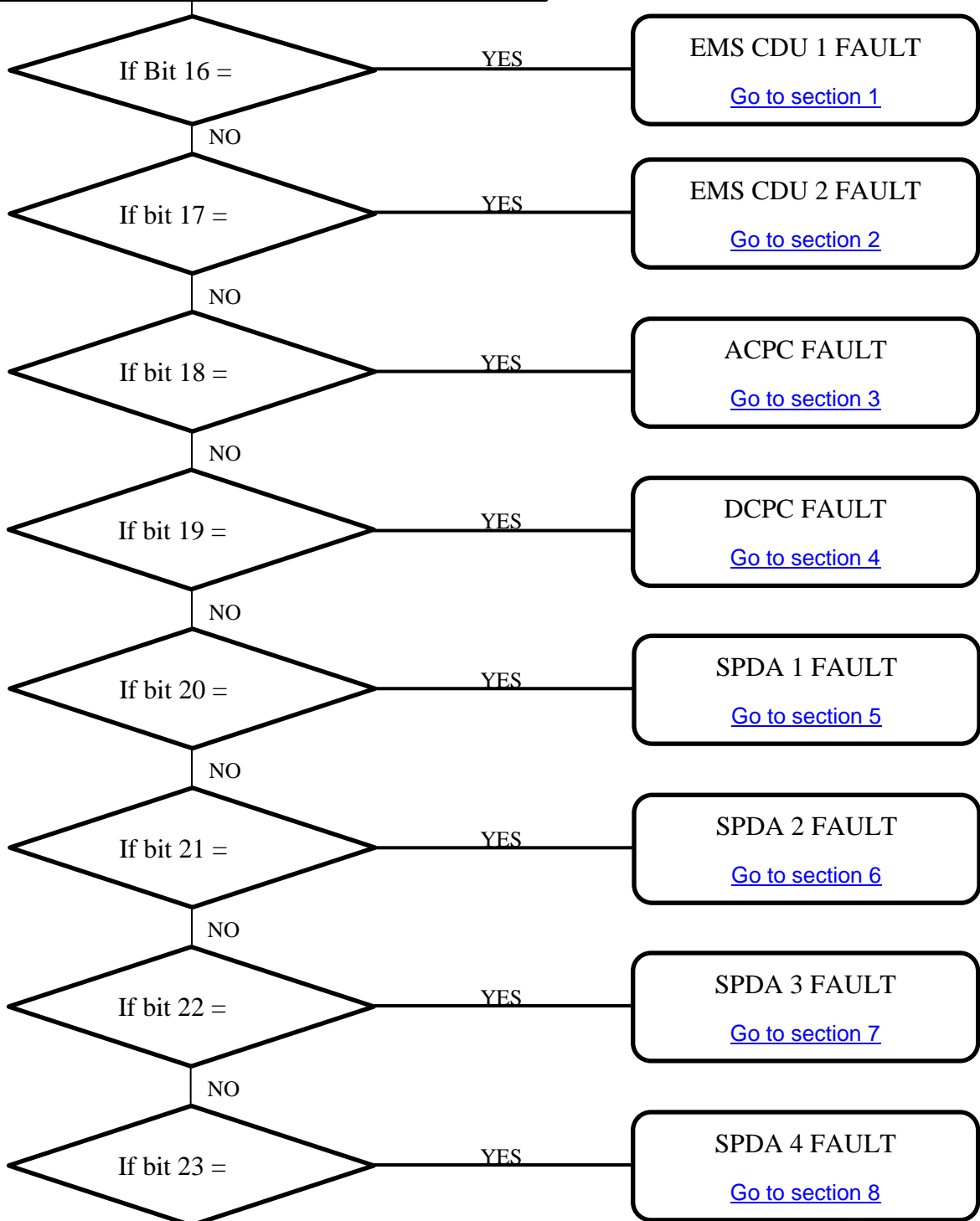
EMS CDU SIGNBOARD MENU

Diagnostic Procedure

On **EMS CDU 1(2)**, select Diagnostic mode (also referred to as Extended Functions)

1. Select SYSTEM - **CNTL** key (page 1)
2. Select lower **Left line select key**
3. Select lower **Right line select key**
4. Select **DAU OUT and label 270**
5. Record label 270
6. Is/Are Bit(s) =1?

ELEC SYS FAULT



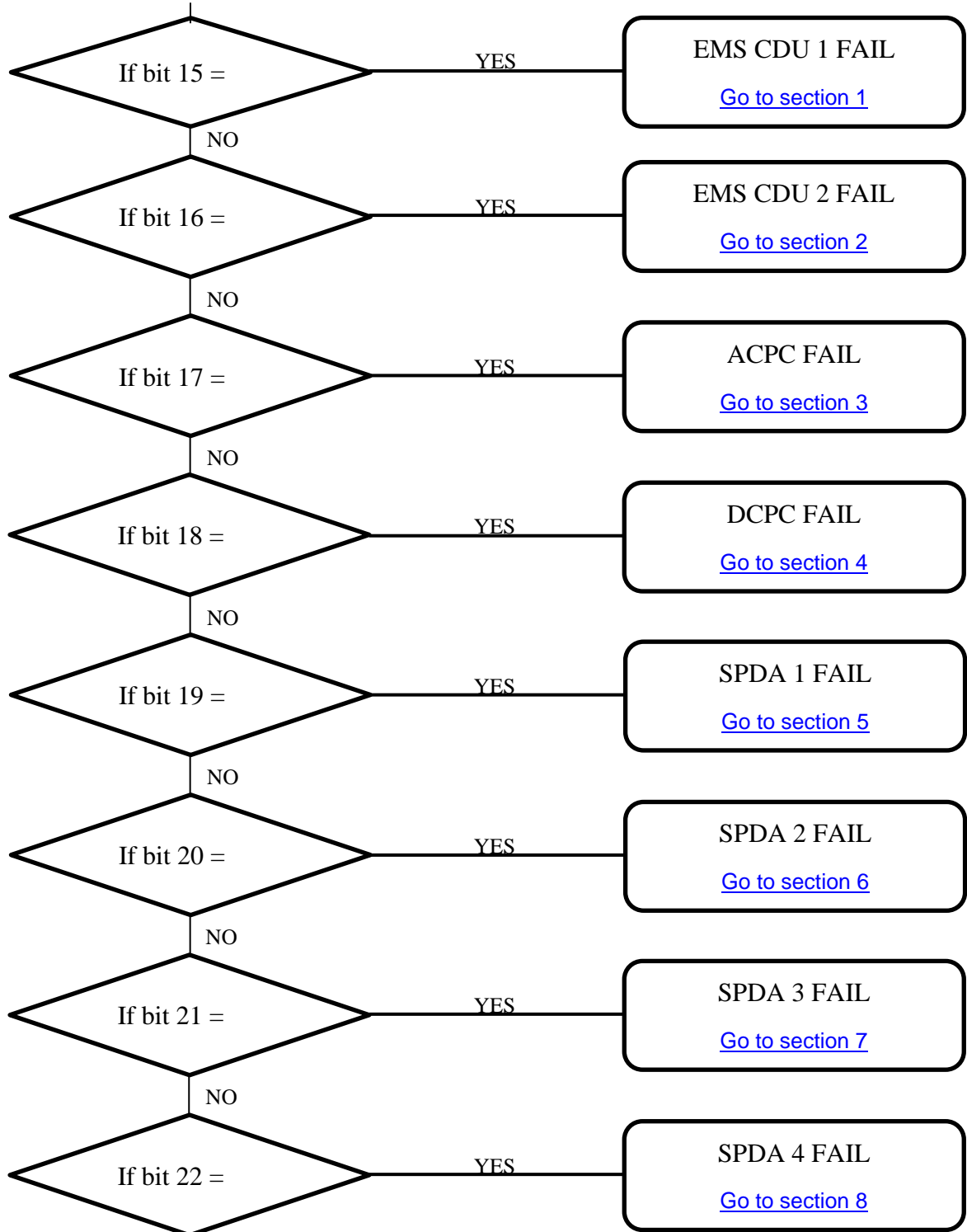
EMS CDU SIGNBOARD MENU

Diagnostic Procedure

On **EMS CDU 1(2)**, select Diagnostic mode (also referred to as Extended Functions)

1. Select SYSTEM - **CNTL** key (page 1)
2. Select lower **Left line select key**
3. Select lower **Right line select key**
4. Select **DAU OUT** and label **271**
5. Record label 271
6. Is/Are Bit(s) =1?

ELEC SYS FAIL



EMS CDU SIGNBOARD MENU

Diagnostic Procedure

SECTION 1

ELEC SYS FAULT

Label 270 Bit 16 = 1 (EMS CDU #1)

- A) On **EMS CDU 1**, select CIRCUIT BREAKER - **STATUS** key
 Select SYSTEM - **CNTL** key (page 1)
- Select lower left key
 - Select lower right key
- B) On **EMS CDU 1**, select Signboard **CDU OUT**.
- C) On **EMS CDU 1**, select and record labels 353 to 356

	Left Column								Center column							
	29	28	27	26	25	24	23	22	21	20	19	18	17	16	15	14
Label 353																
Label 354																
Label 355																
Label 356																

ELEC SYS FAIL

Label 271 Bit 15 = 1 (EMS CDU #1)

- A) On **EMS CDU 1**, select CIRCUIT BREAKER - **STATUS** key
 Select SYSTEM - **CNTL** key (page 1)
- Select lower left key
 - Select lower right key
- B) On **EMS CDU 1**, select Signboard **CDU OUT**
- C) On **EMS CDU 1**, select and record labels 353 to 356

	Left Column								Center column							
	29	28	27	26	25	24	23	22	21	20	19	18	17	16	15	14
Label 353																
Label 354																
Label 355																
Label 356																

EMS CDU SIGNBOARD MENU

Diagnostic Procedure

SECTION 2

ELEC SYS FAULT

Label 270 Bit 17 = 1 (EMS CDU #2)

- A) On **EMS CDU 2**, select CIRCUIT BREAKER - **STATUS** key
 Select SYSTEM - **CNTL** key (page 1)
- Select lower left key
 - Select lower right key
- B) On **EMS CDU 2**, select Signboard **CDU OUT**
- C) On **EMS CDU 2**, select and record labels 353 to 356

	Left Column								Center column							
	29	28	27	26	25	24	23	22	21	20	19	18	17	16	15	14
Label 353																
Label 354																
Label 355																
Label 356																

ELEC SYS FAIL

Label 271 Bit 16 = 1 (EMS CDU #2)

- A) On **EMS CDU 2**, select CIRCUIT BREAKER - **STATUS** key
 Select SYSTEM - **CNTL** key (page 1)
- Select lower left key
 - Select lower right key
- B) On **EMS CDU 2**, select Signboard **CDU OUT**
- C) On **EMS CDU 2**, select and record labels 353 to 356

	Left Column								Center column							
	29	28	27	26	25	24	23	22	21	20	19	18	17	16	15	14
Label 353																
Label 354																
Label 355																
Label 356																

EMS CDU SIGNBOARD MENU

Diagnostic Procedure

SECTION 3

ELEC SYS FAULT

Label 270 Bit 18 = 1 (ACPC)

- A) On **EMS CDU 1**, select CIRCUIT BREAKER - **STATUS** key
 Select SYSTEM - **CNTL** key (page 1)
 - Select lower left key
 - Select lower right key
- B) On **EMS CDU 1**, select Signboard **ACPC IN**
- C) On **EMS CDU 1**, select and record labels 353 to 365

	Left Column								Center column							
	29	28	27	26	25	24	23	22	21	20	19	18	17	16	15	14
Label 353																
Label 354																
Label 355																
Label 356																
Label 357																
Label 360																
Label 361																
Label 362																
Label 363																
Label 364																
Label 365																

EMS CDU SIGNBOARD MENU

Diagnostic Procedure

SECTION 3

ELEC SYS FAIL

Label 271 Bit 17 = 1 (ACPC)

- A) On **EMS CDU 1**, select CIRCUIT BREAKER - **STATUS** key
 Select SYSTEM - **CNTL** key (page 1)
 - Select lower left key
 - Select lower right key
- B) On **EMS CDU 1**, select Signboard **ACPC IN**
- C) On **EMS CDU 1**, select and record labels 353 to 365

	Left Column								Center column							
	29	28	27	26	25	24	23	22	21	20	19	18	17	16	15	14
Label 353																
Label 354																
Label 355																
Label 356																
Label 357																
Label 360																
Label 361																
Label 362																
Label 363																
Label 364																
Label 365																

EMS CDU SIGNBOARD MENU

Diagnostic Procedure

SECTION 4

ELEC SYS FAULT

Label 270 Bit 19 = 1 (DCPC)

- A) On **EMS CDU 1**, select CIRCUIT BREAKER - **STATUS** key
 Select SYSTEM - **CNTL** key (page 1)
- Select lower left key
 - Select lower right key
- B) On **EMS CDU 1**, select Signboard **DCPC IN**
- C) On **EMS CDU 1**, select and record labels 353 to 364

	Left Column								Center column							
	29	28	27	26	25	24	23	22	21	20	19	18	17	16	15	14
Label 353																
Label 354																
Label 355																
Label 356																
Label 357																
Label 360																
Label 361																
Label 362																
Label 363																
Label 364																

EMS CDU SIGNBOARD MENU

Diagnostic Procedure

SECTION 4

ELEC SYS FAIL

Label 271 Bit 18 = 1 (DCPC)

- A) On **EMS CDU 1**, select CIRCUIT BREAKER - **STATUS** key
 Select SYSTEM - **CNTL** key (page 1)
- Select lower left key
 - Select lower right key
- B) On **EMS CDU 1**, select Signboard **DCPC IN**
- C) On **EMS CDU 1**, select and record labels 353 to 364

	Left Column								Center column							
	29	28	27	26	25	24	23	22	21	20	19	18	17	16	15	14
Label 353																
Label 354																
Label 355																
Label 356																
Label 357																
Label 360																
Label 361																
Label 362																
Label 363																
Label 364																

EMS CDU SIGNBOARD MENU

Diagnostic Procedure

SECTION 5

ELEC SYS FAULT

Label 270 Bit 20 = 1 (SPDA 1)

- A) On **EMS CDU 1**, select CIRCUIT BREAKER - **STATUS** key
 Select SYSTEM - **CNTL** key (page 1)
- Select lower left key
 - Select lower right key
- B) On **EMS CDU 1**, select Signboard **SPDA 1 IN**
- C) On **EMS CDU 1**, select and record labels 353 to 357

	Left Column								Center column							
	29	28	27	26	25	24	23	22	21	20	19	18	17	16	15	14
Label 353																
Label 354																
Label 355																
Label 356																
Label 357																

ELEC SYS FAIL

Label 271 Bit 19 = 1 (SPDA 1)

- A) On **EMS CDU 1**, select CIRCUIT BREAKER - **STATUS** key
 Select SYSTEM - **CNTL** key (page 1)
- Select lower left key
 - Select lower right key
- B) On **EMS CDU 1**, select Signboard **SPDA 1 IN**
- C) On **EMS CDU 1**, select and record labels 353 to 357

	Left Column								Center column							
	29	28	27	26	25	24	23	22	21	20	19	18	17	16	15	14
Label 353																
Label 354																
Label 355																
Label 356																
Label 357																

EMS CDU SIGNBOARD MENU

Diagnostic Procedure

SECTION 6

ELEC SYS FAULT

Label 270 Bit 21 = 1 (SPDA 2)

- A) On **EMS CDU 1**, select CIRCUIT BREAKER - **STATUS** key
 Select SYSTEM - **CNTL** key (page 1)
- Select lower left key
 - Select lower right key
- B) On **EMS CDU 1**, select Signboard **SPDA 2 IN**
- C) On **EMS CDU 1**, select and record labels 353 to 357

	Left Column								Center column							
	29	28	27	26	25	24	23	22	21	20	19	18	17	16	15	14
Label 353																
Label 354																
Label 355																
Label 356																
Label 357																

ELEC SYS FAIL

Label 271 Bit 20 = 1 (SPDA 2)

- A) On **EMS CDU 1**, select CIRCUIT BREAKER - **STATUS** key
 Select SYSTEM - **CNTL** key (page 1)
- Select lower left key
 - Select lower right key
- B) On **EMS CDU 1**, select Signboard **SPDA 2 IN**
- C) On **EMS CDU 1**, select and record labels 353 to 357

	Left Column								Center column							
	29	28	27	26	25	24	23	22	21	20	19	18	17	16	15	14
Label 353																
Label 354																
Label 355																
Label 356																
Label 357																

EMS CDU SIGNBOARD MENU

Diagnostic Procedure

SECTION 7

ELEC SYS FAULT

Label 270 Bit 22 = 1 (SPDA 3)

- A) On **EMS CDU 1**, select CIRCUIT BREAKER - **STATUS** key
 Select SYSTEM - **CNTL** key (page 1)
- Select lower left key
 - Select lower right key
- B) On **EMS CDU 1**, select Signboard **SPDA 3 IN**
- C) On **EMS CDU 1**, select and record labels 353 to 357

	Left Column								Center column							
	29	28	27	26	25	24	23	22	21	20	19	18	17	16	15	14
Label 353																
Label 354																
Label 355																
Label 356																
Label 357																

ELEC SYS FAIL

Label 271 Bit 21 = 1 (SPDA 3)

- A) On **EMS CDU 1**, select CIRCUIT BREAKER - **STATUS** key
 Select SYSTEM - **CNTL** key (page 1)
- Select lower left key
 - Select lower right key
- B) On **EMS CDU 1**, select Signboard **SPDA 3 IN**
- C) On **EMS CDU 1**, select and record labels 353 to 357

	Left Column								Center column							
	29	28	27	26	25	24	23	22	21	20	19	18	17	16	15	14
Label 353																
Label 354																
Label 355																
Label 356																
Label 357																

EMS CDU SIGNBOARD MENU

Diagnostic Procedure

SECTION 8

ELEC SYS FAULT

Label 270 Bit 23 = 1 (SPDA 4)

- A) On **EMS CDU 1**, select CIRCUIT BREAKER - **STATUS** key
 Select SYSTEM - **CNTL** key (page 1)
- Select lower left key
 - Select lower right key
- B) On **EMS CDU 1**, select Signboard **SPDA 4 IN**
- C) On **EMS CDU 1**, select and record labels 353 to 357

	Left Column								Center column							
	29	28	27	26	25	24	23	22	21	20	19	18	17	16	15	14
Label 353																
Label 354																
Label 355																
Label 356																
Label 357																

ELEC SYS FAIL

Label 271 Bit 22 = 1 (SPDA 4)

- A) On **EMS CDU 1**, select CIRCUIT BREAKER - **STATUS** key
 Select SYSTEM - **CNTL** key (page 1)
- Select lower left key
 - Select lower right key
- B) On **EMS CDU 1**, select Signboard **SPDA 3 IN**
- C) On **EMS CDU 1**, select and record labels 353 to 357

	Left Column								Center column							
	29	28	27	26	25	24	23	22	21	20	19	18	17	16	15	14
Label 353																
Label 354																
Label 355																
Label 356																
Label 357																