

SERVICE BULLETIN INFORMATION SHEET

MODEL BD-700-1A10 (BD-700)

ATA 28-23

FUEL

**MODIFICATION – REFUEL/DEFUEL SYSTEM –
ADDITION OF REFUEL/DEFUEL CONTROL PANEL IN FLIGHT COMPARTMENT**

Service Bulletin No.: 700-28-002 **Issue:** Revision 02 **Dated:** Feb 16/2007

The following data is supplied for information only. No revision to the Service Bulletin is necessary.

Keep this Information Sheet with subject Service Bulletin.

This Information Sheet is issued to inform operators that the **EFFECTIVITY** row in the Service Bulletin Summary Sheet, the effectivity statement in Paragraph 1.A., **Effectivity**, Paragraph 1.C., **Description**, Paragraph 1.G., **Material – Cost and Availability**, Paragraph 1.I., **Weight and Balance**, Paragraph 2.B., **Modification – Refuel/Defuel Control Panel**, Paragraph 3.A., **Kit**, and Paragraph 3.B., **Parts**, of the Service Bulletin have been revised.

1. The effectivity has been changed and the Service Bulletin Summary Sheet “Effectivity” row of the Service Bulletin now reads as follows:

EFFECTIVITY: A/C Serial No. **9002 to 9312, 9314 to 9380 and 9384 to 9429**

2. The effectivity statement has been changed and Paragraph 1.A., Effectivity now reads as follows:

1. PLANNING INFORMATION

A. Effectivity

BD-700-1A10 aircraft, Serial No. **9002 to 9312, 9314 to 9380 and 9384 to 9429.**

NOTE: The instructions given in this Service Bulletin are only applicable to the systems and parts installed at the time of delivery of the aircraft or as changed by Bombardier Aerospace Service Bulletin(s).

Before you do this bulletin, examine all STC, STA or equivalent action changes to make sure that this bulletin can be completed.

BOMBARDIER
GLOBAL EXPRESS
BOMBARDIER
GLOBAL EXPRESS^{XRS}
 MODEL BD-700-1A10 (BD-700)

3. The effectivity statement has been changed and Paragraph 1.C., Description now reads as follows:

1. PLANNING INFORMATION

C. Description

This Service Bulletin gives instructions to:

- Remove the panels to gain access,
- Install structural hardware to support the new refuel/defuel control panel for aircraft Serial No. 9002 to 9114,
- Install the structural hardware to support the new refuel/defuel control panel for aircraft Serial No. 9115 to 9312, 9314 to 9380 and 9384 to 9429,
- Locate and connect capped and stowed wires to the Fuel Management and Quantity Gauging Computer (FMQGC) for aircraft Serial No. 9140 to 9209,
- Install the new Refuel/Defuel control panel, and
- Do the necessary tests to make sure that the system operates correctly.

4. The effectivity statement has been changed and Paragraph 1.G., Material – Cost Availability now reads as follows:

1. PLANNING INFORMATION

G. Material – Cost Availability

Kits 700K28-002, 700K28-002A and 700K28-002C are necessary to do this modification for aircraft, Serial No. 9002 to 9114:

KIT NO.	PRICE
700K28-002	Please contact Bombardier Aerospace Parts Services, in Montreal, for delivery lead times and confirmation of prices.
700K28-002A	
700K28-002C	

Kits 700K28-002B and 700K28-002C are necessary to do this modification for aircraft, Serial No. 9115 to 9312, 9314 to 9384, 9384 to 9429:

KIT NO.	PRICE
700K28-002B	Please contact Bombardier Aerospace Parts Services, in Montreal, for delivery lead times and confirmation of prices.
700K28-002C	

BOMBARDIER
GLOBAL EXPRESS
BOMBARDIER
GLOBAL EXPRESS^{XRS}

MODEL BD-700-1A10 (BD-700)

Kit 700K28-002D is necessary to do this modification for aircraft, Serial No. 9140 to 9209:

KIT NO.	PRICE
700K28-002D	Please contact Bombardier Aerospace Parts Services, in Montreal, for delivery lead times and confirmation of prices.

NOTE: If the refuel/defuel control panel is installed in an alternate location by the completion center or service center, order Kit 700K28-002C for aircraft, Serial No 9002 to 9312, 9314 to 9380 and 9384 to 9429 and also Kit 700K28-002D for aircraft, Serial No. 9140 to 9209, to do this modification.

Sufficient kits will be kept for the estimated amount of orders.

Bombardier does not pay for the kits or parts to do this modification.

Contact Smart Parts, Montreal for rate quotes to add this installation to your Smart Parts Plus agreement.

5. The effectivity statement has been changed and Paragraph 1.I., Weight and Balance now reads as follows:

1. PLANNING INFORMATION

I. Weight and Balance

A/C SERIAL NO.	WEIGHT	MOMENT
9002 - 9114	+3.79 pounds (1.72 kg)	+1065 pound-inches (12.27 kgm)
9115 - 9312, 9314 - 9380 and 9384 - 9429	+3.74 pounds (1.70 kg)	+1050.90 pound-inches (12.11 kgm)

6. The new effectivity in Paragraph 2.B.(2) now reads as follows:

2. B. Modification – Refuel/Defuel Control Panel

Applicable to aircraft, Serial No. 9115 to 9312, 9314 to 9380 and 9384 to 9429:

- (2) Install the new refuel/defuel control panel and the related hardware on the bulkhead at FS280.00. Refer to Kit Drawing KGC991-2811 Issue F.

BOMBARDIER
GLOBAL EXPRESS
BOMBARDIER
GLOBAL EXPRESS^{XRS}

MODEL BD-700-1A10 (BD-700)

7. The new effectivity in Paragraph 3.A., for Kits 700K28-002B and 700K28-002C now reads as follows:

3. A. Kit

Kit 700K28-002B is necessary to do this Service Bulletin for aircraft, Serial No. 9115 to 9312, 9314 to 9380 and 9384 to 9429 and contains the parts that follow:

NEW PART NO.	QTY	ITEM	USED PART NO.	INSTRUCTIONS - DISPOSITION
GC217-0036-5	2	Hinge Fitting	-	-
GC217-0037-3	1	Hinge Fitting	-	-
GC217-0038-1	2	Bracket	-	-
GC217-0039-1	1	Plate	-	-
GC217-0043-1	1	Spacer	-	-
GC217-0047-3	1	Angle	-	-
GC217-0048-1	1	Stopper	-	-
GC217-0133-1	1	Bracket	-	-
GC217-0134-1	1	Zee Assembly	-	-
GC722-0057-7	1	Plastic Cover	-	-
GC722-0058-7	1	Plastic Panel	-	-
GC722-0159-1	1	Trim Panel	GC722-0146	Discard
KGC991-2811-3	2	Bolt, Shoulder	-	-
KGC991-2811-4		Bolt, Shoulder	-	-
KGC991-2811-7	4	Velcro Hook	-	-
KGC991-2811-8	4	Velcro Loop	-	-
MS21042-06	4	Nut	-	-
MS21059L08	6	Nutplate	-	-
MS24586-537	1	Spring	-	-
MS25083-2BB6	1	Bonding Strap	-	-
MS35207-263	1	Screw	-	-
MS35207-265	1	Screw	-	-
MS35338-43	2	Lock Washer	-	-
MS35650-302	2	Nut	-	-

BOMBARDIER
GLOBAL EXPRESS
BOMBARDIER
GLOBAL EXPRESS^{XRS}

MODEL BD-700-1A10 (BD-700)

NEW PART NO.	QTY	ITEM	USED PART NO.	INSTRUCTIONS - DISPOSITION
NAS1146D0332J	4	Washer	-	-
NAS1515M3	4	Washer	-	-
NAS1515M3L	3	Washer	-	-

Kit 700K28-002C is necessary to do this Service Bulletin for aircraft, Serial No. 9002 to 9312, 9314 to 9380 and 9384 to 9429 and contains the parts that follow:

NEW PART NO.	QTY	ITEM	USED PART NO.	INSTRUCTIONS - DISPOSITION
GP541-1102-1	1	Panel, Fuel/Defuel	-	-
MS16997-34	6	Screw	-	-
S1426-8	6	Washer, Rubber	-	-

8. The new effectivity statement in Paragraph 3.B. now reads as follows:

3.B. Parts

The parts that follow are necessary to do this Service Bulletin for aircraft, Serial No. 9002 to 9114 and are available from Bombardier Aerospace Parts Services, Montreal:

ITEM	PART NUMBER	QUANTITY
Rivet	M7885/2-4-(xx)	As Required
Rivet	MS20470AD4-(xx)A	As Required
Rivet	B0205017AD4-(xx)S	As Required

- NOTES:**
1. The grip lengths (xx) for the rivets quoted above shall be determined during installation.
 2. The part numbers for the items listed above are subject to change without revision to this Service Bulletin. In case of discrepancy between this list and any other list, the Illustrated Parts Catalog prevails and shall be used to determine the latest part number.

BOMBARDIER
GLOBAL EXPRESS
BOMBARDIER
GLOBAL EXPRESS^{XRS}

MODEL BD-700-1A10 (BD-700)

The parts that follow are necessary to do to do this Service Bulletin for aircraft, Serial No. 9115 to 9312, 9314 to 9380 and 9384 to 9429 and are available from Bombardier Aerospace Parts Services, Montreal:

ITEM	PART NUMBER	QUANTITY
Rivet Solid	MS20470AD4-(xx)A	22
Rivet Solid CSK	B0205017AD3-(xx)S	12
Rivet Solid CSK	B0205017AD4-(xx)S	13

- NOTES:
1. The grip lengths (xx) for the rivets quoted above shall be determined during installation.
 2. The part numbers for the items listed above are subject to change without revision to this Service Bulletin. In case of discrepancy between this list and any other list, the Illustrated Parts Catalog prevails and shall be used to determine the latest part number.

SERVICE BULLETIN REVISION TRANSMITTAL SHEET

MODEL BD-700-1A10 (BD-700)

Discard Revision 01 of this Service Bulletin dated Mar 20/2006 and the Information Sheets dated Jun 13/2006 and Oct 30/2006, replace in its entirety with this Revision 02.

Service Bulletin No. 700-28-002
Date of Basic Issue Oct 29/99
Revision No. 01 Dated Mar 20/2006
Revision No. 02 Dated Feb 16/2007

This revision has no effect for aircraft on which the Basic Issue or Revision 01 of this Service Bulletin was done thus no other action is necessary.

This revision is issued to:

1. Change, in Paragraph 1.C., the effectivity, from **9140 to 9999** to **9140 to 9209**.
2. Change, in Paragraph 1.G., the effectivity for kit number 700K28-002D, from **9140 to 9999** to **9140 to 9209**.
3. Make the following changes in Paragraph 1.K.:
 - Change the Modification Summary, 700T97094, from Rev. A1 to Rev. B,
 - Change the Kit Drawing, KGC991-2811, from Rev. E to Rev. F and
 - Change the Kit Drawing, KGC991-8013, from Rev. NC to Rev. A.
4. Change, in Paragraph 2.B (2), the Issue of kit drawing KGC991-2811, from Rev. E to Rev. F.

BOMBARDIER
GLOBAL EXPRESS
BOMBARDIER
GLOBAL EXPRESS^{XRS}

MODEL BD-700-1A10

5. Change, in Paragraph 2.B. (3), the effectivity, from **9140** to **9999** to **9140** to **9209**.
6. Add, in Paragraph 2.B. (3), a NOTE.
7. Revise, in Paragraph 3.A., the parts for kit 700K28-002.
8. Change, in Paragraph 3.A., the effectivity for kit number 700K28-002D, from **9140** to **9999** to **9140** to **9209**.
9. Revise Kit Drawings KGC991-2811, from Rev. E to Rev. F and KGC991-8013, from Rev. NC to Rev. A..
10. Make miscellaneous minor changes, as necessary, with no change of context.

PILOTS INFORMATION SHEET

MODEL BD-700-1A10 (BD-700)

ATA 28-23

FUEL

<p>MODIFICATION – REFUEL/DEFUEL SYSTEM – ADDITION OF REFUEL/DEFUEL CONTROL PANEL IN FLIGHT COMPARTMENT</p>

This Service Bulletin introduces a flight compartment refuel/defuel control panel.

The additional refuel/defuel control panel is installed on the bulkhead at FS280.00, behind the pilot. It allows the flight crew to perform refueling/defueling operations in comfort from inside the flight compartment. Also, it increases the system redundancy and dispatch reliability.

The control functions on each refuel/defuel control panel is the same for both. If the MASTER switch on both control panels are set to ON, then the control panel which was selected first is the master in control and overrides the commands from the control panel selected on after. To regain command of control panel which was selected after the first, the first control panel must be set to OFF.

SERVICE BULLETIN SUMMARY

This Service Bulletin is available at:
www.cic.bombardier.com

MODEL BD-700-1A10 (BD-700)

ATA 28-23

FUEL

**MODIFICATION – REFUEL/DEFUEL SYSTEM –
 ADDITION OF REFUEL/DEFUEL CONTROL PANEL IN FLIGHT COMPARTMENT**

The information below is provided for your reference. For full details, please see corresponding paragraph contained within this bulletin.

EFFECTIVITY	A/C Serial No. 9002 to 9999		
COMPLIANCE	Alert	<input type="checkbox"/>	
	Recommended	<input type="checkbox"/>	
	Optional	<input checked="" type="checkbox"/>	
MANPOWER	20 man-hours		
KITS and/or PARTS	YES <input checked="" type="checkbox"/>	No <input type="checkbox"/>	
TOOLING	YES <input type="checkbox"/>	No <input checked="" type="checkbox"/>	
GSE	YES <input type="checkbox"/>	No <input checked="" type="checkbox"/>	
REQUIRED FOR SMART PARTS	YES <input type="checkbox"/>	No <input checked="" type="checkbox"/>	
PREREQUISITE BULLETINS	N/A		

To place an order for material or kits, please call Bombardier Spare Parts Sales at:
 1-888-222-1428 (in North America)
 1-316-946-2377 (outside North America)

SERVICE BULLETIN

This Service Bulletin is available at:
www.cic.bombardier.com

MODEL BD-700-1A10 (BD-700)

ATA 28-23

FUEL

**MODIFICATION - REFUEL/DEFUEL SYSTEM -
ADDITION OF REFUEL/DEFUEL CONTROL PANEL IN FLIGHT COMPARTMENT**

1. PLANNING INFORMATION

A. Effectivity

BD-700-1A10 aircraft, Serial No. **9002** to **9999**.

NOTE: The instructions given in this Service Bulletin are only applicable to the systems and parts installed at the time of delivery of the aircraft or as changed by Bombardier Aerospace Service Bulletin(s).

Before you do this bulletin, examine all STC, STA or equivalent action changes to make sure that this bulletin can be completed.

B. Reason

This Service Bulletin introduces a flight compartment refuel/defuel control panel for aircraft that have provisions for this installation. The wiring and some of the hardware have been installed in production to minimize aircraft down time and reduce the cost to install this modification in service.

The additional refuel/defuel control panel is installed on the bulkhead at FS280.00, behind the pilot. It allows the flight crew to perform refueling/defueling operations in comfort from inside the flight compartment. Also, it increases the system redundancy and dispatch reliability.

Refer to applicable governmental agency regulations and requirements and make sure that the work described in this Service Bulletin is performed in compliance with manufacturer's recommendations and/or acceptable industry standards. This document is proprietary to Bombardier Inc. and/or its affiliates and may not be reproduced or copied in any form or by any means without the prior written consent of Bombardier Inc. and/or its affiliates.
© 1999 - 2007, Bombardier Inc. All rights reserved
Challenger*, Global Express*, Global Express^{MSX}, Global 5000*, Learjet* are Trademarks of Bombardier Inc.

C. Description

This Service Bulletin gives instructions to:

- Remove the panels to gain access,
- Install the structural hardware to support the new refuel/defuel control panel for aircraft Serial No. 9002 to 9114,
- Install the structural hardware to support the new refuel/defuel control panel for aircraft Serial No. 9115 to 9999,
- Locate and connect capped and stowed wires to the Fuel Management and Quantity Gauging Computer (FMQGC) for aircraft Serial No. 9140 to 9209,
- Install the new Refuel/Defuel control panel, and
- Do the necessary tests to make sure the system operates correctly.

D. Compliance

Optional

E. Approval

The technical content of this Service Bulletin has been approved under the authority of Transport Canada Civil Aviation (TCCA) Design Approval Organization (DAO) No. DAO #93-Q-02.

- NOTES:
1. The technical content of this Service Bulletin is accepted by the FAA under the Canada/USA bilateral Aviation Safety Agreement.
 2. The technical content of this Service Bulletin is accepted by the JAA and by EASA in accordance with established procedures.

F. Manpower

- NOTES:
1. The man-hours given are estimates to help you schedule the tasks given in this bulletin. The estimates are for direct labor performed by an experienced crew and do not include the time for familiarization, planning, aircraft preparation in hangar such as towing and positioning of scaffolds, removal of interior furnishings, repainting, supervision and inspection.

For more information related to the manpower estimates, refer to SB 700-00-002.

2. This Service Bulletin may require consumable materials that have specific curing times (refer to Paragraph 3.). The accumulated curing time is not included in the labor estimates and should be considered for planning purposes before you schedule this Service Bulletin.

20 man-hours are necessary to do this modification.

Bombardier does not pay for the labor to do this modification.

G. Material - Cost and Availability

Kit 700K28-002, 700K28-002A and 700K28-002C are necessary to do this modification for aircraft Serial No. 9002 to 9114. Only the U.S. Domestic price is shown:

KIT NO.	PRICE
700K28-002	\$8,935.00
700K28-002A	\$12.60
700K28-002C	\$112,330.00

Kit 700K28-002B and 700K28-002C are necessary to do this modification for aircraft Serial No. 9115 to 9999. Only the U.S. Domestic price is shown:

KIT NO.	PRICE
700K28-002B	\$14,647.85
700K28-002C	\$112,330.00

Kit 700K28-002D is also necessary to do this modification for aircraft Serial No. 9140 to 9209. Only the U.S. Domestic price is shown:

KIT NO.	PRICE
700K28-002D	\$172.00

NOTE: If the refuel/defuel control panel is installed in an alternate location by the completion center or service center, order Kit 700K28-002C for aircraft Serial No 9002 to 9999 and also Kit 700K28-002D for aircraft, Serial No. 9140 to 9209, to do this modification.

The above price can change. For the price outside of the U.S., refer to the last applicable Spare Parts Price Catalog. This data is also available from Bombardier Business Aviation Services (BBAS) at the addresses shown in the catalog.

Sufficient kits will be kept for the estimated amount of orders.

Bombardier does not pay for the kits or parts to do this modification.

Contact Smart Parts, Montreal for rate quotes to add this installation to your Smart Parts Plus agreement.

H. Tooling

No equipment or special tools are necessary.

I. Weight and Balance

A/C SERIAL NO.	WEIGHT	MOMENT
9002 - 9114	+3.79 pounds (1.72 kg)	+1065 pound-inches (12.27 kgm)
9115 - 9999	+3.74 pounds (1.70 kg)	+1050.90 pound-inches (12.11 kgm)

J. Electrical Load Data

This modification increases the load as follows:

BUS	AMPS	KW	KVAR
R/D PANEL INT	0.86	-	-

K. References

- Bombardier Aerospace, Modification Summary, 700-90005, Rev D
- Bombardier Aerospace, Modification Summary, 700T91024, Rev A
- Bombardier Aerospace, Modification Summary, R700T400098, Rev A
- Bombardier Aerospace, Modification Summary, 700T97094, Rev B
- Bombardier Aerospace, Kit Drawing, KGC991-2811, Rev B
- Bombardier Aerospace, Kit Drawing, KGC991-2811, Rev F
- Bombardier Aerospace, Kit Drawing, KGC991-1091, Rev NC
- Bombardier Aerospace, Kit Drawing, KGC991-8013, Rev. A
- BD-700 Aircraft Maintenance Manual, Chapters 6, 24, 28 and 51
- Global BD-700 Structural Repair Manual (SRM), Chapter 51
- Global Express BD-700 Wiring Manual (WM), Chapter 20.

L. Other Publications Affected Structural Repair Manual (SRM),

- BD-700 Aircraft Illustrated Parts Catalog (IPC), Chapter 28
- BD-700 Flight Crew Operating Manual (FCOM) CSP 700-6, Volume 1 and 2.

M. Equivalent Service Bulletin

For Global 5000 BD-700-1A11 (BD-700) aircraft, use SB 700-1A11-28-001.

2. ACCOMPLISHMENT INSTRUCTIONS

- NOTES:
1. All TASKs referenced in the procedures that follow are from the Global Express or the Global Express XSR BD-700 Aircraft Maintenance Manual, unless otherwise specified.
 2. All references made to zones, access panels and/or doors, are from the Global Express or the Global Express XSR BD-700 Aircraft Maintenance Manual, Chapter 6.

A. Aircraft Setup

- (1) Obey all electrical/electronic safety precautions. Refer to TASK 24-00-00-910-801.
- (2) Obey the fuel-system safety precautions. Refer to TASK 28-00-00-910-801.
- (3) Open and tag the circuit breakers that follow:

LOCATION	CB NO.	NAME	ZONE
ASCA	A1	R/D PANEL EXT	310
ASCA	A2	R/D PANEL INT	310
ASCA	A3	R/D SOL VALVES	310
ASCA	A4	R/D MOTOR SOV	310

- (4) Remove the panels that follow:

IDENTIFICATION CODE	TYPE OF ACCESS
221CLW	Trim Panel
221ELW	Trim Panel
140BB OR 221DLF	Avionic Bay

B. Modification – Refuel/Defuel Control Panel

- NOTES:
1. It is acceptable for a Completion center or Service Center to relocate the refuel/defuel control panel to an alternate location if desired. The new location is subject to a “supplemental approval”.
 2. The MPS numbers (e.g. MPS150) referenced in the parts list of the subject kit drawing are manufacturing (production-oriented) documents. The information given in these documents are also reflected in the BD-700 Aircraft Maintenance Manual or the BD-700 Structural Repair Manual. The tables below give cross-references of MPS numbers to TASK numbers or Chapter numbers.

BD-700 AIRCRAFT MAINTENANCE MANUAL REFERENCE		
MPS NO.	TASK NO.	TITLE
155-71	51-22-00-100-801	Preparation of Surfaces for Adhesives
155-79	51-21-01-100-801	Preparation of Surfaces for Cementing of Phenolic Plastics
155-97	51-21-01-340-801	Cementing of Phenolic Plastics
145-2	51-80-00-760-801	Electrical Bonding Test

BD-700 STRUCTURAL REPAIR MANUAL REFERENCE		
MPS NO.	CHAPTER NO.	TITLE
150	51-41-04	Bolts, Screws and Related Items
151-1	51-42-08	Solid Rivets

BD-700 WIRING REPAIR MANUAL REFERENCE		
MPS NO.	CHAPTER NO.	TITLE
145-3	20-12-00	Wiring - Removal/Installation
145-5	20-10-00	Wire Identification

There are MPS numbers quoted in the parts list of the subject kit drawing which are not referenced in the tables above (i.e. MPS 144-5). The reason being that the information given in these MPS documents are necessary for this installation.

Applicable to Aircraft Serial No. 9002 to 9114:

- (1) Install the new refuel/defuel control panel and the related hardware on the bulkhead at FS280.00. Refer to kit drawing KGC991-2811 Rev. B and KGC991-1091.

NOTE: Kit drawing KGC991-1091 is a deviation from the kit drawing KGC991-2811 Rev. B, and must be used in conjunction with KGC991-2811 Rev. B.

Applicable to Aircraft Serial No. 9115 to 9999:

- (2) Install the new refuel/defuel control panel and the related hardware on the bulkhead at FS280.00. Refer to kit drawing KGC991-2811 Issue F.

Applicable to Aircraft Serial No. 9140 to 9209:

- (3) For aircraft Serial No. 9140 to 9209, locate and connect the caped and stowed wires to the FMQGC, refer to kit drawing KGC991-8013 detail “-401” and use Kit 700-K28-002D.

NOTE: The aircraft, Serial No. 9210 and all other subsequent BD-700-1A10 aircraft are scheduled for the modification in production (Ref.: Modification Summary, 700T900201).

- (4) Do a continuity check of all new and rerouted wires.
- (5) Do the electrical bonding test for the new refuel/defuel control panel. Make sure the maximum resistance value does not exceed 0.01 ohm. Refer to TASK 51-80-00-760-806.
- (6) Remove the tags and close the circuit breakers that follow:

LOCATION	CB NO.	NAME	ZONE
ASCA	A1	R/D PANEL EXT	310
ASCA	A2	R/D PANEL INT	310
ASCA	A3	R/D SOL VALVES	310
ASCA	A4	R/D MOTOR SOV	310

C. Testing

- (1) Connect and energize the external ac power. Refer to TASK 24-41-00-861-801.
- (2) Do the operational test of the refuel/defuel control panel. Refer to TASK 28-23-01-710-801.

NOTE: To be in control, the cockpit refuel/defuel control panel must be selected “ON” before the external refuel/defuel control panel.

**BOMBARDIER
GLOBAL EXPRESS**
**BOMBARDIER
GLOBAL EXPRESS^{XRS}**

MODEL BD-700-1A10

D. Close-out

- (1) Remove all tools, equipment, and unwanted materials from the work area.
- (2) Remove the external ac power. Refer to TASK 24-41-00-861-802.
- (3) Install the panels that follow:

IDENTIFICATION CODE	TYPE OF ACCESS
221CLW	Trim Panel
221ELW	Trim Panel
140BB OR 221DLF	Avionic Bay

E. Recording

When this Service Bulletin is completed, make an entry in the aircraft log and send the attached Incorporation Notice to Bombardier Business Aircraft Customer Support (BBACS).

3. MATERIAL INFORMATION

A. Kit

Kit 700K28-002 is necessary to do this Service Bulletin for aircraft Serial No. 9002 to 9114 and contains the parts that follow:

NEW PART NO.	QTY	KEY WORD	USED PART NO.	INSTRUCTIONS - DISPOSITION
AS3510-0218C	2	Cable, Safety	-	-
AS3510-0218FC or AS3510-02F	2	Ferrule	-	-
GC217-0036-1S	1	Hinge Fitting	-	-
GC217-0036-3S	1	Hinge Fitting	-	-
GC217-0038-1S	2	Bracket	-	-
GC217-0040-1S	1	Zee Support	-	-
GC217-0042-1S	1	Doubler	-	-
GC217-0043-1	1	Spacer	-	-
GC217-0044-1	1	Hinge Assembly	-	-
GC217-0045-5	1	Plate Assembly	-	-
GC217-0046-1	1	Zee Assembly	-	-
GC217-0048-1	1	Stopper	-	-

**BOMBARDIER
GLOBAL EXPRESS
BOMBARDIER
GLOBAL EXPRESS^{XRS}**

MODEL BD-700-1A10

NEW PART NO.	QTY	KEY WORD	USED PART NO.	INSTRUCTIONS - DISPOSITION
GC722-0057-7	1	Plastic Cover	-	-
GC722-0058-7	1	Plastic Panel	-	-
GC722-0059-11	1	Trim Panel	GC722-0046-1	Discard
KGC991-2811-3	1	Bolt, Shoulder	-	-
KGC991-2811-4	1	Bolt, Shoulder	-	-
KGC991-2811-5	2	Bolt, Shoulder	-	-
M7885/2-5-04	2	Rivet, Blind	-	-
MS21042-06	2	Nut	-	-
MS21042L08	1	Nut	-	-
MS24586-537	1	Spring	-	-
NAS1149DN832J	1	Washer	-	-
NAS1515M3	2	Washer	-	-
NAS1515M3L	1	Washer	-	-
NAS1801-08-8	1	Screw	-	-
S1228-14	2	Tab	-	-
TA02209DC06HA	1	Clamp	-	-

Kit 700K28-002A is also necessary to do this Service Bulletin for aircraft Serial No. 9002 to 9114 and contains the parts that follow:

NEW PART NO.	QTY	KEY WORD	USED PART NO.	INSTRUCTIONS - DISPOSITION
MS35207-265	1	Screw	-	-
AN960JD10LL	1	Washer	-	-
AN960JD10L	3	Washer	-	-
MS25083-2BB7	1	Bonding Jumper	-	-
MS35338-43	2	Lockwasher	-	-
MS35650-302	1	Nut	-	-
NAS1801-3-8	1	Screw	-	-

**BOMBARDIER
GLOBAL EXPRESS**
**BOMBARDIER
GLOBAL EXPRESS^{XRS}**

MODEL BD-700-1A10

Kit 700K28-002B is necessary to do this Service Bulletin for aircraft Serial No. 9115 to 9999 and contains the parts that follow:

NEW PART NO.	QTY	KEY WORD	USED PART NO.	INSTRUCTIONS - DISPOSITION
GC217-0036-5	2	Hinge Fitting	-	-
GC217-0037-3	1	Hinge Fitting	-	-
GC217-0038-1	2	Bracket	-	-
GC217-0039-1	1	Plate	-	-
GC217-0043-1	1	Spacer	-	-
GC217-0047-3	1	Angle	-	-
GC217-0048-1	1	Stopper	-	-
GC217-0133-1	1	Bracket	-	-
GC217-0134-1	1	Zee Assembly	-	-
GC722-0057-7	1	Plastic Cover	-	-
GC722-0058-7	1	Plastic Panel	-	-
GC722-0159-1	1	Trim Panel	GC722-0146	Discard
KGC991-2811-3	2	Bolt, Shoulder	-	-
KGC991-2811-4		Bolt, Shoulder	-	-
KGC991-2811-7	4	Velcro Hook	-	-
KGC991-2811-8	4	Velcro Loop	-	-
MS21042-06	4	Nut	-	-
MS21059L08	6	Nutplate	-	-
MS24586-537	1	Spring	-	-
MS25083-2BB6	1	Bonding Strap	-	-
MS35207-263	1	Screw	-	-
MS35207-265	1	Screw	-	-
MS35338-43	2	Lock Washer	-	-
MS35650-302	2	Nut	-	-
NAS1146D0332J	4	Washer	-	-
NAS1515M3	4	Washer	-	-
NAS1515M3L	3	Washer	-	-

**BOMBARDIER
GLOBAL EXPRESS
BOMBARDIER
GLOBAL EXPRESS^{XRS}**

MODEL BD-700-1A10

Kit 700K28-002C is necessary to do this Service Bulletin for aircraft Serial No. 9002 to 9999 and contains the parts that follow:

NEW PART NO.	QTY	KEY WORD	USED PART NO.	INSTRUCTIONS - DISPOSITION
GP541-1102-1	1	Panel, Fuel/Defuel	-	-
MS16997-34	6	Screw	-	-
S1426-8	6	Washer, Rubber	-	-

Kit 700K28-002D is necessary to do this Service Bulletin for aircraft Serial No. 9140 to 9209 and contains the parts that follow:

NEW PART NO.	QTY	KEY WORD	USED PART NO.	INSTRUCTIONS - DISPOSITION
KGC991-8013-401/01	1	Wiring Kit	-	-

- NOTES:**
1. In case of discrepancy between this list and the "Service Bulletin Kit Parts List" contained in the respective kit, then the latter list prevails.
 2. The actual quantity for some of the hardware contained in the kit can be greater than the amount shown in the table as these items are supplied in pre-packaged quantities.

BOMBARDIER
GLOBAL EXPRESS
BOMBARDIER
GLOBAL EXPRESS^{XRS}

MODEL BD-700-1A10

B. Parts

The parts that follow are necessary to do this Service Bulletin for aircraft Serial No. 9002 to 9114 and can be purchased from a local supplier or from Business Aviation Services:

ITEM	PART NUMBER	QUANTITY
Rivet	M7885/2-4-(xx)	As Required
Rivet	MS20470AD4-(xx)A	As Required
Rivet	B0205017AD4-(xx)S	As Required

NOTE: The grip lengths (xx) for the rivets quoted above shall be determined during installation.

The parts that follow are necessary to do to do this Service Bulletin for aircraft Serial No. 9115 to 9999 and can be purchased from a local supplier or from Business Aviation Services:

ITEM	PART NUMBER	QUANTITY
Rivet Solid	MS20470AD4-(xx)A	22
Rivet Solid CSK	B0205017AD3-(xx)S	12
Rivet Solid CSK	B0205017AD4-(xx)S	13

- NOTES:**
1. The grip lengths (xx) for the rivets quoted above shall be determined during installation.
 2. The part number(s) for the item(s) listed above are/is subject to change without revision to this Service Bulletin. In case of discrepancy between this list and any other list, the Illustrated Parts Catalog prevails and shall be used to determine the latest part number.

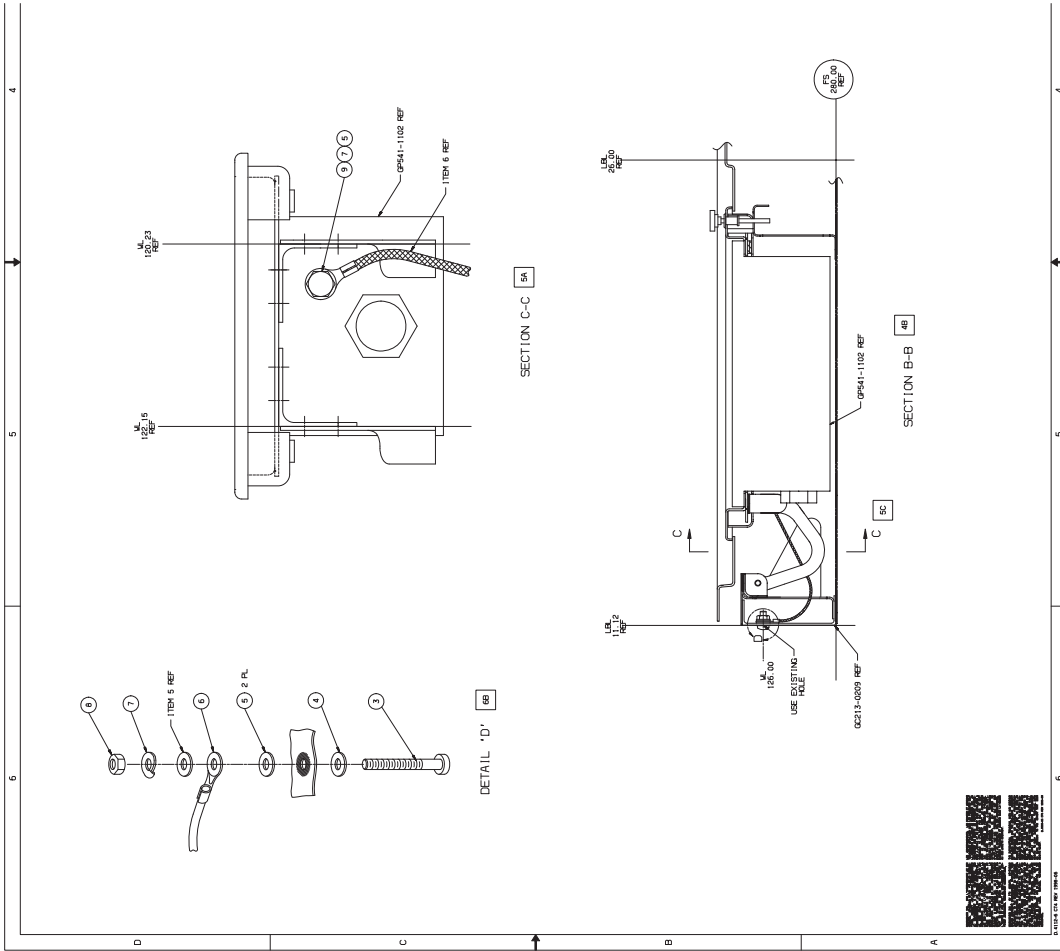
C. Material

The materials that follow, or equivalent, are necessary to do this Service Bulletin. These can be purchased from a local supplier:

DESCRIPTION	PART No./NAME	SPECIFICATION	QUANTITY	SUPPLIER
Cloth, Abrasive Aluminum Oxide	180 Grit	-	As Necessary	Code C
Adhesive Sealant CT: 10-30 min.	Silicone 3M EC847	-	As Necessary	Code B
Aliphatic Naphtha	TT-N-95	-	As Necessary	Code A
Vapor Degreaser	Trichloroethane 1-1-1	MIL-T-81533	As Necessary	Code C
Aluminum Foil Tape	#425	MIL-T-23397	As Necessary	Code B

- NOTES:**
- Bombardier Aerospace does not pay for the consumable materials listed above.
 - Refer to the table that follows for each supplier's address listed by codes.
 - The Curing Time (CT), if applicable, for each consumable material is indicated with the description of each product.
 - At time of release of this Service Bulletin, the information on the supplier was valid and accurate. In the event that this information has changed, the operator is encouraged to use the World Wide Web to find a local supplier.

SUPPLIERS ADDRESSES BY CODES	
Code: A	Code: B
Tempo Paint and Varnish Co. 205 Fenmar Dr. West Toronto, Ontario Canada Tel.: (416) 746-2233	3M Product Information Center 3M Center, Building 0304-01-01 St. Paul, MN 55144-1000 U.S.A. Tel.: 1 (888) 364-3577 Tel.: 1 (651) 737-6501
Code: C Commercially Available	



9b700-28-002-1091-2

KGC991-1091 – Kit – Refuel/Defuel Ctrl Pnl Bonding Provision
 (Sheet 1 of 1, Rev. NC)

700-28-002
 Page 16 of 35

Basic Issue: Oct 29/99
 Revision 02: Feb 16/2007

**BOMBARDIER
GLOBAL EXPRESS**
**BOMBARDIER
GLOBAL EXPRESS^{XRS}**

MODEL BD-700-1A10

FIND NO.		QTY REQ	CAGE CODE	PART, DASH OR IDENTIFYING NO.	DESCRIPTION	SIZE	MATERIAL SPEC	FINISH CODE	ZONE SHEET	ATA NUMBER	NOTE
1			88308	KGC991-2811	-1 INSTL						
2											
3	1		88308	GP541-1102	FUEL/DEFUEL PANEL				5A/1		
4	1		88308	GC217-0036	HINGE FITTING				7A/2		
5	1		88308	GC217-0036	HINGE FITTING				6A/2		
6	2		88308	GC217-0038	BRACKET				7A/2		
7	1		88308	GC217-0040	ZEE SUPPORT				7A/1		
8	1		88308	GC217-0042	DOUBLER				5B/1		
9	1		88308	GC217-0043	SPACER				1D/2		
10	1		88308	GC217-0044	HINGE ASSY				4B/2		
11	1		88308	GC217-0045	PLATE ASSY				1D/2		
12	1		88308	GC217-0046	ZEE ASSY				6A/1		
13	1		88308	GC217-0048	STOPPER				6C/1		
14	1		88308	GC722-0057	PLASTIC COVER				1D/2		⚠
15	1		88308	GC722-0058	PLASTIC PANEL				5A/1		
16	1		88308	GC722-0059	TRIM PANEL				7B/1		⚠
17											
18											
19											
20	2		88308	S1228-14	TAB						
21	2		81349	M7885/2-5	RIVET BLIND				3B/2		
22	2		70958	AS3510-0218C	CABLE, SAFETY				3B/2		
23	2		70958	AS3510-02F	FERRULE				3B/2		

© Bombardier Inc.

PL KGC991-2811 — Kit — Fuel/Defuel Control Panel
(Sheet 1 of 3, Rev. B)

Basic Issue: Oct 29/99
Revision 02: Feb 16/2007

700-28-002
Page 17 of 35

Bombardier Inc. Canadair	P. O. Box 6087, Station Centre-ville Montreal, Quebec, Canada H3C 3G9	DRAWN BY: J. GOYER	SHEET 3	PL KGC991-2811	REV -B
		CAGE CODE 88308		MODEL VERSION: 08 MODEL TYPE: ASSY	

NOTES

- 1 IDENTIFY PER MPS 144-5
- 2 INSTALL BOLT PER MPS 150
- 3 INSTALL RIVET PER MPS 151-1
- 4 FOR DIMENSION NOT SHOWN REFER TO CATIA SOLID MODEL
- 5 INSTALL SAFETYING DEVICES PER MPS 150-3 USING METHOD 1 OR 2.
MS2095C32 LOCKWIRE MAY BE USED AS ALTERNATIVE
TO AS3510-0218C CABLE & AS3510-02F FERRULE.
- 6 CEMENT ITEM 9 & ITEM 13 PER MPS 155-97. PREPARE PHENOLIC SURFACE PER
MPS 155-79. CLEAN BOTH FAYING SURFACES PER MPS 180-9.
- 7 * = PICK UP EXISTING FASTENER LOCATIONS
- 8 APPLY FINISH D070 ON SHOULDER OF SCREW ONLY
- 9 FINISH SPEC PER MPS 138-51
- 10 FINISH CODE PER MPS 138-42
- 11 PRIOR TO INSTALLING PANEL ASSY, PREPARE SURFACE OF MATING PART PER
MPS 155-71.

© Bombardier Inc.

D.4094-2 1997-05

PL KGC991-2811 — Kit — Fuel/Defuel Control Panel
 (Sheet 3 of 3, Rev. B)

REV -F		DRAWN BY: J. GOYER		SHEET 2		PL KGC991-2811				
CAGE CODE 88308		MODEL VERSION: 07		MODEL TYPE: ASSY						
FIND NO.	QTY REQ	CAGE CODE	PART, DASH OR IDENTIFYING NO.	DESCRIPTION	SIZE	MATERIAL SPEC	FINISH CODE	ZONE SHEET	ATA NUMBER	NOTE
24	6	96906	MS16997-34	SCREW				5B/1		
25	6	88308	S1426-8	WASHER, RUBBER				5B/1		
26										
27	22	96906	MS20470AD4	RIVET SOLID				VAR		
28	13	3AB48	B0205017AD4	RIVET SOLID, CSK				VAR		
29	12	3AB48	B0205017AD3	RIVET SOLID, CSK				VAR		
30	2	88308	KGC991-2811 -3	BOLT, SHOULDER	②	M/F NAS1297-06-2	D070	7C/1		⚠
31	2	88308	KGC991-2811 -4	BOLT, SHOULDER	②	M/F NAS1297-06-5	D070	7C/1		⚠
32	4	96906	MS21042-06	NUT				VAR		
33	1	96906	MS24586-537	SPRING				6C/1		
34	6	96906	MS21059L08	NUTPLATE				5C/2		
35	2	88308	KGC991-2811 -5	BOLT, SHOULDER	②	M/F NAS1297-06H3	D070	4B/2		⚠
36	4	80205	NAS1515M3	WASHER				4B/2		
37	3	88308	NAS1515M3L	WASHER				4B/2		
38										
39										
40										
41										
42										
43	1	88308	GC217-0037 -3	HINGE FITTING	②					
44	2	88308	GC217-0036 -5	HINGE FITTING	②			10B/2		
45	1	88308	GC722-0159 -1	TRIM PANEL	②			7B/1		⚠
46	1	88308	GC217-0133 -1	BRACKET	②			9C/1		
47	1	88308	GC217-0134 -1	ZEE ASSY	②			6A/1		
48	1	88308	GC217-0039 -1	PLATE	②			1D/2		
49	1	88308	GC217-0047 -3	ANGLE	②			6D/1		

D.4094-2 CT4 REV 1998-06 © 1998 Bombardier Inc.

ID: GX KGC991-2811 -F REL ASSY 7 2006-01-16
 SB700-28-002-2811-F-52-PL

PL KGC991-2811 – Kit – Fuel/Defuel Control Panel
 (Sheet 2 of 5, Rev. F)

**BOMBARDIER
GLOBAL EXPRESS**
**BOMBARDIER
GLOBAL EXPRESS^{XRS}**

MODEL BD-700-1A10

DRAWN BY: J. GOYER	SHEET 4	PL KGC991-2811	REV -F
	CAGE CODE 88308	MODEL VERSION: 07	MODEL TYPE: ASSY

P.O. Box 6087, Station Centre-ville
Montreal, Quebec, Canada H3C 3G9

**BOMBARDIER
AEROSPACE**

CODE NO.	FIND NO.	SUPERSEDED CONFIGURATION		CONFIGURATION CONTROL TABLE		FIND NO.	QTY REQ	PART OR IDENTIFYING NO.	QTY REQ	PART OR IDENTIFYING NO.	REPLACED BY
		PART OR IDENTIFYING NO.	QTY REQ	PART OR IDENTIFYING NO.	QTY REQ						
②	17					--					N700T91024
②	--					51					N700T91024
②	--					50					N700T91024
②	11					48					N700T91024
②	10					43					N700T91024
②	--					49			1		N700T91024
②	35					31					N700T91024
②	31			1		30			1		N700T91024
②	--					46			1		N700T91024
②	16					45					N700T91024
②	12					47					N700T91024
②	5					44					N700T91024
②	4					44					N700T91024
①	7					17					N700T91001
											REFER TO MODSUM

© 1998 Bombardier, Inc.

D.4094-2 CT4 REV 1998-06

ID: GX KGC991-2811 -F REL ASSY 7 2006-01-16
SB700-28-002-2811-F-S4-PL





PL KGC991-2811 – Kit – Fuel/Defuel Control Panel
(Sheet 4 of 5, Rev. F)

Basic Issue: Oct 29/99
Revision 02: Feb 16/2007

700-28-002
Page 27 of 35

BOMBARDIER AEROSPACE	P.O. Box 6087, Station Centre-ville Montreal, Quebec, Canada H3C 3G9	DRAWN BY: D. T. GRIGORINCU	SHEET 5	PL KGC991-2811	REV -F
		CAGE CODE 88308	MODEL VERSION: 07		MODEL TYPE: ASSY

NOTES

- 1 IDENTIFY PER MPS 144-5
- 2 INSTALL BOLT PER MPS 150
- 3 INSTALL RIVET PER MPS 151-1
- 4 FOR DIMENSION NOT SHOWN REFER TO CATIA SOLID MODEL
- 5 DELETED
- 6  CEMENT ITEM 9 & ITEM 15 PER MPS 155-97. PREPARE PHENOLIC SURFACE PER MPS 155-79. CLEAN BOTH FAYING SURFACES PER MPS 180-9.
- 7  = PICK UP EXISTING FASTENER LOCATIONS
- 8  APPLY FINISH D070 ON SHOULDER OF SCREW ONLY
- 9 FINISH SPEC PER MPS 138-51
- 10 FINISH CODE PER MPS 138-42
- 11 INSTALL VELCRO PER MPS 155-71
- 12 VELCRO IS SELF ADHESIVE AND SHOULD BE COLOR BLACK
- 13  APPLY VELCRO PIECES TO AREAS INDICATED, MAINTAINING A MINIMUM SPACING OF 3 INCHES BETWEEN PIECES
- 14 ELECTRICAL BONDING PER MPS 145-2.

© 1998 Bombardier Inc.

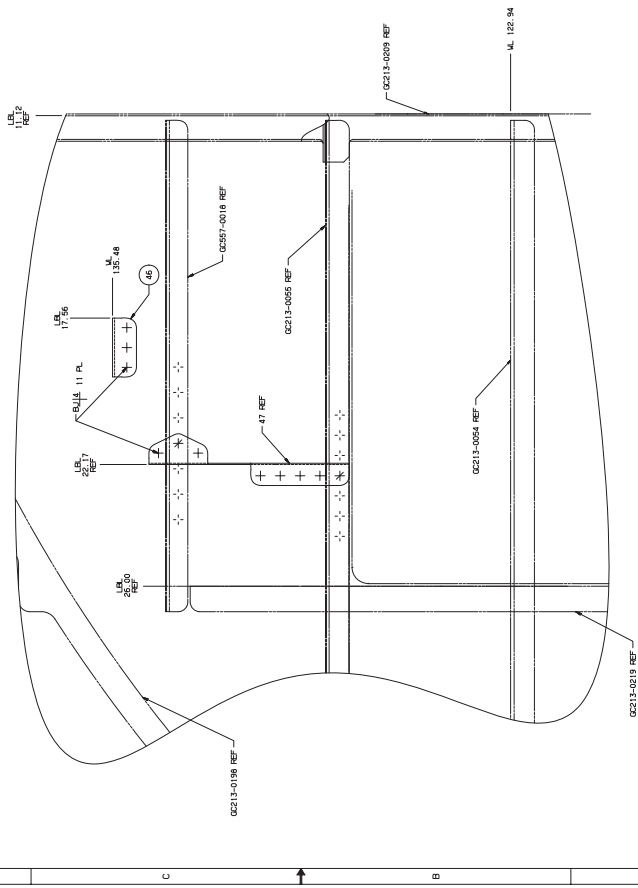
D. 4094-2 CT4 REV. 1998-06

ID: GX KGC991-2811 -F REL ASSY 7 2006-01-16
 SB700-28-002-2811-F-S5-PL

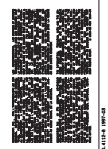
KGC991-2811 — Kit — Fuel/Defuel Control Panel
 (Sheet 5 of 5, Rev. F)

FASTENER CODES - GLOBAL EXPRESS	
ITEM	DESCRIPTION
1	ITEM 11 REF
2	ITEM 12 REF
3	ITEM 13 REF
4	ITEM 14 REF
5	ITEM 15 REF
6	ITEM 16 REF
7	ITEM 17 REF
8	ITEM 18 REF
9	ITEM 19 REF
10	ITEM 20 REF
11	ITEM 21 REF
12	ITEM 22 REF
13	ITEM 23 REF
14	ITEM 24 REF
15	ITEM 25 REF
16	ITEM 26 REF
17	ITEM 27 REF
18	ITEM 28 REF
19	ITEM 29 REF
20	ITEM 30 REF
21	ITEM 31 REF
22	ITEM 32 REF
23	ITEM 33 REF
24	ITEM 34 REF
25	ITEM 35 REF
26	ITEM 36 REF
27	ITEM 37 REF
28	ITEM 38 REF
29	ITEM 39 REF
30	ITEM 40 REF
31	ITEM 41 REF
32	ITEM 42 REF
33	ITEM 43 REF
34	ITEM 44 REF
35	ITEM 45 REF
36	ITEM 46 REF
37	ITEM 47 REF
38	ITEM 48 REF
39	ITEM 49 REF
40	ITEM 50 REF

BU = BUSHING
 AG = ANGLE



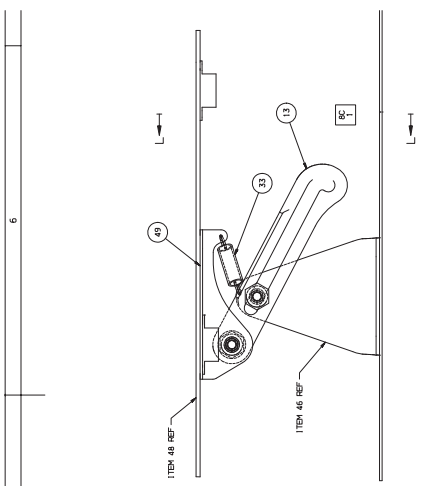
VIEW LOCKING FWD
 VIEW LOCKING POST MOD



KGC991-2811 – Kit – Fuel/Defuel Control Panel
 (Sheet 1 of 2, Rev. F - continued)

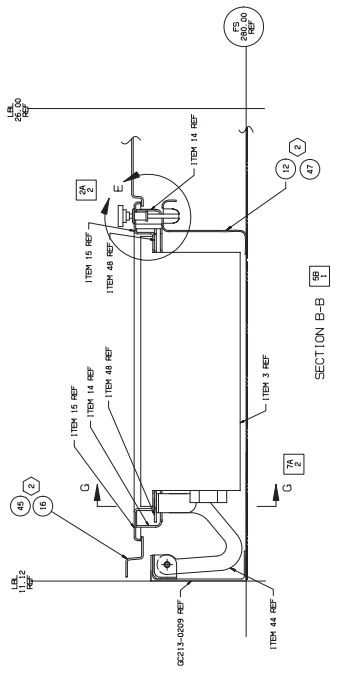
Basic Issue: Oct 29/99
 Revision 02: Feb 16/2007

700-28-002
 Page 31 of 35



SECTION L-L
 ITEM 31 NOT SHOWN FOR CLARITY

SECTION C-C
 ITEM 3 & ITEM 4 NOT SHOWN FOR CLARITY
 SCALE 2/1



KGC991-2811

REFERENCE DRAWINGS:

- (LT) WIRING DIAGRAM GC598-0140-H (COCKPIT REFUEL/DEFUEL SYSTEM) BASED ON SCHEMATIC 30760-560694
- (FB) WIRING DIAGRAM GC598-0008-043R (9140-9148), GC598-0009-053V (9149-9150), GC598-0010-063W (9151-9152), GC598-0011-073X (9153-9154), GC598-0012-083Y (9155-9156), GC598-0013-093Z (9157-9158), GC598-0014-103AA (9159-9160), GC598-0015-113AB (9161-9162), GC598-0016-123AC (9163-9164), GC598-0017-133AD (9165-9166), GC598-0018-143AE (9167-9168), GC598-0019-153AF (9169-9170), GC598-0020-163AG (9171-9172), GC598-0021-173AH (9173-9174), GC598-0022-183AI (9175-9176), GC598-0023-193AJ (9177-9178), GC598-0024-203AK (9179-9180), GC598-0025-213AL (9181-9182), GC598-0026-223AM (9183-9184), GC598-0027-233AN (9185-9186), GC598-0028-243AO (9187-9188), GC598-0029-253AP (9189-9190), GC598-0030-263AQ (9191-9192), GC598-0031-273AR (9193-9194), GC598-0032-283AS (9195-9196), GC598-0033-293AT (9197-9198), GC598-0034-303AU (9199-9200), GC598-0035-313AV (9201-9202), GC598-0036-323AW (9203-9204), GC598-0037-333AX (9205-9206), GC598-0038-343AY (9207-9208), GC598-0039-353AZ (9209-9210), GC598-0040-363BA (9211-9212), GC598-0041-373BB (9213-9214), GC598-0042-383BC (9215-9216), GC598-0043-393BD (9217-9218), GC598-0044-403BE (9219-9220), GC598-0045-413BF (9221-9222), GC598-0046-423BG (9223-9224), GC598-0047-433BH (9225-9226), GC598-0048-443BI (9227-9228), GC598-0049-453BJ (9229-9230), GC598-0050-463BK (9231-9232), GC598-0051-473BL (9233-9234), GC598-0052-483BM (9235-9236), GC598-0053-493BN (9237-9238), GC598-0054-503BO (9239-9240), GC598-0055-513BP (9241-9242), GC598-0056-523BQ (9243-9244), GC598-0057-533BR (9245-9246), GC598-0058-543BS (9247-9248), GC598-0059-553BT (9249-9250), GC598-0060-563BU (9251-9252), GC598-0061-573BV (9253-9254), GC598-0062-583BW (9255-9256), GC598-0063-593BX (9257-9258), GC598-0064-603BY (9259-9260), GC598-0065-613BZ (9261-9262), GC598-0066-623CA (9263-9264), GC598-0067-633CB (9265-9266), GC598-0068-643CC (9267-9268), GC598-0069-653CD (9269-9270), GC598-0070-663CE (9271-9272), GC598-0071-673CF (9273-9274), GC598-0072-683CG (9275-9276), GC598-0073-693CH (9277-9278), GC598-0074-703CI (9279-9280), GC598-0075-713CJ (9281-9282), GC598-0076-723CK (9283-9284), GC598-0077-733CL (9285-9286), GC598-0078-743CM (9287-9288), GC598-0079-753CN (9289-9290), GC598-0080-763CO (9291-9292), GC598-0081-773CP (9293-9294), GC598-0082-783CQ (9295-9296), GC598-0083-793CR (9297-9298), GC598-0084-803CS (9299-9300), GC598-0085-813CT (9301-9302), GC598-0086-823CU (9303-9304), GC598-0087-833CV (9305-9306), GC598-0088-843CW (9307-9308), GC598-0089-853CX (9309-9310), GC598-0090-863CY (9311-9312), GC598-0091-873CZ (9313-9314), GC598-0092-883DA (9315-9316), GC598-0093-893DB (9317-9318), GC598-0094-903DC (9319-9320), GC598-0095-913DD (9321-9322), GC598-0096-923DE (9323-9324), GC598-0097-933DF (9325-9326), GC598-0098-943DG (9327-9328), GC598-0099-953DH (9329-9330), GC598-0100-963DI (9331-9332), GC598-0101-973DJ (9333-9334), GC598-0102-983DK (9335-9336), GC598-0103-993DL (9337-9338), GC598-0104-1003DM (9339-9340), GC598-0105-1013DN (9341-9342), GC598-0106-1023DO (9343-9344), GC598-0107-103DP (9345-9346), GC598-0108-1043DQ (9347-9348), GC598-0109-1053DR (9349-9350), GC598-0110-1063DS (9351-9352), GC598-0111-1073DT (9353-9354), GC598-0112-1083DU (9355-9356), GC598-0113-1093DV (9357-9358), GC598-0114-1103DW (9359-9360), GC598-0115-1113DX (9361-9362), GC598-0116-1123DY (9363-9364), GC598-0117-1133DZ (9365-9366), GC598-0118-1143EA (9367-9368), GC598-0119-1153EB (9369-9370), GC598-0120-1163EC (9371-9372), GC598-0121-1173ED (9373-9374), GC598-0122-1183EE (9375-9376), GC598-0123-1193EF (9377-9378), GC598-0124-1203EG (9379-9380), GC598-0125-1213EH (9381-9382), GC598-0126-1223EI (9383-9384), GC598-0127-1233EJ (9385-9386), GC598-0128-1243EK (9387-9388), GC598-0129-1253EL (9389-9390), GC598-0130-1263EM (9391-9392), GC598-0131-1273EN (9393-9394), GC598-0132-1283EO (9395-9396), GC598-0133-1293EP (9397-9398), GC598-0134-1303EQ (9399-9400), GC598-0135-1313ER (9401-9402), GC598-0136-1323ES (9403-9404), GC598-0137-1333ET (9405-9406), GC598-0138-1343EU (9407-9408), GC598-0139-1353EV (9409-9410), GC598-0140-1363EW (9411-9412), GC598-0141-1373EX (9413-9414), GC598-0142-1383EY (9415-9416), GC598-0143-1393EZ (9417-9418), GC598-0144-1403FA (9419-9420), GC598-0145-1413FB (9421-9422), GC598-0146-1423FC (9423-9424), GC598-0147-1433FD (9425-9426), GC598-0148-1443FE (9427-9428), GC598-0149-1453FF (9429-9430), GC598-0150-1463FG (9431-9432), GC598-0151-1473FH (9433-9434), GC598-0152-1483FI (9435-9436), GC598-0153-1493FJ (9437-9438), GC598-0154-1503FK (9439-9440), GC598-0155-1513FL (9441-9442), GC598-0156-1523FM (9443-9444), GC598-0157-1533FN (9445-9446), GC598-0158-1543FO (9447-9448), GC598-0159-1553FP (9449-9450), GC598-0160-1563FQ (9451-9452), GC598-0161-1573FR (9453-9454), GC598-0162-1583FS (9455-9456), GC598-0163-1593FT (9457-9458), GC598-0164-1603FU (9459-9460), GC598-0165-1613FV (9461-9462), GC598-0166-1623FW (9463-9464), GC598-0167-1633FX (9465-9466), GC598-0168-1643FY (9467-9468), GC598-0169-1653FZ (9469-9470), GC598-0170-1663GA (9471-9472), GC598-0171-1673GB (9473-9474), GC598-0172-1683GC (9475-9476), GC598-0173-1693GD (9477-9478), GC598-0174-1703GE (9479-9480), GC598-0175-1713GF (9481-9482), GC598-0176-1723GG (9483-9484), GC598-0177-1733GH (9485-9486), GC598-0178-1743GI (9487-9488), GC598-0179-1753GJ (9489-9490), GC598-0180-1763GK (9491-9492), GC598-0181-1773GL (9493-9494), GC598-0182-1783GM (9495-9496), GC598-0183-1793GN (9497-9498), GC598-0184-1803GO (9499-9500), GC598-0185-1813GP (9501-9502), GC598-0186-1823GQ (9503-9504), GC598-0187-1833GR (9505-9506), GC598-0188-1843GS (9507-9508), GC598-0189-1853GT (9509-9510), GC598-0190-1863GU (9511-9512), GC598-0191-1873GV (9513-9514), GC598-0192-1883GW (9515-9516), GC598-0193-1893GX (9517-9518), GC598-0194-1903GY (9519-9520), GC598-0195-1913GZ (9521-9522), GC598-0196-1923HA (9523-9524), GC598-0197-1933HB (9525-9526), GC598-0198-1943HC (9527-9528), GC598-0199-1953HD (9529-9530), GC598-0200-1963HE (9531-9532), GC598-0201-1973HF (9533-9534), GC598-0202-1983HG (9535-9536), GC598-0203-1993HH (9537-9538), GC598-0204-2003HI (9539-9540), GC598-0205-2013HJ (9541-9542), GC598-0206-2023HK (9543-9544), GC598-0207-2033HL (9545-9546), GC598-0208-2043HM (9547-9548), GC598-0209-2053HN (9549-9550), GC598-0210-2063HO (9551-9552), GC598-0211-2073HP (9553-9554), GC598-0212-2083HQ (9555-9556), GC598-0213-2093HR (9557-9558), GC598-0214-2103HS (9559-9560), GC598-0215-2113HT (9561-9562), GC598-0216-2123HU (9563-9564), GC598-0217-2133HV (9565-9566), GC598-0218-2143HW (9567-9568), GC598-0219-2153HX (9569-9570), GC598-0220-2163HY (9571-9572), GC598-0221-2173HZ (9573-9574), GC598-0222-2183IA (9575-9576), GC598-0223-2193IB (9577-9578), GC598-0224-2203IC (9579-9580), GC598-0225-2213ID (9581-9582), GC598-0226-2223IE (9583-9584), GC598-0227-2233IF (9585-9586), GC598-0228-2243IG (9587-9588), GC598-0229-2253IH (9589-9590), GC598-0230-2263II (9591-9592), GC598-0231-2273IJ (9593-9594), GC598-0232-2283IK (9595-9596), GC598-0233-2293IL (9597-9598), GC598-0234-2303IM (9599-9600), GC598-0235-2313IN (9601-9602), GC598-0236-2323IO (9603-9604), GC598-0237-2333IP (9605-9606), GC598-0238-2343IQ (9607-9608), GC598-0239-2353IR (9609-9610), GC598-0240-2363IS (9611-9612), GC598-0241-2373IT (9613-9614), GC598-0242-2383IU (9615-9616), GC598-0243-2393IV (9617-9618), GC598-0244-2403IW (9619-9620), GC598-0245-2413IX (9621-9622), GC598-0246-2423IY (9623-9624), GC598-0247-2433IZ (9625-9626), GC598-0248-2443JA (9627-9628), GC598-0249-2453JB (9629-9630), GC598-0250-2463JC (9631-9632), GC598-0251-2473JD (9633-9634), GC598-0252-2483JE (9635-9636), GC598-0253-2493JF (9637-9638), GC598-0254-2503JG (9639-9640), GC598-0255-2513JH (9641-9642), GC598-0256-2523JI (9643-9644), GC598-0257-2533JJ (9645-9646), GC598-0258-2543JK (9647-9648), GC598-0259-2553JL (9649-9650), GC598-0260-2563JM (9651-9652), GC598-0261-2573JN (9653-9654), GC598-0262-2583JO (9655-9656), GC598-0263-2593JP (9657-9658), GC598-0264-2603JQ (9659-9660), GC598-0265-2613JR (9661-9662), GC598-0266-2623JS (9663-9664), GC598-0267-2633JT (9665-9666), GC598-0268-2643JU (9667-9668), GC598-0269-2653JV (9669-9670), GC598-0270-2663JW (9671-9672), GC598-0271-2673JX (9673-9674), GC598-0272-2683JY (9675-9676), GC598-0273-2693JZ (9677-9678), GC598-0274-2703KA (9679-9680), GC598-0275-2713KB (9681-9682), GC598-0276-2723KC (9683-9684), GC598-0277-2733KD (9685-9686), GC598-0278-2743KE (9687-9688), GC598-0279-2753KF (9689-9690), GC598-0280-2763KG (9691-9692), GC598-0281-2773KH (9693-9694), GC598-0282-2783KI (9695-9696), GC598-0283-2793KJ (9697-9698), GC598-0284-2803KK (9699-9700), GC598-0285-2813KL (9701-9702), GC598-0286-2823KM (9703-9704), GC598-0287-2833KN (9705-9706), GC598-0288-2843KO (9707-9708), GC598-0289-2853KP (9709-9710), GC598-0290-2863KQ (9711-9712), GC598-0291-2873KR (9713-9714), GC598-0292-2883KS (9715-9716), GC598-0293-2893KT (9717-9718), GC598-0294-2903KU (9719-9720), GC598-0295-2913KV (9721-9722), GC598-0296-2923KW (9723-9724), GC598-0297-2933KX (9725-9726), GC598-0298-2943KY (9727-9728), GC598-0299-2953KZ (9729-9730), GC598-0300-2963LA (9731-9732), GC598-0301-2973LB (9733-9734), GC598-0302-2983LC (9735-9736), GC598-0303-2993LD (9737-9738), GC598-0304-3003LE (9739-9740), GC598-0305-3013LF (9741-9742), GC598-0306-3023LG (9743-9744), GC598-0307-3033LH (9745-9746), GC598-0308-3043LI (9747-9748), GC598-0309-3053LJ (9749-9750), GC598-0310-3063LK (9751-9752), GC598-0311-3073LL (9753-9754), GC598-0312-3083LM (9755-9756), GC598-0313-3093LN (9757-9758), GC598-0314-3103LO (9759-9760), GC598-0315-3113LP (9761-9762), GC598-0316-3123LQ (9763-9764), GC598-0317-3133LR (9765-9766), GC598-0318-3143LS (9767-9768), GC598-0319-3153LT (9769-9770), GC598-0320-3163LU (9771-9772), GC598-0321-3173LV (9773-9774), GC598-0322-3183LW (9775-9776), GC598-0323-3193LX (9777-9778), GC598-0324-3203LY (9779-9780), GC598-0325-3213LZ (9781-9782), GC598-0326-3223MA (9783-9784), GC598-0327-3233MB (9785-9786), GC598-0328-3243MC (9787-9788), GC598-0329-3253MD (9789-9790), GC598-0330-3263ME (9791-9792), GC598-0331-3273MF (9793-9794), GC598-0332-3283MG (9795-9796), GC598-0333-3293MH (9797-9798), GC598-0334-3303MI (9799-9800), GC598-0335-3313MJ (9801-9802), GC598-0336-3323MK (9803-9804), GC598-0337-3333ML (9805-9806), GC598-0338-3343MN (9807-9808), GC598-0339-3353MO (9809-9810), GC598-0340-3363MP (9811-9812), GC598-0341-3373MQ (9813-9814), GC598-0342-3383MR (9815-9816), GC598-0343-3393MS (9817-9818), GC598-0344-3403MT (9819-9820), GC598-0345-3413MU (9821-9822), GC598-0346-3423MV (9823-9824), GC598-0347-3433MW (9825-9826), GC598-0348-3443MX (9827-9828), GC598-0349-3453MY (9829-9830), GC598-0350-3463MZ (9831-9832), GC598-0351-3473NA (9833-9834), GC598-0352-3483NB (9835-9836), GC598-0353-3493NC (9837-9838), GC598-0354-3503ND (9839-9840), GC598-0355-3513NE (9841-9842), GC598-0356-3523NF (9843-9844), GC598-0357-3533NG (9845-9846), GC598-0358-3543NH (9847-9848), GC598-0359-3553NI (9849-9850), GC598-0360-3563NJ (9851-9852), GC598-0361-3573NK (9853-9854), GC598-0362-3583NL (9855-9856), GC598-0363-3593NM (9857-9858), GC598-0364-3603NO (9859-9860), GC598-0365-3613NP (9861-9862), GC598-0366-3623NQ (9863-9864), GC598-0367-3633NR (9865-9866), GC598-0368-3643NS (9867-9868), GC598-0369-3653NT (9869-9870), GC598-0370-3663NU (9871-9872), GC598-0371-3673NV (9873-9874), GC598-0372-3683NW (9875-9876), GC598-0373-3693NX (9877-9878), GC598-0374-3703NY (9879-9880), GC598-0375-3713NZ (9881-9882), GC598-0376-3723OA (9883-9884), GC598-0377-3733OB (9885-9886), GC598-0378-3743OC (9887-9888), GC598-0379-3753OD (9889-9890), GC598-0380-3763OE (9891-9892), GC598-0381-3773OF (9893-9894), GC598-0382-3783OG (9895-9896), GC598-0383-3793OH (9897-9898), GC598-0384-3803OI (9899-9900), GC598-0385-3813OJ (9901-9902), GC598-0386-3823OK (9903-9904), GC598-0387-3833OL (9905-9906), GC598-0388-3843OM (9907-9908), GC598-0389-3853ON (9909-9910), GC598-0390-3863OO (9911-9912), GC598-0391-3873OP (9913-9914), GC598-0392-3883OQ (9915-9916), GC598-0393-3893OR (9917-9918), GC598-0394-3903OS (9919-9920), GC598-0395-3913OT (9921-9922), GC598-0396-3923OU (9923-9924), GC598-0397-3933OV (9925-9926), GC598-0398-3943OW (9927-9928), GC598-0399-3953OX (9929-9930), GC598-0400-3963OY (9931-9932), GC598-0401-3973OZ (9933-9934), GC598-0402-3983PA (9935-9936), GC598-0403-3993PB (9937-9938), GC598-0404-4003PC (9939-9940), GC598-0405-4013PD (9941-9942), GC598-0406-4023PE (9943-9944), GC598-0407-4033PF (9945-9946), GC598-0408-4043PG (9947-9948), GC598-0409-4053PH (9949-9950), GC598-0410-4063PI (9951-9952), GC598-0411-4073PJ (9953-9954), GC598-0412-4083PK (9955-9956), GC598-0413-4093PL (9957-9958), GC598-0414-4103PM (9959-9960), GC598-0415-4113PN (9961-9962), GC598-0416-4123PO (9963-9964), GC598-0417-4133PP (9965-9966), GC598-0418-4143PQ (9967-9968), GC598-0419-4153PR (9969-9970), GC598-0420-4163PS (9971-9972), GC598-0421-4173PT (9973-9974), GC598-0422-4183PU (9975-9976), GC598-0423-4193PV (9977-9978), GC598-0424-4203PW (9979-9980), GC598-0425-4213PX (9981-9982), GC598-0426-4223PY (9983-9984), GC598-0427-4233PZ (9985-9986), GC598-0428-4243QA (9987-9988), GC598-0429-4253QB (9989-9990), GC598-0430-4263QC (9991-9992), GC598-0431-4273QD (9993-9994), GC598-0432-4283QE (9995-9996), GC598-0433-4293QF (9997-9998), GC598-0434-4303QG (9999-10000)

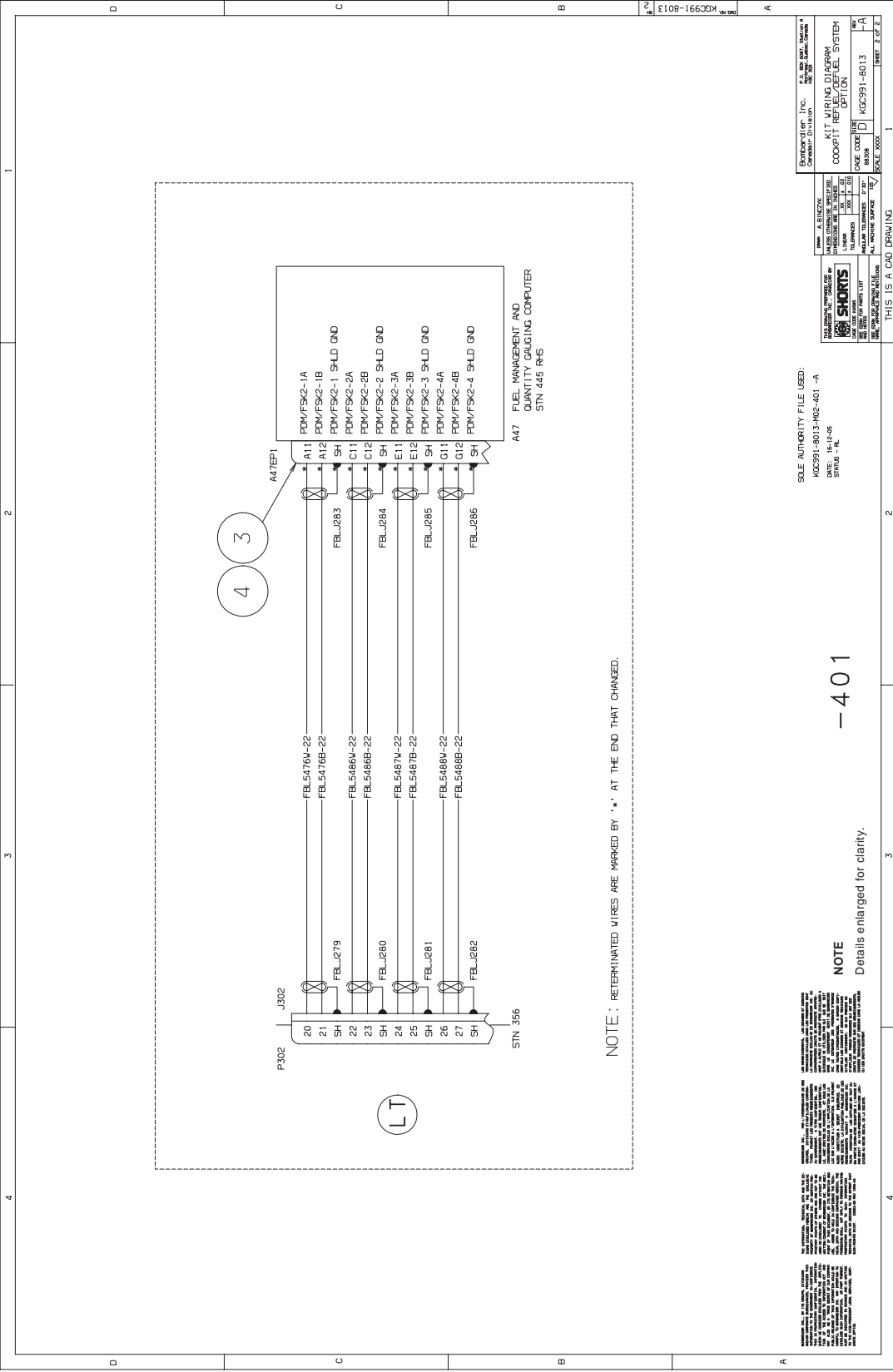
NOTES:

- INSTALLATION OF AIRCRAFT WIRING AS PER MFS 145-3.
 - IDENTIFICATION OF WIRES AS PER MFS 145-5.
 - BOX QUANTITIES MAY CONTAIN SPARES TO ALLOW FOR DAMAGE/ LOSSES.
 - QUANTITY ONE KIT REQUIRED PER AIRCRAFT.
 - THIS DRAWING DOES NOT CONTAIN ANY ARTICLES SUBJECT TO I.A.T.A.
- THE PURPOSE OF THIS MODIFICATION IS TO RECONNECT WIRES AT A7 (PROCC) WHEN COCKPIT REFUEL/ DEFUEL PANEL OPTION IS INSTALLED.

REWORK INSTRUCTIONS:

- RETERMINE THE FOLLOWING CAPRED AND STORED WIRES AT A4TEPI:

FROM	WIRE CODE	IS TO	END TERMINATION	WAS TO	EFFECTIVITY
J302-20	FEL5470V-22	A4TEPI-1A11	030-2259-000	A4TEPI-CORSTON	-401
J302-21	FEL5470V-22	A4TEPI-1A12	030-2259-000	A4TEPI-CORSTON	-401
SB/A11	FELJ283	A4TEPI-1SH	M7928/7-11	A4TEPI-CORSTON	-401
J302-22	FEL5468A-22	A4TEPI-C11	030-2259-000	A4TEPI-CORSTON	-401
J302-23	FEL5468B-22	A4TEPI-C12	030-2259-000	A4TEPI-CORSTON	-401
SB/C11	FELJ284	A4TEPI-1SH	M7928/7-11	A4TEPI-CORSTON	-401
J302-24	FEL5467V-22	A4TEPI-E11	030-2259-000	A4TEPI-CORSTON	-401
J302-25	FEL5467B-22	A4TEPI-E12	030-2259-000	A4TEPI-CORSTON	-401
SB/E11</					



NOTE : REREMATED WIRES ARE MARKED BY '*' AT THE END THAT CHANGED.

DATE	16-02-2000	BY	W. J. B. / J. B. / J. B.
DESIGNED BY	A. B. / C. D. / E. F.		
CHECKED BY	G. H. / I. J. / K. L.		
APPROVED BY	M. N. / O. P. / Q. R.		
SCALE	1:1		
SHEET	2	OF	2

THIS IS A CAD DRAWING
 THIS DRAWING IS THE PROPERTY OF SHORIS
 IT IS NOT TO BE REPRODUCED OR TRANSMITTED IN ANY FORM OR BY ANY MEANS, ELECTRONIC OR MECHANICAL, INCLUDING PHOTOCOPYING, RECORDING, OR BY ANY INFORMATION STORAGE AND RETRIEVAL SYSTEM.
 SHORIS
 10000 W. 10TH AVE. SUITE 100
 DENVER, CO 80231
 TEL: 303.751.1000
 FAX: 303.751.1001
 WWW.SHORIS.COM

SOLE AUTHORITY FILE USED:
 KGC991-8013-802-401 -A
 DATE: 16-02-2000
 DRAWN BY: W. J. B.

- 401

NOTE
 Details enlarged for clarity.

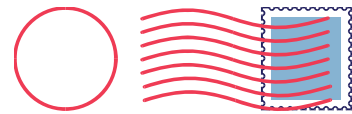
SERVICE BULLETIN EVALUATION FORM
 (YOUR IDEAS WILL HELP US PROVIDE BETTER BULLETINS)

SERVICE BULLETIN: <u>700-28-002</u>	ISSUE: <u>Rev. 02</u>	DATED: <u>Feb 16/2007</u>
TITLE: Modification –Refuel/Defuel System – Addition of Refuel/Defuel Control Panel in Flight Compartment		

	STRONGLY DISAGREE	DISAGREE	NEUTRAL	AGREE	STRONGLY AGREE
<ul style="list-style-type: none"> • Instructions to do the Service Bulletin were accurate. Comments: 	<input type="checkbox"/>	<input type="checkbox"/>	<input type="checkbox"/>	<input type="checkbox"/>	<input type="checkbox"/>
<ul style="list-style-type: none"> • Illustration(s), figure(s), and/or kit drawing(s) were helpful to carry out instructions. Comments: 	<input type="checkbox"/>	<input type="checkbox"/>	<input type="checkbox"/>	<input type="checkbox"/>	<input type="checkbox"/>
<ul style="list-style-type: none"> • If a kit was required, did the kit contents received agree with the contents listed in the bulletin? Comments: 	<input type="checkbox"/>	<input type="checkbox"/>	<input type="checkbox"/>	<input type="checkbox"/>	<input type="checkbox"/>
<ul style="list-style-type: none"> • The loose parts listed under Paragraph 3 were easily procured. Comments: 	<input type="checkbox"/>	<input type="checkbox"/>	<input type="checkbox"/>	<input type="checkbox"/>	<input type="checkbox"/>
<ul style="list-style-type: none"> • Work was accomplished in the prescribed time. Comments: 	<input type="checkbox"/>	<input type="checkbox"/>	<input type="checkbox"/>	<input type="checkbox"/>	<input type="checkbox"/>
<ul style="list-style-type: none"> • Overall, I was satisfied with this Service Bulletin. Comments: 	<input type="checkbox"/>	<input type="checkbox"/>	<input type="checkbox"/>	<input type="checkbox"/>	<input type="checkbox"/>

<i>For administrative use only</i>	PLEASE SUPPLY US WITH THE FOLLOWING DATA AND FAX TO: (514) 855-2535	
0631TPMS6923	OPERATOR:	
	AIRCRAFT SERIAL NO.:	
	TELEPHONE:	
	FACSIMILE:	
	NAME: (Please print)	

**THANK YOU FOR ANSWERING THIS EVALUATION FORM!
 UPON COMPLETION OF THIS EVALUATION FORM, PLEASE FOLD, AND RETURN**



Bombardier Business Aircraft Customer Support (BBACS)

P.O. Box 6087, Station Centre-ville
Montréal, Québec, Canada H3C 3G9

Attention: Supervisor, Service Bulletin Group
Department 631

SERVICE BULLETIN INCORPORATION SHEET – “700-28-002”

Upon completion of the Service Bulletin, please fill-in, fold and return/or fax to (514) 855-8798 or e-mail to Fracas at fracas.montreal@aero.bombardier.com

NOTE: For configuration control purposes, please fill out one form for each Service Bulletin.

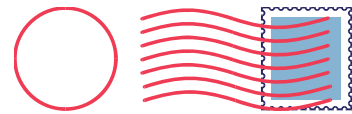
Service Bulletin Number	Rev.	* Parts Completed	Further Action Required	
			YES	NO
700-28-002	02	-	<input type="checkbox"/>	<input type="checkbox"/>
-	-	-	<input type="checkbox"/>	<input type="checkbox"/>
-	-	-	<input type="checkbox"/>	<input type="checkbox"/>

Actual hours to accomplish Service Bulletin:
 Access: _____ Modification: _____ Tests: _____ Restore: _____

* **NOTES:** 1. Where the Service Bulletin is divided into a number of parts (e.g., PARTS A, B, C, D, etc.) which can be carried out separately, indicate only those parts completed at this time.
 2. For repetitive checks (usually PART A) only the initial check should be reported unless otherwise stated in the Service Bulletin.
 3. When more than one part is carried out at the same time, each part should be reported.

Is the aircraft enrolled on the CAMP computerized maintenance program?	Yes	No
	<input type="checkbox"/>	<input type="checkbox"/>

Aircraft Serial No. _____	Aircraft Reg. No. _____
Airframe Landings _____	Airframe Hours _____
Date of Incorporation _____	Service Order No. _____
Facility & Location Incorporation Bulletin _____	
SIGNED: _____	DATE: _____



Bombardier Business Aircraft Customer Support (BBACS)

P.O. Box 6087, Station Centre-ville
Montréal, Québec, Canada H3C 3G9

Attention: Maintenance Engineering
Department 051
